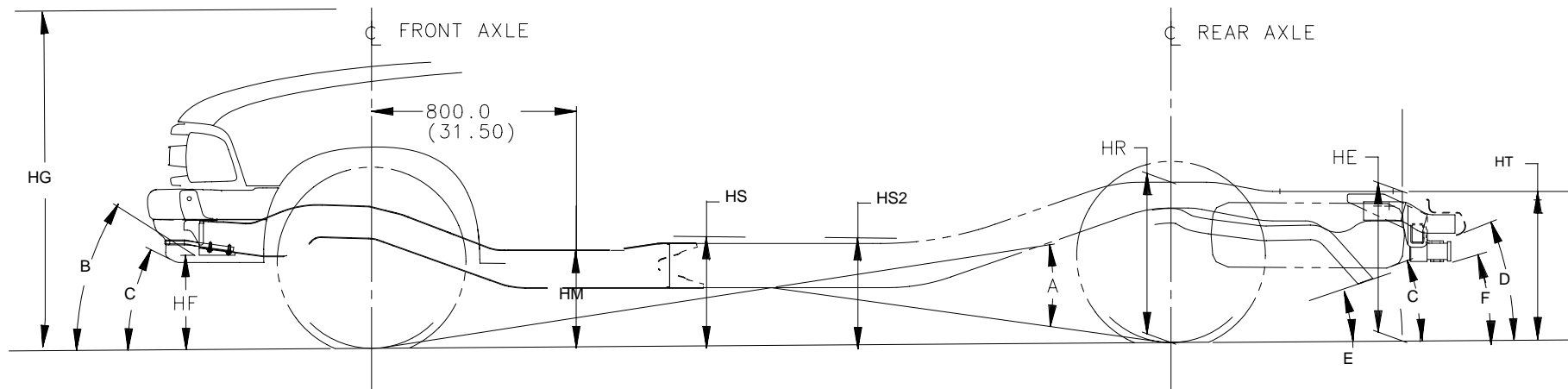


FRAME HEIGHTS AND RAMP ANGLE DATA

S/T 10003 Pickup



Heights (To Ground)

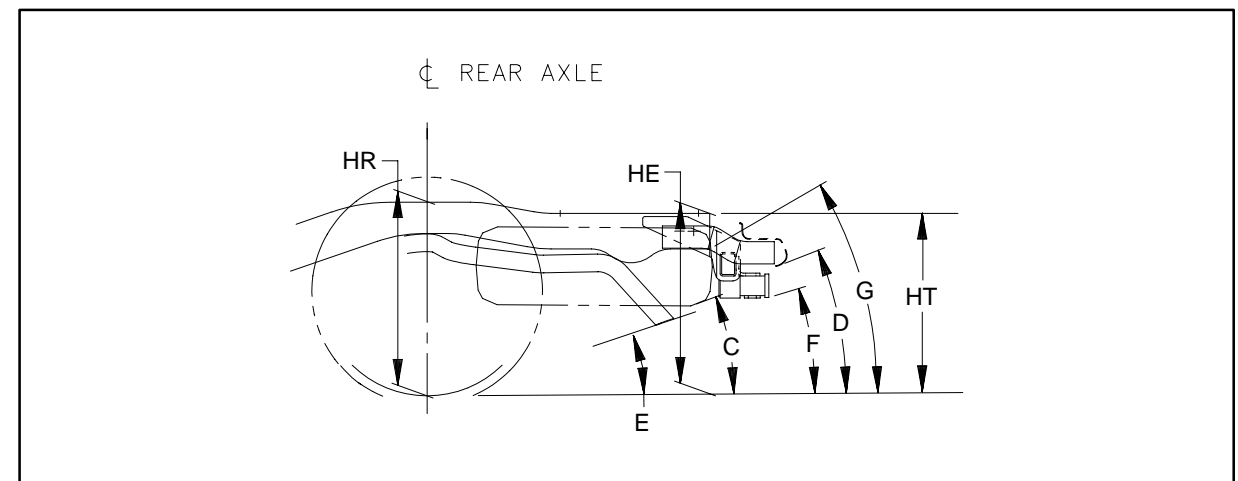
- HE Top of Frame at End
- HF Bottom of Front Air Deflector or Bumper
- HG Roof Height
- HM Normal Top of Frame
- HR Top of Frame at Centerline of Rear Axle
- HS Step H-Point-Front
- HS2 Step H-Point-Second
- HT Rear Cargo Load Height

Angle

- A Ramp breakover

Approach Angle(s) (Bottom of)

- B Front Air Deflector



Departure Angle(s) (Bottom of)

- C Spare Tire
- D Rear Bumper
- E Tailpipe
- F Platform Hitch
- G Frame at End

NOTE: All weights are in pounds, dimensions are in inches and angles are in degrees.

FRAME HEIGHTS AND RAMP ANGLE DATA

| S 10603 108.0" Wheelbase | | | | | | Frame Heights at Base Model Curb Weight | | | | | | | Frame Heights and Angular Dimensions are shown at Maximum GAWR Front/Rear | | | | | | | | | | | | |
|--------------------------|------------------------|------|------|------|------|---|------|------|------|------|------|------|---|------|------|------|------|------|------|----|----|----|----|----|---|
| GVW/Tire | Base Model Curb Weight | | | GAWR | | HE | HF | HG | HM | HR | HS | HT | HE | HF | HG | HM | HR | HS | HT | A | B | C | D | E | F |
| | Frnt | Rr | Ttl | Frnt | Rr | | | | | | | | | | | | | | | | | | | | |
| 1) 4200 P205/75R15 | 1757 | 1222 | 2979 | 2500 | 2300 | — | 12.4 | 62.6 | 14.7 | 25.5 | 17.9 | 26.8 | — | 9.8 | 60.7 | 12.5 | 22.4 | 15.9 | 22.7 | 20 | 22 | 17 | 15 | 17 | — |
| 2) 4200 P235/55R16 | 1776 | 1254 | 3030 | 2500 | 2300 | — | 10.9 | 61.5 | 13.5 | 24.7 | 16.8 | 26.2 | — | 7.8 | 59.7 | 11.0 | 21.7 | 14.6 | 22.4 | 17 | 17 | 16 | 15 | 16 | — |
| 2) 4600 P205/75R15 | 1767 | 1243 | 3010 | 2500 | 2700 | — | 12.4 | 63.6 | 15.4 | 27.2 | 18.9 | 28.9 | — | 10.5 | 61.2 | 13.1 | 22.7 | 16.5 | 23.1 | 21 | 23 | 18 | 16 | 18 | — |

| S 10803 118.0" Wheelbase | | | | | | Frame Heights at Base Model Curb Weight | | | | | | | Frame Heights and Angular Dimensions are shown at Maximum GAWR Front/Rear | | | | | | | | | | | | | |
|--------------------------|------------------------|------|------|------|------|---|------|------|------|------|------|------|---|------|------|------|------|------|------|----|----|----|----|----|---|----|
| GVW/Tire | Base Model Curb Weight | | | GAWR | | HE | HF | HG | HM | HR | HS | HT | HE | HF | HG | HM | HR | HS | HT | A | B | C | D | E | F | G |
| | Frnt | Rr | Ttl | Frnt | Rr | | | | | | | | | | | | | | | | | | | | | |
| 1) 4600 P205/75R15 | 1790 | 1248 | 3038 | 2500 | 2700 | 26.4 | 12.4 | 63.5 | 15.3 | 27.2 | 18.8 | 29.0 | 20.5 | 10.5 | 61.2 | 13.1 | 22.8 | 16.5 | 23.1 | 20 | 23 | 15 | 14 | 18 | — | 24 |
| 2) 4900 P205/75R15 | 1989 | 1266 | 3255 | 2500 | 2700 | 26.5 | 12.2 | 63.5 | 15.2 | 27.2 | 18.7 | 29.0 | 20.7 | 11.5 | 61.1 | 13.3 | 22.8 | 16.4 | 23.3 | 20 | 25 | 15 | 14 | 18 | — | 24 |

| S 10653 123.0" Wheelbase | | | | | | Frame Heights at Base Model Curb Weight | | | | | | | Frame Heights and Angular Dimensions are shown at Maximum GAWR Front/Rear | | | | | | | | | | | | | | |
|--------------------------|------------------------|------|------|------|------|---|------|------|------|------|------|------|---|----|------|------|------|------|------|------|------|----|----|----|----|----|---|
| GVW/Tire | Base Model Curb Weight | | | GAWR | | HE | HF | HG | HM | HR | HS | HS2 | HT | HE | HF | HG | HM | HR | HS | HS2 | HT | A | B | C | D | E | F |
| | Frnt | Rr | Ttl | Frnt | Rr | | | | | | | | | | | | | | | | | | | | | | |
| 1) 4400 P205/75R15 | 1851 | 1351 | 3202 | 2500 | 2300 | — | 12.7 | 62.4 | 14.6 | 25.1 | 17.7 | 19.0 | 26.1 | — | 10.8 | 60.8 | 12.8 | 22.4 | 16.0 | 17.1 | 22.9 | 18 | 24 | 18 | 15 | 17 | — |
| 2) 4400 P235/55R16 | 1870 | 1384 | 3253 | 2500 | 2300 | — | 10.6 | 61.1 | 13.0 | 24.3 | 16.4 | 17.7 | 25.7 | — | 8.0 | 59.4 | 10.8 | 21.7 | 14.3 | 15.9 | 22.7 | 14 | 18 | 17 | 15 | 16 | — |
| 2) 4600 P205/75R15 | 1855 | 1369 | 3224 | 2500 | 2700 | — | 12.3 | 63.3 | 15.1 | 26.8 | 18.5 | 20.0 | 28.5 | — | 10.5 | 61.2 | 13.1 | 22.8 | 16.5 | 17.6 | 23.2 | 19 | 23 | 18 | 16 | 18 | — |

NOTE: Front coil springs, torsion bars and adjusters are computer selected based on model options and calculated sprung curb weight. Actual heights may vary due to production tolerances.

- 1) Base vehicle
2) Optional GVWR—contain minimum equipment required

FRAME HEIGHTS AND RAMP ANGLE DATA

| T 10603 108.0" Wheelbase | | | | | | Frame Heights at Base Model Curb Weight | | | | | | | Frame Heights and Angular Dimensions are shown at Maximum GAWR Front/Rear | | | | | | | | | | | | |
|--------------------------|------------------------|------|------|------|------|---|------|------|------|------|------|------|---|------|------|------|------|------|------|----|----|----|----|----|---|
| GVW/Tire | Base Model Curb Weight | | | GAWR | | HE | HF | HG | HM | HR | HS | HT | HE | HF | HG | HM | HR | HS | HT | A | B | C | D | E | F |
| | Frnt | Rr | Ttl | Frnt | Rr | | | | | | | | | | | | | | | | | | | | |
| 1) 4650 P205/75R15 | 2220 | 1324 | 3544 | 2700 | 2300 | — | 13.8 | 64.0 | 16.1 | 27.0 | 19.3 | 28.3 | — | 12.7 | 62.4 | 14.6 | 24.1 | 17.7 | 24.6 | 20 | 27 | 20 | 18 | 23 | — |
| 2) 4650 31 X 10.5 R15 | 2249 | 1397 | 3646 | 2700 | 2300 | — | 17.3 | 67.8 | 19.8 | 30.9 | 23.1 | 32.3 | — | 16.4 | 66.1 | 18.3 | 27.6 | 21.4 | 28.0 | 28 | 35 | 26 | 22 | 26 | — |
| 2) 5150 P235/70R15 | 2220 | 1395 | 3615 | 2700 | 2700 | — | 13.8 | 65.1 | 16.9 | 28.7 | 20.4 | 30.5 | — | 13.1 | 62.7 | 15.0 | 24.7 | 18.1 | 25.3 | 21 | 28 | 22 | 19 | 25 | — |
| 2) 5150 P235/75R15 | 2217 | 1415 | 3632 | 2700 | 2700 | — | 14.3 | 65.6 | 17.4 | 29.2 | 20.9 | 30.9 | — | 13.9 | 63.4 | 15.6 | 25.2 | 18.7 | 25.8 | 22 | 30 | 23 | 19 | 26 | — |

| T 10803 118.0" Wheelbase | | | | | | Frame Heights at Base Model Curb Weight | | | | | | | Frame Heights and Angular Dimensions are shown at Maximum GAWR Front/Rear | | | | | | | | | | | | | |
|--------------------------|------------------------|------|------|------|------|---|------|------|------|------|------|------|---|------|------|------|------|------|------|----|----|----|----|----|---|----|
| GVW/Tire | Base Model Curb Weight | | | GAWR | | HE | HF | HG | HM | HR | HS | HT | HE | HF | HG | HM | HR | HS | HT | A | B | C | D | E | F | G |
| | Frnt | Rr | Ttl | Frnt | Rr | | | | | | | | | | | | | | | | | | | | | |
| 1) 5150 P235/70R15 | 2268 | 1316 | 3585 | 2700 | 2700 | 28.2 | 13.8 | 65.1 | 16.9 | 28.9 | 20.4 | 30.9 | 22.5 | 13.2 | 62.8 | 15.0 | 24.7 | 18.1 | 25.2 | 19 | 28 | 18 | 16 | 24 | — | 26 |
| 2) 5150 P235/75R15 | 2268 | 1316 | 3585 | 2700 | 2700 | 28.7 | 14.3 | 65.7 | 17.4 | 29.5 | 20.9 | 31.4 | 23.1 | 13.7 | 63.3 | 15.6 | 25.2 | 18.7 | 25.7 | 20 | 29 | 19 | 17 | 26 | — | 27 |

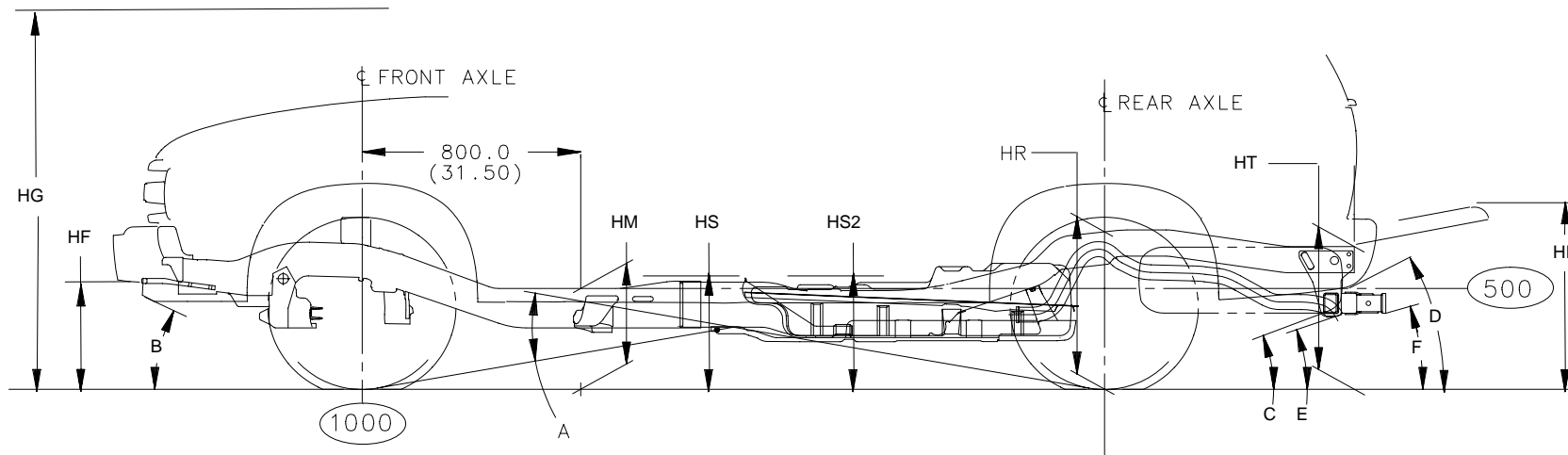
| T 10653 123.0" Wheelbase | | | | | | Frame Heights at Base Model Curb Weight | | | | | | | Frame Heights and Angular Dimensions are shown at Maximum GAWR Front/Rear | | | | | | | | | | | | | | |
|--------------------------|------------------------|------|------|------|------|---|------|------|------|------|------|------|---|----|------|------|------|------|------|------|------|----|----|----|----|----|---|
| GVW/Tire | Base Model Curb Weight | | | GAWR | | HE | HF | HG | HM | HR | HS | HS2 | HT | HE | HF | HG | HM | HR | HS | HS2 | HT | A | B | C | D | E | F |
| | Frnt | Rr | Ttl | Frnt | Rr | | | | | | | | | | | | | | | | | | | | | | |
| 1) 4650 P205/75R15 | 2382 | 1396 | 3778 | 2800 | 2300 | — | 13.8 | 63.9 | 15.9 | 26.7 | 19.1 | 20.4 | 27.9 | — | 12.7 | 62.6 | 14.7 | 24.1 | 17.9 | 19.1 | 24.5 | 18 | 27 | 20 | 17 | 22 | — |
| 2) 4900 31 X 10.5 R15 | 2417 | 1538 | 3955 | 2800 | 2700 | — | 17.1 | 68.0 | 19.9 | 31.5 | 23.3 | 24.7 | 33.1 | — | 16.4 | 66.4 | 18.5 | 27.4 | 21.7 | 23.0 | 27.6 | 26 | 35 | 26 | 21 | 25 | — |
| 2) 5150 P235/70R15 | 2328 | 1446 | 3775 | 2800 | 2700 | — | 13.9 | 65.0 | 16.7 | 28.5 | 20.2 | 21.6 | 30.2 | — | 13.0 | 62.9 | 15.0 | 24.6 | 18.2 | 19.4 | 25.2 | 19 | 28 | 22 | 19 | 24 | — |
| 2) 5150 P235/75R15 | 2358 | 1446 | 3775 | 2800 | 2700 | — | 14.4 | 65.5 | 17.2 | 29.1 | 20.7 | 22.2 | 30.7 | — | 13.8 | 63.5 | 15.7 | 25.2 | 18.8 | 19.8 | 25.8 | 20 | 30 | 23 | 19 | 25 | — |

NOTE: Front coil springs, torsion bars and adjusters are computer selected based on model options and calculated sprung curb weight. Actual heights may vary due to production tolerances.

- 1) Base vehicle
- 2) Optional GVWR—contain minimum equipment required

FRAME HEIGHTS AND RAMP ANGLE DATA

S/T 10506 4-Door Utility



Heights (To Ground)

- HF Bottom of Front Air Deflector or Bumper
- HG Roof Height
- HM Normal Top of Frame
- HP Top of Tailgate (Down)
- HR Top of Frame at Centerline of Rear Axle
- HS Step H-Point-Front
- HS2 Step H-Point-Second
- HT Rear Cargo Load Height

Angle

- A Ramp breakover
- Approach Angle(s) (Bottom of)**
- B Front Air Deflector
- Departure Angle(s) (Bottom of)**
- C Spare Tire
 - D Rear Bumper
 - E Tailpipe
 - F Platform Hitch

NOTE: All weights are in pounds, dimensions are in inches and angles are in degrees.

FRAME HEIGHTS AND RAMP ANGLE DATA

| S 10506 | | 107.0" Wheelbase | | | | Frame Heights at Base Model Curb Weight | | | | | | | | Frame Heights and Angular Dimensions are shown at Maximum GAWR Front/Rear | | | | | | | | | | | | | |
|-----------------------|------------------------|------------------|------|------|------|---|------|------|------|------|------|------|------|---|------|------|------|------|------|------|------|----|----|----|----|----|----|
| GVW/Tire | Base Model Curb Weight | | | GAWR | | HF | HG | HM | HR | HP | HS | HS2 | HT | HF | HG | HM | HR | HP | HS | HS2 | HT | A | B | C | D | E | F |
| | Frt | Rr | Ttl | Frt | Rr | | | | | | | | | | | | | | | | | | | | | | |
| 1) 5000 P205/75R15 | 2029 | 1652 | 3682 | 2500 | 2700 | 13.4 | 64.8 | 16.0 | 24.9 | 32.0 | 19.4 | 19.4 | 30.3 | 12.3 | 62.7 | 14.3 | 22.0 | 28.1 | 17.5 | 17.0 | 26.8 | 20 | 26 | 21 | 22 | 19 | 17 |
| 2) 5000 P235/70R15 | 2028 | 1667 | 3696 | 2500 | 2700 | 13.8 | 65.2 | 16.4 | 25.3 | 32.4 | 19.8 | 19.8 | 30.7 | 12.7 | 63.1 | 14.8 | 22.4 | 28.5 | 17.9 | 17.4 | 27.2 | 21 | 27 | 22 | 23 | 20 | 17 |
| 2) 5000 P235/70R15 | 2026 | 1666 | 3693 | 2500 | 2800 | 14.4 | 35.4 | 16.7 | 25.3 | 32.3 | 20.0 | 19.9 | 30.6 | 13.4 | 63.4 | 15.2 | 22.4 | 28.1 | 18.3 | 17.6 | 27.0 | 22 | 29 | 22 | 22 | 20 | 17 |

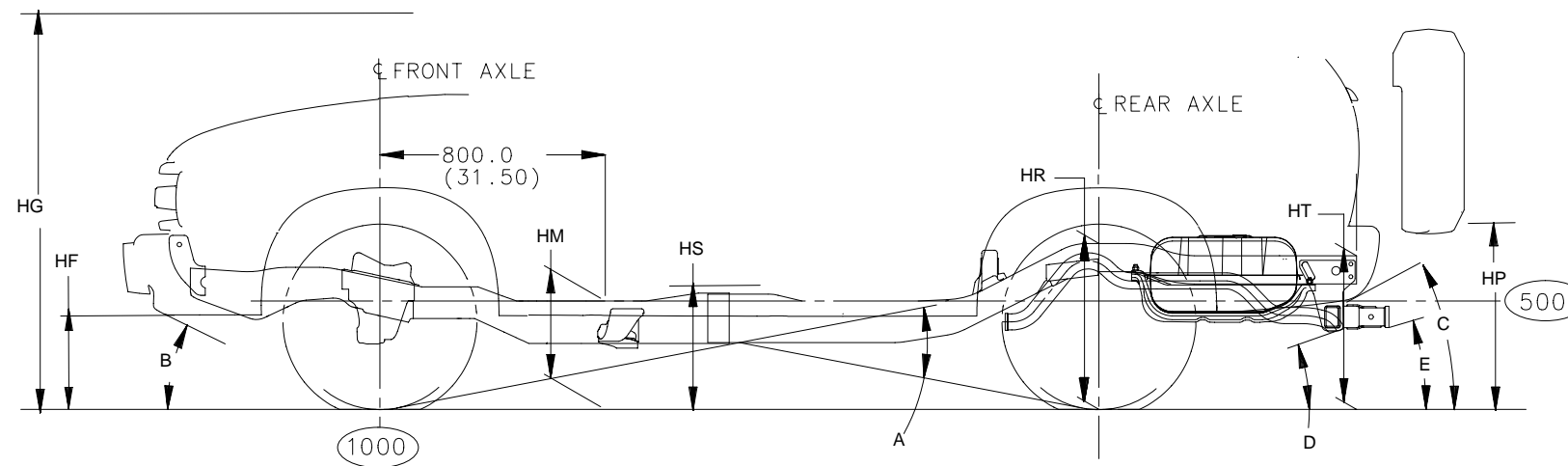
| T 10506 | | 107.0" Wheelbase | | | | Frame Heights at Base Model Curb Weight | | | | | | | | Frame Heights and Angular Dimensions are shown at Maximum GAWR Front/Rear | | | | | | | | | | | | | |
|-----------------------|------------------------|------------------|------|------|------|---|------|------|------|------|------|------|------|---|------|------|------|------|------|------|------|----|----|----|----|----|----|
| GVW/Tire | Base Model Curb Weight | | | GAWR | | HF | HG | HM | HP | HR | HS | HS2 | HT | HF | HG | HM | HP | HR | HS | HS2 | HT | A | B | C | D | E | F |
| | Frt | Rr | Ttl | Frt | Rr | | | | | | | | | | | | | | | | | | | | | | |
| 1) 5350 P205/75R15 | 2300 | 1782 | 4082 | 2800 | 2700 | 13.8 | 64.6 | 16.0 | 31.3 | 24.4 | 19.3 | 19.1 | 29.8 | 12.0 | 62.5 | 14.1 | 28.2 | 22.0 | 17.3 | 17.0 | 26.9 | 20 | 26 | 21 | 22 | 20 | 17 |
| 2) 5350 P235/70R15 | 2299 | 1797 | 4097 | 2800 | 2700 | 14.2 | 65.0 | 16.4 | 31.7 | 24.8 | 19.7 | 19.5 | 30.1 | 12.4 | 63.0 | 14.5 | 28.7 | 22.4 | 17.7 | 17.4 | 27.3 | 21 | 27 | 22 | 23 | 20 | 18 |
| 2) 5350 P235/70R15 | 2297 | 1796 | 4093 | 2800 | 2900 | 14.2 | 64.8 | 16.4 | 31.4 | 24.6 | 19.5 | 19.3 | 29.8 | 12.7 | 63.2 | 14.8 | 28.2 | 22.4 | 18.0 | 17.5 | 27.0 | 21 | 27 | 22 | 22 | 20 | 17 |
| 2) 5350 P235/75R15 | 2323 | 1748 | 4072 | 2800 | 2900 | 14.6 | 65.6 | 17.0 | 32.4 | 25.5 | 20.2 | 20.1 | 30.8 | 13.0 | 63.5 | 15.1 | 28.0 | 22.5 | 18.3 | 17.7 | 27.0 | 22 | 28 | 22 | 22 | 20 | 17 |

NOTE: Front coil springs, torsion bars and adjusters are computer selected based on model options and calculated sprung curb weight. Actual heights may vary due to production tolerances.

- 1) Base vehicle
- 2) Optional GVWR—contain minimum equipment required

FRAME HEIGHTS AND RAMP ANGLE DATA

S/T 10516 2-Door Utility



Heights (To Ground)

| | |
|----|---|
| HF | Bottom of Front Air Deflector or Bumper |
| HG | Roof Height |
| HM | Normal Top of Frame |
| HP | Top of Tailgate (Down) |
| HR | Top of Frame at Centerline of Rear Axle |
| HS | Step H-Point-Front |
| HT | Rear Cargo Load Height |

Angle

| | |
|---|----------------|
| A | Ramp Breakover |
|---|----------------|

Approach Angle(s) (Bottom of)

| | |
|---|---------------------|
| B | Front Air Deflector |
|---|---------------------|

Departure Angle(s) (Bottom of)

| | |
|---|----------------|
| C | Rear Bumper |
| D | Tailpipe |
| E | Platform Hitch |

NOTE: All weights are in pounds, dimensions are in inches and angles are in degrees.

FRAME HEIGHTS AND RAMP ANGLE DATA

| S 10516 100.5" Wheelbase | | | | | | Frame Heights at Base Model Curb Weight | | | | | | | Frame Heights and Angular Dimensions are shown at Maximum GAWR Front/Rear | | | | | | | | | | | |
|--------------------------|------------------------|------|------|------|------|---|------|------|------|------|------|------|---|------|------|------|------|------|------|----|----|----|----|----|
| GVW/Tire | Base Model Curb Weight | | | GAWR | | HF | HG | HM | HP | HR | HS | HT | HF | HG | HM | HP | HR | HS | HT | A | B | C | D | E |
| | Frt | Rr | Ttl | Frt | Rr | | | | | | | | | | | | | | | | | | | |
| 1) 4450 P205/75R15 | 1909 | 1636 | 3545 | 2200 | 2600 | 13.7 | 65.1 | 16.3 | 32.1 | 25.0 | 19.6 | 30.2 | 13.2 | 63.7 | 15.2 | 28.2 | 22.5 | 18.4 | 26.9 | 23 | 28 | 22 | 20 | 17 |
| 2) 4450 P235/70R15 | 1909 | 1642 | 3551 | 2200 | 2600 | 14.1 | 65.6 | 16.7 | 32.5 | 25.4 | 20.1 | 30.7 | 13.6 | 64.1 | 15.6 | 28.6 | 22.9 | 18.8 | 27.3 | 24 | 29 | 23 | 21 | 18 |

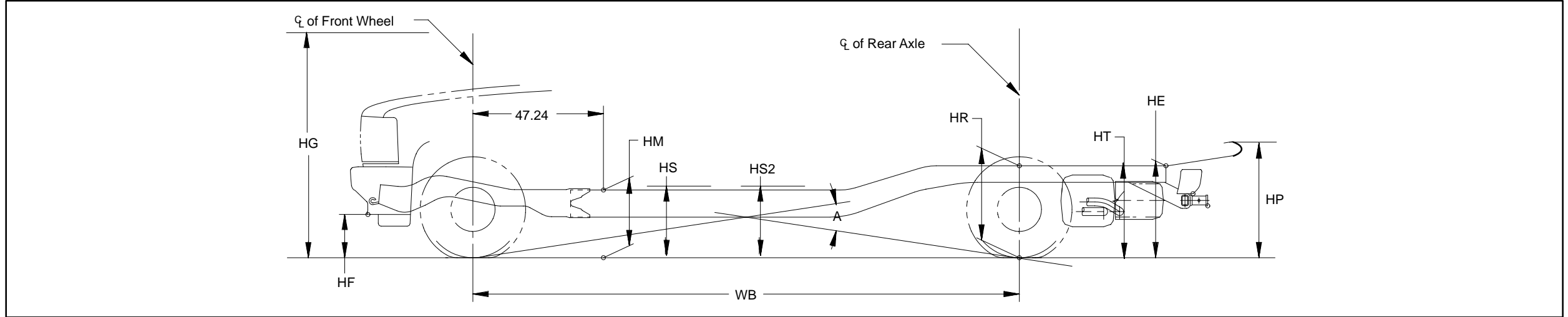
| T 10516 100.5" Wheelbase | | | | | | Frame Heights at Base Model Curb Weight | | | | | | | Frame Heights and Angular Dimensions are shown at Maximum GAWR Front/Rear | | | | | | | | | | | |
|--------------------------|------------------------|------|------|------|------|---|------|------|------|------|------|------|---|------|------|------|------|------|------|----|----|----|----|----|
| GVW/Tire | Base Model Curb Weight | | | GAWR | | HF | HG | HM | HP | HR | HS | HT | HF | HG | HM | HP | HR | HS | HT | A | B | C | D | E |
| | Frt | Rr | Ttl | Frt | Rr | | | | | | | | | | | | | | | | | | | |
| 1) 4850 P205/75R15 | 2116 | 1730 | 3847 | 2500 | 2600 | 13.8 | 64.9 | 16.2 | 31.6 | 24.7 | 19.4 | 29.8 | 12.4 | 63.3 | 14.7 | 28.5 | 22.5 | 17.9 | 27.1 | 23 | 27 | 22 | 20 | 17 |
| 2) 4850 P235/70R15 | 2116 | 1730 | 3847 | 2500 | 2700 | 14.3 | 65.1 | 16.5 | 31.6 | 24.8 | 19.7 | 29.9 | 13.1 | 63.8 | 15.2 | 28.5 | 22.7 | 18.4 | 27.2 | 24 | 28 | 23 | 21 | 18 |
| 2) 4850 P235/75R15 | 2114 | 1767 | 3880 | 2500 | 2700 | 14.8 | 65.5 | 17.0 | 31.9 | 25.2 | 20.1 | 30.2 | 13.6 | 64.3 | 15.7 | 29.0 | 23.3 | 18.9 | 27.7 | 25 | 29 | 23 | 21 | 18 |
| 2) 5000 31 X 10.5 R15 | 2212 | 1794 | 4007 | 2500 | 2700 | 17.7 | 67.7 | 19.4 | 33.7 | 27.3 | 22.5 | 32.1 | 17.2 | 66.3 | 18.4 | 30.6 | 25.2 | 21.2 | 29.4 | 31 | 36 | 26 | 25 | 21 |

NOTE: Front coil springs, torsion bars and adjusters are computer selected based on model options and calculated sprung curb weight. Actual heights may vary due to production tolerances.

- 1) Base vehicle
- 2) Optional GVWR—contain minimum equipment required

FRAME HEIGHTS AND RAMP ANGLE DATA

C/K Truck (Current)



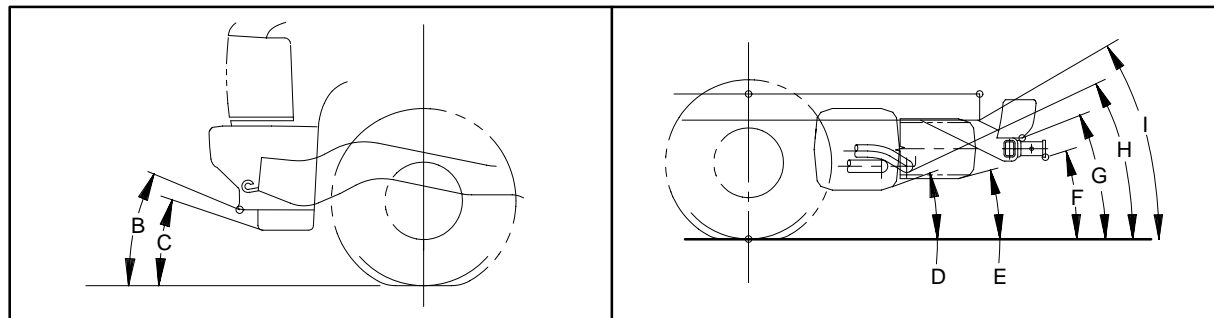
Heights (To Ground)

- HE Top of Frame at End
- HF Bottom of Front Air Deflector or Bumper
- HG Roof height to ground
- HM Normal Top of Frame
- HP Top of Tailgate
- HR Top of Frame at Centerline of Rear Axle
- HS Step H-Point–Front
- HS2 Step H-Point–Second
- HT Rear Cargo Load Height

Angle

- A Ramp Breakover
- Approach Angle(s) (Bottom of)**
- B Front Bumper
 - C Front Air Deflector
- Departure Angles(s) (Bottom of)**
- D Fuel Tank and Shield
 - E Spare Tire
 - F Platform Hitch
 - G Rear Bumper
 - H Exhaust
 - I Frame at End

NOTE: All weights are in pounds, dimensions are in inches and angles are in degrees.



FRAME HEIGHTS AND RAMP ANGLE DATA

| C 10516 | | 111.5" Wheelbase | | | | | Frame Heights at Base Model Curb Weight | | | | | | Frame Heights and Angular Dimensions are shown at Maximum GAWR Front/Rear | | | | | | | | | | | | | | | |
|-----------------------|------------------------|------------------|------|------|------|------|---|------|------|------|------|------|---|------|------|------|------|------|------|----|----|----|----|---|----|----|----|---|
| GVW/Tire | Base Model Curb Weight | | | GAWR | | HF | HG | HM | HP | HR | HS | HT | HF | HG | HM | HP | HR | HS | HT | A | B | C | D | E | F | G | H | I |
| | Frt | Rr | Ttl | Frt | Rr | | | | | | | | | | | | | | | | | | | | | | | |
| 1) 6100 P235/75R15 | 2409 | 2102 | 4511 | 3200 | 3686 | 10.4 | 71.4 | 18.7 | 33.6 | 26.9 | 19.8 | 29.4 | 8.2 | 69.8 | 16.8 | 29.7 | 24.1 | 18.0 | 26.0 | 25 | 29 | 20 | 25 | — | 19 | 26 | 32 | — |
| 2) 6100 P235/75R15 | 2409 | 2102 | 4511 | 3500 | 3686 | 10.4 | 71.4 | 18.7 | 33.6 | 26.9 | 19.8 | 29.4 | 7.1 | 70.6 | 16.6 | 29.7 | 24.1 | 17.8 | 26.0 | 25 | 27 | 18 | 25 | — | 19 | 26 | 32 | — |
| 2) 6100 P235/75R15 | 2409 | 2102 | 4511 | 3526 | 3686 | 10.4 | 71.4 | 18.7 | 33.6 | 26.9 | 19.8 | 29.4 | 7.0 | 70.6 | 16.6 | 29.7 | 24.1 | 17.7 | 26.0 | 25 | 27 | 18 | 25 | — | 19 | 26 | 32 | — |

| C 10706 | | 117.5" Wheelbase | | | | | Frame Heights at Base Model Curb Weight | | | | | | Frame Heights and Angular Dimensions are shown at 25 Maximum GAWR Front/Rear 25 | | | | | | | | | | | | | | | | | |
|-----------------------|------------------------|------------------|------|------|------|------|---|------|------|------|------|------|---|-----|------|------|------|------|------|------|------|----|----|----|---|----|----|----|----|---|
| GVW/Tire | Base Model Curb Weight | | | GAWR | | HF | HG | HM | HP | HR | HS | HS2 | HT | HF | HG | HM | HP | HR | HS | HS2 | HT | A | B | C | D | E | F | G | H | I |
| | Frt | Rr | Ttl | Frt | Rr | | | | | | | | | | | | | | | | | | | | | | | | | |
| 1) 6300 P235/75R15 | 2743 | 2232 | 4975 | 3200 | 3448 | 10.4 | 72.3 | 18.2 | 32.0 | 25.9 | 19.1 | 19.5 | 28.0 | 9.5 | 70.5 | 16.8 | 27.5 | 22.9 | 17.8 | 17.5 | 24.1 | 23 | 31 | 22 | — | 16 | 14 | 19 | 23 | — |
| 2) 6300 P235/70R15 | 2681 | 2254 | 4936 | 3200 | 3686 | 10.4 | 72.7 | 18.3 | 32.5 | 26.2 | 19.3 | 19.8 | 28.5 | 9.3 | 71.0 | 16.9 | 28.2 | 23.4 | 17.9 | 17.8 | 24.7 | 23 | 31 | 22 | — | 17 | 15 | 20 | 25 | — |
| 2) 6300 P235/75R15 | 2681 | 2254 | 4936 | 3500 | 3686 | 10.4 | 72.7 | 18.3 | 32.5 | 26.2 | 19.3 | 19.8 | 28.5 | 8.2 | 71.8 | 16.7 | 28.2 | 23.4 | 17.9 | 17.8 | 24.7 | 23 | 29 | 20 | — | 17 | 15 | 20 | 25 | — |
| 2) 6300 P235/75R15 | 2681 | 2254 | 4936 | 3526 | 3686 | 10.4 | 72.7 | 18.3 | 32.5 | 26.2 | 19.3 | 19.8 | 28.5 | 8.1 | 71.8 | 16.7 | 28.2 | 23.4 | 17.9 | 17.8 | 24.7 | 23 | 29 | 20 | — | 17 | 15 | 20 | 25 | — |

| C 10753 | | 141.5" Wheelbase | | | | | Frame Heights at Base Model Curb Weight | | | | | | Frame Heights and Angular Dimensions are shown at Maximum GAWR Front/Rear | | | | | | | | | | | | | | | | | |
|-----------------------|------------------------|------------------|------|------|------|------|---|------|------|------|------|------|---|------|-----|------|------|------|------|------|------|----|----|----|---|----|----|----|----|----|
| GVW/Tire | Base Model Curb Weight | | | GAWR | | HE | HF | HG | HM | HR | HS | HS2 | HT | HE | HF | HG | HM | HR | HS | HS2 | HT | A | B | C | D | E | F | G | H | I |
| | Frt | Rr | Ttl | Frt | Rr | | | | | | | | | | | | | | | | | | | | | | | | | |
| 1) 6200 P235/75R15 | 2415 | 1705 | 4120 | 3500 | 3686 | 28.5 | 10.4 | 70.6 | 18.8 | 27.7 | 19.9 | 22.3 | 31.4 | 22.7 | 7.5 | 68.1 | 16.0 | 23.0 | 17.1 | 19.7 | 25.5 | 18 | 28 | 19 | — | 19 | 17 | 23 | 26 | 33 |
| 2) 6200 P235/75R15 | 2415 | 1705 | 4120 | 3600 | 3686 | 28.5 | 10.4 | 70.6 | 18.8 | 27.7 | 19.9 | 22.3 | 31.4 | 22.7 | 7.1 | 68.1 | 15.9 | 23.0 | 17.0 | 19.7 | 25.5 | 18 | 27 | 18 | — | 19 | 17 | 23 | 26 | 33 |

NOTE: Front coil springs, torsion bars and adjusters are computer selected based on model options and calculated sprung curb weight. Actual heights may vary due to production tolerances.

- 1) Base vehicle
- 2) Optional GVWR—contain minimum equipment required

FRAME HEIGHTS AND RAMP ANGLE DATA

| C 10906 | | 131.5" Wheelbase | | | | Frame Heights at Base Model Curb Weight | | | | | | | Frame Heights and Angular Dimensions are shown at Maximum GAWR Front/Rear | | | | | | | | | | | | | | | | | |
|------------------------|------------------------|------------------|------|------|------|---|------|------|------|------|------|------|---|------|------|------|------|------|------|------|------|----|----|----|----|---|----|----|----|---|
| GVW/Tire | Base Model Curb Weight | | | GAWR | | HF | HG | HM | HP | HR | HS | HS2 | HT | HF | HG | HM | HP | HR | HS | HS2 | HT | A | B | C | D | E | F | G | H | I |
| | Frnt | Rr | Ttl | Frnt | Rr | | | | | | | | | | | | | | | | | | | | | | | | | |
| 1) 6800 P235/75R15 | 2368 | 2439 | 4808 | 2950 | 3968 | 10.2 | 71.3 | 18.2 | 33.3 | 26.5 | 19.4 | 20.1 | 29.2 | 8.7 | 68.8 | 16.3 | 30.1 | 23.9 | 17.4 | 17.9 | 26.2 | 20 | 30 | 21 | 19 | — | 15 | 20 | 25 | — |
| 2) 6800 P235/75R15 | 2368 | 2439 | 4808 | 3200 | 3968 | 10.2 | 71.3 | 18.2 | 33.3 | 26.5 | 19.4 | 20.1 | 29.2 | 7.8 | 69.2 | 16.0 | 30.1 | 23.9 | 17.1 | 17.9 | 26.2 | 20 | 28 | 19 | 19 | — | 15 | 20 | 25 | — |
| 2) 6800 P235/75R15 | 2368 | 2439 | 4808 | 3400 | 3968 | 10.2 | 71.3 | 18.2 | 33.3 | 26.5 | 19.4 | 20.1 | 29.2 | 7.0 | 69.7 | 15.7 | 30.1 | 23.9 | 16.9 | 17.9 | 26.2 | 20 | 27 | 18 | 19 | — | 15 | 20 | 25 | — |
| 2) 7700 LT245/75R16 | 2860 | 2718 | 5578 | 3600 | 6084 | 12.7 | 73.6 | 20.7 | 35.6 | 28.9 | 21.8 | 22.5 | 31.5 | 11.3 | 72.0 | 19.2 | 29.9 | 25.7 | 20.3 | 21.0 | 26.6 | 25 | 34 | 26 | 20 | — | 15 | 20 | 26 | — |
| 2) 7700 LT245/75R16 | 2860 | 2718 | 5578 | 3800 | 6084 | 12.7 | 73.6 | 20.7 | 35.6 | 28.9 | 21.8 | 22.5 | 31.5 | 10.8 | 72.2 | 19.0 | 29.9 | 25.7 | 20.1 | 21.0 | 26.6 | 24 | 33 | 25 | 20 | — | 15 | 20 | 26 | — |

| K 10516 | | 111.5" Wheelbase | | | | Frame Heights at Base Model Curb Weight | | | | | | | Frame Heights and Angular Dimensions are shown at Maximum GAWR Front/Rear | | | | | | | | | | | | | | | |
|------------------------|------------------------|------------------|------|------|------|---|------|------|------|------|------|------|---|------|------|------|------|------|------|----|----|----|----|---|----|----|----|---|
| GVW/Tire | Base Model Curb Weight | | | GAWR | | HF | HG | HM | HP | HR | HS | HT | HF | HG | HM | HP | HR | HS | HT | A | B | C | D | E | F | G | H | I |
| | Frnt | Rr | Ttl | Frnt | Rr | | | | | | | | | | | | | | | | | | | | | | | |
| 1) 6250 P245/75R16 | 2681 | 2198 | 4880 | 3925 | 3750 | 13.4 | 73.2 | 19.7 | 35.0 | 28.7 | 22.2 | 31.0 | 9.2 | 73.1 | 17.7 | 31.0 | 26.0 | 20.1 | 27.6 | 24 | 31 | 22 | 28 | — | 21 | 28 | 35 | — |
| 2) 6250 LT245/75R16 | 2681 | 2198 | 4880 | 3925 | 3750 | 13.6 | 73.4 | 19.9 | 35.2 | 28.9 | 22.4 | 31.2 | 9.6 | 73.3 | 18.0 | 31.4 | 26.4 | 20.4 | 27.9 | 24 | 31 | 23 | 29 | — | 21 | 28 | 36 | — |
| 2) 6250 P265/75R16 | 2681 | 2198 | 4880 | 3925 | 3750 | 14.0 | 73.9 | 20.4 | 35.7 | 29.3 | 22.8 | 31.6 | 9.9 | 73.8 | 18.3 | 31.7 | 26.7 | 20.8 | 28.2 | 25 | 32 | 24 | 30 | — | 22 | 29 | 37 | — |
| 2) 6450 P245/75R16 | 3100 | 2206 | 5307 | 3925 | 3750 | 13.2 | 73.2 | 19.8 | 35.1 | 28.8 | 22.1 | 31.0 | 10.9 | 72.6 | 18.4 | 30.9 | 26.2 | 20.7 | 27.5 | 25 | 34 | 26 | 28 | — | 21 | 28 | 35 | — |
| 2) 6450 LT245/75R16 | 3100 | 2206 | 5307 | 3925 | 3750 | 13.5 | 73.4 | 20.0 | 35.2 | 29.0 | 22.3 | 31.2 | 11.3 | 72.8 | 18.7 | 31.3 | 26.5 | 21.0 | 27.9 | 25 | 34 | 26 | 28 | — | 21 | 28 | 35 | — |
| 2) 6450 P265/75R16 | 3100 | 2206 | 5307 | 3925 | 3750 | 13.8 | 73.9 | 20.4 | 35.7 | 29.5 | 22.7 | 31.6 | 11.6 | 73.2 | 19.1 | 31.5 | 26.9 | 21.3 | 28.2 | 26 | 35 | 27 | 30 | — | 22 | 29 | 37 | — |

NOTE: Front coil springs, torsion bars and adjusters are computer selected based on model options and calculated sprung curb weight. Actual heights may vary due to production tolerances.

- 1) Base vehicle
- 2) Optional GVWR—contain minimum equipment required

FRAME HEIGHTS AND RAMP ANGLE DATA

| K 10706 | | 117.5" Wheelbase | | | | Frame Heights at Base Model Curb Weight | | | | | | | Frame Heights and Angular Dimensions are shown at Maximum GAWR Front/Rear | | | | | | | | | | | | | | | | | |
|-----------------------|------------------------|------------------|------|------|------|---|------|------|------|------|------|------|---|------|------|------|------|------|------|------|------|----|----|----|---|----|----|----|----|---|
| GVW/Tire | Base Model Curb Weight | | | GAWR | | HF | HG | HM | HP | HR | HS | HS2 | HT | HF | HG | HM | HP | HR | HS | HS2 | HT | A | B | C | D | E | F | G | H | I |
| | Frt | Rr | Ttl | Frt | Rr | | | | | | | | | | | | | | | | | | | | | | | | | |
| 1) 6800 P245/75R16 | 2932 | 2432 | 5364 | 3600 | 3750 | 13.4 | 74.9 | 19.5 | 34.5 | 28.3 | 21.9 | 22.2 | 30.5 | 11.0 | 73.5 | 17.6 | 31.1 | 25.9 | 20.0 | 20.4 | 27.6 | 23 | 34 | 26 | — | 21 | 18 | 24 | 31 | — |
| 2) 6800 P245/75R16 | 2966 | 2519 | 5486 | 3600 | 3750 | 13.5 | 74.8 | 19.5 | 34.3 | 28.2 | 21.9 | 22.1 | 30.3 | 11.2 | 73.6 | 17.7 | 31.2 | 26.0 | 20.1 | 20.5 | 27.6 | 23 | 35 | 26 | — | 21 | 18 | 24 | 31 | — |

| K 10753 | | 141.5" Wheelbase | | | | Frame Heights at Base Model Curb Weight | | | | | | | Frame Heights and Angular Dimensions are shown at Maximum GAWR Front/Rear | | | | | | | | | | | | | | | | | |
|------------------------|------------------------|------------------|------|------|------|---|------|------|------|------|------|------|---|------|------|------|------|------|------|------|------|----|----|----|---|----|----|----|----|----|
| GVW/Tire | Base Model Curb Weight | | | GAWR | | HE | HF | HG | HM | HR | HS | HS2 | HT | HE | HF | HG | HM | HR | HS | HS2 | HT | A | B | C | D | E | F | G | H | I |
| | Frt | Rr | Ttl | Frt | Rr | | | | | | | | | | | | | | | | | | | | | | | | | |
| 1) 6200 P245/75R16 | 2726 | 1771 | 4498 | 3925 | 3750 | 29.6 | 13.3 | 72.6 | 19.7 | 29.1 | 22.2 | 24.3 | 32.4 | 24.2 | 10.3 | 70.8 | 17.4 | 25.0 | 19.8 | 22.4 | 27.0 | 19 | 33 | 25 | — | 21 | 19 | 24 | 30 | 35 |
| 2) 6200 LT245/75R16 | 2726 | 1771 | 4498 | 3925 | 3750 | 29.7 | 13.6 | 72.8 | 20.0 | 29.3 | 22.4 | 24.5 | 32.6 | 24.6 | 10.6 | 71.0 | 17.7 | 25.3 | 20.1 | 22.7 | 27.4 | 19 | 33 | 25 | — | 21 | 19 | 25 | 30 | 35 |
| 2) 6200 P265/75R16 | 2726 | 1771 | 4498 | 3925 | 3750 | 30.2 | 14.0 | 73.3 | 20.4 | 29.8 | 22.8 | 24.9 | 33.1 | 24.9 | 10.9 | 71.4 | 18.0 | 25.7 | 20.5 | 23.1 | 27.7 | 20 | 34 | 26 | — | 22 | 19 | 25 | 32 | 36 |
| 2) 6600 P245/75R16 | 2726 | 1866 | 4593 | 3925 | 3750 | 29.5 | 13.3 | 72.6 | 19.7 | 29.1 | 22.2 | 24.3 | 32.4 | 24.6 | 10.4 | 70.4 | 17.2 | 25.1 | 19.6 | 22.1 | 27.4 | 18 | 33 | 25 | — | 22 | 19 | 25 | 31 | 36 |
| 2) 6600 LT245/75R16 | 2726 | 1866 | 4593 | 3925 | 3750 | 29.7 | 13.6 | 72.8 | 19.9 | 29.3 | 22.4 | 24.5 | 32.5 | 25.0 | 10.8 | 70.7 | 17.5 | 25.5 | 19.9 | 22.3 | 27.8 | 18 | 33 | 25 | — | 22 | 19 | 25 | 31 | 36 |
| 2) 6600 P265/75R16 | 2726 | 1866 | 4593 | 3925 | 3750 | 30.2 | 14.0 | 73.2 | 20.4 | 29.7 | 22.8 | 24.9 | 33.0 | 25.3 | 11.0 | 71.1 | 17.8 | 25.8 | 20.2 | 22.7 | 28.1 | 19 | 35 | 26 | — | 23 | 20 | 26 | 33 | 37 |

NOTE: Front coil springs, torsion bars and adjusters are computer selected based on model options and calculated sprung curb weight. Actual heights may vary due to production tolerances.

- 1) Base vehicle
- 2) Optional GVWR—contain minimum equipment required

FRAME HEIGHTS AND RAMP ANGLE DATA

| K 10906 | | 131.5" Wheelbase | | | | Frame Heights at Base Model Curb Weight | | | | | | | Frame Heights and Angular Dimensions are shown at Maximum GAWR Front/Rear | | | | | | | | | | | | | | | | | |
|------------------------|------------------------|------------------|------|------|------|---|------|------|------|------|------|------|---|------|------|------|------|------|------|------|------|----|----|----|----|---|----|----|----|---|
| GVW/Tire | Base Model Curb Weight | | | GAWR | | HF | HG | HM | HP | HR | HS | HS2 | HT | HF | HG | HM | HP | HR | HS | HS2 | HT | A | B | C | D | E | F | G | H | I |
| | Frt | Rr | Ttl | Frt | Rr | | | | | | | | | | | | | | | | | | | | | | | | | |
| 1) 7300 P245/75R16 | 2701 | 2583 | 5284 | 3925 | 4000 | 13.5 | 72.9 | 19.5 | 34.3 | 28.2 | 21.9 | 22.2 | 31.3 | 10.4 | 71.5 | 17.1 | 31.4 | 25.7 | 19.6 | 20.1 | 28.5 | 20 | 33 | 25 | 22 | — | 17 | 22 | 29 | — |
| 2) 7300 LT245/75R16 | 2701 | 2583 | 5284 | 3925 | 4000 | 13.7 | 73.1 | 19.7 | 34.5 | 28.4 | 22.1 | 22.4 | 31.5 | 10.7 | 71.8 | 17.5 | 31.8 | 26.1 | 19.9 | 20.4 | 28.9 | 20 | 33 | 25 | 22 | — | 17 | 22 | 29 | — |
| 2) 8050 LT245/75R16 | 3206 | 2797 | 6004 | 3925 | 4800 | 14.1 | 74.5 | 20.5 | 36.2 | 29.7 | 22.9 | 23.5 | 33.1 | 13.1 | 72.9 | 19.2 | 32.7 | 27.3 | 21.7 | 21.8 | 29.9 | 23 | 38 | 30 | 23 | — | 18 | 23 | 31 | — |

| C 20743 | | 154.5" Wheelbase | | | | Frame Heights at Base Model Curb Weight | | | | | | | Frame Heights and Angular Dimensions are shown at Maximum GAWR Front/Rear | | | | | | | | | | | | | | | | | |
|------------------------|------------------------|------------------|------|------|------|---|------|------|------|------|------|------|---|------|------|------|------|------|------|------|------|----|----|---|---|----|----|----|----|----|
| GVW/Tire | Base Model Curb Weight | | | GAWR | | HE | HF | HG | HM | HR | HS | HS2 | HT | HE | HF | HG | HM | HR | HS | HS2 | HT | A | B | C | D | E | F | G | H | I |
| | Frt | Rr | Ttl | Frt | Rr | | | | | | | | | | | | | | | | | | | | | | | | | |
| 1) 8600 LT245/75R16 | 3030 | 2284 | 5314 | 3600 | 5690 | 31.4 | 16.3 | 73.8 | 20.7 | 30.2 | 21.6 | 23.0 | 34.6 | 25.8 | 15.6 | 70.9 | 18.7 | 25.8 | 19.6 | 20.4 | 29.0 | 19 | 33 | — | — | 24 | 18 | 26 | 28 | 36 |
| 2) 8600 LT245/75R16 | 3309 | 2274 | 5583 | 3800 | 5690 | 31.3 | 17.6 | 74.3 | 21.6 | 30.4 | 22.5 | 23.5 | 34.5 | 25.5 | 17.4 | 71.5 | 19.8 | 25.8 | 20.8 | 21.1 | 28.6 | 22 | 37 | — | — | 24 | 17 | 25 | 27 | 35 |

| C 20903 | | 131.5" Wheelbase | | | | Frame Heights at Base Model Curb Weight | | | | | | | Frame Heights and Angular Dimensions are shown at Maximum GAWR Front/Rear | | | | | | | | | | | | | | | |
|------------------------|------------------------|------------------|------|------|------|---|------|------|------|------|------|------|---|------|------|------|------|------|------|----|----|---|---|----|----|----|----|----|
| GVW/Tire | Base Model Curb Weight | | | GAWR | | HE | HF | HG | HM | HR | HS | HT | HE | HF | HG | HM | HR | HS | HT | A | B | C | D | E | F | G | H | I |
| | Frt | Rr | Ttl | Frt | Rr | | | | | | | | | | | | | | | | | | | | | | | |
| 2) 8600 LT245/75R16 | 2497 | 1334 | 3832 | 3600 | 6000 | 34.4 | 17.0 | 74.2 | 22.2 | 32.6 | 23.3 | 37.3 | 25.8 | 15.5 | 70.7 | 18.6 | 26.1 | 19.8 | 28.6 | 24 | 33 | — | — | 21 | 18 | 23 | 32 | 32 |
| 2) 8600 LT245/75R16 | 2497 | 1334 | 3832 | 4100 | 6000 | 34.4 | 17.0 | 74.2 | 22.2 | 32.6 | 23.3 | 37.3 | 25.8 | 14.1 | 70.7 | 18.1 | 26.1 | 19.2 | 28.6 | 23 | 31 | — | — | 21 | 18 | 23 | 32 | 32 |

NOTE: Front coil springs, torsion bars and adjusters are computer selected based on model options and calculated sprung curb weight. Actual heights may vary due to production tolerances.

- 1) Base vehicle
- 2) Optional GVWR—contain minimum equipment required

FRAME HEIGHTS AND RAMP ANGLE DATA

| C 20906 | | 131.5" Wheelbase | | | | Frame Heights at Base Model Curb Weight | | | | | | | Frame Heights and Angular Dimensions are shown at Maximum GAWR Front/Rear | | | | | | | | | | | | | | | | | |
|------------------------|------------------------|------------------|------|------|------|---|------|------|------|------|------|------|---|------|------|------|------|------|------|------|------|----|----|---|----|---|----|----|----|---|
| GVW/Tire | Base Model Curb Weight | | | GAWR | | HF | HG | HM | HP | HR | HS | HS2 | HT | HF | HG | HM | HP | HR | HS | HS2 | HT | A | B | C | D | E | F | G | H | I |
| | Frt | Rr | Ttl | Frt | Rr | | | | | | | | | | | | | | | | | | | | | | | | | |
| 1) 8600 LT245/75R16 | 2568 | 2705 | 5273 | 3600 | 6084 | 17.7 | 73.6 | 20.7 | 35.5 | 28.9 | 21.9 | 22.5 | 31.4 | 15.7 | 71.0 | 18.4 | 30.7 | 25.6 | 19.6 | 20.3 | 27.2 | 22 | 33 | — | 20 | — | 16 | 21 | 27 | — |
| 2) 8600 LT245/75R16 | 2568 | 2705 | 5273 | 4100 | 6084 | 17.8 | 73.6 | 20.8 | 35.5 | 28.9 | 21.9 | 22.5 | 31.4 | 14.4 | 71.6 | 18.0 | 30.7 | 25.6 | 19.1 | 20.3 | 27.2 | 21 | 31 | — | 20 | — | 16 | 21 | 27 | — |

| C 20953 | | 155.5" Wheelbase | | | | Frame Heights at Base Model Curb Weight | | | | | | | Frame Heights and Angular Dimensions are shown at Maximum GAWR Front/Rear | | | | | | | | | | | | | | | |
|------------------------|------------------------|------------------|------|------|------|---|------|------|------|------|------|------|---|------|------|------|------|------|------|----|----|---|---|----|----|----|----|----|
| GVW/Tire | Base Model Curb Weight | | | GAWR | | HE | HF | HG | HM | HR | HS | HT | HE | HF | HG | HM | HR | HS | HT | A | B | C | D | E | F | G | H | I |
| | Frt | Rr | Ttl | Frt | Rr | | | | | | | | | | | | | | | | | | | | | | | |
| 1) 8600 LT245/75R16 | 2828 | 2060 | 4889 | 3600 | 6000 | 32.2 | 17.3 | 73.2 | 21.3 | 31.1 | 22.4 | 35.0 | 25.7 | 16.4 | 71.1 | 18.9 | 26.0 | 20.1 | 28.5 | 20 | 35 | — | — | 21 | 18 | 23 | 33 | 32 |
| 2) 8600 LT245/75R16 | 2828 | 2060 | 4889 | 4100 | 6000 | 32.2 | 17.3 | 73.2 | 21.3 | 31.1 | 22.4 | 35.0 | 25.7 | 15.1 | 71.1 | 18.4 | 26.0 | 19.5 | 28.5 | 20 | 32 | — | — | 21 | 18 | 23 | 33 | 32 |

| K 20743 | | 154.5" Wheelbase | | | | Frame Heights at Base Model Curb Weight | | | | | | | Frame Heights and Angular Dimensions are shown at Maximum GAWR Front/Rear | | | | | | | | | | | | | | | | | |
|------------------------|------------------------|------------------|------|------|------|---|------|------|------|------|------|------|---|------|------|------|------|------|------|------|------|----|----|---|---|----|----|----|----|----|
| GVW/Tire | Base Model Curb Weight | | | GAWR | | HE | HF | HG | HM | HR | HS | HS2 | HT | HE | HF | HG | HM | HR | HS | HS2 | HT | A | B | C | D | E | F | G | H | I |
| | Frt | Rr | Ttl | Frt | Rr | | | | | | | | | | | | | | | | | | | | | | | | | |
| 1) 8600 LT245/75R16 | 3365 | 2265 | 5631 | 4060 | 5530 | 32.0 | 18.7 | 74.8 | 21.0 | 31.3 | 23.2 | 24.0 | 34.6 | 26.5 | 18.1 | 72.1 | 19.2 | 26.9 | 21.4 | 21.7 | 29.0 | 19 | 38 | — | — | 24 | 18 | 26 | 28 | 36 |
| 2) 8600 LT245/75R16 | 3639 | 2233 | 5872 | 4250 | 5530 | 32.1 | 18.7 | 74.8 | 21.0 | 31.4 | 23.2 | 24.1 | 34.7 | 26.4 | 18.2 | 72.2 | 19.3 | 26.9 | 21.5 | 21.8 | 28.9 | 19 | 38 | — | — | 24 | 18 | 25 | 28 | 35 |

NOTE: Front coil springs, torsion bars and adjusters are computer selected based on model options and calculated sprung curb weight. Actual heights may vary due to production tolerances.

- 1) Base vehicle
- 2) Optional GVWR—contain minimum equipment required

FRAME HEIGHTS AND RAMP ANGLE DATA

| K 20753 | | 141.5" Wheelbase | | | | | Frame Heights at Base Model Curb Weight | | | | | | Frame Heights and Angular Dimensions are shown at Maximum GAWR Front/Rear | | | | | | | | | | | | | | | |
|------------------------|------------------------|------------------|------|------|------|------|---|------|------|------|------|------|---|------|------|------|------|------|------|----|----|---|---|----|----|----|----|----|
| GVW/Tire | Base Model Curb Weight | | | GAWR | | HE | HF | HG | HM | HR | HS | HT | HE | HF | HG | HM | HR | HS | HT | A | B | C | D | E | F | G | H | I |
| | Frt | Rr | Ttl | Frt | Rr | | | | | | | | | | | | | | | | | | | | | | | |
| 1) 8600 LT245/75R16 | 3091 | 2119 | 5210 | 4250 | 6000 | 32.3 | 18.7 | 74.3 | 21.1 | 31.5 | 23.5 | 35.2 | 25.7 | 16.9 | 72.0 | 18.4 | 26.4 | 20.9 | 28.5 | 20 | 36 | — | — | 20 | 19 | 25 | 30 | 35 |
| 2) 8600 LT245/75R16 | 3091 | 2119 | 5210 | 4500 | 6000 | 32.3 | 18.8 | 74.3 | 21.1 | 31.5 | 23.6 | 35.2 | 25.7 | 16.3 | 72.1 | 18.2 | 26.4 | 20.7 | 28.5 | 20 | 35 | — | — | 20 | 19 | 25 | 30 | 35 |

| K 20903 | | 131.5" Wheelbase | | | | | Frame Heights at Base Model Curb Weight | | | | | | Frame Heights and Angular Dimensions are shown at Maximum GAWR Front/Rear | | | | | | | | | | | | | | | |
|------------------------|------------------------|------------------|------|------|------|------|---|------|------|------|------|------|---|------|------|------|------|------|------|----|----|---|---|----|----|----|----|----|
| GVW/Tire | Base Model Curb Weight | | | GAWR | | HE | HF | HG | HM | HR | HS | HT | HE | HF | HG | HM | HR | HS | HT | A | B | C | D | E | F | G | H | I |
| | Frt | Rr | Ttl | Frt | Rr | | | | | | | | | | | | | | | | | | | | | | | |
| 1) 8600 LT245/75R16 | 3060 | 1651 | 4711 | 4250 | 6000 | 33.7 | 18.5 | 74.5 | 21.5 | 32.4 | 23.9 | 36.5 | 25.6 | 16.8 | 72.0 | 18.4 | 26.4 | 20.9 | 28.4 | 21 | 35 | — | — | 21 | 18 | 23 | 32 | 32 |
| 2) 8600 LT245/75R16 | 3060 | 1651 | 4711 | 4500 | 6000 | 33.7 | 18.5 | 74.6 | 21.5 | 32.4 | 24.0 | 36.5 | 25.6 | 16.3 | 72.0 | 18.2 | 26.4 | 20.7 | 28.4 | 21 | 34 | — | — | 21 | 18 | 23 | 32 | 32 |

| K 20906 | | 131.5" Wheelbase | | | | | Frame Heights at Base Model Curb Weight | | | | | | Frame Heights and Angular Dimensions are shown at Maximum GAWR Front/Rear | | | | | | | | | | | | | | | | | |
|------------------------|------------------------|------------------|------|------|------|------|---|------|------|------|------|------|---|------|------|------|------|------|------|------|------|----|----|---|----|---|----|----|----|---|
| GVW/Tire | Base Model Curb Weight | | | GAWR | | HF | HG | HM | HP | HR | HS | HS2 | HT | HF | HG | HM | HP | HR | HS | HS2 | HT | A | B | C | D | E | F | G | H | I |
| | Frt | Rr | Ttl | Frt | Rr | | | | | | | | | | | | | | | | | | | | | | | | | |
| 1) 8600 LT245/75R16 | 2911 | 2826 | 5737 | 4250 | 6000 | 19.4 | 73.5 | 20.2 | 34.7 | 28.7 | 22.7 | 22.8 | 31.7 | 16.6 | 71.6 | 17.9 | 29.9 | 25.6 | 20.4 | 20.9 | 27.4 | 21 | 35 | — | 19 | — | 14 | 19 | 25 | — |
| 2) 8600 LT245/75R16 | 2911 | 2826 | 5737 | 4500 | 6000 | 19.4 | 73.5 | 20.3 | 34.7 | 28.7 | 22.7 | 22.8 | 31.7 | 16.2 | 71.9 | 17.8 | 29.9 | 25.6 | 20.3 | 20.9 | 27.4 | 20 | 34 | — | 19 | — | 14 | 19 | 25 | — |

NOTE: Front coil springs, torsion bars and adjusters are computer selected based on model options and calculated sprung curb weight. Actual heights may vary due to production tolerances.

- 1) Base vehicle
- 2) Optional GVWR—contain minimum equipment required

FRAME HEIGHTS AND RAMP ANGLE DATA

| K 20953 | | 155.5" Wheelbase | | | Frame Heights at Base Model Curb Weight | | | | | | | | Frame Heights and Angular Dimensions are shown at Maximum GAWR Front/Rear | | | | | | | | | | | | | | | |
|------------------------|------------------------|------------------|------|------|---|------|------|------|------|------|------|------|---|------|------|------|------|------|------|----|----|---|---|----|----|----|----|----|
| GVW/Tire | Base Model Curb Weight | | | GAWR | | HE | HF | HG | HM | HR | HS | HT | HE | HF | HG | HM | HR | HS | HT | A | B | C | D | E | F | G | H | I |
| | Frnt | Rr | Ttl | Frnt | Rr | | | | | | | | | | | | | | | | | | | | | | | |
| 1) 8600 LT245/75R16 | 3255 | 2174 | 5430 | 4250 | 6000 | 32.1 | 18.8 | 74.0 | 20.9 | 31.2 | 23.3 | 34.9 | 25.6 | 17.7 | 72.2 | 18.8 | 26.4 | 21.2 | 28.4 | 18 | 37 | — | — | 20 | 17 | 22 | 30 | 31 |
| 1) 8600 LT245/75R16 | 3255 | 2174 | 5430 | 4500 | 6000 | 32.0 | 18.8 | 74.0 | 20.9 | 31.2 | 23.4 | 34.9 | 25.6 | 17.7 | 72.2 | 18.8 | 26.4 | 21.3 | 28.4 | 18 | 37 | — | — | 20 | 17 | 22 | 30 | 31 |

| C 30743 | | 154.5" Wheelbase | | | Frame Heights at Base Model Curb Weight | | | | | | | | Frame Heights and Angular Dimensions are shown at Maximum GAWR Front/Rear | | | | | | | | | | | | | | | | | |
|------------------------|------------------------|------------------|------|------|---|------|------|------|------|------|------|------|---|------|------|------|------|------|------|------|------|----|----|---|---|----|----|----|----|----|
| GVW/Tire | Base Model Curb Weight | | | GAWR | | HE | HF | HG | HM | HR | HS | HS2 | HT | HE | HF | HG | HM | HR | HS | HS2 | HT | A | B | C | D | E | F | G | H | I |
| | Frnt | Rr | Ttl | Frnt | Rr | | | | | | | | | | | | | | | | | | | | | | | | | |
| 1) 9400 LT215/85R16 | 3231 | 2563 | 5795 | 3950 | 6350 | 31.1 | 17.3 | 74.0 | 21.3 | 30.2 | 22.2 | 23.3 | 34.3 | 25.4 | 16.5 | 71.2 | 19.3 | 25.6 | 20.2 | 20.7 | 28.6 | 19 | 35 | — | — | 23 | 17 | 25 | 26 | 35 |
| 2) 9400 LT225/75R16 | 3231 | 2563 | 5795 | 3950 | 6350 | 30.5 | 16.8 | 73.5 | 20.8 | 29.6 | 21.7 | 22.7 | 33.8 | 24.8 | 16.1 | 70.7 | 18.8 | 25.1 | 19.7 | 20.2 | 28.0 | 18 | 34 | — | — | 23 | 16 | 24 | 25 | 34 |

| C 30903 | | 131.5" Wheelbase | | | Frame Heights at Base Model Curb Weight | | | | | | | | Frame Heights and Angular Dimensions are shown at Maximum GAWR Front/Rear | | | | | | | | | | | | | | | |
|--------------------------|------------------------|------------------|------|------|---|------|------|------|------|------|------|------|---|------|------|------|------|------|------|----|----|---|---|----|----|----|----|----|
| GVW/Tire | Base Model Curb Weight | | | GAWR | | HE | HF | HG | HM | HR | HS | HT | HE | HF | HG | HM | HR | HS | HT | A | B | C | D | E | F | G | H | I |
| | Frnt | Rr | Ttl | Frnt | Rr | | | | | | | | | | | | | | | | | | | | | | | |
| 1) 9000 LT245/75R16 | 2679 | 1696 | 4376 | 3600 | 6084 | 33.6 | 17.3 | 73.9 | 22.0 | 32.0 | 23.1 | 36.5 | 25.8 | 16.4 | 70.6 | 18.9 | 26.0 | 20.1 | 28.6 | 22 | 35 | — | — | 20 | 18 | 23 | 30 | 31 |
| 2) 9000 LT245/75R16 | 2679 | 1696 | 4376 | 4100 | 6084 | 33.6 | 17.3 | 73.9 | 22.0 | 32.0 | 23.2 | 36.4 | 25.7 | 15.2 | 70.6 | 18.5 | 26.0 | 19.7 | 28.5 | 22 | 32 | — | — | 20 | 18 | 23 | 30 | 31 |
| 2) 10,000 LT215/85R16 | 2686 | 1916 | 4602 | 3600 | 7500 | 34.1 | 17.1 | 74.1 | 22.1 | 32.4 | 23.3 | 37.0 | 26.4 | 16.2 | 71.3 | 19.2 | 26.7 | 20.3 | 29.2 | 23 | 34 | — | — | 21 | 18 | 23 | 31 | 31 |
| 2) 10,000 LT225/75R16 | 2686 | 1916 | 4602 | 3600 | 7500 | 33.6 | 16.6 | 73.6 | 21.6 | 31.9 | 22.8 | 36.5 | 25.8 | 15.7 | 70.8 | 18.7 | 26.1 | 19.8 | 28.6 | 22 | 33 | — | — | 20 | 17 | 22 | 30 | 31 |
| 2) 10,000 LT215/85R16 | 2686 | 1916 | 4602 | 4100 | 7500 | 34.1 | 17.3 | 74.1 | 22.2 | 32.4 | 23.4 | 37.0 | 26.4 | 15.2 | 71.4 | 18.8 | 26.7 | 19.9 | 29.2 | 22 | 32 | — | — | 21 | 18 | 23 | 31 | 31 |
| 2) 10,000 LT225/75R16 | 2686 | 1916 | 4602 | 4100 | 7500 | 33.6 | 16.7 | 73.6 | 21.7 | 31.9 | 22.8 | 36.5 | 25.8 | 14.5 | 70.8 | 18.2 | 26.1 | 19.3 | 28.6 | 21 | 31 | — | — | 20 | 17 | 22 | 30 | 31 |

NOTE: Front coil springs, torsion bars and adjusters are computer selected based on model options and calculated sprung curb weight. Actual heights may vary due to production tolerances.

- 1) Base vehicle
- 2) Optional GVWR—contain minimum equipment required

FRAME HEIGHTS AND RAMP ANGLE DATA

| C 30943 | | 168.5" Wheelbase | | | | Frame Heights at Base Model Curb Weight | | | | | | | Frame Heights and Angular Dimensions are shown at Maximum GAWR Front/Rear | | | | | | | | | | | | | | | | | |
|--------------------------|------------------------|------------------|------|------|------|---|------|------|------|------|------|------|---|------|------|------|------|------|------|------|------|----|----|---|---|----|----|----|----|----|
| GVW/Tire | Base Model Curb Weight | | | GAWR | | HE | HF | HG | HM | HR | HS | HS2 | HT | HE | HF | HG | HM | HR | HS | HS2 | HT | A | B | C | D | E | F | G | H | I |
| | Frt | Rr | Ttl | Frt | Rr | | | | | | | | | | | | | | | | | | | | | | | | | |
| 1) 9000 LT245/75R16 | 2978 | 2052 | 5030 | 4100 | 6084 | 32.3 | 17.6 | 74.4 | 21.4 | 31.3 | 22.6 | 23.6 | 35.2 | 25.7 | 16.1 | 71.3 | 18.8 | 26.0 | 20.0 | 20.8 | 28.5 | 17 | 34 | — | — | 20 | 17 | 22 | 30 | 31 |
| 2) 9600 LT245/75R16 | 3025 | 2114 | 5140 | 4100 | 6084 | 32.2 | 17.6 | 74.3 | 21.4 | 31.2 | 22.5 | 23.5 | 35.1 | 25.9 | 16.2 | 70.9 | 18.7 | 26.0 | 19.8 | 20.4 | 28.7 | 17 | 34 | — | — | 21 | 18 | 23 | 30 | 31 |
| 2) 10,000 LT215/85R16 | 2986 | 2251 | 5237 | 4100 | 7500 | 33.0 | 17.6 | 74.8 | 21.6 | 31.9 | 22.8 | 23.9 | 35.9 | 26.4 | 16.1 | 72.0 | 19.0 | 26.7 | 20.2 | 21.6 | 29.2 | 18 | 34 | — | — | 21 | 18 | 23 | 31 | 31 |
| 2) 10,000 LT225/75R16 | 2986 | 2251 | 5237 | 4100 | 7500 | 32.5 | 17.0 | 74.2 | 21.0 | 31.3 | 22.2 | 23.4 | 35.4 | 25.8 | 15.5 | 71.4 | 18.4 | 26.1 | 19.6 | 21.0 | 28.6 | 17 | 33 | — | — | 20 | 17 | 22 | 30 | 31 |

| C 30953 | | 155.5" Wheelbase | | | | Frame Heights at Base Model Curb Weight | | | | | | | Frame Heights and Angular Dimensions are shown at Maximum GAWR Front/Rear | | | | | | | | | | | | | | | |
|--------------------------|------------------------|------------------|------|------|------|---|------|------|------|------|------|------|---|------|------|------|------|------|------|----|----|---|---|----|----|----|----|----|
| GVW/Tire | Base Model Curb Weight | | | GAWR | | HE | HF | HG | HM | HR | HS | HT | HE | HF | HG | HM | HR | HS | HT | A | B | C | D | E | F | G | H | I |
| | Frt | Rr | Ttl | Frt | Rr | | | | | | | | | | | | | | | | | | | | | | | |
| 1) 10,000 LT215/85R16 | 2893 | 2519 | 5412 | 3600 | 7500 | 32.5 | 17.2 | 73.3 | 21.3 | 31.3 | 22.4 | 35.4 | 26.4 | 16.3 | 71.5 | 19.1 | 26.7 | 20.3 | 29.2 | 19 | 34 | — | — | 23 | 18 | 23 | 31 | 31 |
| 2) 10,000 LT225/75R16 | 2893 | 2519 | 5412 | 3600 | 7500 | 32.0 | 16.6 | 72.8 | 20.8 | 30.8 | 21.9 | 34.9 | 25.9 | 15.8 | 71.0 | 18.6 | 26.1 | 19.7 | 28.7 | 18 | 33 | — | — | 22 | 17 | 22 | 30 | 31 |
| 2) 10,000 LT215/85R16 | 2893 | 2519 | 5412 | 4100 | 7500 | 32.5 | 17.3 | 73.3 | 21.4 | 31.3 | 22.5 | 35.4 | 26.4 | 15.3 | 71.6 | 18.6 | 26.7 | 19.8 | 29.2 | 19 | 32 | — | — | 23 | 18 | 23 | 31 | 31 |
| 2) 10,000 LT225/75R16 | 2893 | 2519 | 5412 | 4100 | 7500 | 32.0 | 16.7 | 72.8 | 20.8 | 30.8 | 21.9 | 34.8 | 25.8 | 14.7 | 71.0 | 18.0 | 26.1 | 19.2 | 28.6 | 18 | 31 | — | — | 22 | 17 | 22 | 30 | 31 |

NOTE: Front coil springs, torsion bars and adjusters are computer selected based on model options and calculated sprung curb weight. Actual heights may vary due to production tolerances.

- 1) Base vehicle
- 2) Optional GVWR—contain minimum equipment required

FRAME HEIGHTS AND RAMP ANGLE DATA

| C 31003 | | 135.5" Wheelbase | | | | Frame Heights at Base Model Curb Weight | | | | | | | Frame Heights and Angular Dimensions are shown at Maximum GAWR Front/Rear | | | | | | | | | | | | | | | |
|--------------------------|------------------------|------------------|------|------|-------|---|------|------|------|------|------|----|---|------|------|------|------|------|----|----|----|---|----|---|---|---|----|----|
| GVW/Tire | Base Model Curb Weight | | | GAWR | | HE | HF | HG | HM | HR | HS | HT | HE | HF | HG | HM | HR | HS | HT | A | B | C | D | E | F | G | H | I |
| | Frt | Rr | Ttl | Frt | Rr | | | | | | | | | | | | | | | | | | | | | | | |
| 1) 10,000 LT245/75R16 | 2787 | 1966 | 4754 | 3600 | 6084 | 32.8 | 17.3 | 73.3 | 21.6 | 31.2 | 22.7 | — | 25.6 | 16.4 | 70.6 | 18.9 | 25.9 | 20.0 | — | 22 | 35 | — | 31 | — | — | — | 27 | 24 |
| 2) 9000 LT245/75R16 | 2787 | 1966 | 4754 | 4100 | 6084 | 32.8 | 17.4 | 73.3 | 21.6 | 31.2 | 22.8 | — | 25.5 | 15.3 | 70.6 | 18.5 | 25.9 | 19.6 | — | 21 | 33 | — | 31 | — | — | — | 27 | 24 |
| 2) 9000 LT215/85R16 | 2803 | 2142 | 4945 | 4100 | 7500 | 33.6 | 17.2 | 73.6 | 21.8 | 31.8 | 23.0 | — | 26.2 | 15.2 | 71.4 | 18.7 | 26.6 | 19.8 | — | 21 | 32 | — | 32 | — | — | — | 28 | 24 |
| 2) 10,000 LT225/75R16 | 2803 | 2142 | 4945 | 4100 | 7500 | 33.1 | 16.7 | 73.1 | 21.3 | 31.3 | 22.4 | — | 25.7 | 14.7 | 70.8 | 18.2 | 26.1 | 19.3 | — | 21 | 31 | — | 31 | — | — | — | 27 | 24 |
| 2) 11,000 LT215/85R16 | 2805 | 2174 | 4980 | 4100 | 8250 | 33.0 | 17.3 | 73.4 | 21.7 | 31.4 | 22.8 | — | 26.3 | 15.2 | 71.1 | 18.6 | 26.5 | 19.7 | — | 21 | 33 | — | 32 | — | — | — | 28 | 24 |
| 2) 11,000 LT225/75R16 | 2805 | 2174 | 4980 | 4100 | 8250 | 32.5 | 16.8 | 72.9 | 21.1 | 30.8 | 22.3 | — | 25.8 | 14.7 | 70.6 | 18.1 | 26.0 | 19.2 | — | 20 | 31 | — | 31 | — | — | — | 27 | 24 |
| 2) 15,000 225/70R19.5 | 3254 | 2324 | 5579 | 5000 | 11000 | 33.0 | 18.3 | 77.9 | 25.2 | 32.0 | 27.6 | — | 28.3 | 16.8 | 75.8 | 22.9 | 28.4 | 25.3 | — | 22 | 31 | — | 35 | — | — | — | 39 | 24 |

NOTE: Front coil springs, torsion bars and adjusters are computer selected based on model options and calculated sprung curb weight. Actual heights may vary due to production tolerances.

- 1) Base vehicle
- 2) Optional GVWR—contain minimum equipment required

FRAME HEIGHTS AND RAMP ANGLE DATA

| C 31403 | | 159.5" Wheelbase | | | | Frame Heights at Base Model Curb Weight | | | | | | | Frame Heights and Angular Dimensions are shown at Maximum GAWR Front/Rear | | | | | | | | | | | | | | | |
|--------------------------|------------------------|------------------|------|------|-------|---|------|------|------|------|------|----|---|------|------|------|------|------|----|----|----|---|----|---|---|---|----|----|
| GVW/Tire | Base Model Curb Weight | | | GAWR | | HE | HF | HG | HM | HR | HS | HT | HE | HF | HG | HM | HR | HS | HT | A | B | C | D | E | F | G | H | I |
| | Frt | Rr | Ttl | Frt | Rr | | | | | | | | | | | | | | | | | | | | | | | |
| 1) 10,000 LT245/75R16 | 3055 | 1993 | 5049 | 3600 | 6084 | 33.1 | 17.3 | 73.2 | 21.5 | 31.7 | 22.6 | — | 25.7 | 17.1 | 71.0 | 19.3 | 26.1 | 20.5 | — | 20 | 36 | — | 32 | — | — | — | 27 | 24 |
| 2) 9000 LT245/75R16 | 3055 | 1993 | 5049 | 4100 | 6084 | 33.1 | 17.3 | 73.2 | 21.5 | 31.7 | 22.6 | — | 25.7 | 16.0 | 71.0 | 18.8 | 26.1 | 20.0 | — | 19 | 34 | — | 32 | — | — | — | 27 | 24 |
| 2) 9000 LT215/85R16 | 3071 | 2169 | 5240 | 4100 | 7500 | 33.3 | 17.4 | 73.3 | 21.6 | 31.8 | 22.7 | — | 26.2 | 16.1 | 71.7 | 19.0 | 26.6 | 20.2 | — | 19 | 34 | — | 32 | — | — | — | 28 | 24 |
| 2) 10,000 LT225/75R16 | 3071 | 2169 | 5240 | 4100 | 7500 | 32.8 | 16.9 | 72.7 | 21.1 | 31.3 | 22.2 | — | 25.6 | 15.6 | 71.2 | 18.5 | 26.1 | 19.6 | — | 18 | 33 | — | 31 | — | — | — | 27 | 23 |
| 2) 11,000 LT215/85R16 | 3074 | 2201 | 5275 | 4100 | 8250 | 32.7 | 17.5 | 73.1 | 21.4 | 31.4 | 22.6 | — | 26.2 | 16.1 | 71.4 | 18.9 | 26.5 | 20.1 | — | 19 | 34 | — | 32 | — | — | — | 28 | 24 |
| 2) 11,000 LT225/75R16 | 3074 | 2201 | 5275 | 4100 | 8250 | 32.2 | 17.0 | 72.6 | 20.9 | 30.8 | 22.1 | — | 25.7 | 15.6 | 70.9 | 18.4 | 26.0 | 19.6 | — | 18 | 33 | — | 31 | — | — | — | 27 | 24 |
| 2) 15,000 225/70R19.5 | 3847 | 2606 | 6453 | 5000 | 11000 | 32.6 | 17.7 | 77.3 | 24.6 | 31.6 | 27.0 | — | 28.1 | 16.9 | 75.9 | 22.9 | 28.2 | 25.3 | — | 19 | 31 | — | 35 | — | — | — | 39 | 24 |

| C 31803 | | 183.5" Wheelbase | | | | Frame Heights at Base Model Curb Weight | | | | | | | Frame Heights and Angular Dimensions are shown at Maximum GAWR Front/Rear | | | | | | | | | | | | | | | |
|--------------------------|------------------------|------------------|------|------|-------|---|------|------|------|------|------|----|---|------|------|------|------|------|----|----|----|---|----|---|---|---|----|----|
| GVW/Tire | Base Model Curb Weight | | | GAWR | | HE | HF | HG | HM | HR | HS | HT | HE | HF | HG | HM | HR | HS | HT | A | B | C | D | E | F | G | H | I |
| | Frt | Rr | Ttl | Frt | Rr | | | | | | | | | | | | | | | | | | | | | | | |
| 1) 15,000 225/70R19.5 | 3740 | 2619 | 6360 | 5000 | 11000 | 32.4 | 17.9 | 77.2 | 24.6 | 31.6 | 27.0 | — | 28.1 | 16.9 | 75.9 | 22.8 | 28.2 | 25.2 | — | 17 | 31 | — | 35 | — | — | — | 41 | 24 |

NOTE: Front coil springs, torsion bars and adjusters are computer selected based on model options and calculated sprung curb weight. Actual heights may vary due to production tolerances.

- 1) Base vehicle
- 2) Optional GVWR—contain minimum equipment required

FRAME HEIGHTS AND RAMP ANGLE DATA

| K 30743 | | 154.5" Wheelbase | | | | Frame Heights at Base Model Curb Weight | | | | | | | Frame Heights and Angular Dimensions are shown at Maximum GAWR Front/Rear | | | | | | | | | | | | | | | | | |
|------------------------|------------------------|------------------|------|------|------|---|------|------|------|------|------|------|---|------|------|------|------|------|------|------|------|----|----|---|---|----|----|----|----|----|
| GVW/Tire | Base Model Curb Weight | | | GAWR | | HE | HF | HG | HM | HR | HS | HS2 | HT | HE | HF | HG | HM | HR | HS | HS2 | HT | A | B | C | D | E | F | G | H | I |
| | Frt | Rr | Ttl | Frt | Rr | | | | | | | | | | | | | | | | | | | | | | | | | |
| 1) 9400 LT215/85R16 | 3686 | 2555 | 6242 | 4500 | 6100 | 32.2 | 18.8 | 74.9 | 21.1 | 31.4 | 23.3 | 24.1 | 34.7 | 26.4 | 18.0 | 72.1 | 19.2 | 26.9 | 21.4 | 21.7 | 28.9 | 18 | 37 | — | — | 24 | 17 | 25 | 27 | 35 |
| 2) 9400 LT225/75R16 | 3686 | 2555 | 6242 | 4500 | 6100 | 32.3 | 18.2 | 74.7 | 20.7 | 31.4 | 22.9 | 23.9 | 34.8 | 26.6 | 17.4 | 72.0 | 18.8 | 26.9 | 21.0 | 21.5 | 29.1 | 17 | 36 | — | — | 23 | 17 | 25 | 26 | 34 |

| K 30903 | | 131.5" Wheelbase | | | | Frame Heights at Base Model Curb Weight | | | | | | | Frame Heights and Angular Dimensions are shown at Maximum GAWR Front/Rear | | | | | | | | | | | | | | | |
|--------------------------|------------------------|------------------|------|------|------|---|------|------|------|------|------|------|---|------|------|------|------|------|------|----|----|---|---|----|----|----|----|----|
| GVW/Tire | Base Model Curb Weight | | | GAWR | | HE | HF | HG | HM | HR | HS | HT | HE | HF | HG | HM | HR | HS | HT | A | B | C | D | E | F | G | H | I |
| | Frt | Rr | Ttl | Frt | Rr | | | | | | | | | | | | | | | | | | | | | | | |
| 1) 9200 LT245/75R16 | 2993 | 1777 | 4770 | 4250 | 6084 | 33.6 | 18.6 | 74.6 | 21.5 | 32.3 | 24.0 | 36.4 | 25.9 | 16.8 | 71.5 | 18.3 | 26.4 | 20.7 | 28.7 | 21 | 35 | — | — | 21 | 18 | 23 | 30 | 31 |
| 2) 9200 LT245/75R16 | 2993 | 1777 | 4770 | 4500 | 6084 | 33.6 | 18.6 | 74.5 | 21.5 | 32.3 | 24.0 | 36.5 | 25.9 | 16.2 | 71.5 | 18.1 | 26.4 | 20.5 | 28.7 | 21 | 34 | — | — | 21 | 18 | 23 | 30 | 31 |
| 2) 10,000 LT225/75R16 | 3010 | 1983 | 4993 | 4250 | 7500 | 32.9 | 18.0 | 73.9 | 20.9 | 31.7 | 23.4 | 35.8 | 25.0 | 16.3 | 71.5 | 17.7 | 25.9 | 20.1 | 27.8 | 20 | 34 | — | — | 19 | 16 | 21 | 28 | 30 |
| 2) 10,000 LT215/85R16 | 3010 | 1983 | 4993 | 4250 | 7500 | 33.4 | 18.6 | 74.5 | 21.5 | 32.2 | 23.9 | 36.3 | 25.6 | 16.8 | 72.0 | 18.2 | 26.4 | 20.7 | 28.3 | 21 | 35 | — | — | 20 | 17 | 22 | 30 | 30 |
| 2) 10,000 LT225/75R16 | 3010 | 1983 | 4993 | 4500 | 7500 | 32.9 | 18.1 | 74.0 | 21.0 | 31.7 | 23.4 | 35.8 | 25.0 | 15.8 | 71.5 | 17.5 | 25.9 | 20.0 | 27.7 | 19 | 33 | — | — | 19 | 16 | 21 | 28 | 30 |
| 2) 10,000 LT215/85R16 | 3010 | 1983 | 4993 | 4500 | 7500 | 33.4 | 18.6 | 74.5 | 21.5 | 32.2 | 23.9 | 36.3 | 25.6 | 16.3 | 72.0 | 18.0 | 26.4 | 20.5 | 28.3 | 20 | 34 | — | — | 20 | 17 | 22 | 30 | 30 |

NOTE: Front coil springs, torsion bars and adjusters are computer selected based on model options and calculated sprung curb weight. Actual heights may vary due to production tolerances.

- 1) Base vehicle
- 2) Optional GVWR—contain minimum equipment required

FRAME HEIGHTS AND RAMP ANGLE DATA

| K 30943 | | 168.5" Wheelbase | | | | Frame Heights at Base Model Curb Weight | | | | | | | Frame Heights and Angular Dimensions are shown at Maximum GAWR Front/Rear | | | | | | | | | | | | | | | | | |
|--------------------------|------------------------|------------------|------|------|------|---|------|------|------|------|------|------|---|------|------|------|------|------|------|------|------|----|----|---|---|----|----|----|----|----|
| GVW/Tire | Base Model Curb Weight | | | GAWR | | HE | HF | HG | HM | HR | HS | HS2 | HT | HE | HF | HG | HM | HR | HS | HS2 | HT | A | B | C | D | E | F | G | H | I |
| | Frnt | Rr | Ttl | Frnt | Rr | | | | | | | | | | | | | | | | | | | | | | | | | |
| 1) 9200 LT245/75R16 | 3318 | 2121 | 5439 | 4500 | 6084 | 32.4 | 18.8 | 75.0 | 20.9 | 31.6 | 23.4 | 24.2 | 35.2 | 25.8 | 17.4 | 72.0 | 18.5 | 26.4 | 21.0 | 21.6 | 28.6 | 17 | 37 | — | — | 21 | 18 | 23 | 30 | 31 |
| 2) 10,000 LT215/85R16 | 3347 | 2355 | 5703 | 4500 | 7500 | 32.3 | 18.8 | 75.0 | 20.9 | 31.5 | 23.4 | 24.2 | 35.2 | 25.7 | 17.5 | 72.4 | 18.6 | 26.4 | 21.0 | 22.0 | 28.5 | 16 | 37 | — | — | 20 | 17 | 22 | 30 | 30 |
| 2) 10,000 LT225/75R16 | 3347 | 2355 | 5703 | 4500 | 7500 | 31.8 | 18.3 | 74.4 | 20.4 | 31.0 | 22.9 | 23.7 | 34.7 | 25.1 | 17.0 | 71.9 | 18.1 | 25.9 | 20.5 | 21.5 | 27.9 | 16 | 35 | — | — | 19 | 17 | 22 | 29 | 30 |

| K 30953 | | 155.5" Wheelbase | | | | Frame Heights at Base Model Curb Weight | | | | | | | Frame Heights and Angular Dimensions are shown at Maximum GAWR Front/Rear | | | | | | | | | | | | | | | |
|--------------------------|------------------------|------------------|------|------|------|---|------|------|------|------|------|------|---|------|------|------|------|------|------|----|----|---|---|----|----|----|----|----|
| GVW/Tire | Base Model Curb Weight | | | GAWR | | HE | HF | HG | HM | HR | HS | HT | HE | HF | HG | HM | HR | HS | HT | A | B | C | D | E | F | G | H | I |
| | Frnt | Rr | Ttl | Frnt | Rr | | | | | | | | | | | | | | | | | | | | | | | |
| 1) 10,000 LT225/75R16 | 3204 | 2100 | 5305 | 4250 | 7500 | 32.3 | 18.2 | 73.7 | 20.6 | 31.3 | 23.0 | 35.1 | 25.0 | 16.7 | 71.8 | 17.9 | 25.8 | 20.3 | 27.8 | 17 | 35 | — | — | 20 | 16 | 21 | 28 | 30 |
| 2) 10,000 LT215/85R16 | 3204 | 2100 | 5305 | 4250 | 7500 | 32.8 | 18.7 | 74.3 | 21.1 | 31.8 | 23.5 | 35.7 | 25.6 | 17.2 | 72.3 | 18.4 | 26.4 | 20.8 | 28.4 | 18 | 36 | — | — | 21 | 17 | 22 | 30 | 30 |
| 2) 10,000 LT225/75R16 | 3204 | 2100 | 5305 | 4500 | 7500 | 32.3 | 18.2 | 73.8 | 20.6 | 31.3 | 23.1 | 35.1 | 25.0 | 16.2 | 71.8 | 17.6 | 25.8 | 20.0 | 27.8 | 17 | 34 | — | — | 20 | 16 | 21 | 28 | 30 |
| 2) 10,000 LT215/85R16 | 3204 | 2100 | 5305 | 4500 | 7500 | 32.8 | 18.7 | 74.3 | 21.1 | 31.8 | 23.6 | 35.7 | 25.6 | 16.7 | 72.3 | 18.1 | 26.4 | 20.5 | 28.4 | 17 | 35 | — | — | 21 | 17 | 22 | 30 | 30 |

| K 31003 | | 135.5" Wheelbase | | | | Frame Heights at Base Model Curb Weight | | | | | | | Frame Heights and Angular Dimensions are shown at Maximum GAWR Front/Rear | | | | | | | | | | | | | | | |
|--------------------------|------------------------|------------------|------|------|------|---|-------|------|------|------|------|----|---|------|------|------|------|------|----|----|----|---|----|---|---|---|----|----|
| GVW/Tire | Base Model Curb Weight | | | GAWR | | HE | HF | HG | HM | HR | HS | HT | HE | HF | HG | HM | HR | HS | HT | A | B | C | D | E | F | G | H | I |
| | Frnt | Rr | Ttl | Frnt | Rr | | | | | | | | | | | | | | | | | | | | | | | |
| 1) 9200 LT245/75R16 | 3088 | 2304 | 5393 | 4500 | 6084 | 32.0 | 18.9 | 73.8 | 21.0 | 31.0 | 23.4 | — | 25.6 | 16.4 | 71.5 | 18.1 | 26.3 | 20.5 | — | 20 | 35 | — | 31 | — | — | — | 27 | 24 |
| 2) 12,000 LT225/75R16 | 3130 | 2303 | 5434 | 4500 | 8600 | 31.8 | 18.3 | 73.4 | 20.6 | 30.7 | 23.0 | — | 25.3 | 16.0 | 70.8 | 17.3 | 25.8 | 19.8 | — | 19 | 34 | — | 30 | — | — | — | 26 | 23 |
| 2) 12,000 LT215/85R16 | 3130 | 2303 | 5434 | 4500 | 8600 | 32.3 | 18.38 | 73.9 | 21.1 | 31.2 | 23.5 | — | 25.8 | 16.5 | 71.3 | 17.9 | 26.3 | 20.3 | — | 19 | 35 | — | 31 | — | — | — | 27 | 24 |

NOTE: Front coil springs, torsion bars and adjusters are computer selected based on model options and calculated sprung curb weight. Actual heights may vary due to production tolerances.

- 1) Base vehicle
- 2) Optional GVWR—contain minimum equipment required

FRAME HEIGHTS AND RAMP ANGLE DATA

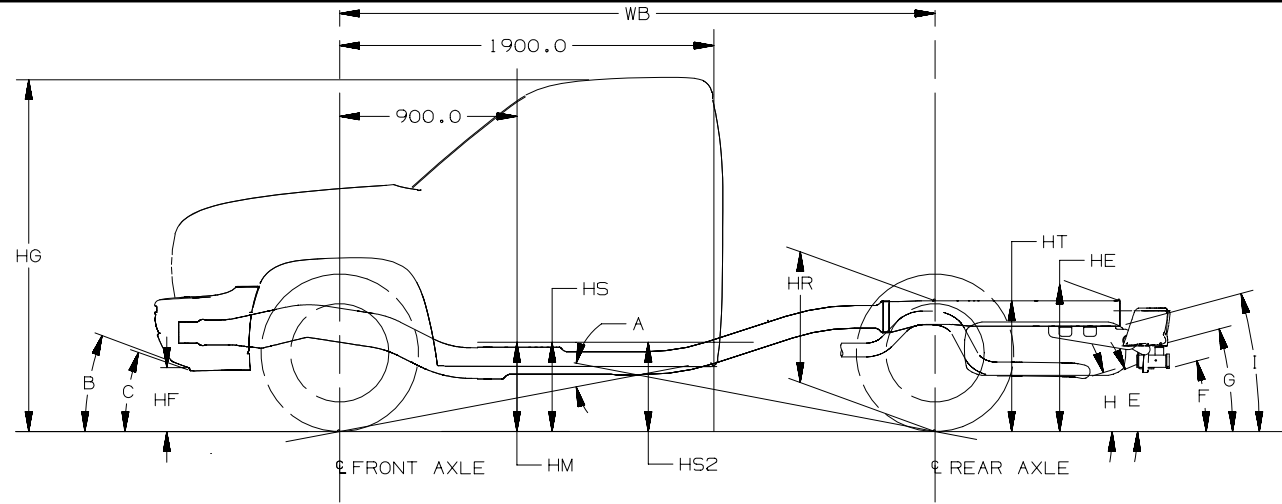
| K 31403 | | 159.5" Wheelbase | | | | Frame Heights at Base Model Curb Weight | | | | | | | Frame Heights and Angular Dimensions are shown at Maximum GAWR Front/Rear | | | | | | | | | | | | | | | |
|--------------------------|------------------------|------------------|------|------|------|---|------|------|------|------|------|----|---|------|------|------|------|------|----|----|----|---|----|---|---|---|----|----|
| GVW/Tire | Base Model Curb Weight | | | GAWR | | HE | HF | HG | HM | HR | HS | HT | HE | HF | HG | HM | HR | HS | HT | A | B | C | D | E | F | G | H | I |
| | Frt | Rr | Ttl | Frt | Rr | | | | | | | | | | | | | | | | | | | | | | | |
| 1) 12,000 LT225/75R16 | 3145 | 2361 | 5507 | 4500 | 8600 | 31.5 | 18.4 | 73.1 | 20.4 | 30.6 | 22.8 | — | 25.4 | 16.1 | 70.9 | 17.3 | 25.8 | 19.7 | — | 16 | 34 | — | 30 | — | — | — | 28 | 23 |
| 2) 12,000 LT215/85R16 | 3145 | 2361 | 5507 | 4500 | 8600 | 32.0 | 18.9 | 73.6 | 20.9 | 31.1 | 23.3 | — | 25.9 | 16.6 | 71.4 | 17.8 | 26.4 | 20.3 | — | 17 | 35 | — | 32 | — | — | — | 29 | 24 |

NOTE: Front coil springs, torsion bars and adjusters are computer selected based on model options and calculated sprung curb weight. Actual heights may vary due to production tolerances.

- 1) Base vehicle
- 2) Optional GVWR—contain minimum equipment required

FRAME HEIGHTS AND RAMP ANGLE DATA

C/K Truck (New)



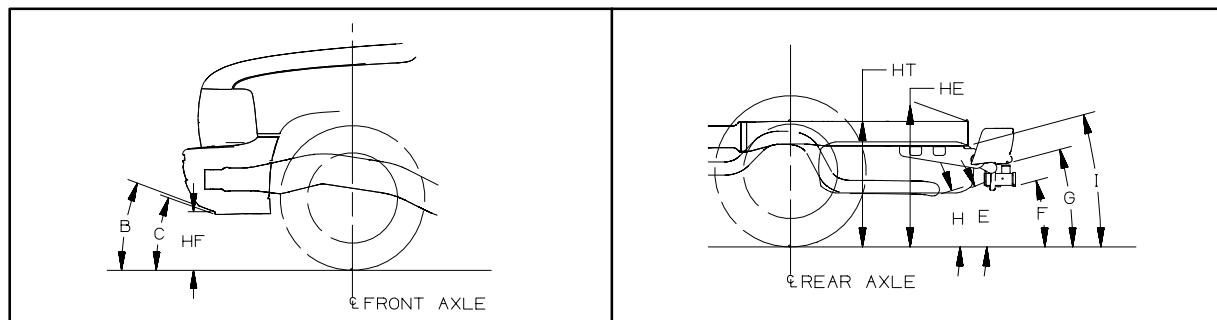
Heights (To Ground)

- HE Top of Frame at End
- HF Bottom of Front Air Deflector or Bumper
- HG Roof height to ground
- HM Top of Frame
- HR Top of Frame at Centerline of Rear Axle
- HS Step H-Point-Front
- HS2 Step H-Point-Second
- HT Rear Cargo Load Height

Angle

- A Ramp Breakover
- Approach Angle(s) (Bottom of)**
- B Front Bumper
 - C Front Air Deflector
- Departure Angles(s) (Bottom of)**
- E Spare Tire
 - F Platform Hitch
 - G Rear Bumper
 - H Exhaust
 - I Frame at End

NOTE: All weights are in pounds, dimensions are in inches and angles are in degrees.



FRAME HEIGHTS AND RAMP ANGLE DATA

| C 15703 | | 119" Wheelbase | | | | Frame Heights at Base Model Curb Weight | | | | | | | Frame Heights and Angular Dimensions are shown at Maximum GAWR Front/Rear | | | | | | | | | | | | | | | |
|-----------------------|------------------------|----------------|------|------|------|---|-----|------|------|------|------|------|---|-----|------|------|------|------|------|----|----|----|---|----|----|----|----|----|
| GVW/Tire | Base Model Curb Weight | | | GAWR | | HE | HF | HG | HM | HR | HS | HT | HE | HF | HG | HM | HR | HS | HT | A | B | C | D | E | F | G | H | I |
| | Frnt | Rr | Ttl | Frnt | Rr | | | | | | | | | | | | | | | | | | | | | | | |
| 1) 6100 P235/75R16 | 2264 | 1526 | 3791 | 3150 | 3750 | 29.6 | 9.8 | 71.4 | 16.6 | 28.5 | 19.9 | 32.3 | 22.4 | 8.6 | 68.1 | 14.0 | 22.9 | 17.3 | 24.8 | 18 | 30 | 21 | — | 18 | 13 | 19 | 17 | 30 |
| 2) 6100 P255/70R16 | 2264 | 1526 | 3791 | 3150 | 3750 | 29.8 | 9.9 | 71.6 | 16.7 | 28.6 | 20.0 | 32.4 | 22.5 | 8.7 | 68.2 | 14.1 | 23.0 | 17.4 | 24.9 | 18 | 30 | 21 | — | 17 | 13 | 19 | 17 | 30 |

| C 15753 | | 143.5" Wheelbase | | | | Frame Heights at Base Model Curb Weight | | | | | | | Frame Heights and Angular Dimensions are shown at Maximum GAWR Front/Rear | | | | | | | | | | | | | | | | | |
|-----------------------|------------------------|------------------|------|------|------|---|------|------|------|------|------|------|---|------|-----|------|------|------|------|------|------|----|----|----|---|----|----|----|----|----|
| GVW/Tire | Base Model Curb Weight | | | GAWR | | HE | HF | HG | HM | HR | HS | HS2 | HT | HE | HF | HG | HM | HR | HS | HS2 | HT | A | B | C | D | E | F | G | H | I |
| | Frnt | Rr | Ttl | Frnt | Rr | | | | | | | | | | | | | | | | | | | | | | | | | |
| 1) 6200 P235/75R16 | 2424 | 1656 | 4081 | 3600 | 3750 | 28.9 | 10.0 | 71.3 | 16.3 | 28.0 | 19.6 | 20.5 | 31.5 | 22.7 | 7.5 | 68.7 | 13.6 | 23.1 | 16.9 | 17.9 | 25.2 | 15 | 28 | 19 | — | 18 | 13 | 20 | 18 | 30 |
| 2) 6200 P255/70R16 | 2424 | 1656 | 4081 | 3600 | 3750 | 29.0 | 10.2 | 71.4 | 16.4 | 28.1 | 19.7 | 20.6 | 31.6 | 22.9 | 7.6 | 68.8 | 13.7 | 23.3 | 17.0 | 18.0 | 25.3 | 15 | 29 | 19 | — | 18 | 13 | 20 | 18 | 30 |

| C 15903 | | 133" Wheelbase | | | | Frame Heights at Base Model Curb Weight | | | | | | | Frame Heights and Angular Dimensions are shown at Maximum GAWR Front/Rear | | | | | | | | | | | | | | | |
|-----------------------|------------------------|----------------|------|------|------|---|-----|------|------|------|------|------|---|-----|------|------|------|------|------|----|----|----|---|----|----|----|----|----|
| GVW/Tire | Base Model Curb Weight | | | GAWR | | HE | HF | HG | HM | HR | HS | HT | HE | HF | HG | HM | HR | HS | HT | A | B | C | D | E | F | G | H | I |
| | Frnt | Rr | Ttl | Frnt | Rr | | | | | | | | | | | | | | | | | | | | | | | |
| 1) 6400 P235/75R16 | 2345 | 1570 | 3915 | 3150 | 3750 | 29.4 | 9.7 | 71.0 | 16.2 | 28.2 | 19.5 | 32.1 | 22.9 | 8.1 | 67.9 | 13.6 | 23.1 | 16.9 | 25.4 | 16 | 29 | 20 | — | 19 | 12 | 18 | 18 | 27 |
| 2) 6400 P255/70R16 | 2345 | 1570 | 3915 | 3150 | 3750 | 29.5 | 9.8 | 71.1 | 16.4 | 28.4 | 19.7 | 32.2 | 23.1 | 8.2 | 68.0 | 13.7 | 23.2 | 17.0 | 25.5 | 16 | 29 | 20 | — | 18 | 12 | 18 | 18 | 27 |

NOTE: Front coil springs, torsion bars and adjusters are computer selected based on model options and calculated sprung curb weight. Actual heights may vary due to production tolerances.

- 1) Base vehicle
- 2) Optional GVWR—contain minimum equipment required

FRAME HEIGHTS AND RAMP ANGLE DATA

| C 15953 | | 157.5" Wheelbase | | | | Frame Heights at Base Model Curb Weight | | | | | | | Frame Heights and Angular Dimensions are shown at Maximum GAWR Front/Rear | | | | | | | | | | | | | | | | | |
|-----------------------|------------------------|------------------|------|------|------|---|------|------|------|------|------|------|---|------|-----|------|------|------|------|------|------|----|----|----|---|----|----|----|----|----|
| GVW/Tire | Base Model Curb Weight | | | GAWR | | HE | HF | HG | HM | HR | HS | HS2 | HT | HE | HF | HG | HM | HR | HS | HS2 | HT | A | B | C | D | E | F | G | H | I |
| | Frnt | Rr | Ttl | Frnt | Rr | | | | | | | | | | | | | | | | | | | | | | | | | |
| 1) 6200 P235/75R16 | 2618 | 1716 | 4335 | 3600 | 3750 | 28.7 | 10.1 | 71.0 | 16.1 | 27.8 | 19.4 | 20.2 | 31.3 | 22.6 | 7.9 | 69.0 | 13.8 | 23.1 | 17.1 | 18.2 | 25.0 | 14 | 29 | 20 | — | 18 | 12 | 18 | 18 | 26 |
| 2) 6200 P255/70R16 | 2618 | 1716 | 4335 | 3600 | 3750 | 28.8 | 10.2 | 71.1 | 16.3 | 28.0 | 19.6 | 20.4 | 31.4 | 22.7 | 8.0 | 69.2 | 13.9 | 23.3 | 17.2 | 18.3 | 25.2 | 14 | 29 | 20 | — | 18 | 12 | 18 | 18 | 26 |

| K 15703 | | 119" Wheelbase | | | | Frame Heights at Base Model Curb Weight | | | | | | | Frame Heights and Angular Dimensions are shown at Maximum GAWR Front/Rear | | | | | | | | | | | | | | | |
|------------------------|------------------------|----------------|------|------|------|---|------|------|------|------|------|------|---|-----|------|------|------|------|------|----|----|----|---|----|----|----|----|----|
| GVW/Tire | Base Model Curb Weight | | | GAWR | | HE | HF | HG | HM | HR | HS | HT | HE | HF | HG | HM | HR | HS | HT | A | B | C | D | E | F | G | H | I |
| | Frnt | Rr | Ttl | Frnt | Rr | | | | | | | | | | | | | | | | | | | | | | | |
| 1) 6100 P245/75R16 | 2522 | 1570 | 4093 | 3925 | 3750 | 31.6 | 12.1 | 73.6 | 18.8 | 30.5 | 22.1 | 34.3 | 24.8 | 8.3 | 71.1 | 15.8 | 25.4 | 19.2 | 27.2 | 23 | 31 | 21 | — | 21 | 16 | 22 | 22 | 33 |
| 2) 6100 LT245/75R16 | 2522 | 1570 | 4093 | 3925 | 3750 | 31.8 | 12.5 | 73.8 | 19.1 | 30.8 | 22.4 | 34.5 | 25.3 | 8.9 | 71.5 | 16.3 | 25.9 | 19.6 | 27.7 | 23 | 31 | 21 | — | 21 | 16 | 22 | 22 | 33 |
| 2) 6100 P265/75R16 | 2522 | 1570 | 4093 | 3925 | 3750 | 32.3 | 12.7 | 74.2 | 19.4 | 31.2 | 22.7 | 34.9 | 25.5 | 9.0 | 71.7 | 16.5 | 26.1 | 19.8 | 27.8 | 24 | 32 | 22 | — | 22 | 17 | 23 | 23 | 34 |

| K 15753 | | 143.5" Wheelbase | | | | Frame Heights at Base Model Curb Weight | | | | | | | Frame Heights and Angular Dimensions are shown at Maximum GAWR Front/Rear | | | | | | | | | | | | | | | | | |
|------------------------|------------------------|------------------|------|------|------|---|------|------|------|------|------|------|---|------|------|------|------|------|------|------|------|----|----|----|---|----|----|----|----|----|
| GVW/Tire | Base Model Curb Weight | | | GAWR | | HE | HF | HG | HM | HR | HS | HS2 | HT | HE | HF | HG | HM | HR | HS | HS2 | HT | A | B | C | D | E | F | G | H | I |
| | Frnt | Rr | Ttl | Frnt | Rr | | | | | | | | | | | | | | | | | | | | | | | | | |
| 1) 6400 P245/75R16 | 2766 | 1697 | 4463 | 3925 | 3750 | 31.0 | 12.2 | 73.5 | 18.4 | 30.1 | 21.8 | 22.6 | 33.6 | 24.9 | 9.4 | 71.1 | 15.7 | 25.4 | 19.1 | 20.3 | 27.4 | 19 | 33 | 23 | — | 22 | 16 | 23 | 22 | 33 |
| 2) 6400 LT245/75R16 | 2766 | 1697 | 4463 | 3925 | 3750 | 31.2 | 12.6 | 73.7 | 18.8 | 30.4 | 22.1 | 22.9 | 33.8 | 25.5 | 9.9 | 71.5 | 16.2 | 25.9 | 19.5 | 20.7 | 27.9 | 19 | 33 | 23 | — | 22 | 16 | 23 | 22 | 33 |
| 2) 6400 P265/75R16 | 2766 | 1697 | 4463 | 3925 | 3750 | 31.6 | 12.9 | 74.1 | 19.1 | 30.8 | 22.4 | 23.3 | 34.2 | 25.6 | 10.0 | 71.8 | 16.4 | 26.1 | 19.7 | 20.9 | 28.0 | 20 | 34 | 24 | — | 22 | 17 | 23 | 24 | 34 |

NOTE: Front coil springs, torsion bars and adjusters are computer selected based on model options and calculated sprung curb weight. Actual heights may vary due to production tolerances.

- 1) Base vehicle
- 2) Optional GVWR—contain minimum equipment required

FRAME HEIGHTS AND RAMP ANGLE DATA

| K 15903 | | 133" Wheelbase | | | | Frame Heights at Base Model Curb Weight | | | | | | | Frame Heights and Angular Dimensions are shown at Maximum GAWR Front/Rear | | | | | | | | | | | | | | | |
|------------------------|------------------------|----------------|------|------|------|---|------|------|------|------|------|------|---|-----|------|------|------|------|------|----|----|----|---|----|----|----|----|----|
| GVW/Tire | Base Model Curb Weight | | | GAWR | | HE | HF | HG | HM | HR | HS | HT | HE | HF | HG | HM | HR | HS | HT | A | B | C | D | E | F | G | H | I |
| | Frt | Rr | Ttl | Frt | Rr | | | | | | | | | | | | | | | | | | | | | | | |
| 1) 6400 P245/75R16 | 2601 | 1616 | 4217 | 3925 | 3750 | 31.5 | 12.2 | 73.3 | 18.6 | 30.4 | 21.9 | 34.1 | 25.0 | 8.9 | 70.6 | 15.6 | 25.4 | 18.9 | 27.4 | 20 | 32 | 22 | — | 22 | 14 | 20 | 22 | 29 |
| 2) 6400 LT245/75R16 | 2601 | 1616 | 4217 | 3925 | 3750 | 31.7 | 12.5 | 73.6 | 18.9 | 30.6 | 22.2 | 34.3 | 25.5 | 9.4 | 71.0 | 16.0 | 25.9 | 19.3 | 27.9 | 20 | 32 | 22 | — | 22 | 15 | 20 | 23 | 29 |
| 2) 6400 P265/75R16 | 2601 | 1616 | 4217 | 3925 | 3750 | 32.1 | 12.8 | 73.9 | 19.2 | 31.0 | 22.6 | 34.7 | 25.6 | 9.5 | 71.2 | 16.2 | 26.1 | 19.5 | 28.1 | 21 | 33 | 23 | — | 22 | 15 | 21 | 24 | 30 |

| K 15953 | | 157.5" Wheelbase | | | | Frame Heights at Base Model Curb Weight | | | | | | | Frame Heights and Angular Dimensions are shown at Maximum GAWR Front/Rear | | | | | | | | | | | | | | | | | |
|------------------------|------------------------|------------------|------|------|------|---|------|------|------|------|------|------|---|------|------|------|------|------|------|------|------|----|----|----|---|----|----|----|----|----|
| GVW/Tire | Base Model Curb Weight | | | GAWR | | HE | HF | HG | HM | HR | HS | HS2 | HT | HE | HF | HG | HM | HR | HS | HS2 | HT | A | B | C | D | E | F | G | H | I |
| | Frt | Rr | Ttl | Frt | Rr | | | | | | | | | | | | | | | | | | | | | | | | | |
| 1) 6400 P245/75R16 | 2861 | 1746 | 4608 | 3925 | 3750 | 30.5 | 12.3 | 73.0 | 18.2 | 29.7 | 21.6 | 22.3 | 33.1 | 24.9 | 9.6 | 71.3 | 15.8 | 25.4 | 19.2 | 20.5 | 27.3 | 17 | 33 | 23 | — | 22 | 14 | 20 | 22 | 29 |
| 2) 6400 LT245/75R16 | 2861 | 1746 | 4608 | 3925 | 3750 | 31.1 | 12.7 | 73.5 | 18.6 | 30.3 | 22.0 | 22.7 | 33.7 | 25.4 | 10.1 | 71.7 | 16.3 | 25.9 | 19.6 | 20.9 | 27.8 | 17 | 33 | 23 | — | 22 | 14 | 20 | 22 | 29 |
| 2) 6400 P265/75R16 | 2861 | 1746 | 4608 | 3925 | 3750 | 31.5 | 12.9 | 73.8 | 18.9 | 30.7 | 22.3 | 23.1 | 34.1 | 25.6 | 10.3 | 72.0 | 16.5 | 26.1 | 19.8 | 21.1 | 28.0 | 18 | 35 | 25 | — | 22 | 15 | 21 | 24 | 30 |

| C 25753 | | 143.5" Wheelbase | | | | Frame Heights at Base Model Curb Weight | | | | | | | Frame Heights and Angular Dimensions are shown at Maximum GAWR Front/Rear | | | | | | | | | | | | | | | | | |
|------------------------|------------------------|------------------|------|------|------|---|------|------|------|------|------|------|---|------|------|------|------|------|------|------|------|----|----|----|---|----|----|----|----|----|
| GVW/Tire | Base Model Curb Weight | | | GAWR | | HE | HF | HG | HM | HR | HS | HS2 | HT | HE | HF | HG | HM | HR | HS | HS2 | HT | A | B | C | D | E | F | G | H | I |
| | Frt | Rr | Ttl | Frt | Rr | | | | | | | | | | | | | | | | | | | | | | | | | |
| 1) 7200 LT225/75R16 | 2686 | 1841 | 4527 | 3880 | 4670 | 32.5 | 12.2 | 74.3 | 19.7 | 31.4 | 22.2 | 23.4 | 35.1 | 26.0 | 10.2 | 71.6 | 17.2 | 26.3 | 19.7 | 20.8 | 28.4 | 17 | 33 | 23 | — | 22 | 19 | 23 | 23 | 34 |
| 2) 7200 LT245/75R16 | 2686 | 1841 | 4527 | 4100 | 4670 | 33.2 | 12.8 | 75.0 | 20.3 | 32.1 | 22.8 | 24.0 | 35.8 | 26.8 | 10.2 | 72.3 | 17.7 | 27.0 | 20.1 | 21.5 | 29.2 | 18 | 34 | 24 | — | 23 | 20 | 24 | 25 | 35 |

NOTE: Front coil springs, torsion bars and adjusters are computer selected based on model options and calculated sprung curb weight. Actual heights may vary due to production tolerances.

- 1) Base vehicle
- 2) Optional GVWR—contain minimum equipment required

FRAME HEIGHTS AND RAMP ANGLE DATA

| C 25903 | | 133" Wheelbase | | | | | Frame Heights at Base Model Curb Weight | | | | | | Frame Heights and Angular Dimensions are shown at Maximum GAWR Front/Rear | | | | | | | | | | | | | | | |
|------------------------|------------------------|----------------|------|------|------|------|---|------|------|------|------|------|---|-----|------|------|------|------|------|----|----|----|---|----|----|----|----|----|
| GVW/Tire | Base Model Curb Weight | | | GAWR | | HE | HF | HG | HM | HR | HS | HT | HE | HF | HG | HM | HR | HS | HT | A | B | C | D | E | F | G | H | I |
| | Frnt | Rr | Ttl | Frnt | Rr | | | | | | | | | | | | | | | | | | | | | | | |
| 1) 7200 LT225/75R16 | 2576 | 1811 | 4387 | 3880 | 4670 | 33.0 | 11.8 | 73.8 | 19.6 | 31.5 | 22.1 | 35.6 | 26.1 | 9.3 | 71.1 | 16.8 | 26.3 | 19.3 | 28.5 | 18 | 31 | 22 | — | 17 | 15 | 21 | 24 | 30 |
| 2) 7200 LT245/75R16 | 2576 | 1811 | 4387 | 4100 | 4670 | 33.6 | 12.4 | 74.4 | 20.3 | 32.2 | 22.7 | 36.3 | 26.8 | 9.4 | 71.8 | 17.3 | 27.0 | 19.8 | 29.3 | 19 | 32 | 22 | — | 18 | 16 | 22 | 25 | 31 |
| 2) 8600 LT245/75R16 | 2641 | 1446 | 4088 | 4100 | 6000 | 34.6 | 12.2 | 74.7 | 20.4 | 32.9 | 22.9 | 37.2 | 26.7 | 9.7 | 71.6 | 17.0 | 26.9 | 19.5 | 29.1 | 19 | 32 | 23 | — | 18 | 16 | 22 | 25 | 31 |

| C 25953 | | 157.5" Wheelbase | | | | | Frame Heights at Base Model Curb Weight | | | | | | Frame Heights and Angular Dimensions are shown at Maximum GAWR Front/Rear | | | | | | | | | | | | | | | | | |
|------------------------|------------------------|------------------|------|------|------|------|---|------|------|------|------|------|---|------|------|------|------|------|------|------|------|----|----|----|---|----|----|----|----|----|
| GVW/Tire | Base Model Curb Weight | | | GAWR | | HE | HF | HG | HM | HR | HS | HS2 | HT | HE | HF | HG | HM | HR | HS | HS2 | HT | A | B | C | D | E | F | G | H | I |
| | Frnt | Rr | Ttl | Frnt | Rr | | | | | | | | | | | | | | | | | | | | | | | | | |
| 1) 8600 LT245/75R16 | 3134 | 2032 | 5167 | 4100 | 6000 | 32.8 | 12.7 | 74.4 | 20.0 | 31.7 | 22.4 | 23.5 | 35.4 | 26.5 | 11.3 | 72.5 | 17.9 | 26.9 | 20.3 | 21.7 | 28.9 | 17 | 36 | 26 | — | 20 | 16 | 22 | 27 | 31 |

| K 25753 | | 143.5" Wheelbase | | | | | Frame Heights at Base Model Curb Weight | | | | | | Frame Heights and Angular Dimensions are shown at Maximum GAWR Front/Rear | | | | | | | | | | | | | | | | | |
|------------------------|------------------------|------------------|------|------|------|------|---|------|------|------|------|------|---|------|------|------|------|------|------|------|------|----|----|----|---|----|----|----|----|----|
| GVW/Tire | Base Model Curb Weight | | | GAWR | | HE | HF | HG | HM | HR | HS | HS2 | HT | HE | HF | HG | HM | HR | HS | HS2 | HT | A | B | C | D | E | F | G | H | I |
| | Frnt | Rr | Ttl | Frnt | Rr | | | | | | | | | | | | | | | | | | | | | | | | | |
| 1) 8600 LT245/75R16 | 3092 | 2074 | 5167 | 4500 | 6000 | 32.5 | 13.9 | 75.0 | 20.9 | 31.7 | 23.3 | 24.2 | 35.0 | 26.2 | 11.4 | 73.0 | 18.2 | 26.9 | 20.6 | 22.1 | 28.6 | 19 | 36 | 26 | — | 23 | 17 | 24 | 27 | 34 |

| K 25903 | | 133" Wheelbase | | | | | Frame Heights at Base Model Curb Weight | | | | | | Frame Heights and Angular Dimensions are shown at Maximum GAWR Front/Rear | | | | | | | | | | | | | | | |
|------------------------|------------------------|----------------|------|------|------|------|---|------|------|------|------|------|---|------|------|------|------|------|------|----|----|----|---|----|----|----|----|----|
| GVW/Tire | Base Model Curb Weight | | | GAWR | | HE | HF | HG | HM | HR | HS | HT | HE | HF | HG | HM | HR | HS | HT | A | B | C | D | E | F | G | H | I |
| | Frnt | Rr | Ttl | Frnt | Rr | | | | | | | | | | | | | | | | | | | | | | | |
| 1) 8600 LT245/75R16 | 3071 | 2064 | 5135 | 4500 | 6000 | 32.6 | 13.9 | 74.7 | 20.9 | 31.6 | 23.4 | 35.2 | 26.1 | 11.4 | 72.5 | 18.2 | 26.9 | 20.7 | 28.4 | 20 | 35 | 26 | — | 17 | 15 | 21 | 27 | 30 |

NOTE: Front coil springs, torsion bars and adjusters are computer selected based on model options and calculated sprung curb weight. Actual heights may vary due to production tolerances.

- 1) Base vehicle
- 2) Optional GVWR—contain minimum equipment required

FRAME HEIGHTS AND RAMP ANGLE DATA

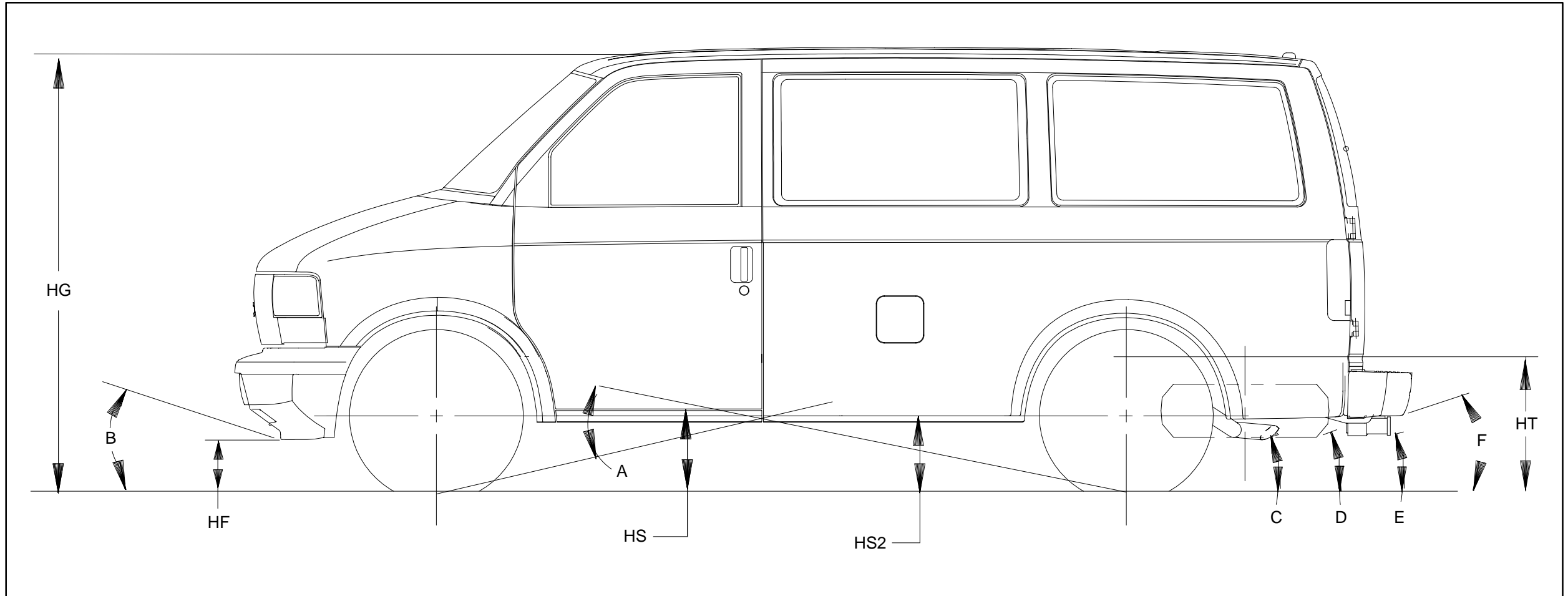
| K 25953 | | 157.5" Wheelbase | | | | Frame Heights at Base Model Curb Weight | | | | | | | Frame Heights and Angular Dimensions are shown at Maximum GAWR Front/Rear | | | | | | | | | | | | | | | | | |
|-----------------------------------|------------------------|------------------|------|------|------|---|------|------|------|------|------|------|---|------|------|------|------|------|------|------|------|----|----|----|---|----|----|----|----|----|
| GVW/Tire | Base Model Curb Weight | | | GAWR | | HE | HF | HG | HM | HR | HS | HS2 | HT | HE | HF | HG | HM | HR | HS | HS2 | HT | A | B | C | D | E | F | G | H | I |
| | Frt | Rr | Ttl | Frt | Rr | | | | | | | | | | | | | | | | | | | | | | | | | |
| ¹⁾ 8600 LT245/75R16 | 3218 | 1991 | 5210 | 4500 | 6000 | 32.8 | 13.9 | 74.9 | 20.8 | 31.9 | 23.3 | 24.2 | 35.4 | 26.3 | 12.2 | 73.1 | 18.6 | 26.9 | 21.1 | 22.3 | 28.6 | 17 | 37 | 27 | — | 20 | 15 | 21 | 27 | 30 |

NOTE: Front coil springs, torsion bars and adjusters are computer selected based on model options and calculated sprung curb weight. Actual heights may vary due to production tolerances.

- 1) Base vehicle
- 2) Optional GVWR—contain minimum equipment required

FRAME HEIGHTS AND RAMP ANGLE DATA

L/M 110(05, 06)



Heights (To Ground)

- HF Bottom of Front Bumper
- HG Top of Roof
- HS Step H-Point-Front
- HS2 Step H-Point-Second
- HT Rear Cargo Load Height

Angle

- A Ramp Breakover

Approach Angle(s) (Bottom of)

- B Air Dam

Departure Angle(s) (Bottom of)

- C Tail Pipe
- D Spare Tire
- E Hitch
- F Rear Bumper

NOTE: All weights are in pounds, dimensions are in inches and angles are in degrees.

FRAME HEIGHTS AND RAMP ANGLE DATA

| L 11005 111.0" Wheelbase | | | | | | Frame Heights at Base Model Curb Weight | | | | | Frame Heights and Angular Dimensions are shown at Maximum GAWR Front/Rear | | | | | | | | | | |
|--------------------------|------------------------|------|------|------|------|---|------|------|------|------|---|------|------|------|------|----|----|----|----|----|----|
| GVW/Tire | Base Model Curb Weight | | | GAWR | | HF | HT | HG | HS | HS2 | HF | HT | HG | HS | HS2 | A | B | C | D | E | F |
| | Frnt | Rr | Ttl | Frnt | Rr | | | | | | | | | | | | | | | | |
| 1) 5850 P215/75R15 | 2410 | 1681 | 4092 | 3050 | 3150 | 9.3 | 26.5 | 75.2 | 18.7 | 20.5 | 7.8 | 21.6 | 72.5 | 16.4 | 17.6 | 28 | 23 | 17 | 18 | 14 | 18 |
| 2) 6100 P215/75R15 | 2457 | 1647 | 4104 | 3050 | 3150 | 9.2 | 26.7 | 75.3 | 18.8 | 20.6 | 8.1 | 21.8 | 72.1 | 16.3 | 17.4 | 28 | 24 | 17 | 18 | 14 | 18 |

| L 11006 111.0" Wheelbase | | | | | | Frame Heights at Base Model Curb Weight | | | | | Frame Heights and Angular Dimensions are shown at Maximum GAWR Front/Rear | | | | | | | | | | |
|--------------------------|------------------------|------|------|------|------|---|------|------|------|------|---|------|------|------|------|----|----|----|----|----|----|
| GVW/Tire | Base Model Curb Weight | | | GAWR | | HF | HT | HG | HS | HS2 | HF | HT | HG | HS | HS2 | A | B | C | D | E | F |
| | Frnt | Rr | Ttl | Frnt | Rr | | | | | | | | | | | | | | | | |
| 1) 6100 P215/75R15 | 2538 | 1880 | 4418 | 3050 | 3150 | 9.4 | 25.8 | 74.8 | 18.5 | 20.1 | 8.3 | 21.7 | 72.2 | 16.4 | 17.5 | 28 | 24 | 17 | 18 | 14 | 18 |

| M 11005 111.0" Wheelbase | | | | | | Frame Heights at Base Model Curb Weight | | | | | Frame Heights and Angular Dimensions are shown at Maximum GAWR Front/Rear | | | | | | | | | | |
|--------------------------|------------------------|------|------|------|------|---|------|------|------|------|---|------|------|------|------|----|----|----|----|----|----|
| GVW/Tire | Base Model Curb Weight | | | GAWR | | HF | HT | HG | HS | HS2 | HF | HT | HG | HS | HS2 | A | B | C | D | E | F |
| | Frnt | Rr | Ttl | Frnt | Rr | | | | | | | | | | | | | | | | |
| 1) 5600 P215/75R15 | 2209 | 1633 | 3843 | 2800 | 3150 | 9.5 | 26.7 | 75.4 | 18.9 | 20.7 | 8.4 | 21.5 | 72.6 | 16.7 | 17.7 | 28 | 24 | 16 | 18 | 14 | 18 |
| 2) 5950 P215/75R15 | 2255 | 1599 | 3854 | 2800 | 3150 | 9.6 | 26.8 | 75.5 | 19.0 | 20.8 | 8.5 | 21.8 | 72.1 | 16.4 | 17.4 | 28 | 25 | 17 | 18 | 14 | 18 |
| 2) 5950 P235/65R15 | 2255 | 1599 | 3854 | 2800 | 3150 | 9.4 | 26.6 | 75.3 | 18.8 | 20.6 | 8.3 | 21.6 | 71.9 | 16.3 | 17.2 | 27 | 24 | 16 | 18 | 14 | 18 |

NOTE: Front coil springs, torsion bars and adjusters are computer selected based on model options and calculated sprung curb weight. Actual heights may vary due to production tolerances.

- 1) Base vehicle
- 2) Optional GVWR—contain minimum equipment required

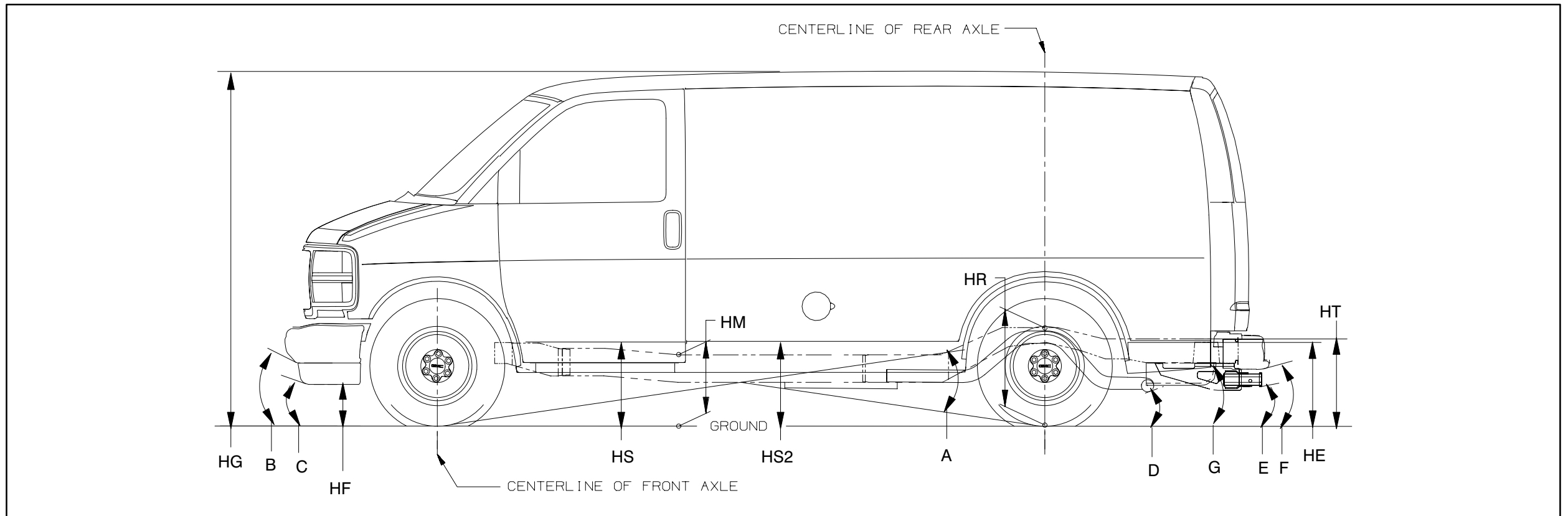
FRAME HEIGHTS AND RAMP ANGLE DATA

| M 11006 | | 111.0" Wheelbase | | | | Frame Heights at Base Model Curb Weight | | | | | Frame Heights and Angular Dimensions are shown at Maximum GAWR Front/Rear | | | | | | | | | | |
|-----------------------|------------------------|------------------|------|------|------|---|------|------|------|------|---|------|------|------|------|----|----|----|----|----|----|
| GVW/Tire | Base Model Curb Weight | | | GAWR | | HF | HT | HG | HS | HS2 | HF | HT | HG | HS | HS2 | A | B | C | D | E | F |
| | Frnt | Rr | Ttl | Frnt | Rr | | | | | | | | | | | | | | | | |
| 1) 5950 P215/75R15 | 2339 | 1849 | 4189 | 2800 | 3150 | 9.4 | 25.9 | 74.9 | 18.6 | 20.2 | 8.5 | 21.8 | 72.1 | 16.4 | 17.4 | 28 | 25 | 17 | 18 | 14 | 18 |
| 2) 5950 P235/65R15 | 2339 | 1849 | 4189 | 2800 | 3150 | 9.2 | 25.7 | 74.7 | 18.4 | 20.0 | 8.3 | 21.6 | 71.9 | 16.2 | 17.2 | 27 | 24 | 16 | 18 | 14 | 18 |

NOTE: Front coil springs, torsion bars and adjusters are computer selected based on model options and calculated sprung curb weight. Actual heights may vary due to production tolerances.

- 1) Base vehicle
- 2) Optional GVWR—contain minimum equipment required

G Van (GMT 600)



Heights (To Ground)

- HE Top of Frame at End
- HF Bottom of Front Air Deflector or Bumper
- HG Roof Height
- HM Normal Top of Frame
- HR Top of Frame at Centerline of Rear Axle
- HS Step H-Point-Front
- HS2 Step H-Point-Second
- HT Rear Cargo Load Height

Angle

- A Ramp Breakover

Approach Angle(s) (Bottom of)

- B Front Bumper
- C Air Dam

Departure Angle(s) (Bottom of)

- D Tailpipe
- E Platform Hitch
- F Rear Bumper
- G Frame at End

NOTE: All weights are in pounds, dimensions are in inches and angles are in degrees.

FRAME HEIGHTS AND RAMP ANGLE DATA

| G 11405 | | 135.0" Wheelbase | | | | Heights at Base Model Curb Weight | | | | | | | Heights and Angular Dimensions are shown at Maximum GAWR Front/Rear | | | | | | | | | | | | |
|-----------------------|------------------------|------------------|------|------|------|-----------------------------------|------|------|------|------|------|------|---|------|------|------|------|------|------|----|----|----|----|----|----|
| GVW/Tire | Base Model Curb Weight | | | GAWR | | HF | HG | HM | HR | HS | HS2 | HT | HF | HG | HM | HR | HS | HS2 | HT | A | B | C | D | E | F |
| | Frt | Rr | Ttl | Frt | Rr | | | | | | | | | | | | | | | | | | | | |
| 1) 6100 P215/75R15 | 2467 | 2073 | 4541 | 3168 | 3168 | 15.1 | 79.8 | 16.9 | 23.1 | 16.9 | 17.4 | 24.3 | 13.5 | 78.3 | 15.3 | 21.2 | 15.3 | 15.8 | 22.1 | 18 | 28 | 21 | 22 | 11 | 16 |
| 2) 7100 P235/75R15 | 2478 | 2083 | 4561 | 3600 | 3968 | 15.5 | 81.3 | 17.9 | 24.8 | 17.9 | 18.6 | 26.3 | 12.9 | 78.7 | 15.3 | 21.5 | 15.2 | 16.0 | 22.4 | 18 | 27 | 20 | 23 | 12 | 17 |

| G 11406 | | 135.0" Wheelbase | | | | Heights at Base Model Curb Weight | | | | | | | Heights and Angular Dimensions are shown at Maximum GAWR Front/Rear | | | | | | | | | | | | |
|-----------------------|------------------------|------------------|------|------|------|-----------------------------------|------|------|------|------|------|------|---|------|------|------|------|------|------|----|----|----|----|----|----|
| GVW/Tire | Base Model Curb Weight | | | GAWR | | HF | HG | HM | HR | HS | HS2 | HT | HF | HG | HM | HR | HS | HS2 | HT | A | B | C | D | E | F |
| | Frt | Rr | Ttl | Frt | Rr | | | | | | | | | | | | | | | | | | | | |
| 1) 7100 P235/75R15 | 2666 | 2292 | 4958 | 3600 | 3968 | 15.0 | 80.9 | 17.5 | 24.4 | 17.4 | 18.2 | 25.9 | 12.9 | 78.7 | 15.3 | 21.5 | 15.2 | 16.0 | 22.4 | 18 | 27 | 20 | 23 | 12 | 17 |

| G 21405 | | 135.0" Wheelbase | | | | Heights at Base Model Curb Weight | | | | | | | Heights and Angular Dimensions are shown at Maximum GAWR Front/Rear | | | | | | | | | | | | |
|------------------------|------------------------|------------------|------|------|------|-----------------------------------|------|------|------|------|------|------|---|------|------|------|------|------|------|----|----|----|----|----|----|
| GVW/Tire | Base Model Curb Weight | | | GAWR | | HF | HG | HM | HR | HS | HS2 | HT | HF | HG | HM | HR | HS | HS2 | HT | A | B | C | D | E | F |
| | Frt | Rr | Ttl | Frt | Rr | | | | | | | | | | | | | | | | | | | | |
| 1) 7300 LT225/75R16 | 2492 | 2199 | 4691 | 3580 | 4380 | 16.9 | 82.6 | 19.2 | 26.1 | 19.2 | 19.9 | 27.5 | 14.7 | 79.9 | 16.8 | 22.5 | 16.7 | 17.4 | 23.1 | 21 | 30 | 23 | 24 | 12 | 17 |
| 2) 8600 LT225/75R16 | 2489 | 2218 | 4707 | 3800 | 5360 | 16.8 | 83.7 | 19.7 | 27.2 | 19.6 | 20.6 | 28.9 | 14.1 | 80.8 | 16.9 | 23.8 | 16.9 | 18.0 | 25.0 | 21 | 29 | 22 | 29 | 14 | 19 |

| G 21406 | | 135.0" Wheelbase | | | | Heights at Base Model Curb Weight | | | | | | | Heights and Angular Dimensions are shown at Maximum GAWR Front/Rear | | | | | | | | | | | | |
|------------------------|------------------------|------------------|------|------|------|-----------------------------------|------|------|------|------|------|------|---|------|------|------|------|------|------|----|----|----|----|----|----|
| GVW/Tire | Base Model Curb Weight | | | GAWR | | HF | HG | HM | HR | HS | HS2 | HT | HF | HG | HM | HR | HS | HS2 | HT | A | B | C | D | E | F |
| | Frt | Rr | Ttl | Frt | Rr | | | | | | | | | | | | | | | | | | | | |
| 1) 8600 LT225/75R16 | 3048 | 2545 | 5594 | 3800 | 5360 | 16.8 | 83.1 | 19.4 | 26.6 | 19.4 | 20.2 | 28.2 | 15.7 | 80.9 | 17.7 | 23.8 | 17.7 | 18.5 | 24.7 | 22 | 32 | 25 | 28 | 14 | 19 |

NOTE: Front coil springs, torsion bars and adjusters are computer selected based on model options and calculated sprung curb weight. Actual heights may vary due to production tolerances.

- 1) Base vehicle
- 2) Optional GVWR—contain minimum equipment required

FRAME HEIGHTS AND RAMP ANGLE DATA

| G 21705 | | 155.0" Wheelbase | | | | Heights at Base Model Curb Weight | | | | | | | Heights and Angular Dimensions are shown at Maximum GAWR Front/Rear | | | | | | | | | | | | |
|------------------------|-------------------------------|-------------------------|------------|-------------|-----------|--|-----------|-----------|-----------|-----------|------------|-----------|--|-----------|-----------|-----------|-----------|------------|-----------|----------|----------|----------|----------|----------|----------|
| GVW/Tire | Base Model Curb Weight | | | GAWR | | HF | HG | HM | HR | HS | HS2 | HT | HF | HG | HM | HR | HS | HS2 | HT | A | B | C | D | E | F |
| | Frnt | Rr | Ttl | Frnt | Rr | | | | | | | | | | | | | | | | | | | | |
| 1) 7300 LT225/75R16 | 2639 | 2238 | 4877 | 3580 | 4380 | 15.3 | 81.2 | 18.2 | 26.0 | 18.2 | 19.2 | 27.7 | 13.7 | 78.6 | 16.2 | 22.5 | 16.1 | 17.1 | 23.5 | 17 | 28 | 21 | 25 | 12 | 17 |
| 2) 8600 LT225/75R16 | 2636 | 2256 | 4892 | 4100 | 5360 | 16.5 | 82.3 | 19.4 | 27.1 | 19.3 | 20.3 | 28.8 | 13.5 | 79.6 | 16.5 | 23.8 | 16.4 | 18.0 | 25.0 | 18 | 28 | 21 | 29 | 14 | 19 |
| 2) 8600 LT225/75R16 | 3169 | 2378 | 5547 | 4300 | 5360 | 16.6 | 82.2 | 19.4 | 27.1 | 19.3 | 20.3 | 28.8 | 14.7 | 80.2 | 17.3 | 23.9 | 17.3 | 18.6 | 24.8 | 19 | 30 | 23 | 28 | 14 | 19 |

| G 21706 | | 155.0" Wheelbase | | | | Heights at Base Model Curb Weight | | | | | | | Heights and Angular Dimensions are shown at Maximum GAWR Front/Rear | | | | | | | | | | | | |
|------------------------|-------------------------------|-------------------------|------------|-------------|-----------|--|-----------|-----------|-----------|-----------|------------|-----------|--|-----------|-----------|-----------|-----------|------------|-----------|----------|----------|----------|----------|----------|----------|
| GVW/Tire | Base Model Curb Weight | | | GAWR | | HF | HG | HM | HR | HS | HS2 | HT | HF | HG | HM | HR | HS | HS2 | HT | A | B | C | D | E | F |
| | Frnt | Rr | Ttl | Frnt | Rr | | | | | | | | | | | | | | | | | | | | |
| 1) 8600 LT225/75R16 | 3100 | 2799 | 5899 | 4100 | 5360 | 16.9 | 81.3 | 19.2 | 26.2 | 19.1 | 19.9 | 27.6 | 15.1 | 80.1 | 17.4 | 23.8 | 17.4 | 18.6 | 24.7 | 19 | 31 | 24 | 28 | 14 | 19 |

| G 31405 | | 135.0" Wheelbase | | | | Heights at Base Model Curb Weight | | | | | | | Heights and Angular Dimensions are shown at Maximum GAWR Front/Rear | | | | | | | | | | | | |
|------------------------|-------------------------------|-------------------------|------------|-------------|-----------|--|-----------|-----------|-----------|-----------|------------|-----------|--|-----------|-----------|-----------|-----------|------------|-----------|----------|----------|----------|----------|----------|----------|
| GVW/Tire | Base Model Curb Weight | | | GAWR | | HF | HG | HM | HR | HS | HS2 | HT | HF | HG | HM | HR | HS | HS2 | HT | A | B | C | D | E | F |
| | Frnt | Rr | Ttl | Frnt | Rr | | | | | | | | | | | | | | | | | | | | |
| 1) 9500 LT245/75R16 | 2781 | 2480 | 5262 | 4300 | 6084 | 17.3 | 84.0 | 20.1 | 27.4 | 20.0 | 21.0 | 29.1 | 14.3 | 81.5 | 17.3 | 24.2 | 17.3 | 18.6 | 25.4 | 22 | 30 | 23 | 30 | 15 | 20 |

| G 31406 | | 135.0" Wheelbase | | | | Heights at Base Model Curb Weight | | | | | | | Heights and Angular Dimensions are shown at Maximum GAWR Front/Rear | | | | | | | | | | | | |
|------------------------|-------------------------------|-------------------------|------------|-------------|-----------|--|-----------|-----------|-----------|-----------|------------|-----------|--|-----------|-----------|-----------|-----------|------------|-----------|----------|----------|----------|----------|----------|----------|
| GVW/Tire | Base Model Curb Weight | | | GAWR | | HF | HG | HM | HR | HS | HS2 | HT | HF | HG | HM | HR | HS | HS2 | HT | A | B | C | D | E | F |
| | Frnt | Rr | Ttl | Frnt | Rr | | | | | | | | | | | | | | | | | | | | |
| 1) 9500 LT245/75R16 | 2980 | 2802 | 5783 | 4300 | 6084 | 17.6 | 83.5 | 20.0 | 26.8 | 20.0 | 20.7 | 28.4 | 15.2 | 81.5 | 17.8 | 24.2 | 17.7 | 18.9 | 25.3 | 22 | 31 | 24 | 30 | 15 | 20 |

NOTE: Front coil springs, torsion bars and adjusters are computer selected based on model options and calculated sprung curb weight. Actual heights may vary due to production tolerances.

- 1) Base vehicle
- 2) Optional GVWR—contain minimum equipment required

FRAME HEIGHTS AND RAMP ANGLE DATA

| G 31503 | | 139.0" Wheelbase | | | | Heights at Base Model Curb Weight | | | | | | Heights and Angular Dimensions are shown at Maximum GAWR Front/Rear | | | | | | | | | | | | |
|--------------------------|------------------------|------------------|------|------|------|-----------------------------------|------|------|------|------|------|---|------|------|------|------|------|----|----|----|----|---|---|----|
| GVW/Tire | Base Model Curb Weight | | | GAWR | | HE | HF | HG | HM | HR | HS | HE | HF | HG | HM | HR | HS | A | B | C | D | E | F | G |
| | Frnt | Rr | Ttl | Frnt | Rr | | | | | | | | | | | | | | | | | | | |
| 1) 9500 LT245/75R16 | 2523 | 1516 | 4039 | 4100 | 6084 | 28.7 | 17.3 | 84.0 | 24.0 | 30.1 | 21.2 | 25.2 | 14.2 | 81.8 | 21.2 | 27.1 | 18.3 | 23 | 29 | 22 | 29 | — | — | 18 |
| 2) 10,000 LT225/75R16 | 2755 | 1815 | 4570 | 4100 | 7500 | 28.3 | 16.3 | 83.2 | 23.2 | 29.5 | 20.3 | 23.1 | 13.7 | 82.1 | 20.7 | 26.1 | 17.8 | 22 | 28 | 21 | 26 | — | — | 16 |
| 2) 11,000 LT225/75R16 | 2755 | 1815 | 4570 | 4100 | 8250 | 28.4 | 16.3 | 83.2 | 23.2 | 29.5 | 20.4 | 23.3 | 13.8 | 81.8 | 20.6 | 26.1 | 17.7 | 22 | 28 | 21 | 26 | — | — | 16 |
| 2) 12,000 LT225/75R16 | 2755 | 1815 | 4570 | 4300 | 8600 | 28.4 | 16.3 | 83.3 | 23.2 | 29.5 | 20.4 | 23.8 | 13.4 | 81.1 | 20.3 | 26.1 | 17.4 | 22 | 28 | 21 | 27 | — | — | 16 |

| G 31532 | | 139.0" Wheelbase | | | | Heights at Base Model Curb Weight | | | | | | Heights and Angular Dimensions are shown at Maximum GAWR Front/Rear | | | | | | | | | | | | |
|--------------------------|------------------------|------------------|------|------|------|-----------------------------------|------|------|------|------|------|---|------|------|------|------|------|----|----|----|----|---|---|----|
| GVW/Tire | Base Model Curb Weight | | | GAWR | | HE | HF | HG | HM | HR | HS | HE | HF | HG | HM | HR | HS | A | B | C | D | E | F | G |
| | Frnt | Rr | Ttl | Frnt | Rr | | | | | | | | | | | | | | | | | | | |
| 1) 9500 LT245/75R16 | 2758 | 1653 | 4411 | 4100 | 6084 | 28.9 | 16.8 | 83.8 | 23.7 | 30.0 | 20.9 | 25.2 | 14.2 | 81.8 | 21.2 | 27.1 | 18.3 | 23 | 29 | 22 | 29 | — | — | 18 |
| 2) 11,500 LT225/75R16 | 2829 | 1732 | 4561 | 4300 | 8250 | 28.5 | 16.1 | 83.2 | 23.2 | 29.6 | 20.3 | 23.7 | 13.4 | 81.3 | 20.3 | 26.1 | 17.5 | 22 | 28 | 20 | 27 | — | — | 16 |
| 2) 12,300 LT225/75R16 | 2829 | 1732 | 4561 | 4300 | 8600 | 28.8 | 16.1 | 83.3 | 23.2 | 29.8 | 20.4 | 24.1 | 13.5 | 80.8 | 20.3 | 26.1 | 17.4 | 22 | 28 | 21 | 27 | — | — | 17 |

| G 31705 | | 155.0" Wheelbase | | | | Heights at Base Model Curb Weight | | | | | | Heights and Angular Dimensions are shown at Maximum GAWR Front/Rear | | | | | | | | | | | | | |
|------------------------|------------------------|------------------|------|------|------|-----------------------------------|------|------|------|------|------|---|------|------|------|------|------|------|------|----|----|----|----|----|----|
| GVW/Tire | Base Model Curb Weight | | | GAWR | | HF | HG | HM | HR | HS | HS2 | HT | HF | HG | HM | HR | HS | HS2 | HT | A | B | C | D | E | F |
| | Frnt | Rr | Ttl | Frnt | Rr | | | | | | | | | | | | | | | | | | | | |
| 1) 9500 LT245/75R16 | 2911 | 2541 | 5452 | 4300 | 6084 | 17.1 | 82.5 | 19.8 | 27.4 | 19.8 | 20.7 | 29.0 | 14.4 | 80.1 | 17.2 | 24.3 | 17.2 | 18.7 | 25.4 | 19 | 30 | 23 | 30 | 15 | 20 |

NOTE: Front coil springs, torsion bars and adjusters are computer selected based on model options and calculated sprung curb weight. Actual heights may vary due to production tolerances.

- 1) Base vehicle
- 2) Optional GVWR—contain minimum equipment required

FRAME HEIGHTS AND RAMP ANGLE DATA

| G 31706 | | 155.0" Wheelbase | | | | Heights at Base Model Curb Weight | | | | | | | Heights and Angular Dimensions are shown at Maximum GAWR Front/Rear | | | | | | | | | | | | |
|------------------------|------------------------|------------------|------|------|------|-----------------------------------|------|------|------|------|------|------|---|------|------|------|------|------|------|----|----|----|----|----|----|
| GVW/Tire | Base Model Curb Weight | | | GAWR | | HF | HG | HM | HR | HS | HS2 | HT | HF | HG | HM | HR | HS | HS2 | HT | A | B | C | D | E | F |
| | Frt | Rr | Ttl | Frt | Rr | | | | | | | | | | | | | | | | | | | | |
| 1) 9500 LT245/75R16 | 3088 | 2991 | 6080 | 4300 | 6084 | 17.5 | 81.8 | 19.8 | 26.7 | 19.7 | 20.4 | 28.1 | 15.2 | 80.5 | 17.7 | 24.3 | 17.7 | 18.9 | 25.3 | 20 | 31 | 24 | 30 | 15 | 20 |

| G 31803 | | 159.0" Wheelbase | | | | Heights at Base Model Curb Weight | | | | | | | Heights and Angular Dimensions are shown at Maximum GAWR Front/Rear | | | | | | | | | | | |
|--------------------------|------------------------|------------------|------|------|------|-----------------------------------|------|------|------|------|------|------|---|------|------|------|------|----|----|----|----|---|---|----|
| GVW/Tire | Base Model Curb Weight | | | GAWR | | HE | HF | HG | HM | HR | HS | HE | HF | HG | HM | HR | HS | A | B | C | D | E | F | G |
| | Frt | Rr | Ttl | Frt | Rr | | | | | | | | | | | | | | | | | | | |
| 1) 10,000 LT225/75R16 | 2795 | 1779 | 4575 | 4100 | 7500 | 28.1 | 16.3 | 83.0 | 23.0 | 29.5 | 20.2 | 23.1 | 13.8 | 82.1 | 20.5 | 26.1 | 17.7 | 21 | 28 | 21 | 26 | — | — | 16 |
| 2) 11,000 LT225/75R16 | 2795 | 1779 | 4575 | 4100 | 8250 | 28.2 | 16.3 | 83.0 | 23.0 | 29.5 | 20.2 | 23.2 | 13.9 | 81.8 | 20.4 | 26.1 | 17.7 | 21 | 28 | 21 | 26 | — | — | 16 |
| 2) 12,000 LT225/75R16 | 2795 | 1779 | 4575 | 4300 | 8600 | 28.2 | 16.3 | 83.0 | 23.0 | 29.5 | 20.2 | 23.7 | 13.6 | 81.0 | 20.1 | 26.1 | 17.3 | 21 | 28 | 21 | 26 | — | — | 16 |

| G 31832 | | 159.0" Wheelbase | | | | Heights at Base Model Curb Weight | | | | | | | Heights and Angular Dimensions are shown at Maximum GAWR Front/Rear | | | | | | | | | | | |
|--------------------------|------------------------|------------------|------|------|------|-----------------------------------|------|------|------|------|------|------|---|------|------|------|------|----|----|----|----|---|---|----|
| GVW/Tire | Base Model Curb Weight | | | GAWR | | HE | HF | HG | HM | HR | HS | HE | HF | HG | HM | HR | HS | A | B | C | D | E | F | G |
| | Frt | Rr | Ttl | Frt | Rr | | | | | | | | | | | | | | | | | | | |
| 1) 11,500 LT225/75R16 | 2849 | 1775 | 4625 | 4300 | 8250 | 28.2 | 16.2 | 82.9 | 23.0 | 29.6 | 20.2 | 23.6 | 13.5 | 81.2 | 20.2 | 26.1 | 17.4 | 21 | 28 | 21 | 26 | — | — | 16 |
| 2) 12,300 LT225/75R16 | 2849 | 1775 | 4625 | 4300 | 8600 | 28.5 | 16.2 | 83.0 | 23.0 | 29.8 | 20.2 | 23.6 | 13.6 | 80.7 | 20.1 | 26.1 | 17.3 | 21 | 28 | 21 | 27 | — | — | 17 |

NOTE: Front coil springs, torsion bars and adjusters are computer selected based on model options and calculated sprung curb weight. Actual heights may vary due to production tolerances.

- 1) Base vehicle
- 2) Optional GVWR—contain minimum equipment required

FRAME HEIGHTS AND RAMP ANGLE DATA

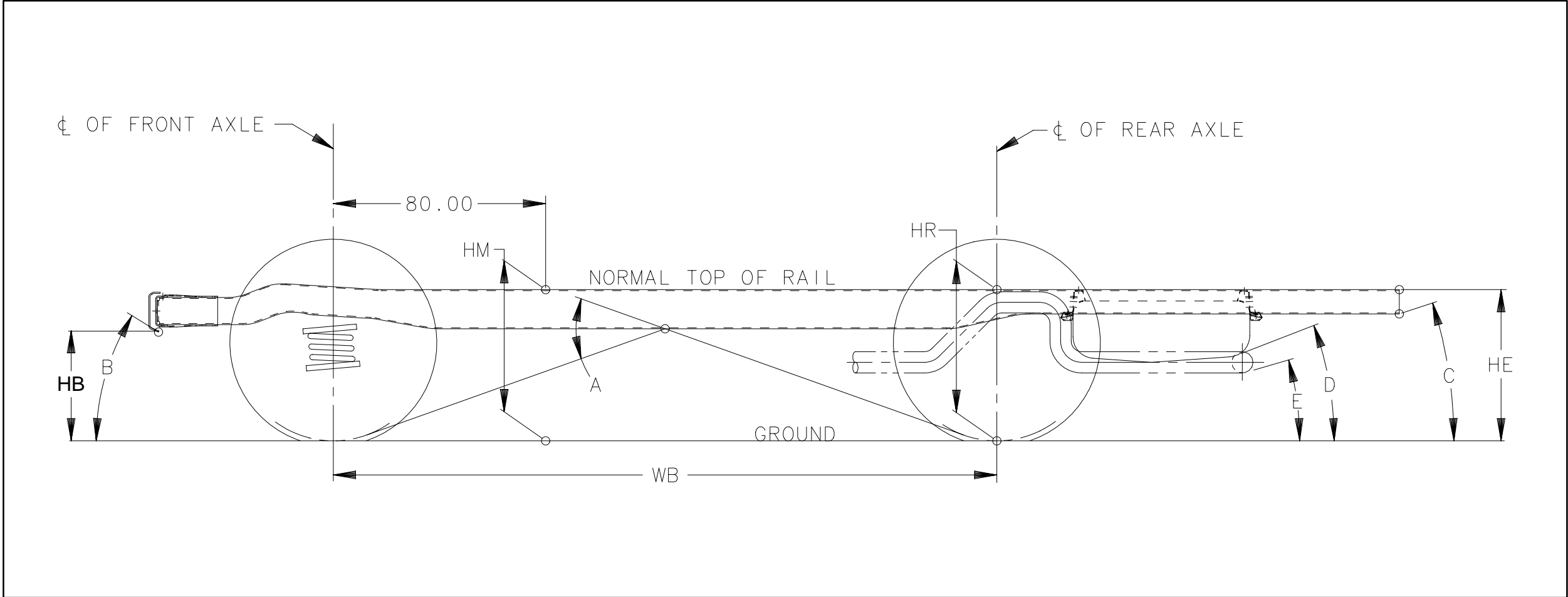
| G 31903 | | 177.0" Wheelbase | | | | Heights at Base Model Curb Weight | | | | | | Heights and Angular Dimensions are shown at Maximum GAWR Front/Rear | | | | | | | | | | | | |
|-------------------------------------|------------------------|------------------|------|------|------|-----------------------------------|------|------|------|------|------|---|------|------|------|------|------|----|----|----|----|---|---|----|
| GVW/Tire | Base Model Curb Weight | | | GAWR | | HE | HF | HG | HM | HR | HS | HE | HF | HG | HM | HR | HS | A | B | C | D | E | F | G |
| | Frnt | Rr | Ttl | Frnt | Rr | | | | | | | | | | | | | | | | | | | |
| ¹⁾ 12,000 LT225/75R16 | 2868 | 1774 | 4642 | 4300 | 8600 | 27.8 | 16.9 | 83.1 | 23.2 | 29.6 | 20.4 | 23.3 | 14.5 | 81.3 | 20.5 | 26.1 | 17.7 | 19 | 29 | 23 | 26 | — | — | 16 |

| G 31932 | | 177.0" Wheelbase | | | | Heights at Base Model Curb Weight | | | | | | Heights and Angular Dimensions are shown at Maximum GAWR Front/Rear | | | | | | | | | | | | |
|-------------------------------------|------------------------|------------------|------|------|------|-----------------------------------|------|------|------|------|------|---|------|------|------|------|------|----|----|----|----|---|---|----|
| GVW/Tire | Base Model Curb Weight | | | GAWR | | HE | HF | HG | HM | HR | HS | HE | HF | HG | HM | HR | HS | A | B | C | D | E | F | G |
| | Frnt | Rr | Ttl | Frnt | Rr | | | | | | | | | | | | | | | | | | | |
| ¹⁾ 12,300 LT225/75R16 | 2922 | 1765 | 4687 | 4300 | 8600 | 28.2 | 16.7 | 83.1 | 23.2 | 29.8 | 20.4 | 23.6 | 14.5 | 81.0 | 20.5 | 26.1 | 17.7 | 19 | 29 | 23 | 26 | — | — | 16 |

NOTE: Front coil springs, torsion bars and adjusters are computer selected based on model options and calculated sprung curb weight. Actual heights may vary due to production tolerances.

- 1) Base vehicle
- 2) Optional GVWR—contain minimum equipment required

P 30032 Models w/Independent Front Suspension



Heights (To Ground)

- HB Bottom of Bumper
- HM Normal Top of Frame
- HR Top of Frame at Centerline of Rear Axle
- HE Top of Frame at End

Angle

- A Ramp Breakover (Muffler)

Approach Angle(s) (Bottom of)

- B Front crossmember

Departure Angle(s) (Bottom of)

- C Frame
- D Fuel tank
- E Tail pipe

NOTE: All weights are in pounds, dimensions are in inches and angles are in degrees.

FRAME HEIGHTS AND RAMP ANGLE DATA

| P 31432 158.5" Wheelbase | | | | | | Frame Heights at Base Model Curb Weight | | | | Frame Heights and Angular Dimensions are shown at Maximum GAWR Front/Rear | | | | | | | | |
|--------------------------|------------------------|------|------|------|--------|---|------|------|------|---|------|------|------|----|----|----|----|----|
| GVW/Tire | Base Model Curb Weight | | | GAWR | | HB | HE | HM | HR | HB | HE | HM | HR | A | B | C | D | E |
| | Frt | Rr | Ttl | Frt | Rr | | | | | | | | | | | | | |
| 1) 12,300 7.5R/16D | 2513 | 1889 | 4402 | 4880 | 7500 | 21.0 | 28.9 | 28.3 | 28.6 | 17.9 | 23.8 | 24.7 | 24.1 | 17 | 35 | 17 | 14 | 12 |
| 2) 14,800 225/70R19.5 | 2609 | 2159 | 4769 | 5500 | 10,000 | 21.2 | 33.3 | 29.7 | 32.0 | 17.5 | 27.5 | 25.7 | 27.1 | 19 | 34 | 20 | 18 | 16 |

| P 31832 178.0" Wheelbase | | | | | | Frame Heights at Base Model Curb Weight | | | | Frame Heights and Angular Dimensions are shown at Maximum GAWR Front/Rear | | | | | | | | |
|--------------------------|------------------------|------|------|------|--------|---|------|------|------|---|------|------|------|----|----|----|----|----|
| GVW/Tire | Base Model Curb Weight | | | GAWR | | HB | HE | HM | HR | HB | HE | HM | HR | A | B | C | D | E |
| | Frt | Rr | Ttl | Frt | Rr | | | | | | | | | | | | | |
| 1) 14,800 225/70R19.5 | 2615 | 2218 | 4833 | 5500 | 10,000 | 21.3 | 33.7 | 29.6 | 31.9 | 17.5 | 27.6 | 25.6 | 27.0 | 17 | 34 | 13 | 18 | 16 |
| 2) 16,500 225/70R19.5 | 2615 | 2218 | 4833 | 5500 | 11,000 | 21.2 | 33.9 | 29.6 | 32.0 | 17.7 | 27.5 | 25.4 | 26.6 | 16 | 34 | 13 | 17 | 16 |

| P 31932 190.0" Wheelbase | | | | | | Frame Heights at Base Model Curb Weight | | | | Frame Heights and Angular Dimensions are shown at Maximum GAWR Front/Rear | | | | | | | | |
|--------------------------|------------------------|------|------|------|--------|---|------|------|------|---|------|------|------|----|----|----|----|----|
| GVW/Tire | Base Model Curb Weight | | | GAWR | | HB | HE | HM | HR | HB | HE | HM | HR | A | B | C | D | E |
| | Frt | Rr | Ttl | Frt | Rr | | | | | | | | | | | | | |
| 1) 14,800 225/70R19.5 | 2654 | 2244 | 4898 | 5500 | 10,000 | 21.3 | 33.6 | 29.5 | 31.9 | 17.6 | 27.6 | 25.5 | 27.0 | 16 | 34 | 13 | 18 | 16 |
| 2) 16,500 225/70R19.5 | 2654 | 2244 | 4898 | 5500 | 11,000 | 21.2 | 33.8 | 29.5 | 32.0 | 17.7 | 27.5 | 25.4 | 26.6 | 15 | 34 | 13 | 17 | 16 |

NOTE: Front coil springs, torsion bars and adjusters are computer selected based on model options and calculated sprung curb weight. Actual heights may vary due to production tolerances.

- 1) Base vehicle
- 2) Optional GVWR—contain minimum equipment required

FRAME HEIGHTS AND RAMP ANGLE DATA

| P 32032 208.0" Wheelbase | | | | | | Frame Heights at Base Model Curb Weight | | | | Frame Heights and Angular Dimensions are shown at Maximum GAWR Front/Rear | | | | | | | | |
|--------------------------|------------------------|------|------|------|--------|---|------|------|------|---|------|------|------|----|----|----|----|----|
| GVW/Tire | Base Model Curb Weight | | | GAWR | | HB | HE | HM | HR | HB | HE | HM | HR | A | B | C | D | E |
| | Frt | Rr | Ttl | Frt | Rr | | | | | | | | | | | | | |
| 1) 14,800 225/70R19.5 | 2677 | 2247 | 4924 | 5500 | 10,000 | 21.3 | 33.5 | 29.4 | 31.9 | 17.6 | 27.5 | 25.5 | 27.0 | 14 | 34 | 13 | 17 | 16 |
| 2) 16,500 225/70R19.5 | 2677 | 2247 | 4924 | 5500 | 11,000 | 21.3 | 33.7 | 29.4 | 32.0 | 17.7 | 27.4 | 25.3 | 26.6 | 14 | 34 | 13 | 17 | 15 |

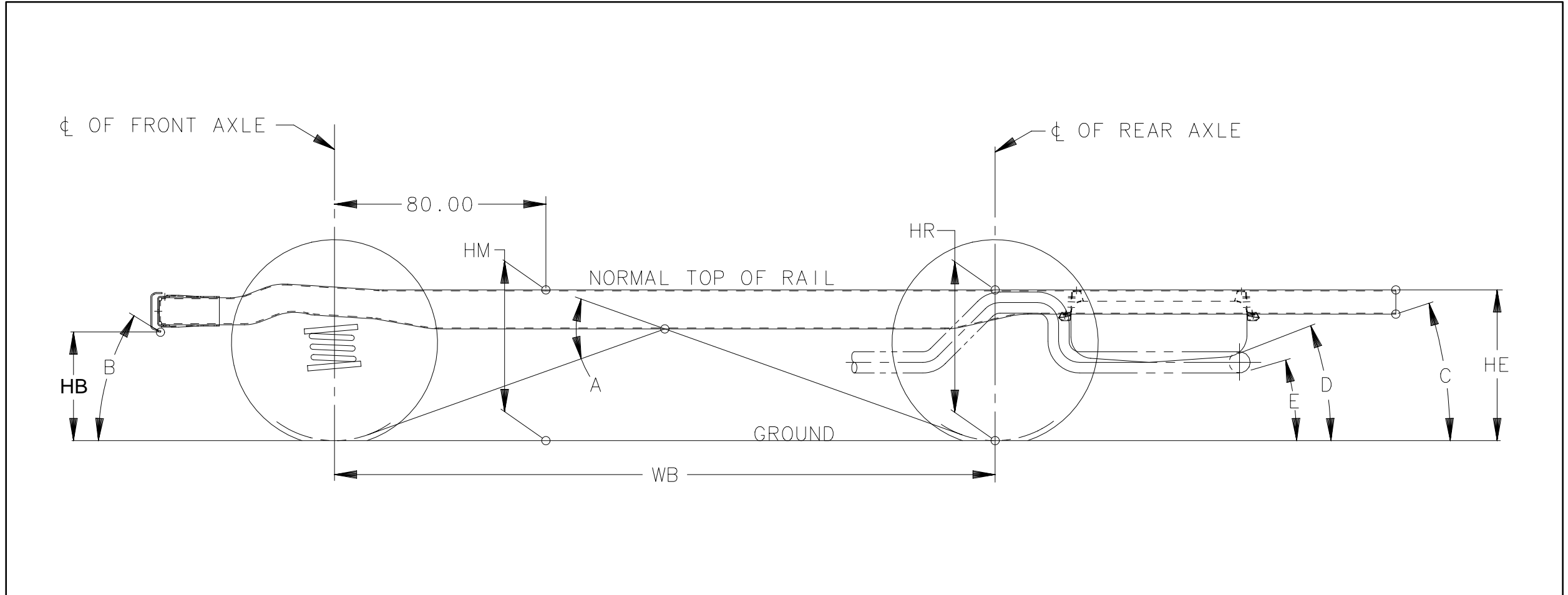
| P 32132 228.0" Wheelbase | | | | | | Frame Heights at Base Model Curb Weight | | | | Frame Heights and Angular Dimensions are shown at Maximum GAWR Front/Rear | | | | | | | | |
|--------------------------|------------------------|------|------|------|--------|---|------|------|------|---|------|------|------|----|----|----|----|----|
| GVW/Tire | Base Model Curb Weight | | | GAWR | | HB | HE | HM | HR | HB | HE | HM | HR | A | B | C | D | E |
| | Frt | Rr | Ttl | Frt | Rr | | | | | | | | | | | | | |
| 1) 16,500 225/70R19.5 | 2841 | 2292 | 5133 | 5500 | 11,000 | 21.1 | 33.6 | 29.2 | 32.0 | 17.7 | 27.3 | 25.3 | 26.6 | 13 | 34 | 13 | 17 | 15 |

NOTE: Front coil springs, torsion bars and adjusters are computer selected based on model options and calculated sprung curb weight. Actual heights may vary due to production tolerances.

- 1) Base vehicle
- 2) Optional GVWR—contain minimum equipment required

FRAME HEIGHTS AND RAMP ANGLE DATA

P 30042 Models with Independent Front Suspension



Heights (To Ground)

- HB Bottom of Bumper
- HM Normal Top of Frame
- HR Top of Frame at Centerline of Rear Axle
- HE Top of Frame at End

Angle

- A Ramp Breakover (Muffler)

Approach Angle(s) (Bottom of)

- B Front crossmember

Departure Angle(s) (Bottom of)

- C Frame
- D Fuel tank
- E Tail pipe

NOTE: All weights are in pounds, dimensions are in inches and angles are in degrees.

FRAME HEIGHTS AND RAMP ANGLE DATA

| P 30842 125.0" Wheelbase | | | | | | Frame Heights at Base Model Curb Weight | | | | Frame Heights and Angular Dimensions are shown at Maximum GAWR Front/Rear | | | | | | | | |
|--------------------------|------------------------|------|------|------|--------|---|------|------|------|---|------|------|------|----|----|----|----|----|
| GVW/Tire | Base Model Curb Weight | | | GAWR | | HB | HE | HM | HR | HB | HE | HM | HR | A | B | C | D | E |
| | Frt | Rr | Ttl | Frt | Rr | | | | | | | | | | | | | |
| 1) 9400 LT245/75R16 | 2175 | 1679 | 3854 | 4000 | 6084 | 18.3 | 28.4 | 27.2 | 27.9 | 15.6 | 22.7 | 24.0 | 23.5 | 22 | 29 | 21 | 12 | 14 |
| 2) 10,000 LT215/85R16 | 2267 | 1931 | 4198 | 4000 | 7900 | 18.0 | 28.9 | 27.2 | 28.2 | 16.6 | 22.1 | 24.7 | 23.6 | 23 | 31 | 20 | 11 | 13 |
| 2) 11,000 LT215/85R16 | 2267 | 1931 | 4198 | 4000 | 7900 | 18.0 | 28.9 | 27.2 | 28.2 | 16.8 | 22.3 | 24.6 | 23.6 | 23 | 31 | 20 | 12 | 13 |
| 2) 12,000 8R19.5 | 2445 | 2333 | 4778 | 4500 | 11,000 | 19.4 | 32.4 | 29.4 | 31.2 | 18.8 | 26.3 | 27.9 | 27.5 | 29 | 33 | 24 | 16 | 19 |
| 2) 14,100 8R19.5 | 2445 | 2333 | 4778 | 4500 | 11,000 | 19.4 | 32.4 | 29.4 | 31.2 | 19.0 | 26.7 | 27.6 | 27.5 | 28 | 34 | 24 | 16 | 19 |

| P 31042 133.0" Wheelbase | | | | | | Frame Heights at Base Model Curb Weight | | | | Frame Heights and Angular Dimensions are shown at Maximum GAWR Front/Rear | | | | | | | | |
|--------------------------|------------------------|------|------|------|--------|---|------|------|------|---|------|------|------|----|----|----|----|----|
| GVW/Tire | Base Model Curb Weight | | | GAWR | | HB | HE | HM | HR | HB | HE | HM | HR | A | B | C | D | E |
| | Frt | Rr | Ttl | Frt | Rr | | | | | | | | | | | | | |
| 1) 9400 LT245/75R16 | 2178 | 1692 | 3870 | 4000 | 6084 | 18.3 | 28.6 | 27.2 | 28.0 | 15.5 | 23.1 | 24.1 | 23.9 | 21 | 29 | 16 | 13 | 15 |
| 2) 10,000 LT215/85R16 | 2270 | 1942 | 4213 | 4000 | 7900 | 18.0 | 29.0 | 27.1 | 28.2 | 16.6 | 21.8 | 24.7 | 23.6 | 22 | 31 | 15 | 11 | 13 |
| 2) 11,000 LT215/85R16 | 2270 | 1942 | 4213 | 4000 | 7900 | 18.0 | 29.0 | 27.1 | 28.2 | 16.8 | 22.0 | 24.6 | 23.6 | 22 | 31 | 15 | 12 | 14 |
| 2) 12,000 8R19.5 | 2449 | 2345 | 4794 | 4500 | 11,000 | 19.2 | 32.6 | 29.1 | 31.1 | 18.3 | 25.5 | 27.5 | 27.1 | 27 | 33 | 18 | 16 | 19 |
| 2) 14,100 8R19.5 | 2449 | 2345 | 4794 | 4500 | 11,000 | 19.1 | 32.9 | 29.2 | 31.3 | 18.5 | 26.2 | 27.2 | 27.2 | 26 | 34 | 18 | 16 | 20 |

NOTE: Front coil springs, torsion bars and adjusters are computer selected based on model options and calculated sprung curb weight. Actual heights may vary due to production tolerances.

- 1) Base vehicle
- 2) Optional GVWR—contain minimum equipment required

FRAME HEIGHTS AND RAMP ANGLE DATA

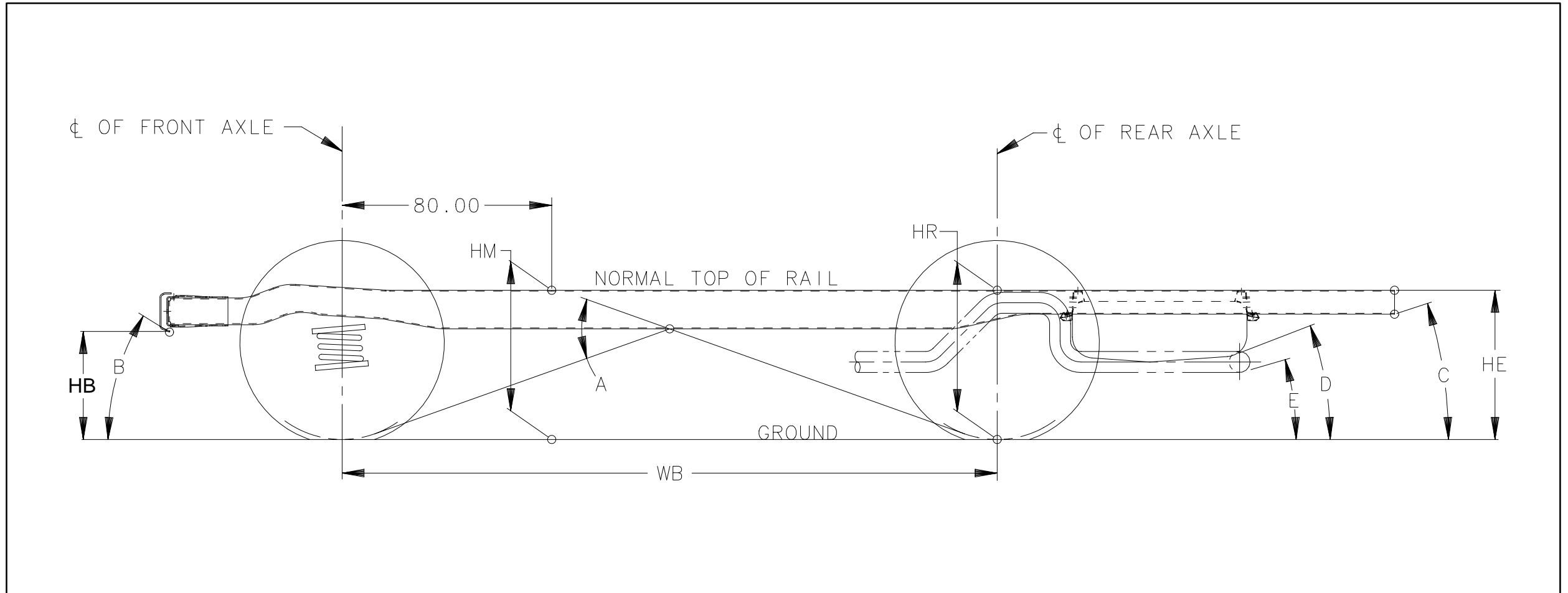
| P 31442 157.0" Wheelbase | | | | | | Frame Heights at Base Model Curb Weight | | | | Frame Heights and Angular Dimensions are shown at Maximum GAWR Front/Rear | | | | | | | | |
|--------------------------|------------------------|------|------|------|--------|---|------|------|------|---|------|------|------|----|----|----|----|----|
| GVW/Tire | Base Model Curb Weight | | | GAWR | | HB | HE | HM | HR | HB | HE | HM | HR | A | B | C | D | E |
| | Frt | Rr | Ttl | Frt | Rr | | | | | | | | | | | | | |
| 1) 9400 LT245/75R16 | 2209 | 1704 | 3914 | 4000 | 6084 | 18.3 | 28.3 | 27.1 | 27.9 | 15.6 | 22.7 | 23.9 | 23.5 | 18 | 29 | 16 | 12 | 14 |
| 2) 10,000 LT215/85R16 | 2301 | 1956 | 4257 | 4000 | 7900 | 18.0 | 28.8 | 27.0 | 28.2 | 16.6 | 22.1 | 24.8 | 23.6 | 19 | 31 | 15 | 12 | 14 |
| 2) 11,000 LT215/85R16 | 2301 | 1956 | 4257 | 4000 | 7900 | 18.0 | 28.8 | 27.0 | 28.2 | 16.1 | 22.3 | 25.3 | 23.6 | 20 | 30 | 16 | 12 | 14 |
| 2) 12,000 8R19.5 | 2479 | 2358 | 4837 | 4500 | 11,000 | 21.3 | 31.6 | 30.2 | 31.1 | 18.4 | 25.7 | 27.4 | 27.1 | 23 | 33 | 18 | 16 | 19 |
| 2) 14,100 8R19.5 | 2479 | 2358 | 4837 | 4500 | 11,000 | 21.3 | 31.6 | 30.2 | 31.1 | 18.6 | 26.3 | 27.2 | 27.1 | 22 | 34 | 19 | 16 | 20 |

| P 31842 178.0" Wheelbase | | | | | | Frame Heights at Base Model Curb Weight | | | | Frame Heights and Angular Dimensions are shown at Maximum GAWR Front/Rear | | | | | | | | |
|--------------------------|------------------------|------|------|------|--------|---|------|------|------|---|------|------|------|----|----|---|---|---|
| GVW/Tire | Base Model Curb Weight | | | GAWR | | HB | HE | HM | HR | HB | HE | HM | HR | A | B | C | D | E |
| | Frt | Rr | Ttl | Frt | Rr | | | | | | | | | | | | | |
| 1) 10,000 LT215/85R16 | 2221 | 1940 | 4161 | 4000 | 7900 | 17.9 | 29.5 | 27.0 | 28.5 | 16.6 | 20.2 | 24.6 | 22.4 | 25 | 31 | 7 | 5 | 5 |
| 2) 11,000 LT215/85R16 | 2221 | 1940 | 4161 | 4000 | 7900 | 17.9 | 29.5 | 27.0 | 28.5 | 16.7 | 20.5 | 24.5 | 22.5 | 24 | 31 | 7 | 5 | 5 |
| 2) 12,000 8R19.5 | 2380 | 2244 | 4624 | 4500 | 11,000 | 21.3 | 32.2 | 30.3 | 31.5 | 18.3 | 23.9 | 27.3 | 26.0 | 30 | 33 | 8 | 7 | 7 |
| 2) 14,100 8R19.5 | 2380 | 2244 | 4624 | 5000 | 11,000 | 21.3 | 32.2 | 30.3 | 31.5 | 17.5 | 25.2 | 26.7 | 26.5 | 30 | 32 | 9 | 8 | 8 |

NOTE: Front coil springs, torsion bars and adjusters are computer selected based on model options and calculated sprung curb weight. Actual heights may vary due to production tolerances.

- 1) Base vehicle
- 2) Optional GVWR—contain minimum equipment required

P 00042 Models with "I" Beam FK4/FK5 Front Axle



Heights (To Ground)

HB Bottom of Bumper
 HM Normal Top of Frame
 HR Top of Frame at Centerline of Rear Axle
 HE Top of Frame at End

Angle

A Ramp Breakover (Muffler)

Approach Angle(s) (Bottom of)

B Front crossmember

Departure Angle(s) (Bottom of)

C Frame
 D Fuel tank
 E Tail pipe

NOTE: All weights are in pounds, dimensions are in inches and angles are in degrees.

FRAME HEIGHTS AND RAMP ANGLE DATA

| P 30842 125.0" Wheelbase | | | | | | Frame Heights at Base Model Curb Weight | | | | Frame Heights and Angular Dimensions are shown at Maximum GAWR Front/Rear | | | | | | | | |
|----------------------------------|------------------------|------|------|------|--------|---|------|------|------|---|------|------|------|----|----|----|----|----|
| GVW/Tire | Base Model Curb Weight | | | GAWR | | HB | HE | HM | HR | HB | HE | HM | HR | A | B | C | D | E |
| | Frt | Rr | Ttl | Frt | Rr | | | | | | | | | | | | | |
| 2) 10,000 LT215/85R16 | 2198 | 1931 | 4128 | 4400 | 7900 | 18.8 | 28.6 | 27.6 | 28.2 | 15.4 | 21.9 | 24.1 | 23.6 | 23 | 29 | 20 | 11 | 13 |
| 2) 11,000 LT215/85R16 | 2198 | 1931 | 4128 | 4400 | 7900 | 18.8 | 28.6 | 27.6 | 28.2 | 15.6 | 22.6 | 24.0 | 23.6 | 22 | 29 | 20 | 12 | 14 |
| 2) 12,000 8R19.5 | 2616 | 2317 | 4933 | 5000 | 11,000 | 20.7 | 32.0 | 30.0 | 31.2 | 17.5 | 25.6 | 27.3 | 27.5 | 28 | 31 | 23 | 15 | 18 |
| 2) 14,100 8R19.5 | 2616 | 2317 | 4933 | 5000 | 11,000 | 20.7 | 32.0 | 30.0 | 31.2 | 17.8 | 27.0 | 27.1 | 27.5 | 27 | 32 | 24 | 16 | 20 |
| 2) 14,500 8R19.5 (School Bus) | 2595 | 2409 | 5004 | 5000 | 11,000 | 20.7 | 31.9 | 30.0 | 31.2 | 17.8 | 27.2 | 27.0 | 27.5 | 27 | 32 | 24 | 17 | 20 |

| P 31042 133.0" Wheelbase | | | | | | Frame Heights at Base Model Curb Weight | | | | Frame Heights and Angular Dimensions are shown at Maximum GAWR Front/Rear | | | | | | | | |
|----------------------------------|------------------------|------|------|------|--------|---|------|------|------|---|------|------|------|----|----|----|----|----|
| GVW/Tire | Base Model Curb Weight | | | GAWR | | HB | HE | HM | HR | HB | HE | HM | HR | A | B | C | D | E |
| | Frt | Rr | Ttl | Frt | Rr | | | | | | | | | | | | | |
| 2) 10,000 LT215/85R16 | 2200 | 1942 | 4143 | 4400 | 7900 | 18.8 | 28.7 | 27.6 | 28.2 | 15.4 | 21.5 | 24.1 | 23.6 | 21 | 29 | 15 | 11 | 13 |
| 2) 11,000 LT215/85R16 | 2200 | 1942 | 4143 | 4400 | 7900 | 18.8 | 28.7 | 27.6 | 28.2 | 15.6 | 22.3 | 24.0 | 23.6 | 21 | 29 | 15 | 12 | 14 |
| 2) 12,000 8R19.5 | 2621 | 2329 | 4950 | 5000 | 11,000 | 20.4 | 32.1 | 29.8 | 31.1 | 17.1 | 24.6 | 26.9 | 27.1 | 26 | 31 | 17 | 15 | 18 |
| 2) 14,100 8R19.5 | 2621 | 2329 | 4950 | 5000 | 11,000 | 20.4 | 32.1 | 29.8 | 31.1 | 17.3 | 26.4 | 26.6 | 27.1 | 26 | 32 | 19 | 16 | 20 |
| 2) 14,500 8R19.5 (School Bus) | 2573 | 2493 | 5066 | 5000 | 11,000 | 20.5 | 31.9 | 29.8 | 31.0 | 17.4 | 26.6 | 26.6 | 27.1 | 25 | 32 | 19 | 17 | 20 |

NOTE: Front coil springs, torsion bars and adjusters are computer selected based on model options and calculated sprung curb weight. Actual heights may vary due to production tolerances.

- 1) Base vehicle
- 2) Optional GVWR—contain minimum equipment required

FRAME HEIGHTS AND RAMP ANGLE DATA

| P 31442 157.0" Wheelbase | | | | | | Frame Heights at Base Model Curb Weight | | | | Frame Heights and Angular Dimensions are shown at Maximum GAWR Front/Rear | | | | | | | | |
|----------------------------------|------------------------|------|------|------|--------|---|------|------|------|---|------|------|------|----|----|----|----|----|
| GVW/Tire | Base Model Curb Weight | | | GAWR | | HB | HE | HM | HR | HB | HE | HM | HR | A | B | C | D | E |
| | Frt | Rr | Ttl | Frt | Rr | | | | | | | | | | | | | |
| 2) 10,000 LT215/85R16 | 2232 | 1956 | 4187 | 4400 | 7900 | 18.7 | 28.6 | 27.5 | 28.2 | 15.4 | 21.8 | 24.1 | 23.6 | 18 | 29 | 15 | 11 | 13 |
| 2) 11,000 LT215/85R16 | 2232 | 1956 | 4187 | 4400 | 7900 | 18.7 | 28.6 | 27.5 | 28.2 | 15.6 | 22.5 | 23.9 | 23.6 | 18 | 29 | 16 | 12 | 14 |
| 2) 12,000 8R19.5 | 2651 | 2342 | 4993 | 5000 | 11,000 | 20.4 | 32.0 | 29.7 | 31.1 | 17.2 | 25.0 | 26.8 | 27.1 | 22 | 31 | 18 | 15 | 19 |
| 2) 14,100 8R19.5 | 2651 | 2342 | 4993 | 5000 | 11,000 | 20.4 | 32.0 | 29.7 | 31.1 | 17.4 | 26.5 | 26.5 | 27.1 | 22 | 32 | 19 | 16 | 20 |
| 2) 14,500 8R19.5 (School Bus) | 2608 | 2504 | 5112 | 5000 | 11,000 | 20.5 | 31.8 | 29.7 | 31.0 | 17.4 | 26.7 | 26.5 | 27.1 | 21 | 32 | 19 | 17 | 20 |

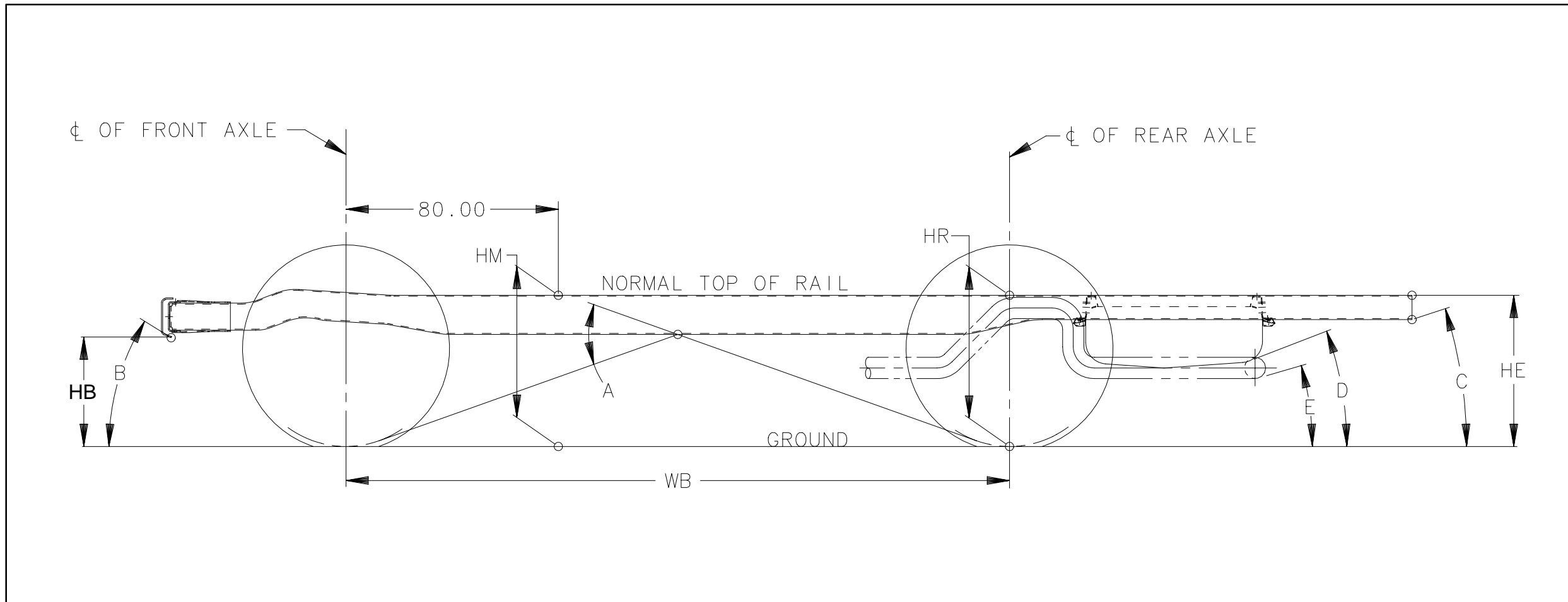
| P 31842 178.0" Wheelbase | | | | | | Frame Heights at Base Model Curb Weight | | | | Frame Heights and Angular Dimensions are shown at Maximum GAWR Front/Rear | | | | | | | | |
|--------------------------|------------------------|------|------|------|--------|---|------|------|------|---|------|------|------|----|----|---|---|---|
| GVW/Tire | Base Model Curb Weight | | | GAWR | | HB | HE | HM | HR | HB | HE | HM | HR | A | B | C | D | E |
| | Frt | Rr | Ttl | Frt | Rr | | | | | | | | | | | | | |
| 2) 10,000 LT215/85R16 | 2145 | 1940 | 4086 | 4400 | 7900 | 18.9 | 28.9 | 27.6 | 28.4 | 15.4 | 19.6 | 24.1 | 22.3 | 24 | 29 | 7 | 5 | 5 |
| 2) 11,000 LT215/85R16 | 2145 | 1940 | 4086 | 4400 | 7900 | 18.9 | 28.9 | 27.6 | 28.4 | 15.5 | 21.2 | 23.9 | 22.8 | 24 | 29 | 7 | 6 | 6 |
| 2) 12,000 8R19.5 | 2542 | 2234 | 4776 | 5000 | 11,000 | 20.4 | 33.0 | 29.8 | 31.7 | 17.0 | 22.4 | 26.8 | 25.5 | 30 | 31 | 8 | 7 | 7 |
| 2) 14,100 8R19.5 | 2542 | 2234 | 4776 | 5000 | 11,000 | 20.4 | 33.0 | 29.8 | 31.7 | 17.2 | 25.8 | 26.5 | 26.7 | 29 | 31 | 9 | 8 | 8 |

NOTE: Front coil springs, torsion bars and adjusters are computer selected based on model options and calculated sprung curb weight. Actual heights may vary due to production tolerances.

- 1) Base vehicle
- 2) Optional GVWR—contain minimum equipment required

FRAME HEIGHTS AND RAMP ANGLE DATA

P 30012 Models with "I" Beam F10/FK8 Front Axle



Heights (To Ground)

- HB Bottom of Bumper
- HM Normal Top of Frame
- HR Top of Frame at Centerline of Rear Axle
- HE Top of Frame at End

Angle

- A Ramp Breakover (Muffler)

Approach Angle(s) (Bottom of)

- B Front crossmember

Departure Angle(s) (Bottom of)

- C Frame
- D Fuel tank
- E Tail pipe

NOTE: All weights are in pounds, dimensions are in inches and angles are in degrees.

FRAME HEIGHTS AND RAMP ANGLE DATA

| P 32012 | | 208.0" Wheelbase | | | | Frame Heights at Base Model Curb Weight | | | | Frame Heights and Angular Dimensions are shown at Maximum GAWR Front/Rear | | | | | | | | |
|--------------------------|------------------------|------------------|------|------|--------|---|------|------|------|---|------|------|------|----|----|----|----|----|
| GVW/Tire | Base Model Curb Weight | | | GAWR | | HB | HE | HM | HR | HB | HE | HM | HR | A | B | C | D | E |
| | Frt | Rr | Ttl | Frt | Rr | | | | | | | | | | | | | |
| 2) 21,000 245/70R19.5 | 3419 | 3469 | 6889 | 7500 | 13,500 | 12.4 | 38.4 | 32.8 | 36.1 | 9.2 | 34.4 | 29.4 | 32.3 | 17 | 18 | 13 | 12 | 20 |
| 2) 22,500 235/80R22.5 | 3419 | 3469 | 6889 | 8000 | 14,500 | 14.7 | 40.8 | 35.1 | 38.4 | 11.1 | 36.3 | 31.3 | 34.2 | 19 | 22 | 14 | 13 | 23 |