

2004 GMT 560 T-SERIES

MODEL SYMBOL CHART	1
CHASSIS	
General Arrangement – T6/T7/T8 F042	2
General Arrangement – T8F064.....	3
Body Payload Weight Distribution – T6/T7/T8 F042	4
Body Payload Weight Distribution – T8F064.....	5
Formulas for Calculating Height Dimensions to Top of Frame – Front Axle.....	6
Formulas for Calculating Height Dimensions to Top of Frame – Rear Axle.....	7
BODY	
Cab Exterior – Front, Rear, Side Views – (Cab Tilt, Bumper, Rear Window, Step Heights, Bumper To BOC, Bumper To Air Induction – Effective CA)	8
Cab Exterior – Mirrors	9
Cab Exterior – Door Swings.....	10
Cab Interior – Seating	11
FRAME	
General Information	12
Section Modulus	12
Yield Strength.....	12
Resisting Bending Moment (RBM)	12
Frame Rail – Material and Weldability.....	13
Body Mounting Concerns.....	14
Single Axle Medium Duty Conventional	14
Strength.....	15
Frame Material Properties.....	16
Frame Lengths with Reinforcements	17
Frame Lengths with Reinforcements – Charts (042)	18

2004 GMT 560 T-SERIES

FRAME – (Continued)

Frame Lengths with Reinforcements – Charts (064)	19
Frame and Crossmember Locations (042).....	20
Frame and Crossmember Locations (064).....	21

AXLE/SUSPENSION

Front Axle Track and Suspension Drawing.....	22
Front Axle Track Charts.....	23
Front Suspension Charts	24
Rear Axle and Suspension – Drawing (042).....	25
Rear Axle and Suspension – Formulas (042)	26
Rear Axle / Suspension – Chart (042) Option Description and Bottom of Differential Bowl.....	27
Rear Axle / Wheel – Chart (042) Track Widths.....	28
Rear Axle / Suspension – Chart (042) Heights	29
Rear Axle / Suspension – Chart (042) Heights	30
Rear Axle and Suspension – Drawing (064).....	31
Rear Axle and Suspension – Formulas (064)	32
Rear Axle / Suspension – Chart (064) Option Descriptions, Bottom of Differential Bowl and Heights	33

BRAKES

Air Tank Location – (042) Truck – RQ2.....	34
Air Tank Location – (042) Tractor – RQ3.....	35
Air Tank Location – (064) Truck – RQ2.....	36
Air Tank Location – (064) Tractor – RQ3.....	37

BATTERY BOX LOCATION.....	38
---------------------------	----

FUEL TANKS

Dual 50 Gallon (opt. NJ8).....	39
Dual 53 Gallon LH and 27 Gallon RH (opt. NJ7)	40

2004 GMT 560 T-SERIES

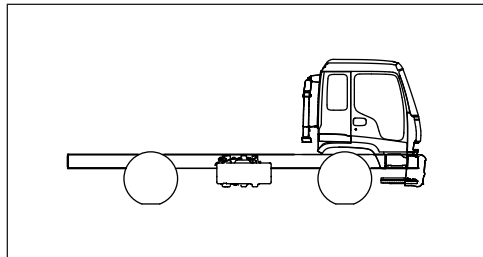
AIR INDUCTION	41
EXHAUST	42
WHEEL & TIRE INFORMATION	43
Tire Sizes and Dimensions.....	43
HUB MOUNT WHEEL OFFERINGS.....	44
Hub Mount Wheel Identification.....	44
General Motors Hub Mount Wheel Identification	44
Steel Disc & Rim Specifications.....	45
Aluminum Disc & Rim Specifications	46
Recommended Spacing of Dual Rear Wheels / Radial Tires.....	47
Size Equivalency Chart.....	47
GOODYEAR RADIAL TIRES.....	48
Tire tread name G291	48
Tire tread name G159	49
Tire tread name G169 RSA.....	50
Tire tread name G149 RSA.....	50
Tire tread name G164 RTD.....	50
Tire tread name G124	51
Tire tread name G167	52
Tire tread name G244 MSD.....	52
Tire tread name G286	53
Tire tread name G186	53
Tire tread name G177	53
Tire tread name G357	54
Tire tread name G328	54
Tire tread name Marathon LHS	54

2004 GMT 560 T-SERIES

MICHELIN RADIAL TIRES	55
Tire tread name XZE	55
Tire tread name XZA1	56
Tire tread name XZA2.....	56
Tire tread name XD2.....	56
Tire tread name XDE M/S	57
Tire tread name XDA2	58
Tire tread name XDY-2	58
Tire tread name XDA-HT	59
Tire tread name XDE A/T	59
Tire tread name XZY-2.....	60
Tire tread name XDN	60
Tire tread name XRV.....	61
BRIDGESTONE RADIAL TIRES	62
Tire tread name R250F (With Side Wall Protector Rib)	62
Tire tread name R293	62
Tire tread name R294-LP	63
Tire tread name R299-LP	63
Tire tread name M711.....	63
Tire tread name M726.....	64
Tire tread name M724.....	64
ELECTRICAL	65

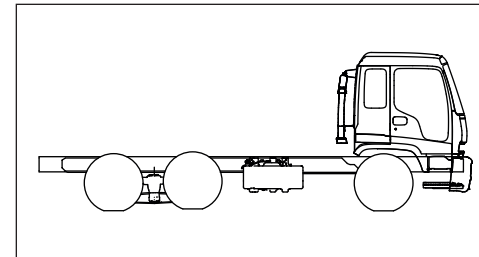
2004 GMT 560 T-SERIES

MODEL SYMBOL CHART



T Series – 2-wheel drive

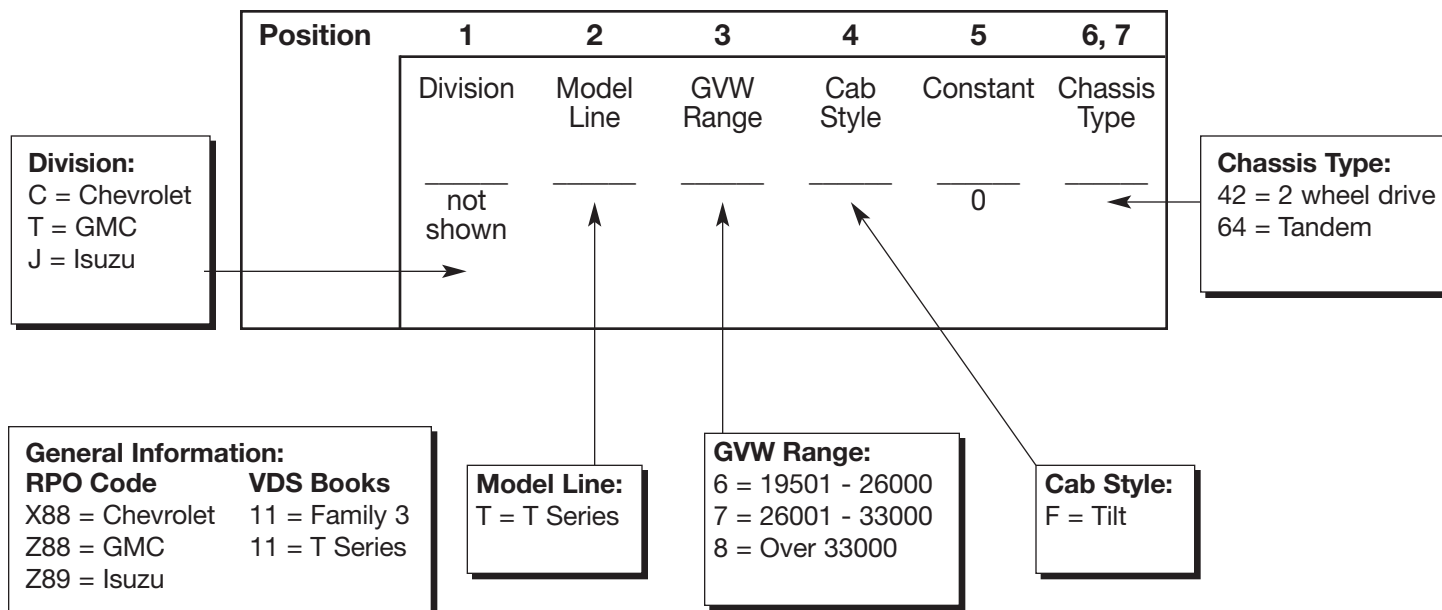
T6F042
T7F042
T8F042



T Series – Tandem

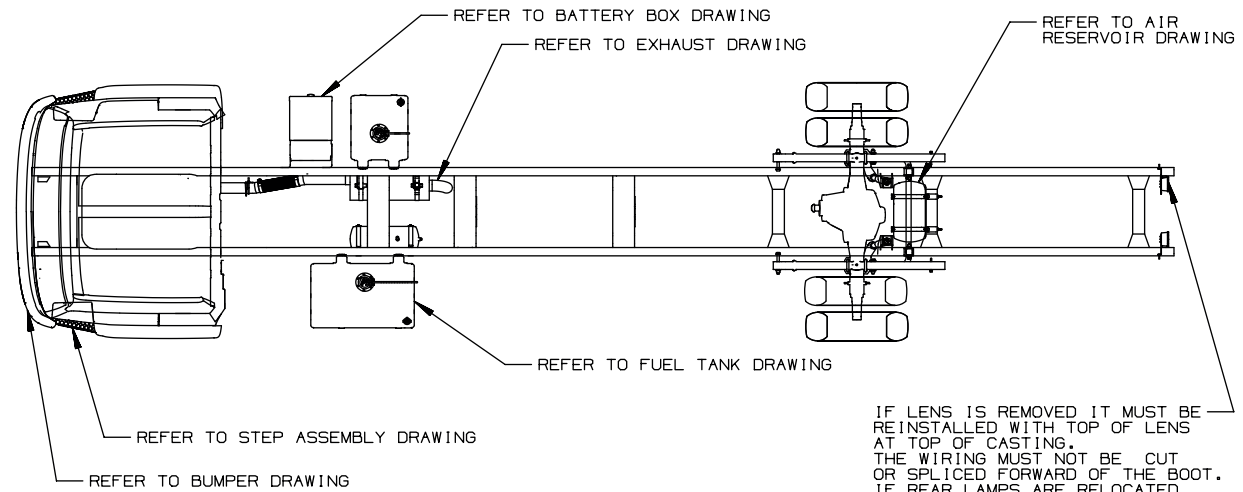
T8F064

MODEL DESIGNATOR KEY:

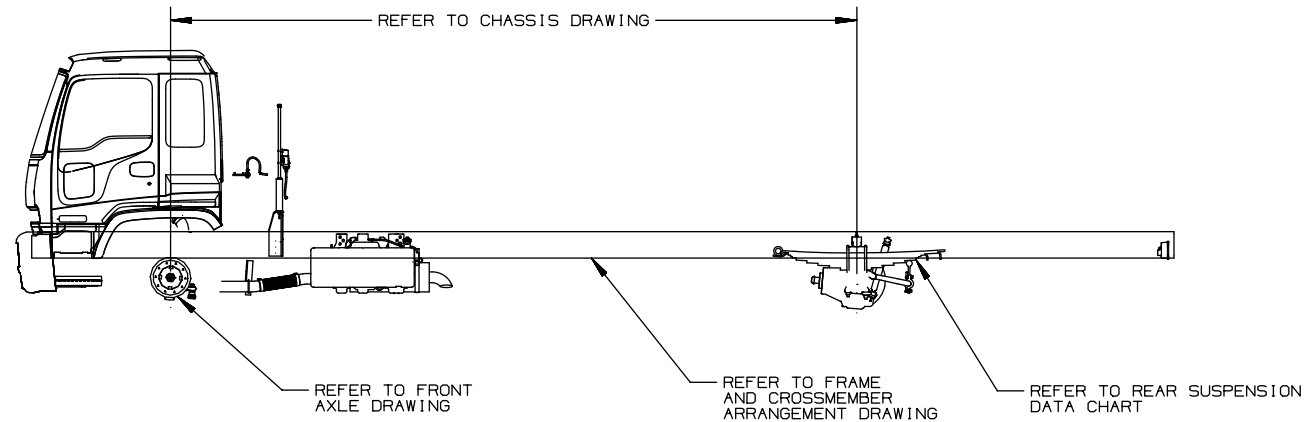


2004 GMT 560 T-SERIES

General Arrangement – T6/T7/T8 F042



IF LENS IS REMOVED IT MUST BE REINSTALLED WITH TOP OF LENS AT TOP OF CASTING. THE WIRING MUST NOT BE CUT OR SPLICED FORWARD OF THE BOOT. IF REAR LAMPS ARE RELOCATED THE NEW LAMP POSITION MUST COMPLY WITH FMVSS 108

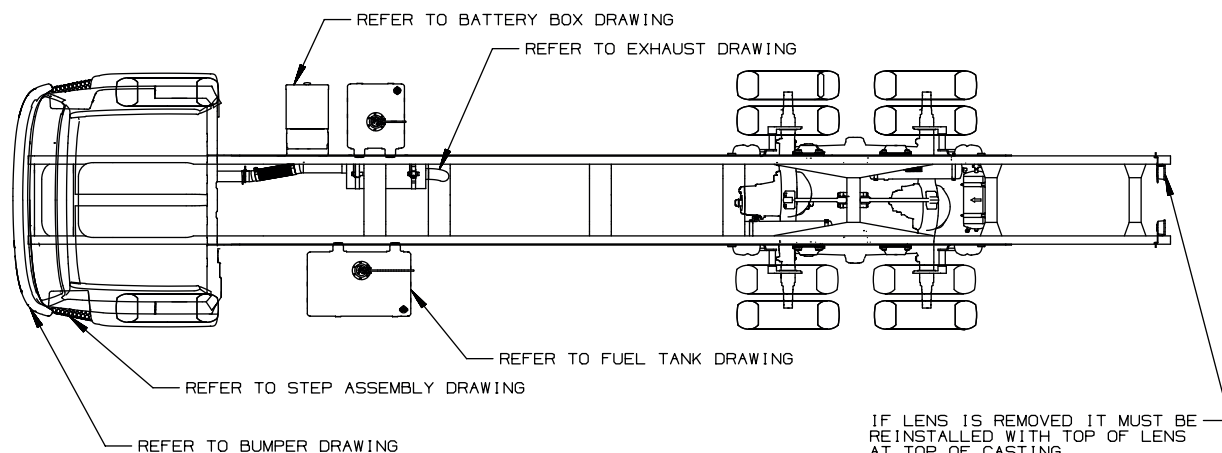


SHOWN: T8F042 COMERCIAL TRUCK
FOR: T6/7/8F042

RPO	RPO DESCRIPTION
EK7	WHEELBASE
FM0	FRONT SUSPENSION
GP1	REAR SUSPENSION
JE4	BRAKES
LG4	ENGINE
NB5	EXHAUST
NK6	FUEL TANK

TD006041A

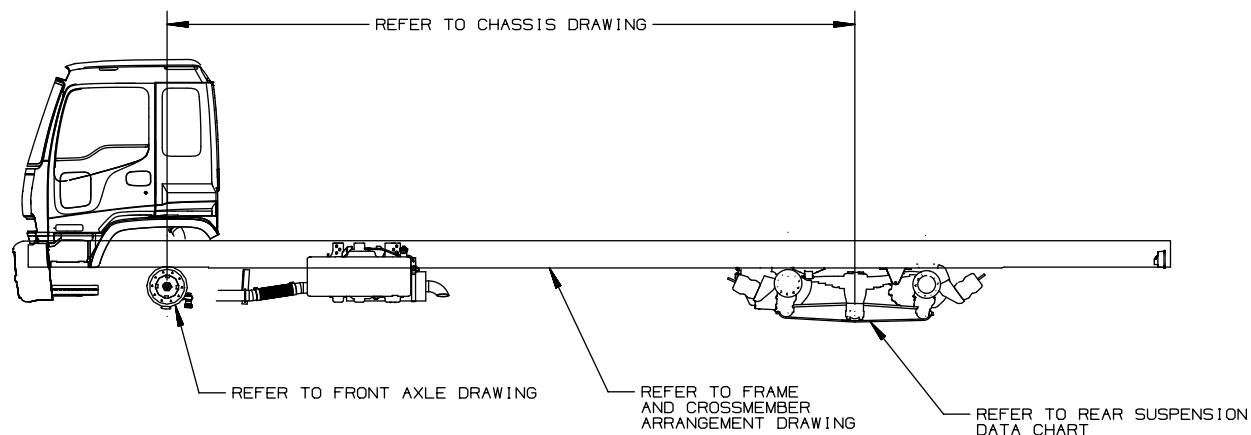
General Arrangement – T8F064



IF LENS IS REMOVED IT MUST BE REINSTALLED WITH TOP OF LENS AT TOP OF CASTING
 THE WIRING MUST NOT BE CUT OR SPLICED FORWARD OF THE BOOT
 IF REAR LAMPS ARE RELOCATED THE NEW LAMP POSITION MUST COMPLY WITH FMVSS 108

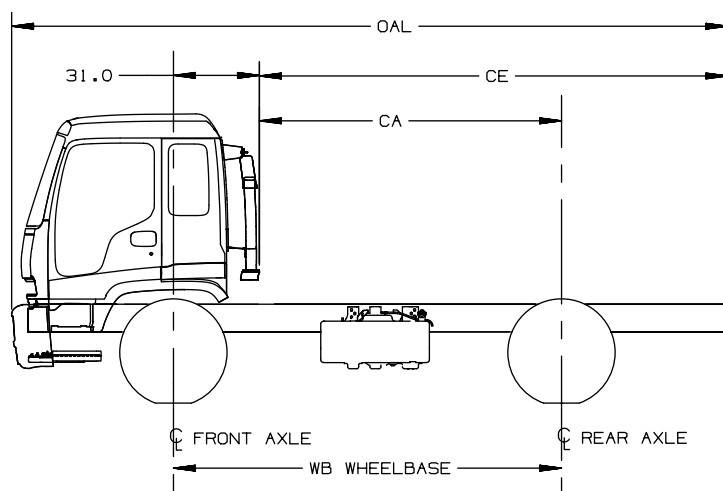
SHOWN: T8F064 COMERCIAL TRUCK
 FOR: T8F064

RPO	RPO DESCRIPTION
EK7	WHEELBASE
FM0	FRONT SUSPENSION
GNS	REAR SUSPENSION
JE4	BRAKES
LG4	ENGINE
NB5	EXHAUST
NK6	FUEL TANK



2004 GMT 560 T-SERIES

Body Payload Weight Distribution – T6/T7/T8 F042



NOTES:

* PERCENTAGES ALLOWED FOR 3" CB (CAB TO BODY CLEARANCE) AND ARE BASED ON EVEN DISTRIBUTION OF WEIGHT (FORMULA: (CA-CB-1/2BL)/WB CGA OR % FRONT AXLE)

** EFFECTIVE LENGTH IN WHICH FRONT AXLE LOAD IS 6% OR LESS IS NORMALLY POOR DISTRIBUTION

T6/7/8F042 BODY-PAYLOAD WEIGHT DISTRIBUTION (% FRONT / % REAR) *

DIMENSIONS (IN)				** BODY LENGTHS (FT)												
WHEELBASE	CA	CE	OAL	10	12	14	16	18	20	22	24	26	28	30	32	34
EC9/128	[97.0]	[150.9]	[240.2]	26/74	16/84	7/93										
FQT/140	[109.0]	[169.0]	[258.4]	32/68	24/76	15/85	6/94									
EG9/152	[121.0]	[186.9]	[276.3]		30/70	22/78	14/86	6/94								
EH8/170	[139.0]	[214.1]	[303.4]			30/70	23/77	16/84	9/91							
EK8/188	[157.0]	[241.0]	[330.4]				30/70	24/76	18/82	11/89						
EM2/200	[169.0]	[258.9]	[348.3]					29/71	22/78	17/83	10/90					
EL5/212	[181.0]	[277.1]	[366.4]					33/67	27/73	21/79	16/84	10/90				
EK6/224	[193.0]	[295.0]	[384.3]						31/69	25/75	20/80	15/85	9/91			
EG7/236	[205.0]	[313.1]	[402.5]							29/71	24/76	19/81	14/86	9/91		
ES5/248	[217.0]	[331.0]	[420.4]							33/67	28/72	23/67	18/82	13/87	8/92	
EK7/260	[229.0]	[349.1]	[438.5]								31/69	27/73	22/78	17/83	13/87	8/92

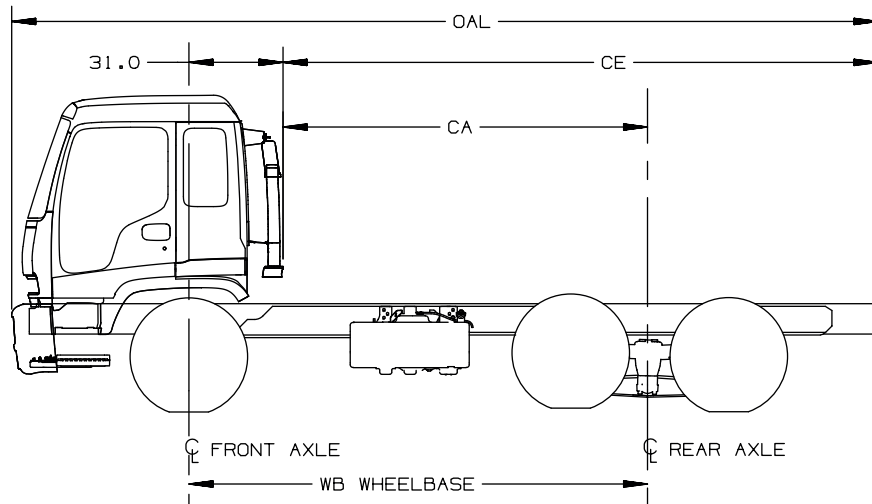
[]: INCHES

FOR: GMT560, T6/7/8F042, 2003

FOR MILLIMETER CONVERSION MULTIPLY X 25.4

2004 GMT 560 T-SERIES

Body Payload Weight Distribution – T8F064



NOTES:
 * PERCENTAGES ALLOWED FOR 3" CB (CAB TO BODY CLEARANCE) AND ARE BASED ON EVEN DISTRIBUTION OF WEIGHT (FORMULA: (CA-CB-1/2BL)/WB CGA OR % FRONT AXLE)
 ** EFFECTIVE LENGTH IN WHICH FRONT AXLE LOAD IS 6% OR LESS IS NORMALLY POOR DISTRIBUTION
 T8F064 BODY-PAYLOAD WEIGHT DISTRIBUTION (% FRONT / % REAR) *

DIMENSIONS (IN)				** BODY LENGTHS (FT)								
WHEELBASE	CA	CE	OAL	16	18	20	22	24	26	28	30	32
EG9/152	[121.0]	[195.9]	[285.3]	14/86	6/94							
EH8/170	[139.0]	[214.1]	[303.4]	23/77	16/84	9/91						
EK8/188	[157.0]	[241.0]	[330.4]	30/70	24/76	18/82	11/89					
EM2/200	[169.0]	[258.9]	[348.3]		29/71	22/78	17/83	10/90				
EL5/212	[181.0]	[277.1]	[366.4]			27/73	21/79	16/84	10/90			
EK6/224	[193.0]	[295.0]	[384.3]			31/69	25/75	20/80	15/85	9/91		
EG7/236	[205.0]	[313.1]	[402.4]				29/71	24/76	19/81	14/86	9/91	
ES5/248	[217.0]	[331.0]	[420.4]				33/67	28/72	23/77	18/82	13/87	8/92
EK7/260	[229.0]	[349.1]	[438.5]					31/69	27/73	22/78	17/83	13/87

[] = INCHES

FOR: GMT560, T8F064, 2003

FOR MILLIMETER CONVERSION MULTIPLY X 25.4

2004 GMT 560 T-SERIES

Formulas for Calculating Height Dimensions to Top of Frame – Front Axle

Sample Data:

Model	Tire	Tire Loaded Radius	LH	C	D
T7F042	275/80R22.5G (XSH) R4L/S3L (Michelin) S4L	18.6"	9.69"	7.35"	5.75"
Frame Reinforcement RPO	Wheelbase	Suspension RPO	Axle RPO		
F20	152" (EG9)	F28 (12,000 lb)	FS7 (12,000 lb)		

Formulas:

$$\begin{aligned} CH &= C + \text{Tire Static Loaded Radius} + LH & CH &= 7.35" + 18.6" + 9.69" = 35.64" \\ DH &= D + \text{Tire Static Loaded Radius} + LH & DH &= 5.75" + 18.6" + 9.69" = 34.04" \end{aligned}$$

Definitions:

- C – Centerline of axle to bottom inside of rail at curb position
- D – Centerline of axle to bottom inside of rail at design load
- LH – Distance from the bottom inside rail to the top of the rail

NOTE: See the tire data charts for the following values: Tire Model and Tire Static Loaded Radius.
For the C & D values see the Front Axle and Suspension Chart.
For the LH values see the Frame Length with Reinforcements section.

Step Height Dimensions:

When calculating step height dimensions see the step assembly location, and the frame drawings for values.

Formulas for Calculating Height Dimensions to Top of Frame – Rear Axle

Sample Data:

Model	Tire	Tire Loaded Radius	LH	C	D
T7F042	275/80R22.5G (YSH) S3H (Michelin) S4L	19.0"	9.69"	11.41"	7.94"
Frame Reinforcement RPO	Wheelbase	Suspension RPO	Axle RPO		
F20	152" (EG9)	GNB (21,000 lb)	HPN (21,000 lb)		

Formulas:

$$CH = C + \text{Tire Static Loaded Radius} + C + LH \quad CH = 19.0" + 11.41" + 9.69" = 40.11"$$

$$DH = D + \text{Tire Static Loaded Radius} + D + LH \quad DH = 19.0" + 7.94" + 9.69" = 36.63"$$

Definitions:

- C – Centerline of axle to bottom inside of rail at curb position
- D – Centerline of axle to bottom inside of rail at design load
- LH – Distance from the bottom inside rail to the top of the rail

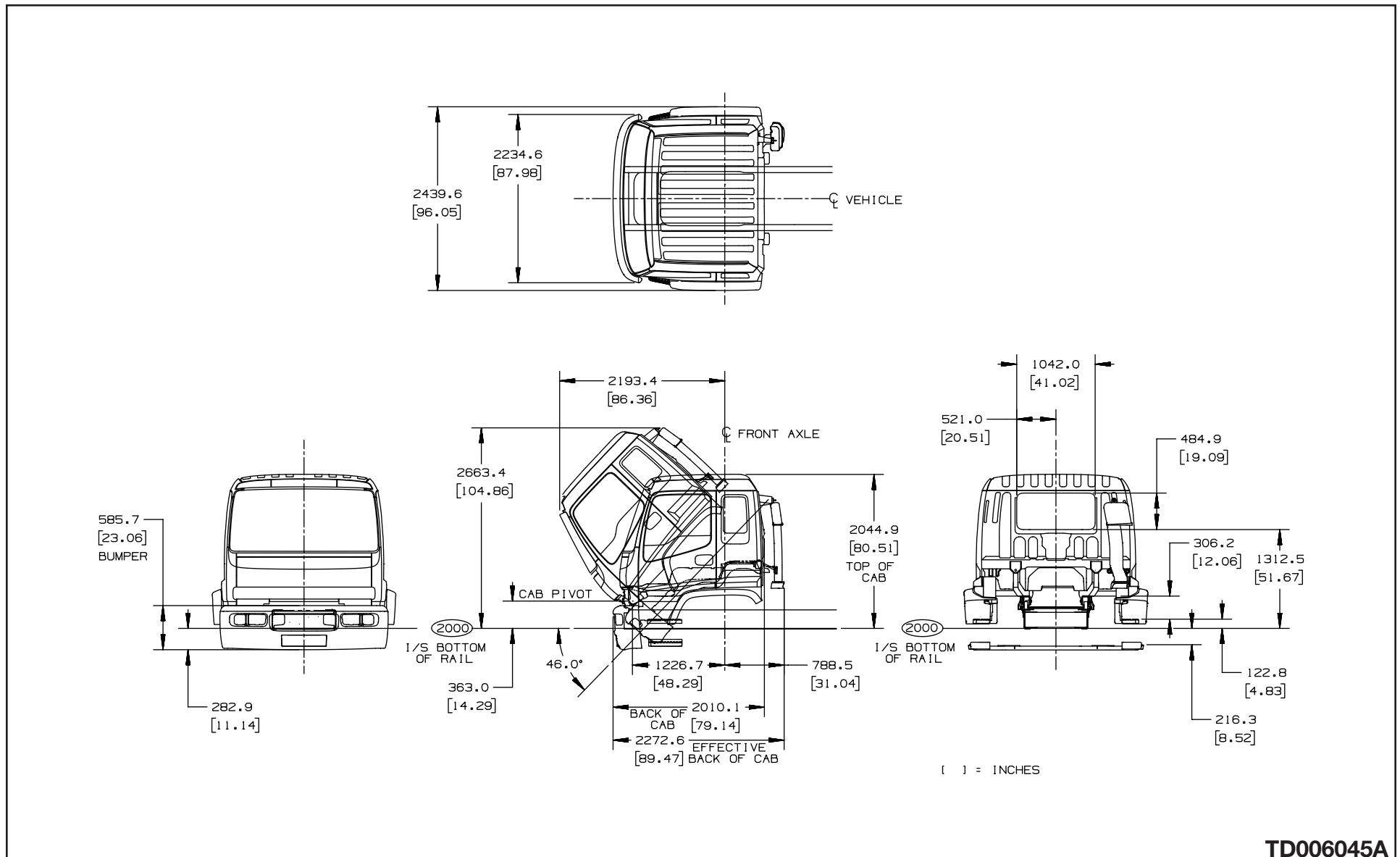
NOTE: See the tire data charts for the following values: Tire Model and Tire Static Loaded Radius.
For the C & D values see the Rear Axle and Suspension Chart.
For the LH values see the Frame Length with Reinforcements section.

Step Height Dimensions:

When calculating step height dimensions see the step assembly location, and the frame drawings for values.

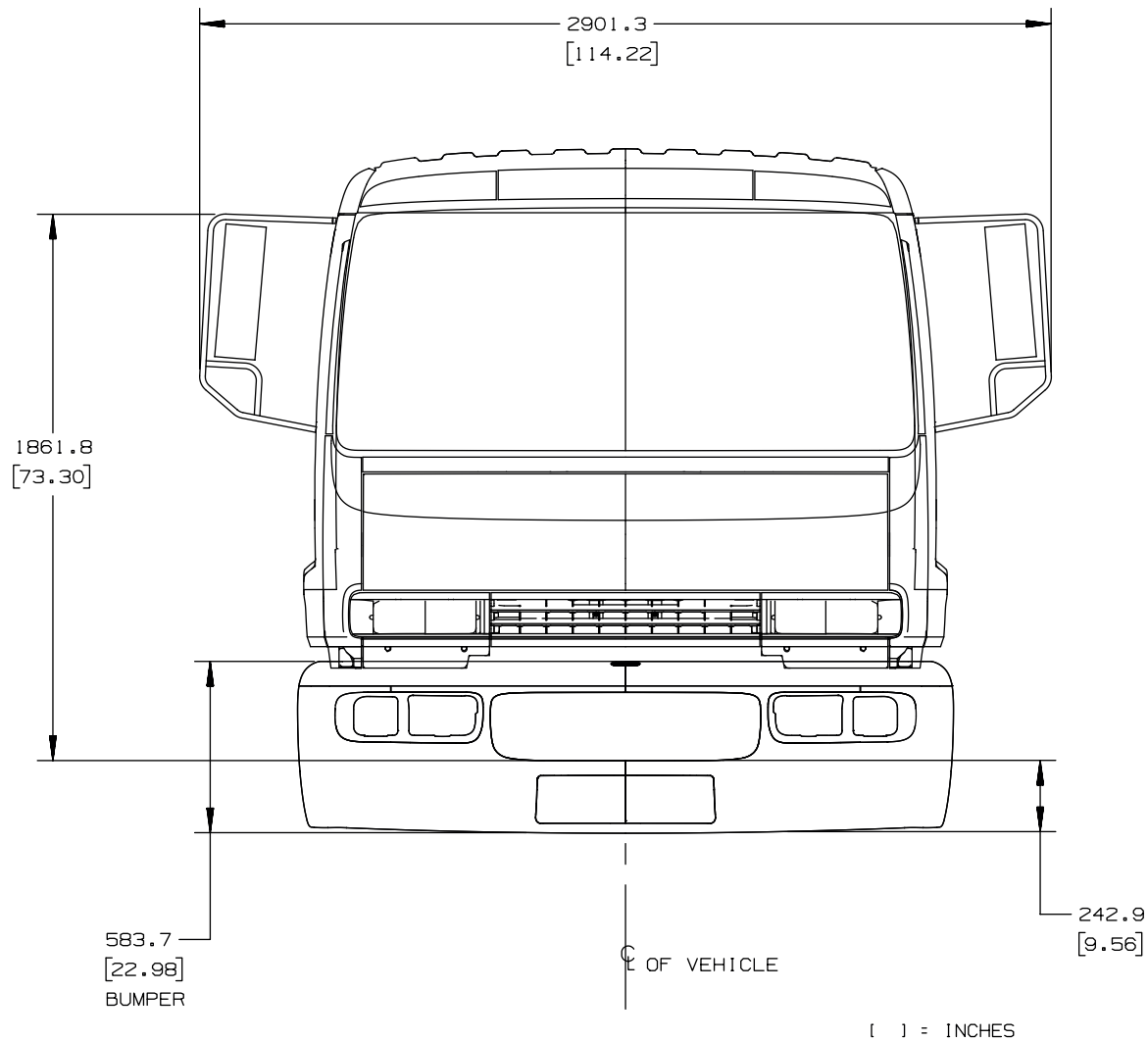
2004 GMT 560 T-SERIES

Cab Exterior – Front, Rear, Side Views – (Cab Tilt, Bumper, Rear Window, Step Heights, Bumper To BOC, Bumper To Air Induction – Effective CA)



TD006045A

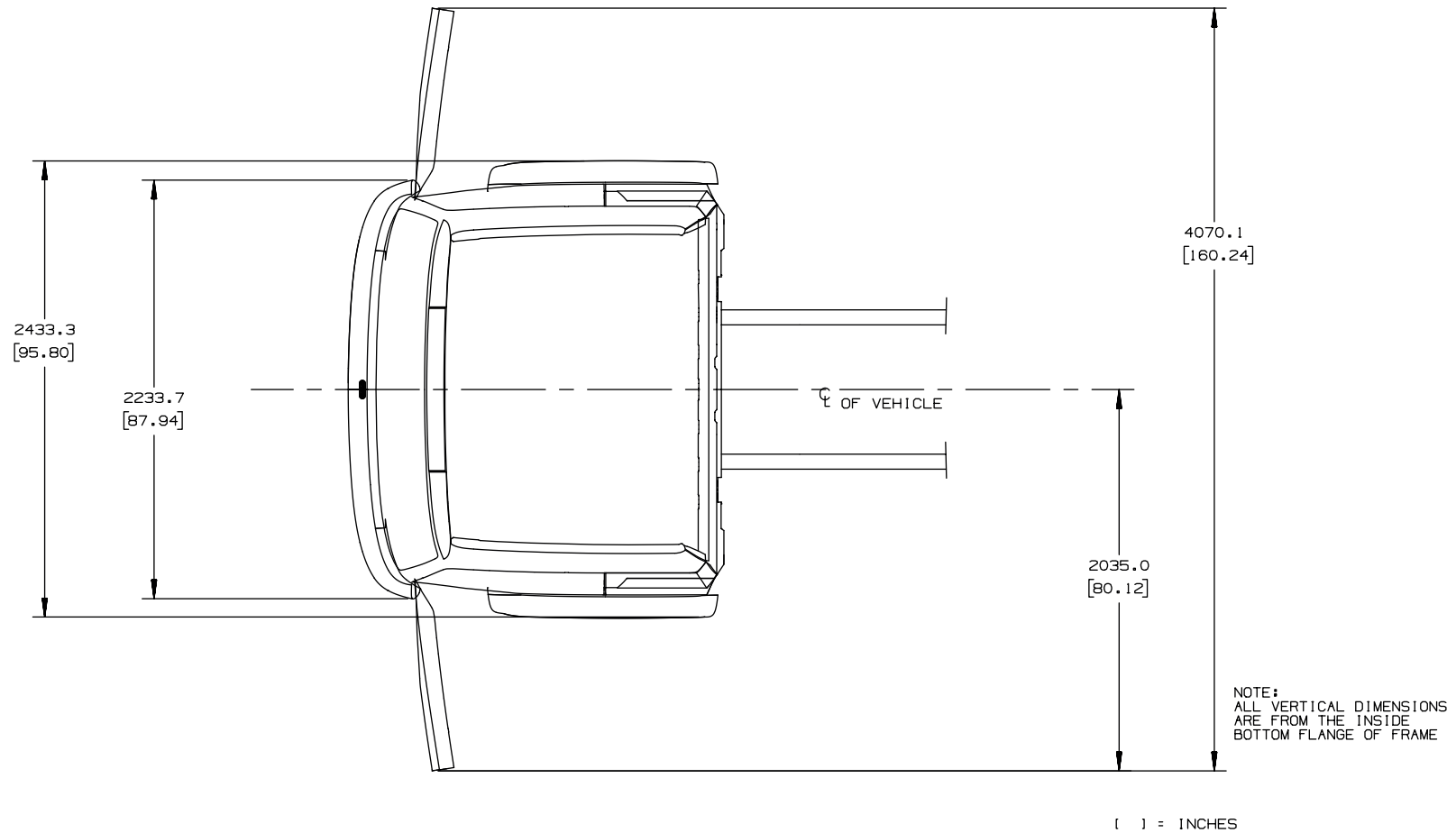
Cab Exterior – Mirrors



TD006045B

2004 GMT 560 T-SERIES

Cab Exterior – Door Swings



TD006045C

Cab Interior – Seating

**DRAWING NOT AVAILABLE
AT TIME OF PUBLICATION**

General Information

Section Modulus

- Section modulus is a measure of the frame strength based solely on the height, width, thickness, and configuration of the side rails. It is calculated at the point of maximum stress, which is usually directly behind the cab.
- Section modulus is not a measure of material strength and can only be used by itself to compare frames of like materials.
- Frame reinforcements will increase the section modulus because they increase the strength by adding to the thickness of the section.
- Consult the Frame Properties for all section modulus ratings.

Yield Strength

- Yield strength is a measurement of the frame material's strength. It is maximum load (PSI) that can be placed on the material and still have it return to its original position when the load is removed without being bent out of shape.
- It can be used only to compare frames of identical section. Two yield strength frames are available for the T-Series. They are 80,000 psi (551,600 kPa) and 110,000 psi (758,450 kPa).

RBM-Resisting Bending Moment

- Since Section Modulus can only be used to compare frames of like materials and yield strength can only indicate relative strengths of identical frames, some measurement is necessary to compare frames of different materials and different sections. The RBM, or Resisting Bending Moment, can be used for this comparison as it utilizes section modulus and yield strength in its makeup.
- **RBM = Section Modulus x Yield Strength**
- This measurement will show that a smaller section frame of higher strength steel will be just as strong as a larger section frame of lower strength of steel.
- It is readily apparent that both section modulus and yield strength are equally important so that their product, RBM, is the correct figure to use for frame comparisons. The RBMs for all standard and optional frames are shown on the Frame Properties charts.
- Frames are designed to torsional stiffness and beaming criteria as well as fatigue strength.

General Information (continued)

Frame Rail – Material and Weldability

- The frames on GM Trucks are built for strength, durability, and adaptability. They are available in tensile strengths of 80,000 psi (551,600 kPa) and 110,000 psi (758,450 kPa) ratings.
- The 80,000 psi (551,600 kPa) frames are made from hot rolled steel that is pierced and formed to produce a finished side rail. Following the procedure outlined in the GM Truck Service Manual these frames can be subjected to welding without affecting frame integrity.
- The 110,000 psi (758,450 kPa) frame rails are made from steel with an initial yield strength of 35,000-40,000 psi. The chemistry of the steel is slightly different to allow for better handling characteristic. Because the heat treating operation causes molecular movement in the steel, the only holes pierced in the side rails prior to heat treating are near the front-end hole. Growth can be predicted in this area and adjustments in hole placement can be made accordingly. The balance of the required holes are pierced in the frame rail after heat treating.
- The 110,000 psi (758,450 kPa) frame rails are heat treated by an electric induction heat treating process. During this process, the formed side rails are moved through a series of three induction coils and brought to a temperature of about 1650° F, (898.9° C). Once at this temperature, the side rail passes through a cold-water quench. After the frame goes through the cold-water quench, it is very hard but also brittle. Thus, the rails continue to roll through the final “tempering” electric coil and are brought to a temperature of about 900° F, (482.2° C). Then the frame is allowed to cool to room temperature. This tempering operation “draws” some of the hardness out of the material, but it now becomes very tough and durable. Once through the tempering operation, the side rail passes through a “shot peen” operation. This process hurls millions of 1/8-inch, (0.3175 cm), diameter spherical-shaped balls at the side rails. Shot peening significantly increases the fatigue life of the frame rail, as well as providing a clean surface.
- Welding should not be performed on the heat treated 110,000 psi (758,450 kPa) frame rails. Welding depends on heat for a good adherence. Applying heat or welding on hardened side rails will create a “soft zone” where the heat was applied. Since the heated area is now softer than the balance of the side rail, the general area would become more susceptible to failure of the frame rail.

General Information (continued)

Body Mounting Concerns

- The great variety of truck bodies and applications is difficult to appreciate. GM has tried to offer frame equipment suitable for the greatest number of configurations, but some concerns do exist. To assist sales personnel and customers, we remind everyone to review and follow data presented in:
 - TRUCK BODY BUILDER BOOK Located at gmupfitter.com
 - SERVICE MANUAL
 - OWNERS MANUAL
- Each publication contributes to an understanding of the complex issues of good vehicle / body application.
- The amount of load carried by the front axle is the most significant consideration. Front Gross Axle Weight Ratings (FGAWR) are sometimes controlled by the frame.
- The front frame limit is defined by wheelbase and frame choice for each model. The attachment method and the structural character of the body will also affect the final vehicle performance.
- Based on experience, GM has determined that **the first body mounting point should be within 12 inches or (30.5 cm) of the Back-of-Cab**. This will assure that ride, handling and load carrying ability are maintained for high customer satisfaction.

Single Axle Medium Duty Conventional

- T6500 single-axle model frames feature straight full-channel side rails over the total length of the frame. Channel type crossmembers are web mounted to leave side rail flanges clear for body mounting.
- T7500 single-axle model frames are similar to the T6500 frames.
- Optional heat-treated sidemembers (F06) are also available on T7500 truck (RQ2) models.
- “L” shaped reinforcements are available to increase the section modulus.
- Heat-treated sidemembers (F06) and “L” shaped reinforcements are standard for tractor (RQ3).
- Rear side rail taper is standard for tractor.

General Information (continued)

Strength

- The frame has a straight, full-depth, C-shaped side member rail design and a ladder-type frame assembly.
- The overall frame length on sizes similar to those previously offered has increased by about 1 inch or (2.54 cm) to accommodate a slight increase in front overhang (related to improved aerodynamics and visibility).
- Basic frame dimensions.
- The T6500-T7500 Series models (unlike the 4500-5500 Series) allow customers to select the frame strength they want and tailor it to their particular requirements.
- The (RPO F05) 8mm thick frame with 80,000 psi (551,600 kPa), strength is available on all single-axle trucks. Because of its widespread availability and strength, it has, by far, been the most popular choice, accounting for nearly 80 percent of total frame selection.
- The (RPO F06) 8mm thick frame with 110,000 psi (758,450 kPa) strength is available on all wheelbase models. It is now also the standard frame for the tandem axle models and tractor models. This provides more value (extra strength) for customers and simplifies manufacturing for GM.
- The frame crossmembers all have a 50,000 psi (344,750 kPa) material strength. Their thickness varies, depending on their application.
- Customers can also choose frame reinforcements for extra strength to meet their GVW/gross axle weight rating (GAWR) needs.
- The reinforcements can make a considerable difference in front axle loading capability. For example, if a customer selects a 224-inch (569 cm) wheelbase and (RPO F05) frame, the maximum load rating allowed on the front is 12,000 pounds (5443 kg). Adding the L-shaped frame reinforcement option increases front axle load rating 14,600 pounds (6622 kg).
- Basically, the “L” shaped reinforcement gives the 8mm-thick/80,000-psi frame a front axle load rating equal to a 8mm thick/110,000 psi (758,450 kPa) strength frame.
- The T6500-T7500 Series offer two frame reinforcements. Both have the “L” shaped (with the flange at the bottom) to fit this Series' particular design requirements. Both are also 8mm thick.
- (RPO F08) and (RPO FSA) with 80,000 psi (551,600 kPa) strength “L” shaped reinforcement on the T6500-T7500 single-axle truck models.
- (RPO F20) and (RPO FSC) which are made of heated treated material to match the heat-treated frame option.
- RPO F08 and F20 start under the cab and run to approximately the rear of the rear spring hanger.
- RPO FSA and FSC start under the cab and run to the end of the rail.

Frame Material Properties

Frame Material and Physical Properties	T6500 & T7500 Single-Axle Truck Models	T7500 Models
	Frame RPO "F05"	Frame RPO "F06"
Material Steel No. or Type	SAE J1392 (-080 XLF)	H.T. SAE 1027
Material Thickness – in. (mm)	0.32 (8)	0.32 (8)
Physical Properties: Min. Tensile or Ultimate Strength psi (kPa)	95,000 (655,000)	125,000 (861,800)
Minimum Yield Strength psi (kPa)	80,000 (551,600)	110,000 (758,400)
Resisting Bending Moment (RBM) (Rated Yield Strength x Section Modulus)	80,000 x SM	110,000 x SM
Section Modulus in ³ (cm ³)	12.69 (208)	12.69 (208)
Rated RBM	1,015,000	1,396,000
Frame Reinforcements Available		
Optional Reinforcement RPO	F08 or FSA	F20 or FSC
Reinforcement Type	"L" Shape	"L" Shape
Material Thickness – in. (mm)	0.32 (8)	0.32 (8)
Combined Section in ³ (cm ³)	24.23 (397)	24.23 (397)
Rated Combined RBM	1,938,000	2,665,000

* Grade 80 is rated equivalent to Heat Treated SAE 1027

**SECTION MODULUS BASED ON Square C-Channel. (Actual parts contain radius)

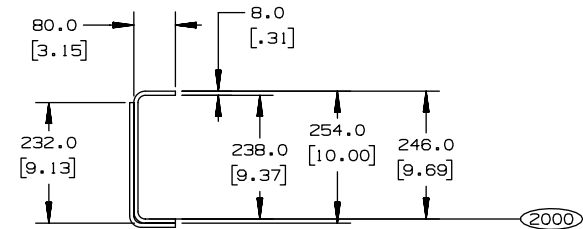
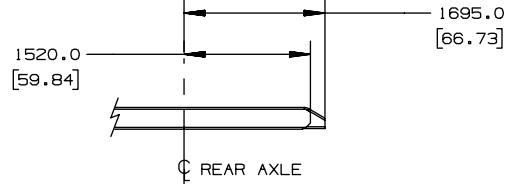
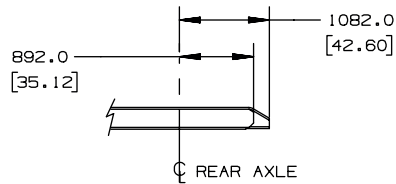
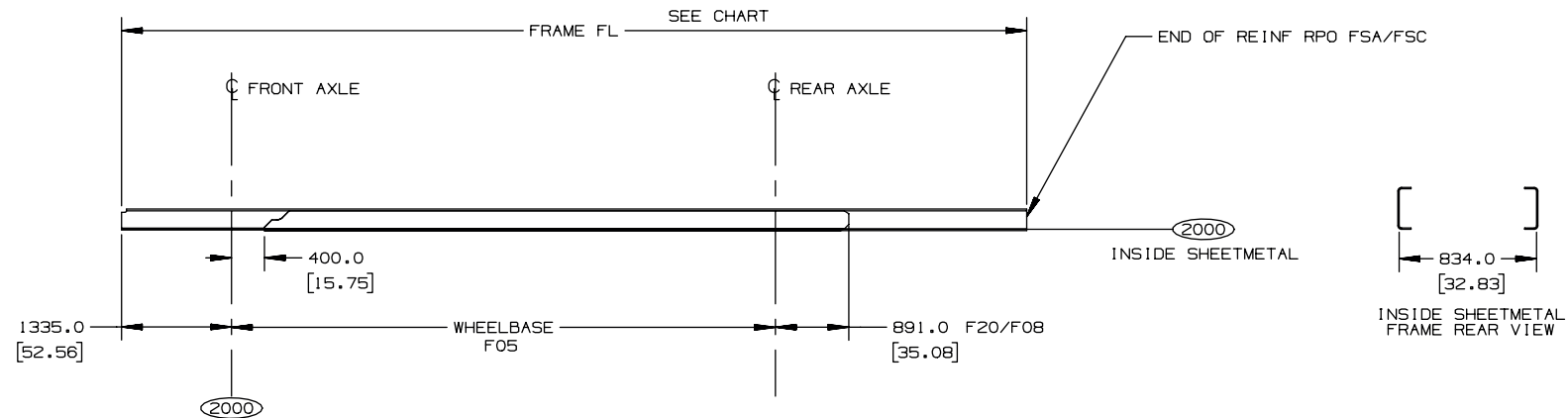
110K Heat Treated Versus 80K HSLA

GM Truck is the only major OEM to offer 80K HSLA material on all T-Series.

This offering is based on fatigue testing which shows equivalency to heat treated steel.

Frames fail in fatigue, not yield, and therefore the materials are equivalent with respect to service life.

Frame Lengths with Reinforcements



SECTION A-A
 REINFORCEMENT RPOS F20/FSC/F08/FSA
 WHEELBASE EK7
 T6F042 T7F042 T8F064
 ALL REINFORCEMENT THICKNESS ARE 8.0MM
 ALL FRAME THICKNESS ARE 8.0MM

[] = INCHES

Frame Lengths with Reinforcements – Charts (042)

MODEL	WHEELBASE	FRAME	FRAME REINF	FRAME FL W/RQ2	FRAME FL W/RQ3
T6F042 T7F042 T8F042	EC9 128	F05	F08/FSA	5955.0 (234.4)	————
		F05	F20/FSC	5955.0 (234.4)	5665.0 (223.0)
	FQT 140	F05	F08/FSA	6415.0 (252.6)	————
		F05	FSC	6415.0 (252.6)	————
		F05	F20	6415.0 (252.6)	5970.0 (235.0)
	EG9 152	F05	F08/FSA	6870.0 (270.5)	————
		F05	FSC	6870.0 (270.5)	————
		F05	F20	6870.0 (270.5)	6275.0 (247.0)
	EHB 170	F05	F08/FSA	7560.0 (297.6)	————
		F05	FSC	7560.0 (297.6)	————
		F05	F20	7560.0 (297.6)	6735.0 (265.2)
	EKB 188	F05	F08/FSA	8245.0 (324.6)	————
		F05	F20/FSC	8245.0 (324.6)	————
	EM2 200	F05	F08/FSA	8700.0 (342.5)	————
		F05	F20/FSC	8700.0 (342.5)	————
	EL5 212	F05	F08/FSA	9160.0 (360.6)	————
		F05	F20/FSC	9160.0 (360.6)	————

MODEL	WHEELBASE	FRAME	FRAME REINF	FRAME FL W/RQ2	FRAME FL W/RQ3
T6F042 T7F042 T8F042	EK6 224	F05	F08/FSA	9615.0 (378.5)	————
		F05	F20/FSC	9615.0 (378.5)	————
	EG7 236	F05	F08/FSA	10075.0 (396.7)	————
		F05	F20/FSC	10075.0 (396.7)	————
	ES5 248	F05	F08/FSA	10530.0 (414.6)	————
		F05	F20/FSC	10530.0 (414.6)	————
	EK7 260	F05	F08/FSA	10990.0 (432.7)	————
		F05	F20/FSC	10990.0 (432.7)	————

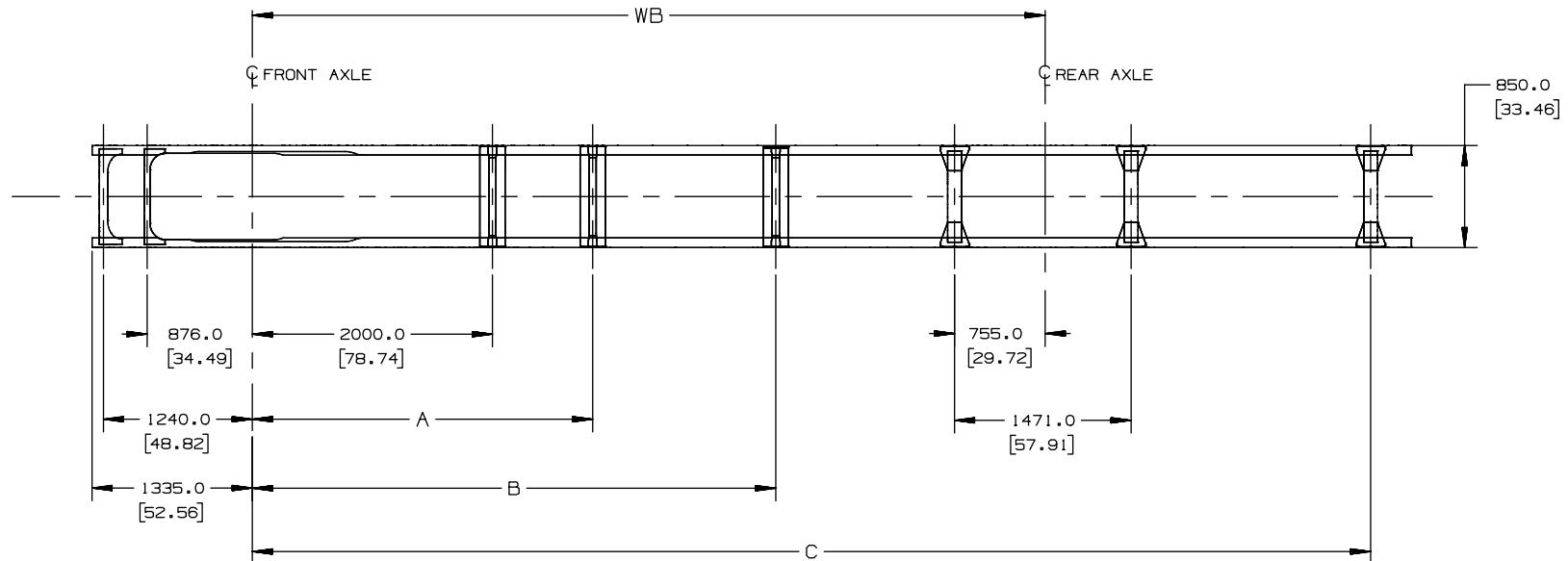
() = INCHES

Frame Lengths with Reinforcements – Charts (064)

MODEL	WHEELBASE	FRAME	FRAME REINF	FRAME FL W/RQ2	FRAME FL W/RQ3
T8F064	EG9 152	F05	F20	7100.0 (279.5)	6890.0 (271.3)
		F05	F3C	————	6890.0 (271.3)
	EH8 170	F05	F20/F3C	7560.0 (297.6)	7350.0 (289.4)
	EK8 188	F05	F08/F3C	8245.0 (324.6)	7805.0 (307.3)
	EM2 200	F05	F20	8700.0 (342.5)	8110.0 (319.3)
		F05	F3C	————	8110.0 (319.3)
	EL5 212	F05	F20/F3C	9160.0 (360.6)	————
	EK6 224	F05	F20/F3C	9615.0 (378.5)	————
	EG7 236	F05	F20/F3C	10075.0 (396.7)	————
	ES5 248	F05	F20/F3C	10530.0 (414.6)	————
EK7 260	F05	F20/F3C	10990.0 (432.7)	————	

[] = INCHES

Frame and Crossmember Locations (042)



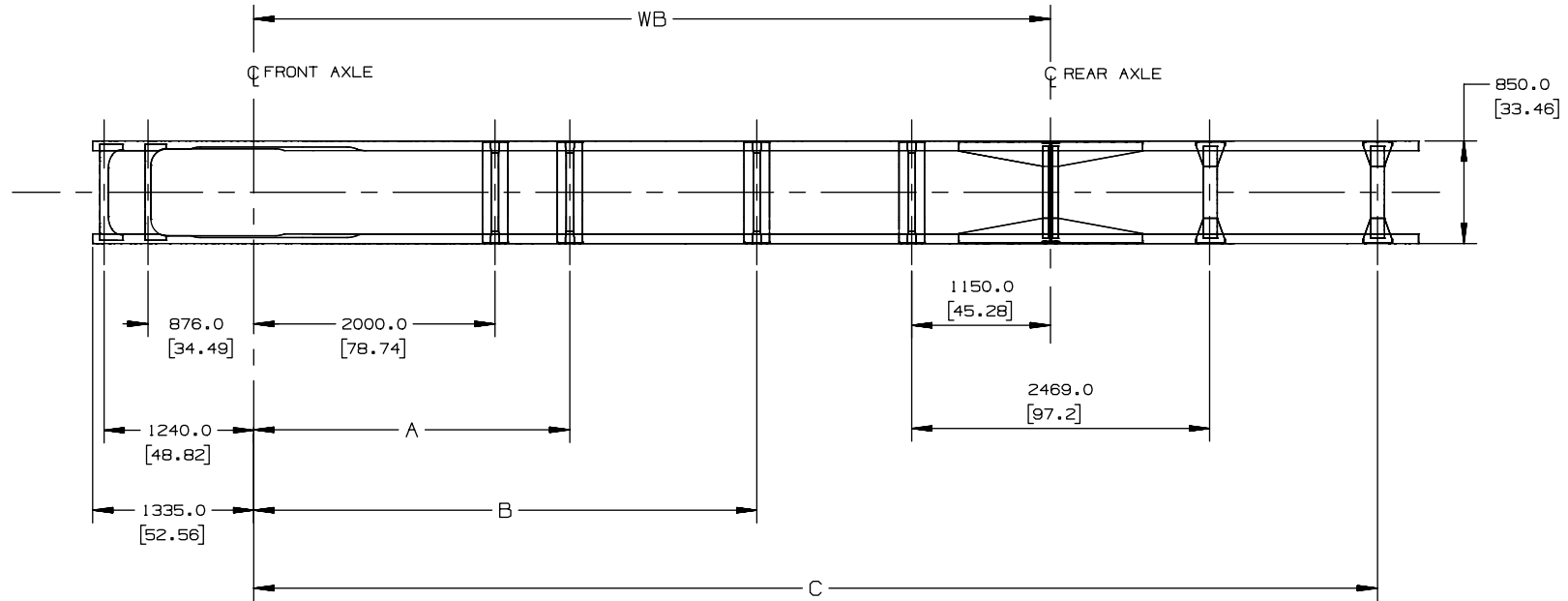
T600/700/800-042 CROSSMEMBER CHART											
W/B	EC9 128	FQT 140	EG9 152	EH8 170	EK8 188	EM2 200	EL5 212	EK6 224	EG7 236	ES5 248	EK7 260
A	-	-	2580.0 (101.5)	2620.0 (103.1)	2620.0 (103.1)	2835.0 (111.6)	2620.0 (103.1)	2620.0 (103.1)	2620.0 (103.1)	2620.0 (103.1)	2835.0 (111.6)
B	-	-	-	-	-	-	3680.0 (144.8)	3680.0 (144.8)	4170.0 (164.1)	4170.0 (164.1)	4360.0 (171.6)
C	-	-	-	5885.0 (231.7)	6570.0 (258.6)	7025.0 (276.5)	74850.0 (294.7)	7940.0 (312.5)	8400.0 (330.7)	8855.0 (348.6)	9315.0 (368.7)

T600/700/800-042

RPO EK7, SHOWN

[] = INCHES

Frame and Crossmember Locations (064)

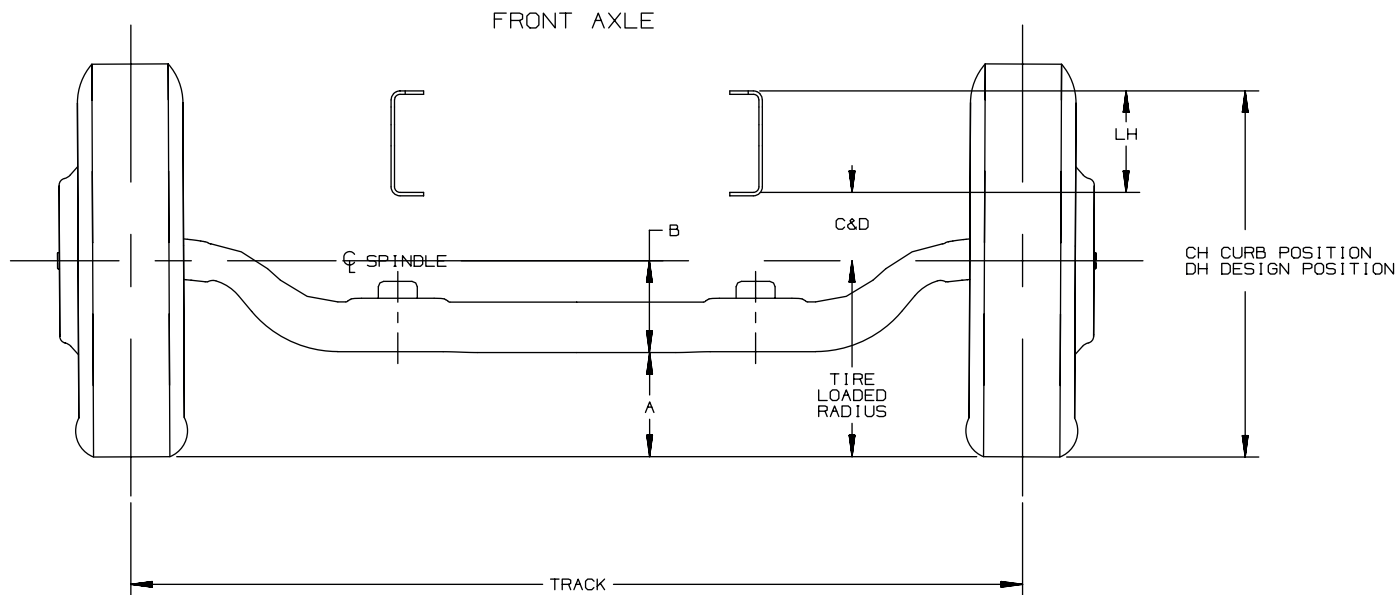


T800-064 CROSSMEMBER CHART									
W/B	EG9 152	EH8 170	EK8 188	EM2 200	EL5 212	EK6 224	EG7 236	ES5 248	EK7 260
A	-	-	2620.0 (103.1)	2620.0 (103.1)	TBD	2835.0 (111.6)	2620.0 (103.1)	2620.0 (103.1)	2620.0 (103.1)
B	-	-	-	-	TBD	-	3680.0 (144.8)	3680.0 (144.8)	4170.0 (164.1)
C	-	-	-	-	TBD	7940.0 (312.5)	8400.0 (330.7)	8855.0 (348.6)	9315.0 (366.7)

T800-064
RPO EK7, SHOWN

[] = INCHES

Front Axle Track and Suspension Drawing



LEGEND:

- A = TIRE LOADED RADIUS - B
- B = CENTERLINE OF AXLE TO BOTTOM OF BEAM
- C = CENTERLINE OF AXLE TO BOTTOM INSIDE OF RAIL AT CURB POSITION
- D = CENTERLINE OF AXLE TO BOTTOM INSIDE OF RAIL AT DESIGN LOAD
- CH = C + TIRE LOADED RADIUS + LH
- DH = D + TIRE LOADED RADIUS + LH
- LH = INSIDE BOTTOM OF FRAME TO TOP OF FRAME
SEE FRAME DRAWING TD005882
- TRACK = WHEEL OFFSET AT SPINDLE
TRACK AT GROUND WILL VARY WITH CAMBER ANGLE AND TIRE/WHEEL COMBINATION

FRONT AXLE TRACK/SUSPENSION CHARTS
GMT560, T6/7/8F042/064, 2003

[] = INCHES

TD006059A

Front Axle Track Charts

FRONT AXLE TRACK WIDTH									
				AXLE & BRAKE RPO					
				FL3	FH4	FM6/FS7	FM6	FS7	FS7
WHEEL TYPE	WHEEL RPO	WHEEL SIZE (IN INCHES)	WHEEL OFFSET	JE4 (AIR)	JE4	JE3 (HYD)	JE4 W/JRR*	JE4 W/JRR*	JE4
DISC	QB2	19.50 X 6.75	143.8 [5.66]	—	—	TBD	—	—	—
DISC	RPM	19.50 X 6.75	141.0 [5.55]	—	—	TBD	—	—	—
DISC	QH3	22.50 X 7.50	163.6 [6.44]	2099.2 [82.65]	—	2090.6 [82.31]	2099.1 [82.64]	2099.1 [82.64]	2099.5 [82.66]
DISC	RPQ	22.50 X 8.25	168.3 [6.62]	2093.3 [82.41]	2029.9 [79.92]	2083.8 [82.04]	2092.1 [82.37]	2092.1 [82.37]	2093.3 [82.41]
DISC	RNH	22.50 X 8.25	167.4 [6.59]	2120.1 [83.47]	—	2111.5 [83.13]	2119.9 [83.46]	2119.9 [83.46]	2120.1 [83.47]
DISC	QH8	22.50 X 9.00	146.1 [5.75]	2140.6 [84.28]	2072.8 [81.61]	—	—	—	—
DISC	RNP	24.50 X 8.25	168.2 [6.62]	—	1996.5 [78.60]	—	—	TBD	TBD

*JRR = BRAKE RATING FRT AIR ABEX 197, NON-ASBESTOS LINING, 5.5 IN SLACK 15 X 4, FAB. SHOE & 4 OR 8

FRONT AXLE TRACK/SUSPENSION CHARTS
GMT560, T6/7/8F042/064, 2003

[] = INCHES

Front Suspension Charts

FRONT AXLE SUSPENSION DIMENSIONS

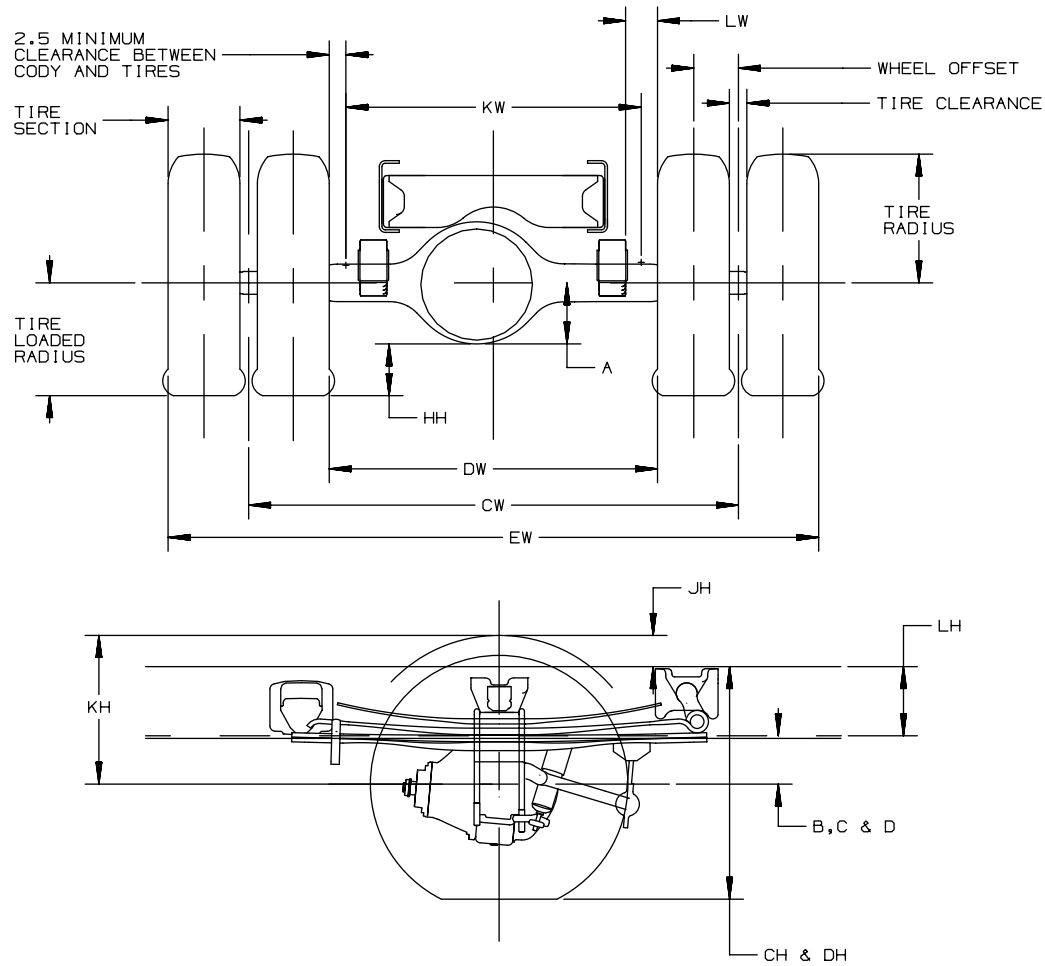
SUSPENSION RPO	AXLE RPO	VEHICLE MODELS				-B-	-C-		-D-	
		T6F042	T7F042	T8F042	T8F064		BASE	W/F59*	BASE	W/F59*
F26 12,000 LB 5,450 KG TAPERED LEAF	FM6 10,000 LB 4,536 KG	*	*			214.9 [8.46]	166.7 [6.56]	212.4 [8.36]	141.2 [5.56]	174.5 [6.87]
	FS7 12,000 LB 5,450 KG	*	*	*		214.9 [8.46]	186.7 [7.35]	232.3 [9.15]	146.0 [5.75]	171.6 [6.76]
	FL3 14,600 LB 6,625 KG		*	*		237.6 [9.35]	186.7 [7.35]	232.3 [9.15]	146.0 [5.75]	171.6 [6.76]
FM0 14,575 LB 6,610 KG MULTILEAF	FS7 12,000 LB 5,450 KG		*	*		214.9 [8.46]	208.8 [8.22]	208.8 [8.22]	169.7 [6.68]	169.7 [6.68]
	FL3 14,600 LB 6,625 KG		*	*	*	237.6 [9.35]	228.8 [9.01]	228.8 [9.01]	173.8 [6.84]	173.8 [6.84]
	FH4 16,000 LB 7,258 KG			*	*	226.4 [8.91]	234.9 [9.25]	N/A	179.9 [7.08]	N/A
FM3 10,000 LB 4,536 KG TAPERED LEAF	FM6 10,000 LB 4,536 KG	*	*			214.9 [8.46]	180.4 [7.10]	216.4 [8.52]	149.6 [5.89]	168.3 [6.63]
	FS7 12,000 LB 5,450 KG	*				214.9 [8.46]	180.4 [7.10]	216.4 [8.52]	149.6 [5.89]	168.3 [6.63]
FM1 18,000 LB 8,165 KG MULTILEAF	FH4 16,000 LB 7,258 KG			*	*	226.4 [8.91]	247.7 [9.75]	N/A	196.6 [7.74]	N/A

*F59 = STABILIZER SHAFT FRONT

FRONT AXLE TRACK/SUSPENSION CHARTS
GMT560, T6/7/8F042/064, 2003

[] = INCHES

Rear Axle and Suspension – Drawing (042)



FOR: 2003, GMT560, T6/7/8F042

[] = INCHES

TD006060A

Rear Axle and Suspension – Formulas (042)

DEFINITIONS:

- A - CENTERLINE OF AXLE TO BOTTOM OF AXLE BOWL
- B - CENTERLINE OF REAR AXLE TO BOTTOM INSIDE RAIL AT METAL TO METAL POSITION
- C - CENTERLINE OF AXLE TO BOTTOM INSIDE RAIL AT CENTERLINE OF EQUALIZER BEAM AT CURB POSITION
- D - CENTERLINE OF AXLE TO BOTTOM INSIDE RAIL AT CENTERLINE OF EQUALIZER BEAM AT DESIGN POSITION
- CH - REAR FRAME HEIGHT
DISTANCE BETWEEN THE TOP OUTSIDE RAIL AND THE GROUND-LINE THROUGH THE VERTICAL CENTERLINE OF THE REAR AXLE AT CURB POSITION
- DH - REAR FRAME HEIGHT
DISTANCE BETWEEN THE TOP OUTSIDE RAIL AND THE GROUND-LINE THROUGH THE VERTICAL CENTERLINE OF THE REAR AXLE AT DESIGN POSITION
- HH - REAR AXLE CLEARANCE
MINIMUM CLEARANCE BETWEEN THE REAR AXLE AND THE GROUND-LINE
- JH - REAR TIRE CLEARANCE
MINIMUM CLEARANCE REQUIRED FOR TIRES AND CHAINS MEASURED FROM THE TOP OF THE FRAME AT THE VERTICAL CENTERLINE OF THE REAR AXLE
- KH - CHAIN CLEARANCE
- LH - DISTANCE FROM THE BOTTOM INSIDE RAIL TO THE TOP OF THE RAIL
- CW - TRACK DUAL WHEEL VEHICLES
DISTANCE BETWEEN THE CENTERLINES OF THE DUAL WHEELS AS MEASURED AT THE GROUND-LINE
- DW - MINIMUM DISTANCE BETWEEN THE INNER SURFACES OF THE REAR TIRES
- EW - MAXIMUM REAR WIDTH
OVER-ALL WIDTH OF VEHICLE MEASURED AT THE OUTER MOST SURFACE OF THE REAR TIRES
- HW - DUAL TIRE SPACING
DISTANCE BETWEEN THE CENTERLINES OF THE TIRES IN A SET OF DUAL TIRES
- KW - REAR BODY WIDTH
MAXIMUM BODY WIDTH BETWEEN REAR TIRES

SEE TIRE CHART FOR VALUES: TIRE SELECTION, TIRE RADIUS
TIRE LOADED RADIUS AND TIRE CLEARANCE

FORMULAS FOR CALCULATING REAR WIDTH AND HEIGHT DIMENSIONS:

- CH = TIRE LOADED RADIUS + C + LH
- DH = TIRE LOADED RADIUS + D + LH
- HH = TIRE LOADED RADIUS - A
- JH = KH - B - LH
- KH = TIRES RADIUS + 3.00 INCHES
- CW = TRACK
- DW = TRACK - 1 TIRE SECTION - HW
- EW = TRACK + 1 TIRE SECTION + HW
- KW = DW - 5.00 INCHES
- LW = 1.00 INCHES MINIMUM CLEARANCE BETWEEN TIRES AND SPRINGS

NOTE: TRACK AND OVERALL WIDTH MAY VARY WITH OPTIONAL EQUIPMENT

FOR: 2003, GMT560, T6/7/8F042

[] = INCHES

2004 GMT 560 T-SERIES

Rear Axle / Suspension – Chart (042) Option Description and Bottom of Differential Bowl

REAR SUSPENSIONS		
RPO	CAPACITY	TYPE OF SPRING
G60	15,000 LB (6,800 KG)	MULTILEAF
GNO	19,000 LB (8,620 KG)	MULTILEAF
GN2	19,000 LB (8,620 KG)	TAPERED LEAF
GN8	21,000 LB (9,525 KG)	MULTILEAF
GP1	23,500 LB (10,660 KG)	MULTILEAF
GQ0	15,000 LB (6,800 KG)	TAPERED LEAF
G40	19,000 LB (8,618 KG)	AIR
G45	23,000 LB (10,430 KG)	AIR

REAR AXLES						BRAKES
RPO	CAPACITY	MANUFACTURER & NUMBER		SPEED	DIM "A"	RPO
HNB	23,000 LB (10,430 KG)	EATON	23105D	SINGLE	273.0 [10.75]	JE4
HPK	19,000 LB (8,618 KG)	EATON	19060S	SINGLE	229.7 [9.04]	JE3/JE4
HPL	19,000 LB (8,618 KG)	EATON	19060D	SINGLE	229.7 [9.04]	JE3/JE4
HPM	19,000 LB (8,618 KG)	EATON	19060T	TWO	257.0 [10.12]	JE3/JE4
HPN	21,000 LB (9,527 KG)	EATON	21060D	SINGLE	229.7 [9.04]	JE3/JE4
HPP	21,000 LB (9,527 KG)	EATON	21060S	SINGLE	229.7 [9.04]	JE3/JE4
HPT	21,000 LB (9,527 KG)	EATON	23090S	SINGLE	259.8 [10.23]	JE4
H08	15,000 LB (6,804 KG)	DANA	S150-S	SINGLE	214.4 [8.44]	JE3
H15	21,000 LB (9,526 KG)	EATON	21060T	TWO	257.0 [10.12]	JE3/JE4

FOR: 2003, GMT560, T6/7/8F042

[] = INCHES

Rear Axle / Wheel – Chart (042) Track Widths

REAR AXLE TRACK DIMENSIONS

JE3 HYDRAULIC BRAKE

AXLES	WHEELS	TRACK*
H08 15K, DANA S150-S SINGLE SPEED	Q83 RPW QH4 RNN	1854.8 1854.8 1847.8 1847.8
HPK 19K, EATON 19060S SINGLE SPEED HPL 19K, EATON 19060D SINGLE SPEED HPM 19K, EATON 19060T TWO SPEED	Q83 RPW QH4 RNN RPR	1906.6 1906.6 1818.0 1821.0 1821.0
HPN 21K, EATON 21060D SINGLE SPEED HPP 21K, EATON 21060S SINGLE SPEED H15 21K, EATON 21060T TWO SPEED	QH4 RNN RPR	1862.7 1865.9 1865.9

JE4 AIR BRAKE

AXLES	WHEELS	TRACK*
HPK 19K, EATON 19060S SINGLE SPEED		
HPL 19K, EATON 19060D SINGLE SPEED HPM 19K, EATON 19060T TWO SPEED	QH4 RNN RPR	1827.2 1830.3 1830.3
HPN 21K, EATON 21060D SINGLE SPEED HPP 21K, EATON 21060S SINGLE SPEED H15 21K, EATON 21060T TWO SPEED	QH4 RNN RPR	1829.7 1832.9 1832.9
HNB 23K, EATON 23105D SINGLE SPEED HPT 23K, EATON 23090S SINGLE SPEED	QH4 RNN RPR	1831.9 1835.1 1835.1

*TO DETERMINE MEASUREMENT IN INCHES, DIVIDE BY 25.4

LEGEND:

- QH4 WHEEL REAR 22.5" X 7.5", 10 HOLE
- Q83 WHEEL REAR 19.5" X 6.75", 8 HOLE
- RNN WHEEL REAR 22.5" X 8.25", 10 HOLE
- RPR WHEEL REAR 22.5" X 8.25", 10 HOLE
- RPW WHEEL REAR 19.5" X 6.75", 8 HOLE

TRACK DIMENSIONS FOR: 2003, GMT560, T6/7/8F042

[] = INCHES

2004 GMT 560 T-SERIES

Rear Axle / Suspension – Chart (042) Heights

SUSPENSION RPO	AXLE RPO	VEHICLE MODELS			- A -	- B -		- C -		- D -	
		T6F042	T7F042	T8F042		BASE	W/G60	BASE	W/G60	BASE	W/G60
GGO 15,000LB MULTILEAF	HOB 15,000LB DANA S150-S SINGLE SPEED	*			215.8 (8.50)	112.7 (4.44)	N/A	323.3 (12.73)	N/A	196.0 (7.72)	N/A
GNO 19,000LB MULTILEAF	HOB 15,000LB DANA S150-S SINGLE SPEED	*			214.4 (8.44)	148.6 (5.85)	156.8 (6.17)	311.1 (12.25)	307.8 (12.12)	242.5 (9.55)	242.5 (9.55)
	HPK 19,000LB EATON 19060S SINGLE SPEED	*	*		229.7 (9.04)						
	HPL 19,000LB EATON 19060D SINGLE SPEED		*			129.1 (5.08)	129.4 (5.09)	278.4 (10.96)	278.4 (10.96)	197.3 (7.77)	202.9 (7.99)
GN2 19,000LB TAPERED LEAF	HPM 19,000LB EATON 19060T TWO SPEED	*	*		257.00 (10.12)						
	HPK 19,000LB EATON 19060S SINGLE SPEED		*		229.7 (9.04)						
	HPL 19,000LB EATON 19060D SINGLE SPEED		*			117.4 (4.62)	118.3 (4.66)	275.1 (10.83)	276.0 (10.87)	185.5 (7.30)	195.3 (7.69)
GNB 21,000LB MULTILEAF	HPM 19,000LB EATON 19060T TWO SPEED		*		257.0 (10.12)						
	HPK 19,000LB EATON 19060S SINGLE SPEED		*		229.7 (9.04)						
	HPL 19,000LB EATON 19060D SINGLE SPEED		*			131.9 (5.19)	131.9 (5.19)	289.7 (11.41)	289.7 (11.41)	204.7 (8.06)	212.8 (8.38)
	HPM 19,000LB EATON 19060T TWO SPEED		*		257.0 (10.12)						
	HPN 21,000LB EATON 21060D SINGLE SPEED		*	*	229.7 (9.04)						
	HPP 21,000LB EATON 21060S SINGLE SPEED		*	*		131.9 (5.19)	131.9 (5.19)	289.7 (11.41)	289.7 (11.41)	201.6 (7.94)	207.8 (8.18)
	H15 21,000LB EATON 21060T TWO SPEED		*	*	257.0 (10.12)						

SUSPENSION CHART FOR GMT560 T6/7/BF 042, 2003

2004 GMT 560 T-SERIES

Rear Axle / Suspension – Chart (042) Heights

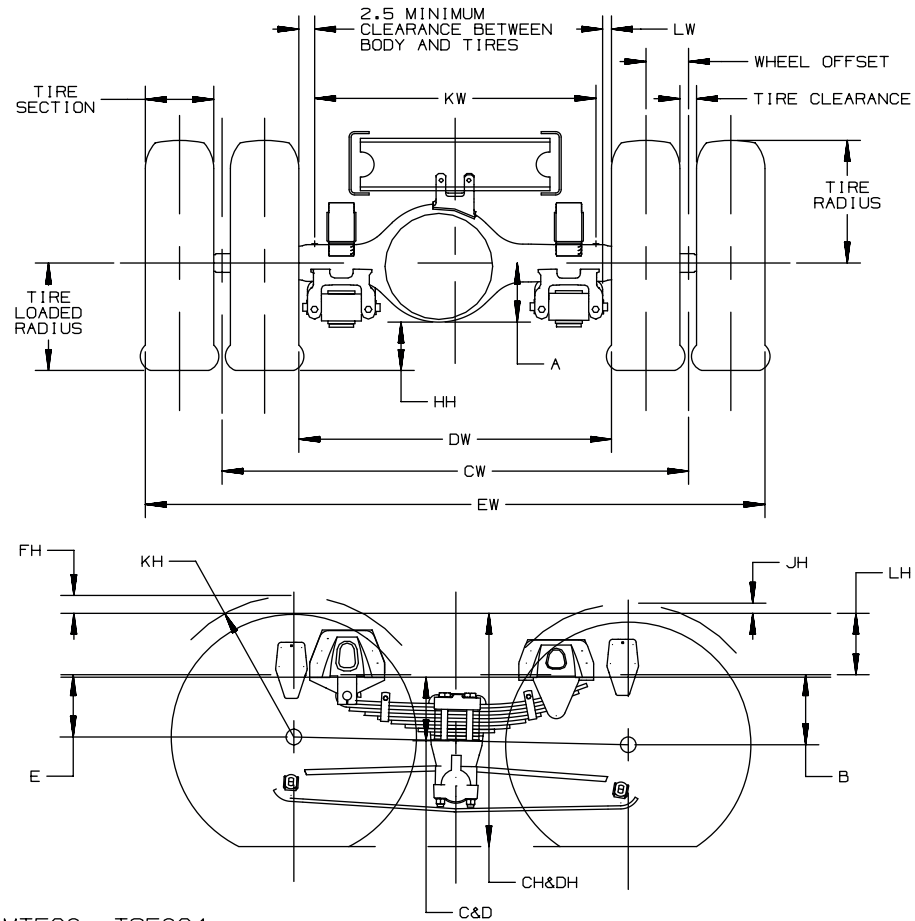
SUSPENSION RPO	AXLE RPO	VEHICLE MODELS			- A -	- B -		- C -		- D -	
		T6/042	T7/042	T8/042		BASE	W/G60	BASE	W/G60	BASE	W/G60
GP1 23,500LB MULTILEAF	HPK 19,000LB EATON 19060S SINGLE SPEED		*		229.7 (9.04)	152.7 (6.01)	152.7 (6.01)	312.6 (12.31)	312.6 (12.31)	234.9 (9.25)	238.4 (9.39)
	HPL 19,000LB EATON 19060D SINGLE SPEED		*								
	HPM 19,000LB EATON 19060T TWO SPEED		*		257.0 (10.12)						
	HPN 21,000LB EATON 21060D SINGLE SPEED		*	*	229.74 (9.04)	152.7 (6.01)	152.7 (6.01)	316.8 (12.47)	316.8 (12.47)	229.7 (9.04)	233.9 (9.21)
	HPP 21,000LB EATON 21060S SINGLE SPEED		*	*							
	H15 21,000LB EATON 21060T TWO SPEED		*	*	257.0 (10.12)	152.7 (6.01)	152.7 (6.01)	312.6 (12.31)	312.6 (12.31)	224.5 (8.84)	229.4 (9.03)
	HPT 23,000LB EATON 23060S SINGLE SPEED		*	*	259.8 (10.23)						
	HNB 23,000LB EATON 23105D SINGLE SPEED		*	*	279.0 (10.75)						
G00 15,000LB TAPERED LEAF	H08 15,000LB DANA S150-S SINGLE SPEED	*			214.4 (8.44)	98.3 (3.87)	N/A	254.3 (10.01)	N/A	170.0 (6.69)	N/A
G40 19,000LB AIR	HPK 19,000LB EATON 19060S SINGLE SPEED	*	*		229.7 (9.04)	133.9 (5.27)	N/A	211.5 (8.33)	N/A	211.5 (8.33)	N/A
	HPM 19,000LB EATON 19060T TWO SPEED	*	*		257.0 (10.12)						
G45 23,000LB AIR	HNB 23,000LB EATON 23105D SINGLE SPEED		*	*	279.0 (10.75)	164.9 (6.49)	N/A	227.8 (8.97)	N/A	227.8 (8.97)	N/A
	HPT 23,000LB EATON 23060S SINGLE SPEED		*	*	259.8 (10.23)						

SUSPENSION CHART FOR GMT560 T6/7/8F 042, 2003

()=INCHES

Rear Axle and Suspension – Drawing (064)

MEDIUM DUTY T SERIES
T8F064 TANDEM AXLE CHART



FOR: 2003, GMT560, T8F064

[] = INCHES

Rear Axle and Suspension – Formulas (064)

DEFINITIONS:

- A - CENTERLINE OF AXLE TO BOTTOM OF AXLE BOWL
- B - CENTERLINE OF REAR AXLE TO BOTTOM INSIDE RAIL AT METAL TO METAL POSITION
- C - CENTERLINE OF AXLE TO BOTTOM INSIDE RAIL AT CENTERLINE OF EQUALIZER BEAM AT CURB POSITION
- D - CENTERLINE OF AXLE TO BOTTOM INSIDE RAIL AT CENTERLINE OF EQUALIZER BEAM AT DESIGN POSITION
- E - CENTERLINE OF FRONT AXLE TO BOTTOM INSIDE RAIL AT METAL TO METAL POSITION
- CH - REAR FRAME HEIGHT
DISTANCE BETWEEN THE TOP OUTSIDE RAIL AND THE GROUND-LINE THROUGH THE VERTICAL CENTERLINE OF THE REAR AXLE AT CURB POSITION
- DH - REAR FRAME HEIGHT
DISTANCE BETWEEN THE TOP OUTSIDE RAIL AND THE GROUND-LINE THROUGH THE VERTICAL CENTERLINE OF THE REAR AXLE AT DESIGN POSITION
- HH - REAR AXLE CLEARANCE
MINIMUM CLEARANCE BETWEEN THE REAR AXLE AND THE GROUND-LINE
- JH - REAR TIRE CLEARANCE
MINIMUM CLEARANCE REQUIRED FOR TIRES AND CHAINS MEASURED FROM THE TOP OF THE FRAME AT THE VERTICAL CENTERLINE OF THE REAR AXLE
- KH - CHAIN CLEARANCE
- LH - DISTANCE FROM THE BOTTOM INSIDE RAIL TO THE TOP OF THE RAIL
- CW - TRACK DUAL WHEEL VEHICLES
DISTANCE BETWEEN THE CENTERLINES OF THE DUAL WHEELS AS MEASURED AT THE GROUND-LINE
- DW - MINIMUM DISTANCE BETWEEN THE INNER SURFACES OF THE REAR TIRES
- EW - MAXIMUM REAR WIDTH
OVER-ALL WIDTH OF VEHICLE MEASURED AT THE OUTER MOST SURFACE OF THE REAR TIRES
- HW - DUAL TIRE SPACING
DISTANCE BETWEEN THE CENTERLINES OF THE TIRES IN A SET OF DUAL TIRES
- KW - REAR BODY WIDTH
MAXIMUM BODY WIDTH BETWEEN REAR TIRES

SEE TIRE CHART FOR VALUES: TIRE SELECTION, TIRE RADIUS
TIRE LOADED RADIUS AND TIRE CLEARANCE

FORMULAS FOR CALCULATING REAR WIDTH AND HEIGHT DIMENSIONS:

- CH = TIRE LOADED RADIUS + C + LH
- DH = TIRE LOADED RADIUS + D + LH
- FH = KH - E - LH
- HH = TIRE LOADED RADIUS - A
- JH = KH - B - LH
- KH = TIRES RADIUS + 3.00 INCHES
- CW = TRACK
- DW = TRACK - 1 TIRE SECTION - HW
- EW = TRACK + 1 TIRE SECTION + HW
- KW = DW - 5.00 INCHES
- LW = 1.00 INCHES MINIMUM CLEARANCE BETWEEN TIRES AND SPRINGS

NOTE: TRACK AND OVERALL WIDTH MAY VARY WITH OPTIONAL EQUIPMENT

Rear Axle / Suspension – Chart (064) Option Descriptions, Bottom of Differential Bowl and Heights

T8F064 TANDEM AXLE CHART, REAR SUSPENSION DIMENSIONS

TANDEM REAR AXLE					
RPO	CAPACITY	MFG. & NO.		SPEED	DIM "A"
HPE	40,000 LBS	EATON	DS404	SINGLE	229.7 [9.04]

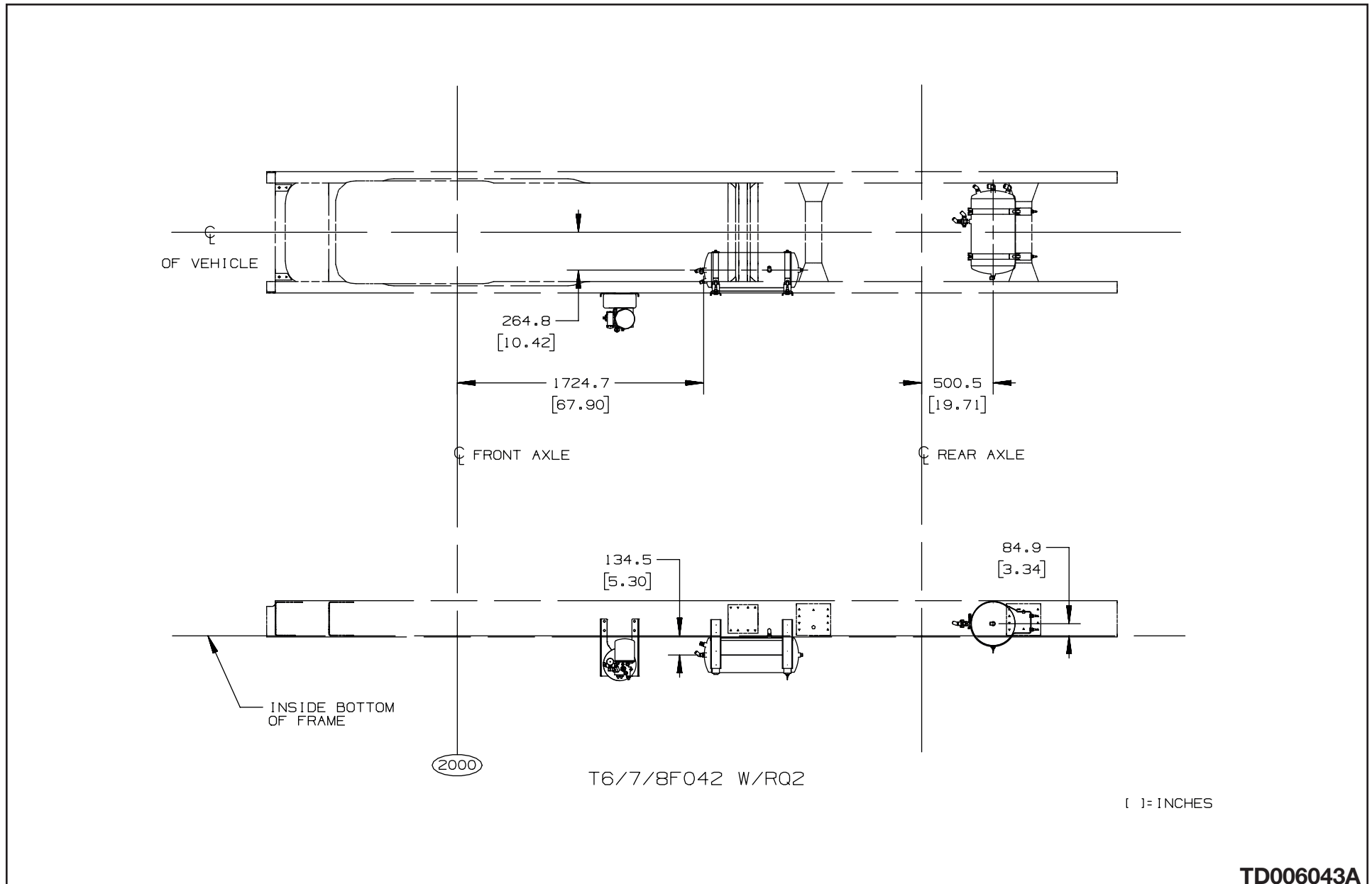
TANDEM REAR SUSPENSIONS					
RPO	CAPACITY	MFG. & NO.		BUSHING	BEAMS
GNS	40,000 LBS	HENDRICKSON	RT400	RUBBER	52 INCH
GPR	40,000 LBS	HENDRICKSON	RTE400	BRONZE	52 INCH

AXLE		SUSPENSION		FRAME	DIMENSIONS			
RPO	CAPACITY	RPO	CAPACITY	RPO	B	C	D	E
HPE	40,000 LBS (18,144 Kg)	GNS	40,000 LBS (18,144 Kg)	F06	151.8 [5.98]	296.4 [11.67]	264.5 [10.41]	185.5 [7.30]
		GPR	40,000 LBS (18,144 Kg)		168.9 [6.65]	290.7 [11.44]	261.2 [10.28]	185.7 [7.31]

FOR: 2003, GMT560, T8F064

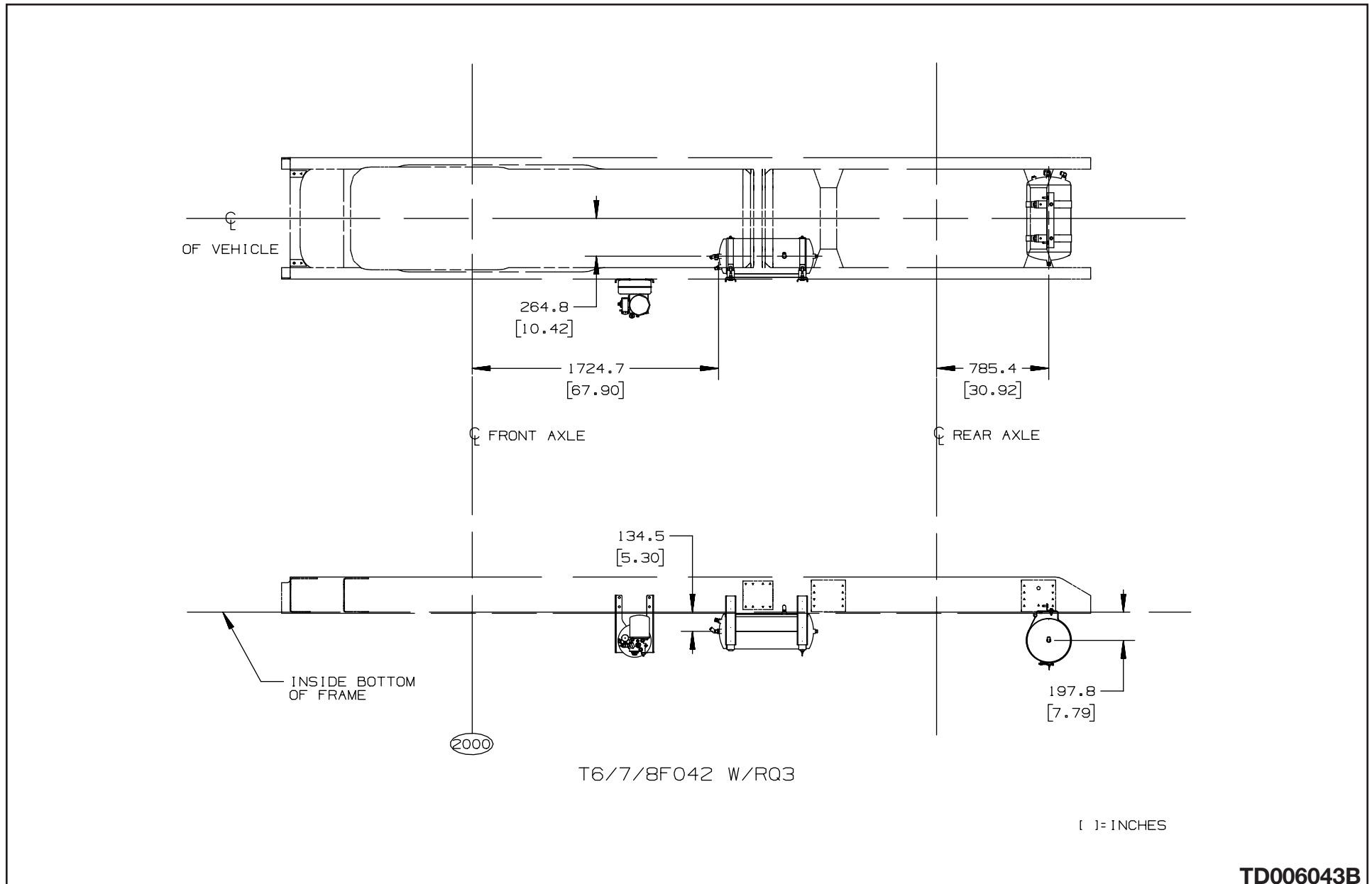
[] = INCHES

Air Tank Location - (042) Truck - RQ2



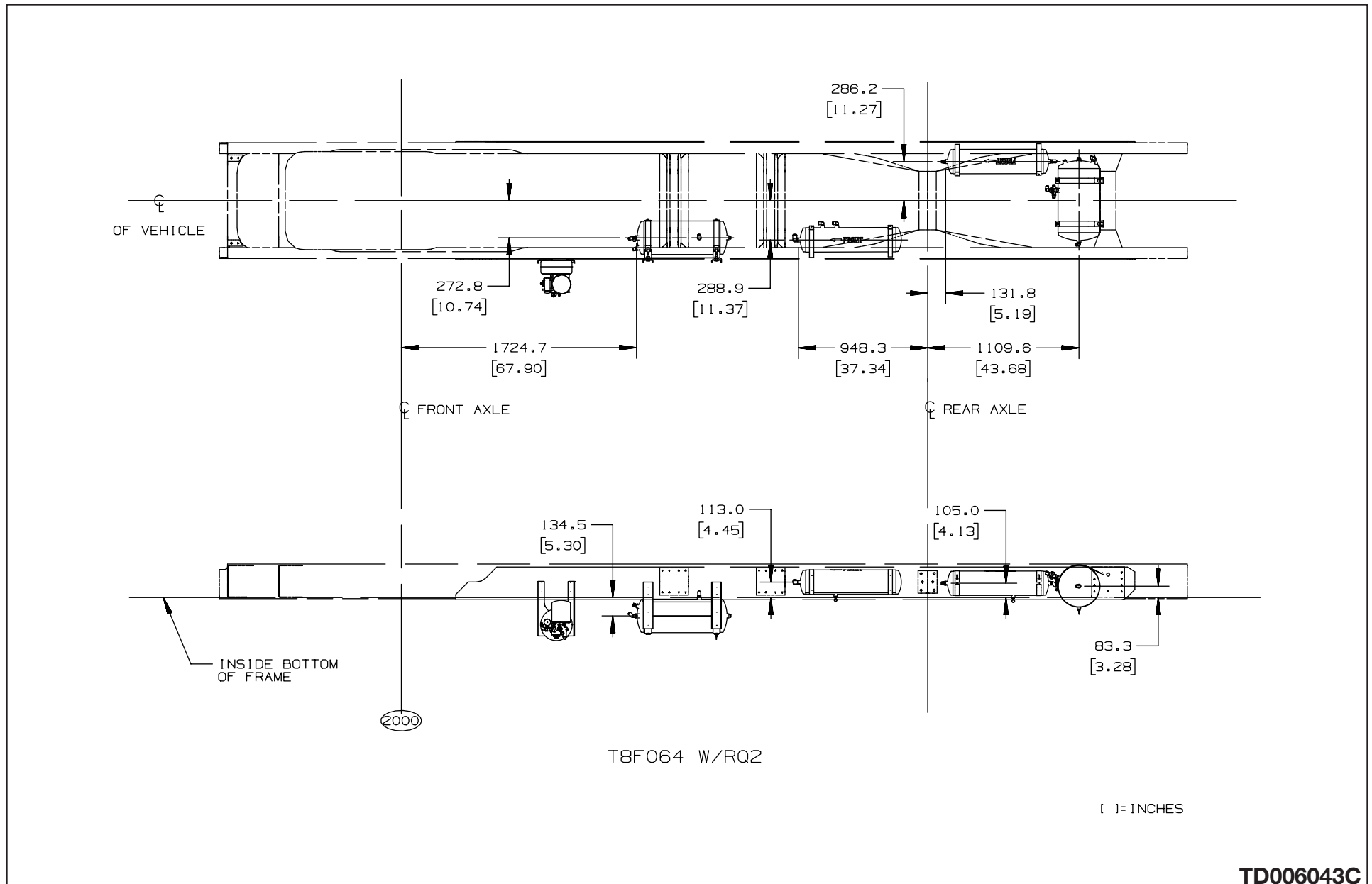
TD006043A

Air Tank Location – (042) Tractor – RQ3



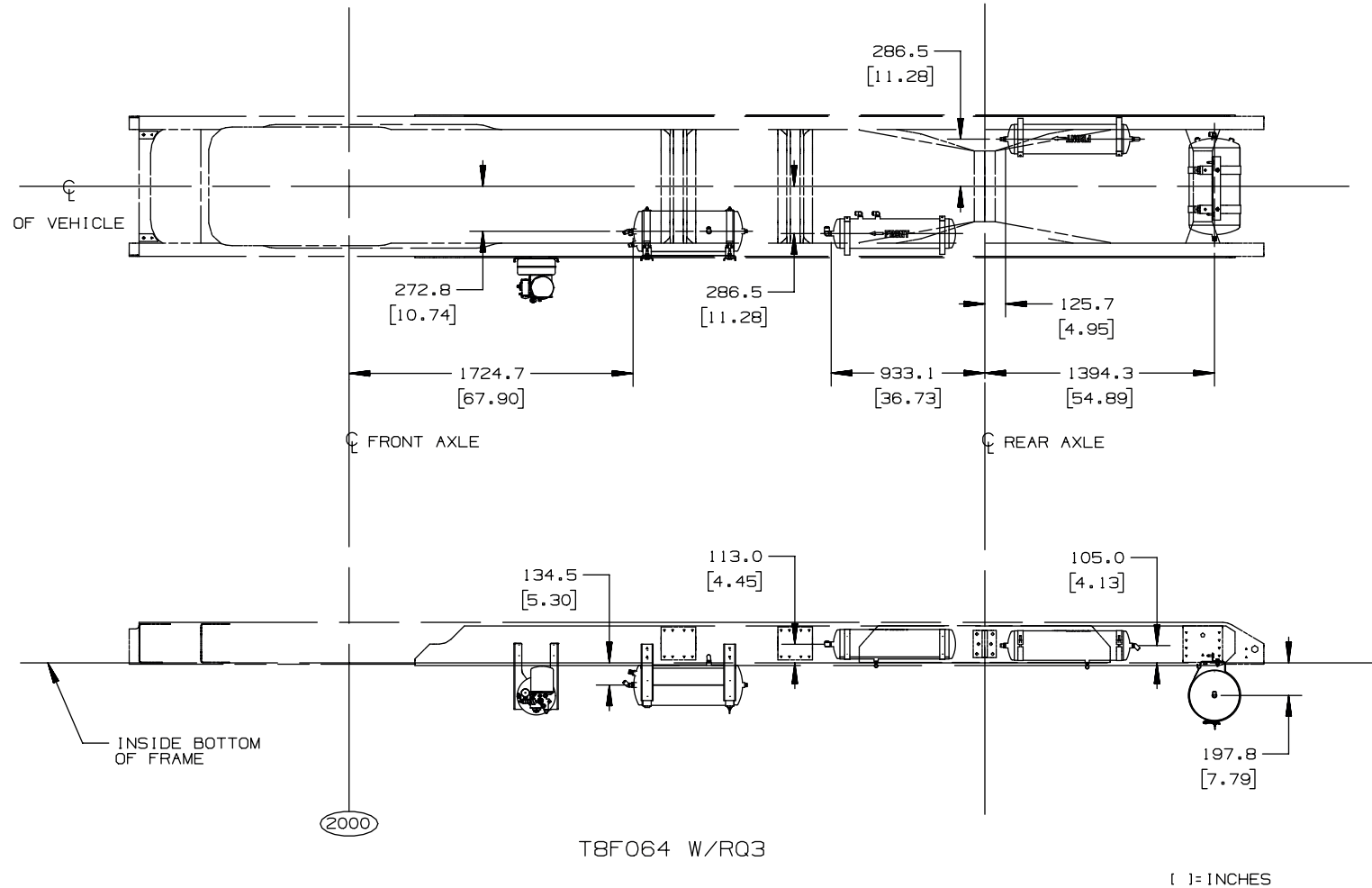
TD006043B

Air Tank Location - (064) Truck - RQ2



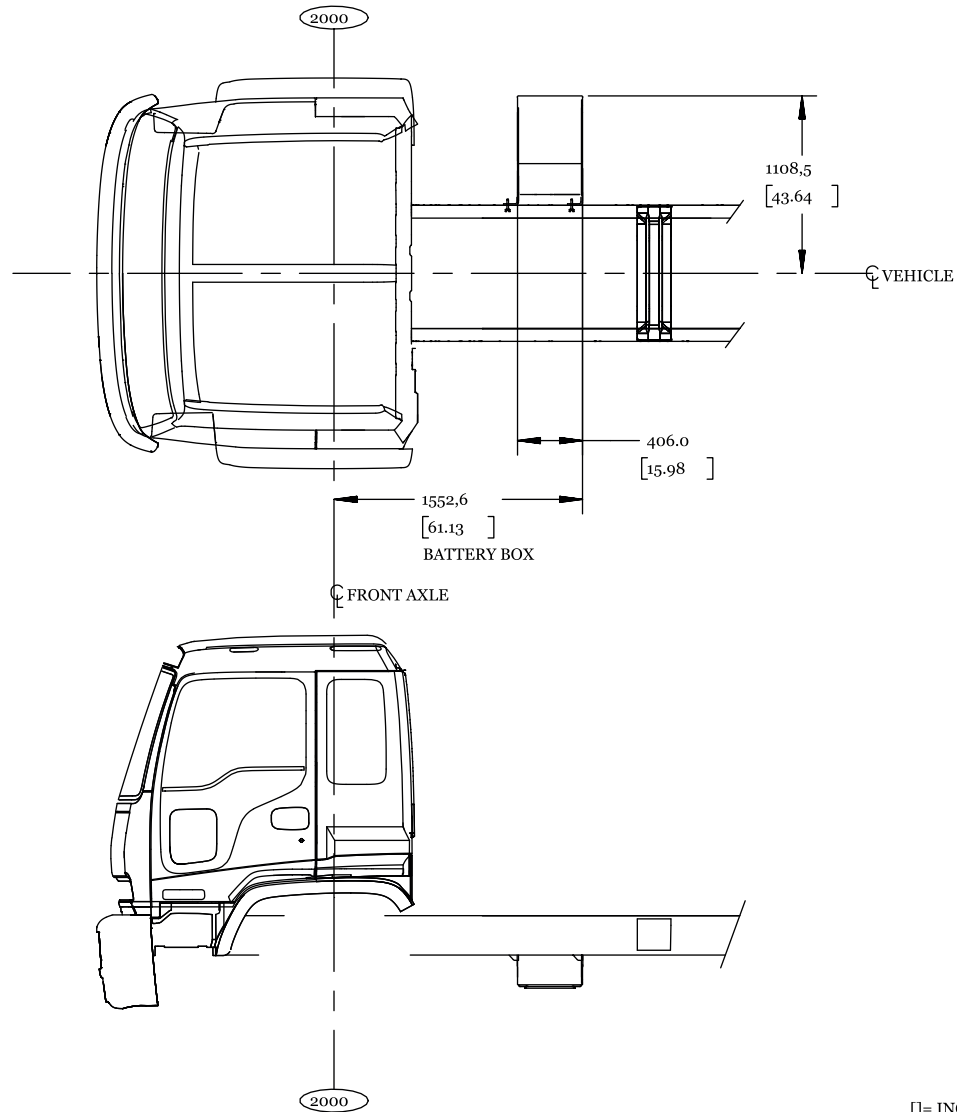
TD006043C

Air Tank Location - (064) Tractor - RQ3



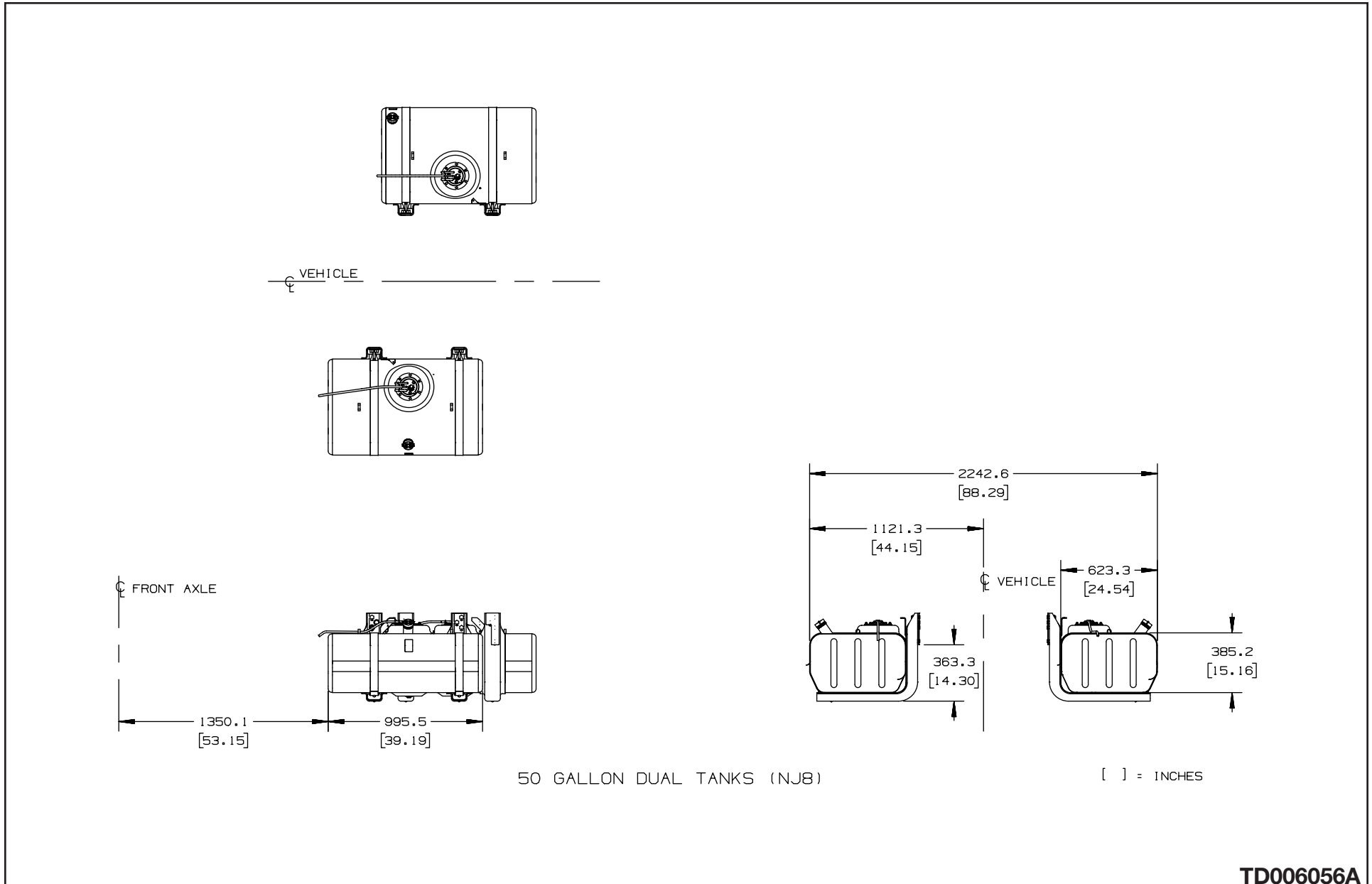
TD006043D

BATTERY BOX LOCATION



TD006042A

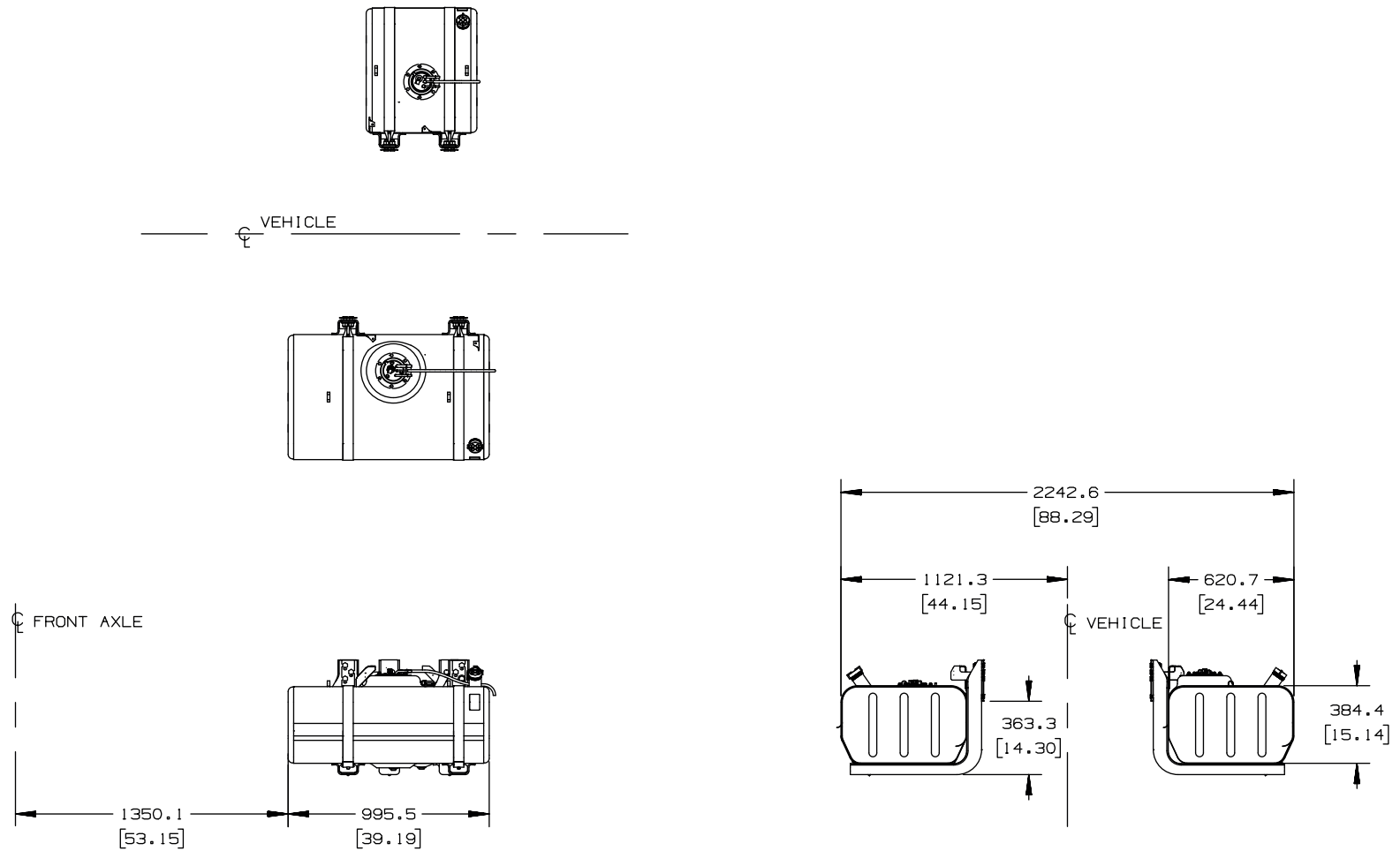
Dual 50 Gallon (opt. NJ8)



TD006056A

2004 GMT 560 T-SERIES

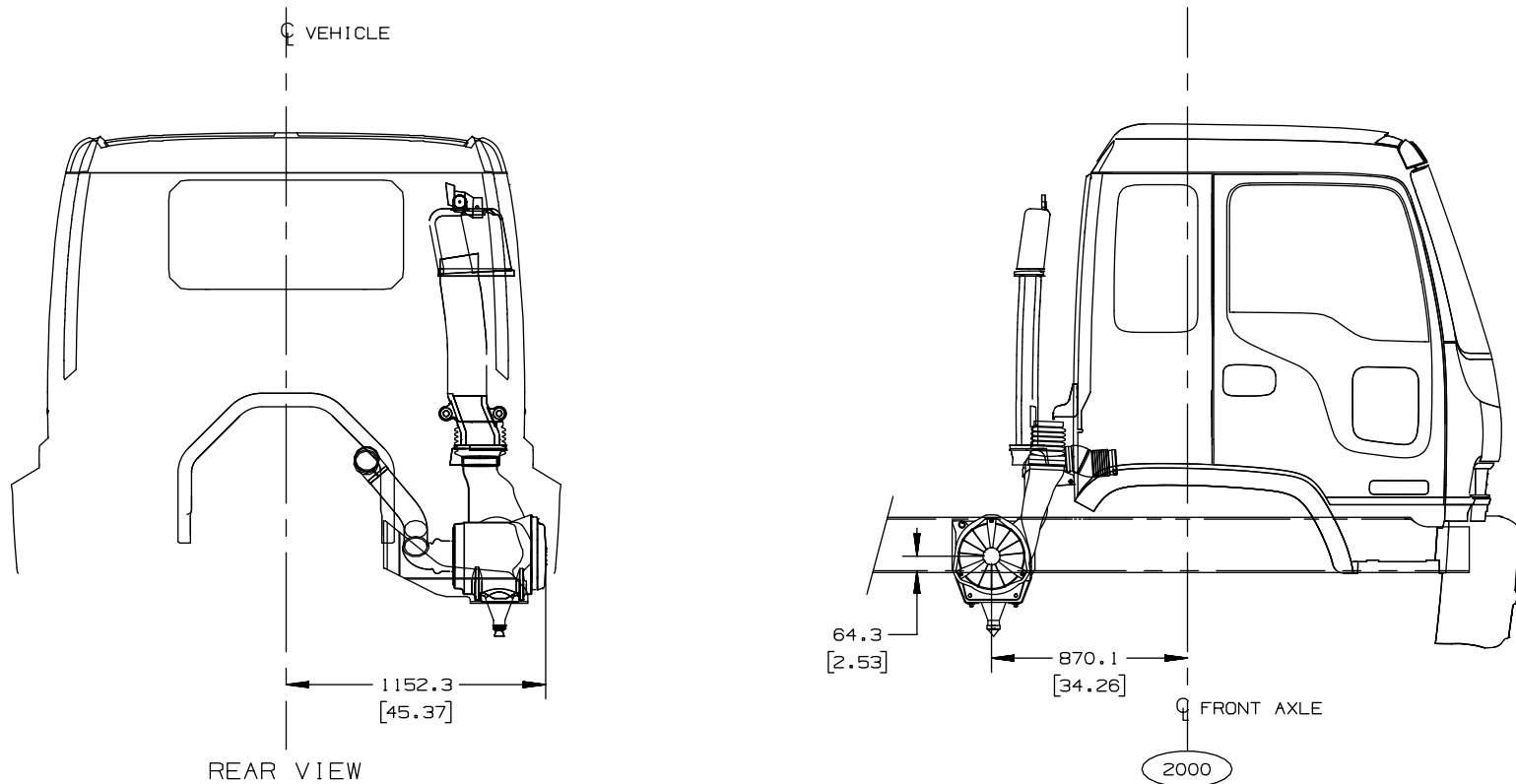
Dual 53 Gallon LH and 27 Gallon RH (opt. NJ7)



53 GALLON LH AND 27 GALLON RH FUEL TANKS (NJ7)

[] = INCHES

AIR INDUCTION

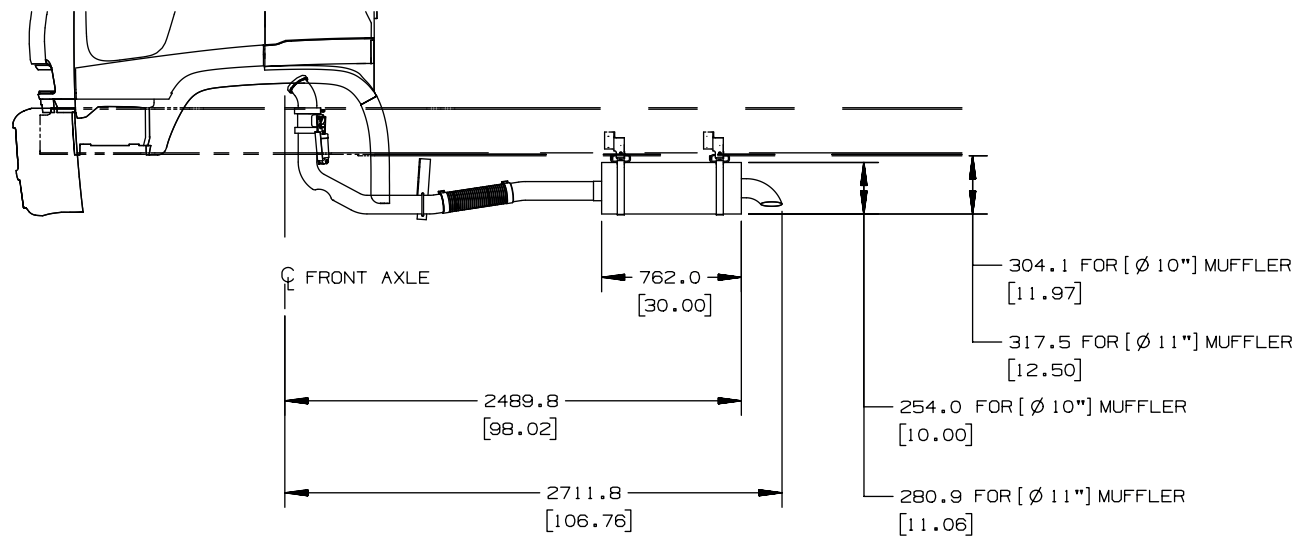
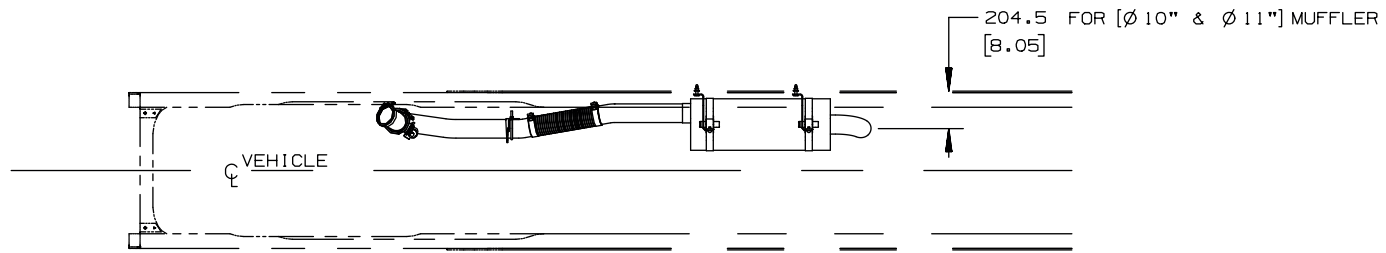


T6/7/8F000 AIR INDUCTION
GMT560, 2003

[] = 1 INCHES

TD006057A

EXHAUST



GMT560 F6/7/800 LG4 ENGINE OPTION
FOR Ø 10" & Ø 11" MUFFLER (Ø 11" MUFFLER SHOWN)

[] = INCHES

WHEELS & TIRES

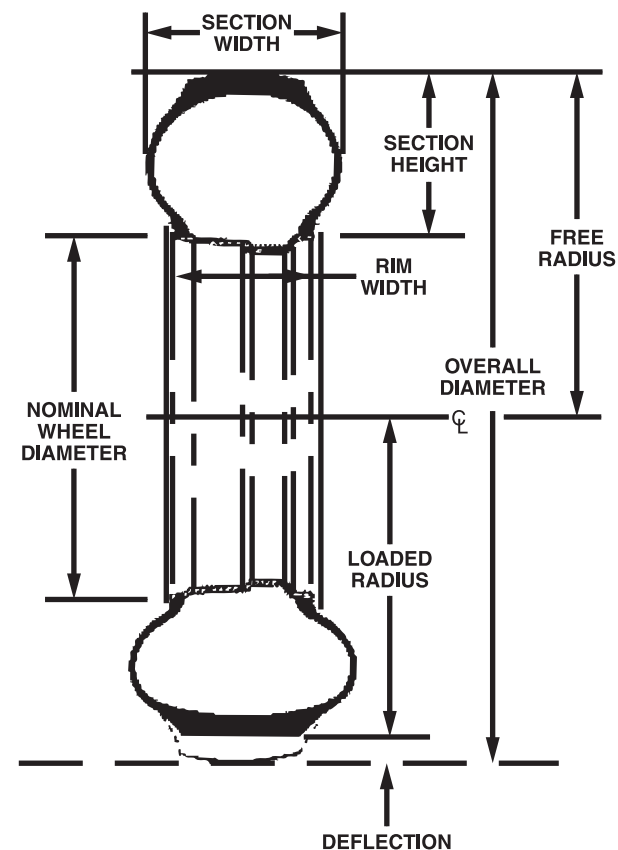
Tire Sizes and Dimensions

SW	=	Section width
SH	=	Section height
O	=	Dish offset
D	=	Diameter of tire and wheel
RW	=	Rim width
BW	=	Bulge width (loaded tire)
BCD	=	Bolt circle diameter
BD	=	Bore diameter
SLR	=	Static loaded radius
OAD	=	Overall diameter

Examples:

Tubeless	11R22.5/F	
	11	= 11" overall width between tire sidewalls
	R	= Radial construction
	22.5	= 22.5" rim diameter
	F	= 12-ply rating-load range
Low Profile	255/80R22.5G	
	255	= 255 mm overall width between tire sidewalls
	80	= Aspect ratio in % of section height/section width
	R	= Radial construction
	22.5	= 22.5" rim diameter
	G	= 14-ply rating-load rating

NOTE: Overall diameter and SLR may vary between manufacturers of the same size and tread code. Different tire sizes will affect road speed.



Hub Mount Wheel Offerings

HUB MOUNT WHEEL IDENTIFICATION

The 10-hole, 11.25" (28.6 cm) stud mount wheel and the 10-hole, 11.25" (28.6 cm) B.C. have the same bolt circle pattern but are not interchangeable. These wheels are distinguishable because of the chamfer on the stud mount wheels versus the straight through bolt holes on the hub mount wheel. In addition, generally stud mount wheels have two handholes located 180 degrees apart. By offering a five handhole version of the hub mount wheel, the differentiation between the two wheel mountings is much easier.

Also, five handhole wheels offer a weight savings versus two handhole wheels of the same general size. Many large fleets are specifying and O.E.M.s are standardizing on five handhole design for the above reasons. The industry is moving to hub mount wheel, and General Motors is pleased to offer this latest wheel technology on their vehicles. Please contact GMC Truck Sales Engineering for additional information.

GENERAL MOTORS HUB MOUNT WHEEL OFFERINGS

Description	Minimum Load & Inflation	Option Code	Wheel Location
19.5" (49.5 cm) x 6.75" (17.15 cm) 8-Hole, 10.83" (27.5 cm) B.C. Hub Piloted Disc Wheel (4 Handhole)	5,000 lb. (2,268 kg) 115 psi (7.93 bar)	Q82	Front
		Q83	Rear
22.5" (57.2 cm) x 7.50" (19.05 cm) 10-Hole, 11.25" (28.6 cm) B.C. Hub Piloted Disc Wheel (5 Handhole)	6,200 lb. (2,812 kg) 120 psi (8.27 bar)	QH3	Front
		QH4	Rear
22.5" (57.2 cm) x 8.25" (20.96 cm) 10-Hole, 11.25" (28.6 cm) B.C. Hub Piloted Disc Wheel (5 Handhole)	7,390 lb. (3,352 kg) 120 psi (8.27 bar)	RPQ	Front
		RPR	Rear
22.5" (57.2 cm) x 9.00" (22.86 cm) 10-Hole, 11.25" (28.6 cm) B.C. Hub Piloted Disc Wheel (5 Handhole)	10,000 lb. (4,536 kg) 135 psi (9.31 bar)	QH8	Front Only
24.5" (62.2 cm) x 8.25" (20.96 cm) 10-Hole, 11.25" (28.6 cm) B.C. Hub Piloted Disc Wheel (5 Handhole)	7,300 lb. (3,311 kg) 120 psi (8.27 bar)	RNP	Front Only

2004 GMT 560 T-SERIES

Steel Disc & Rim Specifications

Wheel Size	(RPO) Option		Vendor	Offset in. (cm)	Disc Thick in. (cm)	Rim Type	BC Dia. in. (cm)	No. Studs	Mounting		Bias/Radial Rating lb. (kg) @ psi (bar)
	Front	Rear							Front	Rear	
19.5" x 6.75" (49.5 cm x 17.2 cm)	Q82	Q83	Accuride	5.60 (14.22)	0.437 (1.11)	DCT	10.83 (27.5)	8	Hub Pilot Front 8	Hub Pilot Rear 8	5,000 (2,268) @ 115 (7.93)
19.5" x 6.75" (49.5 cm x 17.2 cm)	Q82 & PVA	Q83 & PVA	Accuride	5.60 (14.22)	0.437 (1.11)	DCT	10.83 (27.5)	8	Hub Pilot Front 8	Hub Pilot Rear 8	5,000 (2,268) @ 115 (7.93)
22.5" x 7.5" (57.2 cm x 19.1 cm)	QH3	QH4	Accuride	6.44 (16.36)	0.375 (0.95)	DCT	11.25 (28.6)	10	Hub Pilot Front 10	Hub Pilot Rear 10	6,610 (2,998) @ 120 (8.27)
22.5" x 8.25" (57.2 cm x 21.0 cm)	RPQ	RPR	Accuride	6.62 (16.81)	0.437 (1.11)	DCT	11.25 (28.6)	10	Hub Pilot Front 10	Hub Pilot Rear 10	7,390 (3,352) @ 120 (8.27)
22.5" x 8.25" (57.2 cm x 21.0 cm)	RPQ & PVA	RPR & PVA	Accuride	6.62 (16.81)	0.437 (1.11)	DCT	11.25 (28.6)	10	Hub Pilot Front 10	Hub Pilot Rear 10	7,390 (3,352) @ 120 (8.27)
22.5" x 9.0" (57.2 cm x 22.9 cm)	QH8		Accuride	5.75 (14.61)	0.500 (1.27)	BC	11.25 (28.6)	10	Hub Pilot Front 10		10,000 (4,536) @ 135 (9.31)
24.5" x 8.25" (62.2 cm x 21.0 cm)	RNP		Accuride	6.62 (16.81)	0.4 (1.02)	DCT	11.25 (28.6)	10	Hub Pilot Front 10	Hub Pilot Rear 10	7,300 (3,311) @ 120 (8.27)

RPO PVA: Wheel is pre-painted white.



8-Hole Hub Pilot



10-Hole Hub Pilot

2004 GMT 560 T-SERIES

Aluminum Disc & Rim Specifications

Wheel Size	(RPO) Option		Vendor	Offset in. (cm)	Disc Thick in. (cm)	Rim Type	BC Dia. in. (cm)	No. Studs	Mounting		Bias/Radial Rating lb. (kg) @ psi (bar)
	Front	Rear							Front	Rear	
19.5" x 6.75" (49.5 cm x 17.15 cm)	RPM & YU8		Alcoa	5.551 (14.10)	0.827 (2.1)	DCT	10.8 (27.5)	8	Hub Pilot Front 8		5,500 (2,495) @ 140 (9.7)
19.5" x 6.75" (49.5 cm x 17.15 cm)		RPW & PNB Inner	Accuride Steel Disc	5.60 (14.22)	0.437 (1.11)	DCT	10.8 (27.5)	8		Hub Pilot Rear 8	5,000 (2,268) @ 115 (7.9)
19.5" x 6.75" (49.5 cm x 17.15 cm)		RPW & PNB Outer	Alcoa	5.55 (14.10)	0.827 (2.10)	DCT	10.8 (27.5)	8		Hub Pilot Rear 8	5,500 (2,495) @ 115 (7.9)
22.5" x 8.25" (57.2 cm x 20.96 cm)	RNH & YU8		AKW	6.59 (16.74)	0.935 (2.38)	DCT	11.25 (28.6)	10	Hub Pilot Front 10		7,300 (3,311) @ 120 (8.3)
22.5" x 8.25" (57.2 cm x 20.96 cm)		RNN & PNB	AKW	6.59 (16.74)	0.935 (2.38)	DCT	11.25 (28.6)	10		Hub Pilot Rear 10	7,300 (3,311) @ 120 (8.3)

- AKW: Is an Accuride/Kaiser Partnership aluminum wheel.
 RPO RPW: Is a steel disc inner wheel same as Q83, painted gray.
 RPO YU8: Aluminum front wheel polished one side (except RPM which is polished both sides and priced accordingly).
 RPO PNB: Both inner and outer rear wheels are aluminum and polished on both sides.



8-Hole ALCOA Hub Pilot



10-Hole AKW Hub Pilot

2004 GMT 560 T-SERIES

Recommended Spacing of Dual Rear Wheels / Radial Tires

Tire Size	Tire Radius		Tire Section Grown Width in. (cm)	Tire Clearance Min. Design* in. (cm)	Recommended Chain Clearance in. (cm)	Design Rim Width in. (cm)
	Loaded in. (cm)	Unloaded in. (cm)				
8R19.5	16.2 (41.2)	17.25 (43.8)	8.64 (22.0)	.56 (1.4)	1.50 (3.81)	6.00 (15.24)
8R22.5	17.3 (43.9)	18.75 (47.6)	8.64 (22.0)	.56 (1.4)	1.65 (4.19)	6.00 (15.24)
9R22.5	18.0 (45.7)	19.05 (48.4)	9.72 (24.7)	.58 (1.5)	1.65 (4.19)	6.75 (17.15)
10R22.5	18.7 (47.5)	20.45 (51.9)	10.80 (27.4)	.60 (1.5)	1.65 (4.19)	7.50 (19.05)
11R22.5	19.4 (49.3)	21.17 (53.8)	11.88 (30.2)	.72 (1.8)	1.65 (4.19)	8.25 (20.96)

* Recommended minimum clearance between dual tires.

Size Equivalency Chart

Tube Type	Low Pro Tube Type	Tubeless	Lo Pro 75 Series (Goodyear)	Lo Pro 80 Series (Michelin)	Ultra Lo Pro
		8R19.5			225/70R19.5
7.50R20		8R22.5			245/70R19.5
8.25R20		9R22.5	245/75R22.5	235/80R22.5	245/70R19.5
9.00R20		10R22.5	265/75R22.5	255/80R22.5	
9.00R20	10/90R20	10R22.5			255/70R22.5
10.00R20		11R22.5	295/75R22.5	275/80R22.5	
10.00R20		11R22.5		275/80R22.5	
11.00R20		12R22.5		295/80R22.5	
				315/80R22.5	

NOTE: Chart shows comparable sizes, not equal sizes. Check specific dimensions and load capabilities before replacing one tire size with another.

2004 GMT 560 T-SERIES

Goodyear Radial Tires

FOR GOODYEAR TIRES YOU MUST SPECIFY R4A FOR FRONT TIRES AND S4A FOR THE REAR TIRES.

Goodyear Code: R4A

TIRE TREAD NAME: G291

TREAD CODE	RPO	SIZE	LOAD RANGE/PLY RATING	MIN. SPACING OF DUALS in. (cm)	DIMENSIONS				GROSS CONTACT AREA sq. in. (sq. cm)	REVS PER mile (km)	TIRE WEIGHT lb. (kg)	MAX. PRESSURE		MAX. LOAD		MAX. SPEED mph (kmh)
					NO LOAD		LOADED					SINGLE psi (bar)	DUAL psi (bar)	SINGLE lb. (kg)	DUAL lb. (kg)	
					WIDTH in. (cm)	DIA. in. (cm)	WIDTH in. (cm)	SLR in. (cm)								
R3C	XWN	315/80R22.5	J/18	13.8 (35.1)	12.4 (31.5)	42.3 (107.4)	13.5 (34.3)	19.7 (50.0)	88 (568)	491 (305)	145 (66)	120 (8.3)	120 (8.3)	8,270 (3,751)	7,610 (3,452)	75 (121)

2004 GMT 560 T-SERIES

Goodyear Code: R4A/S4A

TIRE TREAD NAME: G159

TREAD CODE	RPO	SIZE	LOAD RANGE/PLY RATING	MIN. SPACING OF DUALS in. (cm)	DIMENSIONS				GROSS CONTACT AREA sq. in. (sq. cm)	REVS PER mile (km)	TIRE WEIGHT lb. (kg)	MAX. PRESSURE		MAX. LOAD		MAX. SPEED mph (kmh)
					NO LOAD		LOADED					SINGLE psi (bar)	DUAL psi (bar)	SINGLE lb. (kg)	DUAL lb. (kg)	
					WIDTH in. (cm)	DIA. in. (cm)	WIDTH in. (cm)	SLR in. (cm)								
R3C/S3C	XTY/YTY	245/70R19.5	G/14	11.0 (27.9)	10.2 (25.9)	33.0 (83.8)	11.0 (27.9)	15.3 (38.9)	53 (342)	625 (388)	73 (33)	100 (6.9)	100 (6.9)	4,545 (2,062)	4,375 (1,984)	75 (121)
R3C/S3C	XWL/YWL	11R22.5	G/14	12.5 (31.8)	10.8 (27.4)	41.5 (102.4)	11.9 (30.2)	19.4 (49.3)	70 (452)	501 (311)	123 (56)	105 (7.2)	105 (7.2)	6,175 (2,801)	5,750 (2,608)	75 (121)
R3C/S3C	XWM/YWM	11R22.5	H/16	12.5 (31.8)	10.8 (27.4)	41.5 (102.4)	11.9 (30.2)	19.4 (49.3)	70 (452)	501 (311)	132 (60)	120 (8.3)	110 (7.6)	6,610 (2,998)	5,800 (2,631)	75 (121)
R3C/S3C	XTQ/YTQ	245/75R22.5	G/14	11.0 (27.9)	9.5 (24.1)	37.0 (94.0)	10.4 (26.4)	17.2 (43.7)	54 (348)	561 (349)	85 (39)	110 (7.6)	110 (7.6)	4,675 (2,121)	4,410 (2,000)	75 (121)
R3C/S3C	XTU/YTU	265/75R22.5	G/14	11.6 (29.5)	10.0 (25.4)	38.7 (98.3)	10.8 (27.4)	18.0 (45.7)	61 (394)	537 (334)	97 (44)	110 (7.6)	100 (6.9)	5,205 (2,361)	4,805 (2,180)	75 (121)
R3C/S3C	XRN/YRN	295/75R22.5	G/14	12.9 (32.8)	11.2 (28.4)	40.2 (102.1)	12.2 (31.0)	18.8 (47.8)	69 (445)	517 (321)	114 (52)	110 (7.6)	100 (6.9)	6,175 (2,801)	5,675 (2,574)	75 (121)
R3C/S3C	XWJ/YWJ	10R22.5	F/12	11.4 (28.9)	10.1 (25.7)	40.1 (101.9)	11.0 (27.9)	18.8 (47.8)	63 (407)	518 (322)	107 (49)	100 (6.9)	100 (6.9)	5,150 (2,336)	4,875 (2,211)	65 ⁽¹⁾ (105)
R3C/S3C	XWP/YWP	12R22.5	H/16	13.5 (34.3)	11.5 (29.2)	42.9 (109.0)	12.5 (31.8)	20.1 (51.0)	75 (484)	484 (301)	144 (65)	120 (8.3)	120 (8.3)	7,390 (3,352)	6,750 (3,062)	65 ⁽¹⁾ (105)
R3C/S3C	XWK/YWK	10R22.5	G/14	11.4 (28.9)	10.1 (25.7)	40.1 (101.9)	11.0 (27.9)	18.8 (47.8)	63 (407)	518 (322)	112 (51)	115 (7.9)	115 (7.9)	5,680 (2,576)	5,250 (2,381)	65 (105)
R3C/S3C	XUE/YUE	9R22.5	F/12	10.3 (26.2)	9.0 (22.9)	38.4 (97.5)	9.9 (25.1)	18.0 (45.7)	53 (342)	541 (336)	92 (42)	105 (7.2)	95 (6.6)	4,500 (2,041)	3,950 (1,792)	65 ⁽¹⁾ (105)

⁽¹⁾ Max. speed may be increased to 75 mph (121 kmh) by adding 5 psi (.34 bar) to data book recommended pressure. As a result of adding 5 psi (.34 bar) to obtain 75 mph (121 kmh) rating, the tire capacity will decrease by 12%. Do not exceed maximum pressure capacity of wheel. Consult wheel manufacturer. Exceeding the lawful speed limit is neither recommended nor endorsed.

2004 GMT 560 T-SERIES

Goodyear Code: S4A

TIRE TREAD NAME: G169 RSA

TREAD CODE	RPO	SIZE	LOAD RANGE/PLY RATING	MIN. SPACING OF DUALS in. (cm)	DIMENSIONS				GROSS CONTACT AREA sq. in. (sq. cm)	REVS PER mile (km)	TIRE WEIGHT lb. (kg)	MAX. PRESSURE		MAX. LOAD		MAX. SPEED mph (kmh)
					NO LOAD		LOADED					SINGLE psi (bar)	DUAL psi (bar)	SINGLE lb. (kg)	DUAL lb. (kg)	
					WIDTH in. (cm)	DIA. in. (cm)	WIDTH in. (cm)	SLR in. (cm)								
R3C/S3C	XTB/YTB	255/70R22.5	H/16	11.3 (28.7)	10.0 (25.4)	36.6 (92.9)	11.0 (27.9)	17.1 (43.4)	55 (355)	568 (353)	86 (39)	120 (8.3)	120 (8.3)	5,510 (2,499)	5,070 (2,300)	75 (121)

Goodyear Code: R4A/S4A

TIRE TREAD NAME: G149 RSA

TREAD CODE	RPO	SIZE	LOAD RANGE/PLY RATING	MIN. SPACING OF DUALS in. (cm)	DIMENSIONS				GROSS CONTACT AREA sq. in. (sq. cm)	REVS PER mile (km)	TIRE WEIGHT lb. (kg)	MAX. PRESSURE		MAX. LOAD		MAX. SPEED mph (kmh)
					NO LOAD		LOADED					SINGLE psi (bar)	DUAL psi (bar)	SINGLE lb. (kg)	DUAL lb. (kg)	
					WIDTH in. (cm)	DIA. in. (cm)	WIDTH in. (cm)	SLR in. (cm)								
R3C/S3C	XRV/YRV	11R22.5	G/14	12.5 (31.8)	10.8 (27.4)	41.5 (105.4)	11.8 (30.0)	19.4 (49.3)	73 (471)	501 (311)	125 (57)	105 (7.2)	105 (7.2)	6,175 (2,801)	5,840 (2,650)	75 (121)

Goodyear Code: S4A

TIRE TREAD NAME: G164 RTD

TREAD CODE	RPO	SIZE	LOAD RANGE/PLY RATING	MIN. SPACING OF DUALS in. (cm)	DIMENSIONS				GROSS CONTACT AREA sq. in. (sq. cm)	REVS PER mile (km)	TIRE WEIGHT lb. (kg)	MAX. PRESSURE		MAX. LOAD		MAX. SPEED mph (kmh)
					NO LOAD		LOADED					SINGLE psi (bar)	DUAL psi (bar)	SINGLE lb. (kg)	DUAL lb. (kg)	
					WIDTH in. (cm)	DIA. in. (cm)	WIDTH in. (cm)	SLR in. (cm)								
S3H	YWL	11R22.5	G/14	12.5 (31.8)	10.8 (27.4)	41.8 (106.2)	11.9 (30.2)	19.6 (49.8)	73 (471)	499 (310)	124 (56)	105 (7.2)	105 (7.2)	6,175 (2,801)	5,840 (2,650)	75 (121)
S3H	YWM	11R22.5	H/16	12.5 (31.8)	10.8 (27.4)	41.8 (106.2)	11.9 (30.2)	19.6 (49.8)	73 (471)	499 (310)	137 (62)	120 (8.3)	120 (8.3)	6,610 (2,998)	6,005 (2,725)	75 (121)
S3H	YRN	295/75R22.5	G/14	12.9 (32.8)	11.1 (28.2)	40.5 (102.9)	12.1 (30.7)	19.1 (48.5)	71 (458)	515 (320)	119 (54)	110 (7.6)	100 (6.9)	6,175 (2,801)	5,675 (2,574)	75 (121)
S3H	YTB	255/70R22.5	H/16	11.3 (28.7)	10.0 (25.4)	36.9 (93.7)	11.0 (27.9)	17.3 (43.9)	58 (374)	563 (349)	90 (41)	120 (8.3)	120 (8.3)	5,510 (2,499)	5,070 (2,300)	75 (121)

2004 GMT 560 T-SERIES

Goodyear Code: S4A

TIRE TREAD NAME: G124

TREAD CODE	RPO	SIZE	LOAD RANGE/PLY RATING	MIN. SPACING OF DUALS in. (cm)	DIMENSIONS				GROSS CONTACT AREA sq. in. (sq. cm)	REVS PER mile (km)	TIRE WEIGHT lb. (kg)	MAX. PRESSURE		MAX. LOAD		MAX. SPEED mph (kmh)
					NO LOAD		LOADED					SINGLE psi (bar)	DUAL psi (bar)	SINGLE lb. (kg)	DUAL lb. (kg)	
					WIDTH in. (cm)	DIA. in. (cm)	WIDTH in. (cm)	SLR in. (cm)								
S3H	YTY	245/70R19.5	G/14	11.0 (27.9)	10.2 (25.9)	33.2 (84.3)	11.0 (27.9)	15.5 (39.4)	55 (355)	626 (389)	76 (35)	100 (6.9)	100 (6.9)	4,545 (2,062)	4,375 (1,984)	75 (121)
S3H	YTU	265/75R22.5	G/14	11.6 (29.5)	9.9 (25.1)	38.7 (98.3)	10.9 (27.7)	18.2 (46.2)	63 (407)	537 (334)	101 (46)	110 (7.6)	100 (6.9)	5,205 (2,361)	4,805 (2,180)	65 ⁽¹⁾ (105)
S3H	YTQ	245/75R22.5	G/14	11.0 (27.9)	9.5 (24.1)	37.3 (94.7)	10.5 (26.7)	17.4 (44.2)	56 (361)	557 (346)	90 (41)	110 (7.6)	110 (7.6)	4,675 (2,121)	4,410 (2,000)	65 ⁽¹⁾ (105)
S3H	YWM	11R22.5	H/16	12.5 (31.8)	10.8 (27.4)	41.6 (105.7)	11.9 (30.2)	19.5 (49.5)	73 (471)	499 (310)	135 (61)	120 (8.3)	110 (7.6)	6,610 (2,998)	5,800 (2,631)	75 (121)
S3H	YWJ	10R22.5	F/12	11.4 (29.0)	10.0 (25.4)	40.4 (102.6)	11.0 (27.9)	19.0 (48.3)	67 (432)	514 (319)	111 (50)	100 (6.9)	100 (6.9)	5,150 (2,336)	4,875 (2,211)	65 ⁽¹⁾ (105)
S3H	YWP	12R22.5	H/16	13.5 (34.3)	11.2 (28.4)	43.1 (109.2)	12.4 (31.5)	20.2 (51.3)	78 (503)	482 (300)	147 (67)	120 (8.3)	120 (8.3)	7,390 (3,352)	6,750 (3,062)	65 ⁽¹⁾ (105)
S3H	YUE	9R22.5	F/12	10.3 (26.2)	9.0 (22.9)	38.6 (98.0)	9.9 (25.1)	18.1 (46.0)	57 (368)	538 (334)	95 (43)	105 (7.3)	95 (6.6)	4,500 (2,041)	3,950 (1,792)	65 ⁽¹⁾ (105)
S3H	YWK	10R22.5	G/14	11.4 (29.0)	10.0 (25.4)	40.4 (102.6)	11.0 (27.9)	19.0 (48.3)	67 (432)	514 (319)	116 (53)	115 (7.9)	115 (7.9)	5,680 (2,576)	5,250 (2,381)	65 ⁽¹⁾ (105)

⁽¹⁾ Max. speed may be increased to 75 mph (121 kmh) by adding 5 psi (.34 bar) to data book recommended pressure. As a result of adding 5 psi (.34 bar) to obtain 75 mph (121 kmh) rating, the tire capacity will decrease by 12%. Do not exceed maximum pressure capacity of wheel. Consult wheel manufacturer. Exceeding the lawful speed limit is neither recommended nor endorsed.

2004 GMT 560 T-SERIES

Goodyear Code: S4A

TIRE TREAD NAME: G167

TREAD CODE	RPO	SIZE	LOAD RANGE/PLY RATING	MIN. SPACING OF DUALS in. (cm)	DIMENSIONS				GROSS CONTACT AREA sq. in. (sq. cm)	REVS PER mile (km)	TIRE WEIGHT lb. (kg)	MAX. PRESSURE		MAX. LOAD		MAX. SPEED mph (kmh)
					NO LOAD		LOADED					SINGLE psi (bar)	DUAL psi (bar)	SINGLE lb. (kg)	DUAL lb. (kg)	
					WIDTH in. (cm)	DIA. in. (cm)	WIDTH in. (cm)	SLR in. (cm)								
S3D	YWL	11R22.5	G/14	12.5 (31.8)	10.8 (27.4)	42.0 (106.7)	11.9 (30.2)	19.7 (50.0)	73 (471)	497 (309)	130 (59)	105 (7.2)	105 (7.2)	6,175 (2,801)	5,750 (2,608)	75 (121)
S3D	YWM	11R22.5	H/16	12.5 (31.8)	10.8 (27.4)	42.0 (106.7)	11.9 (30.2)	19.7 (50.0)	73 (471)	497 (309)	140 (64)	120 (8.3)	110 (7.6)	6,610 (2,998)	5,800 (2,631)	75 (121)
S3D	YRN	295/75R22.5	G/14	12.9 (32.8)	10.9 (27.7)	40.8 (103.6)	11.9 (30.2)	19.0 (48.3)	68 (439)	512 (318)	118 (54)	110 (7.6)	100 (6.9)	6,175 (2,801)	5,675 (2,574)	75 (121)
S3D	YWP	12R22.5	H/16	13.5 (34.3)	11.5 (29.2)	43.2 (109.7)	12.7 (32.3)	20.2 (51.3)	80 (586)	483 (301)	151 (69)	120 (8.3)	120 (8.3)	7,390 (3,352)	6,750 (3,062)	65 (105)

Goodyear Code: S4A

TIRE TREAD NAME: G244 MSD

TREAD CODE	RPO	SIZE	LOAD RANGE/PLY RATING	MIN. SPACING OF DUALS in. (cm)	DIMENSIONS				GROSS CONTACT AREA sq. in. (sq. cm)	REVS PER mile (km)	TIRE WEIGHT lb. (kg)	MAX. PRESSURE		MAX. LOAD		MAX. SPEED mph (kmh)
					NO LOAD		LOADED					SINGLE psi (bar)	DUAL psi (bar)	SINGLE lb. (kg)	DUAL lb. (kg)	
					WIDTH in. (cm)	DIA. in. (cm)	WIDTH in. (cm)	SLR in. (cm)								
S3E	YWM	11R22.5	H/16	12.5 (31.8)	10.9 (27.7)	42.0 (106.7)	11.9 (30.2)	19.8 (50.3)	81 (523)	497 (309)	141 (65)	120 (8.3)	120 (8.3)	6,610 (2,998)	6,005 (2,725)	75 (121)

2004 GMT 560 T-SERIES

Goodyear Code: R4A/S4A

TIRE TREAD NAME: G286

TREAD CODE	RPO	SIZE	LOAD RANGE/PLY RATING	MIN. SPACING OF DUALS in. (cm)	DIMENSIONS				GROSS CONTACT AREA sq. in. (sq. cm)	REVS PER mile (km)	TIRE WEIGHT lb. (kg)	MAX. PRESSURE		MAX. LOAD		MAX. SPEED mph (kmh)
					NO LOAD		LOADED					SINGLE psi (bar)	DUAL psi (bar)	SINGLE lb. (kg)	DUAL lb. (kg)	
					WIDTH in. (cm)	DIA. in. (cm)	WIDTH in. (cm)	SLR in. (cm)								
R3F/S3F	XWP/YWP	12R22.5	H/16	13.5 (34.3)	11.4 (29.0)	43.0 (109.2)	12.5 (31.8)	20.0 (50.8)	81 (523)	483 (300)	149 (68)	120 (8.3)	120 (8.3)	7,390 (3,352)	6,750 (3,062)	65 ⁽¹⁾ (105)
R3F/S3F	XWM/YWM	11R22.5	H/16	12.5 (31.8)	10.9 (27.7)	41.9 (106.4)	12.0 (30.5)	19.6 (49.8)	78 (503)	496 (308)	135 (61)	120 (8.3)	110 (7.6)	6,610 (2,998)	5,800 (2,631)	65 ⁽¹⁾ (105)

Goodyear Code: R4A/S4A

TIRE TREAD NAME: G186

TREAD CODE	RPO	SIZE	LOAD RANGE/PLY RATING	MIN. SPACING OF DUALS in. (cm)	DIMENSIONS				GROSS CONTACT AREA sq. in. (sq. cm)	REVS PER mile (km)	TIRE WEIGHT lb. (kg)	MAX. PRESSURE		MAX. LOAD		MAX. SPEED mph (kmh)
					NO LOAD		LOADED					SINGLE psi (bar)	DUAL psi (bar)	SINGLE lb. (kg)	DUAL lb. (kg)	
					WIDTH in. (cm)	DIA. in. (cm)	WIDTH in. (cm)	SLR in. (cm)								
R3K/S3K	XWJ/YWJ	10R22.5	F/12	11.4 (29.0)	10.0 (25.4)	40.4 (102.6)	11.0 (27.9)	18.9 (48.0)	64 (413)	514 (319)	108 (49)	100 (6.9)	100 (6.9)	5,150 (2,336)	4,875 (2,211)	65 ⁽¹⁾ (105)
R3K/S3K	XWM/YWM	11R22.5	H/16	12.5 (31.8)	10.9 (27.7)	41.8 (106.2)	12.0 (30.5)	19.5 (49.5)	70 (452)	497 (309)	133 (60)	120 (8.3)	110 (7.6)	6,610 (2,998)	5,800 (2,631)	65 ⁽¹⁾ (105)

Goodyear Code: R4A/S4A

TIRE TREAD NAME: G177

TREAD CODE	RPO	SIZE	LOAD RANGE/PLY RATING	MIN. SPACING OF DUALS in. (cm)	DIMENSIONS				GROSS CONTACT AREA sq. in. (sq. cm)	REVS PER mile (km)	TIRE WEIGHT lb. (kg)	MAX. PRESSURE		MAX. LOAD		MAX. SPEED mph (kmh)
					NO LOAD		LOADED					SINGLE psi (bar)	DUAL psi (bar)	SINGLE lb. (kg)	DUAL lb. (kg)	
					WIDTH in. (cm)	DIA. in. (cm)	WIDTH in. (cm)	SLR in. (cm)								
S3L	YWM	11R22.5	H/16	12.5 (31.8)	10.9 (27.7)	42.3 (107.4)	11.9 (30.2)	19.7 (50.0)	84 (542)	493 (306)	148 (67)	120 (8.3)	110 (7.6)	6,610 (2,998)	5,800 (2,631)	65 ⁽¹⁾ (105)
S3L	YWP	12R22.5	H/16	13.5 (34.3)	11.5 (29.2)	43.7 (111.0)	12.6 (32.0)	20.5 (52.1)	87 (561)	478 (297)	160 (73)	120 (8.3)	120 (8.3)	7,390 (3,352)	6,780 (3,075)	65 ⁽¹⁾ (105)

⁽¹⁾ Max. speed may be increased to 75 mph (121 kmh) by adding 5 psi (.34 bar) to data book recommended pressure. As a result of adding 5 psi (.34 bar) to obtain 75 mph (121 kmh) rating, the tire capacity will decrease by 12%. Do not exceed maximum pressure capacity of wheel. Consult wheel manufacturer. Exceeding the lawful speed limit is neither recommended nor endorsed.

2004 GMT 560 T-SERIES

Goodyear Code: R4A

TIRE TREAD NAME: G357

TREAD CODE	RPO	SIZE	LOAD RANGE/PLY RATING	MIN. SPACING OF DUALS in. (cm)	DIMENSIONS				GROSS CONTACT AREA sq. in. (sq. cm)	REVS PER mile (km)	TIRE WEIGHT lb. (kg)	MAX. PRESSURE		MAX. LOAD		MAX. SPEED mph (kmh)
					NO LOAD		LOADED					SINGLE psi (bar)	DUAL psi (bar)	SINGLE lb. (kg)	DUAL lb. (kg)	
					WIDTH in. (cm)	DIA. in. (cm)	WIDTH in. (cm)	SLR in. (cm)								
R3N	XWL	11R22.5	G/14	12.5 (31.8)	10.9 (27.7)	41.3 (104.9)	11.9 (30.2)	19.4 (49.3)	70 (452)	503 (313)	121 (55)	105 (7.2)	105 (7.2)	6,175 (2,801)	5,840 (2,650)	75 (121)
R3N	XRN	295/75R22.5	G/14	12.9 (32.8)	11.2 (28.5)	40.1 (101.9)	12.1 (30.7)	18.7 (47.5)	67 (432)	518 (322)	111 (50)	110 (7.6)	100 (6.9)	6,175 (2,801)	5,675 (2,574)	75 (121)

Goodyear Code: R4A/S4A

TIRE TREAD NAME: G328

TREAD CODE	RPO	SIZE	LOAD RANGE/PLY RATING	MIN. SPACING OF DUALS in. (cm)	DIMENSIONS				GROSS CONTACT AREA sq. in. (sq. cm)	REVS PER mile (km)	TIRE WEIGHT lb. (kg)	MAX. PRESSURE		MAX. LOAD		MAX. SPEED mph (kmh)
					NO LOAD		LOADED					SINGLE psi (bar)	DUAL psi (bar)	SINGLE lb. (kg)	DUAL lb. (kg)	
					WIDTH in. (cm)	DIA. in. (cm)	WIDTH in. (cm)	SLR in. (cm)								
S3J	YWL	11R22.5	G/14	12.5 (31.8)	10.8 (27.4)	42.1 (106.9)	11.9 (30.2)	19.8 (50.3)	78 (503)	496 (308)	131 (59)	105 (7.2)	105 (7.2)	6,175 (2,801)	5,750 (2,608)	75 (121)

Goodyear Code: R4A/S4A

TIRE TREAD NAME: Marathon LHS

TREAD CODE	RPO	SIZE	LOAD RANGE/PLY RATING	MIN. SPACING OF DUALS in. (cm)	DIMENSIONS				GROSS CONTACT AREA sq. in. (sq. cm)	REVS PER mile (km)	TIRE WEIGHT lb. (kg)	MAX. PRESSURE		MAX. LOAD		MAX. SPEED mph (kmh)
					NO LOAD		LOADED					SINGLE psi (bar)	DUAL psi (bar)	SINGLE lb. (kg)	DUAL lb. (kg)	
					WIDTH in. (cm)	DIA. in. (cm)	WIDTH in. (cm)	SLR in. (cm)								
R3C	XSK	295/80R22.5	H/16	13.2 (33.5)	11.8 (30.0)	41.4 (105.1)	13.2 (33.5)	19.2 (48.8)	82 (529)	502 (312)	141 (64)	125 (8.6)	125 (8.6)	7,830 (3,550)	6,940 (3,150)	75 (121)

2004 GMT 560 T-SERIES

Michelin Tires

FOR MICHELIN BRAND TIRES YOU MUST SPECIFY R4L FOR FRONT TIRES AND S4L FOR THE REAR TIRES.

Michelin Code: R4L/S4L

TIRE TREAD NAME: XZE

TREAD CODE	RPO	SIZE	LOAD RANGE/PLY RATING	MIN. SPACING OF DUALS in. (cm)	DIMENSIONS				GROSS CONTACT AREA sq. in. (sq. cm)	REVS PER mile (km)	TIRE WEIGHT lb. (kg)	MAX. PRESSURE		MAX. LOAD		MAX. SPEED mph (kmh)
					NO LOAD		LOADED					SINGLE psi (bar)	DUAL psi (bar)	SINGLE lb. (kg)	DUAL lb. (kg)	
					WIDTH in. (cm)	DIA. in. (cm)	WIDTH in. (cm)	SLR in. (cm)								
R3B/S3B	XUE/YUE	9R22.5	F/12	10.0 (25.4)	8.9 (22.6)	38.2 (97.0)	10.1 (25.6)	17.6 (44.7)	61.2 (394)	547 (340)	83 (37.7)	95 (6.6)	95 (6.6)	4,540 (2,059)	4,300 (1,950)	75 (121)
R3B/S3B	XWJ/YWJ	10R22.5	F/12	11.5 (29.2)	10.2 (25.9)	40.1 (101.9)	11.3 (28.7)	18.7 (47.5)	70.8 (456)	517 (321)	108 (49.0)	95 (6.6)	95 (6.6)	5,150 (2,336)	4,740 (2,150)	75 (121)
R3B/S3B	XWK/YWK	10R22.5	G/14	11.5 (29.2)	10.2 (25.9)	40.1 (101.9)	11.3 (28.7)	18.7 (47.5)	70.8 (456)	517 (321)	108 (49.0)	105 (7.2)	105 (7.2)	5,680 (2,576)	5,080 (2,304)	75 (121)
R3B/S3B	XWL/YWL	11R22.5	G/14	12.4 (31.5)	10.6 (26.9)	41.1 (104.4)	12.4 (31.5)	19.3 (49.0)	78.3 (505)	501 (311)	120 (54.4)	100 (6.9)	100 (6.9)	6,175 (2,801)	5,750 (2,608)	75 (121)
R3B/S3B	XWM/YWM	11R22.5	H/16	12.4 (31.5)	10.6 (26.9)	41.1 (104.4)	12.4 (31.5)	19.3 (49.0)	78.3 (505)	501 (311)	122 (55.3)	115 (7.9)	115 (7.9)	6,610 (2,998)	5,950 (2,699)	75 (121)
R3B/S3B	XSH/YSH	275/80R22.5	G/14	12.4 (31.5)	11.1 (28.2)	39.7 (100.8)	12.1 (30.7)	18.4 (46.7)	76.8 (495)	517 (321)	118 (53.5)	100 (6.9)	100 (6.9)	6,175 (2,801)	5,675 (2,574)	75 (121)
R3B/S3B	XRL/YRL	235/80R22.5	G/14	10.5 (26.7)	9.4 (23.9)	37.4 (95.0)	10.2 (25.9)	17.4 (44.2)	60 (387)	556 (345)	81 (37)	90 (6.2)	90 (6.2)	4,675 (2,121)	4,410 (2,000)	75 (121)
R3B/S3B	XSB/YSB	255/80R22.5	G/14	11.4 (29.0)	10.0 (25.4)	38.5 (97.8)	11.3 (28.7)	17.9 (45.5)	66 (429)	542 (337)	94 (43)	95 (6.6)	95 (6.6)	5,205 (2,361)	4,810 (2,182)	75 (121)
R3B/S3B	XWP/YWP	12R22.5	H/16	12.9 (32.8)	11.4 (29.0)	42.6 (108.2)	12.3 (31.2)	19.8 (50.3)	76 (491)	487 (303)	138 (63)	115 (7.9)	115 (7.9)	7,390 (3,352)	6,750 (3,062)	75 (121)
R3B/S3B	XTB/YTB	255/70R22.5	H/16	11.1 (28.2)	9.8 (24.9)	36.7 (93.2)	10.7 (27.2)	17.0 (43.2)	58 (380)	567 (352)	87 (39)	115 (7.9)	115 (7.9)	5,100 (2,313)	5,070 (2,300)	75 (121)
R3B/S3B	XNC/YNC	245/70R19.5	H/16	10.9 (27.7)	9.7 (24.6)	33.6 (85.3)	10.6 (26.9)	15.6 (39.6)	56.7 (365)	619 (385)	72 (32.7)	120 (8.3)	120 (8.3)	4,940 (2,245)	4,765 (2,161)	75 (121)
R3B/S3B	XSJ/YSJ	275/80R24.5	G/14	12.2 (31.0)	10.8 (27.4)	41.3 (105.0)	11.8 (30.0)	19.3 (49.0)	76.2 (491)	502 (312)	118 (53.5)	100 (6.9)	100 (6.9)	6,175 (2,801)	5,675 (2,574)	75 (121)

2004 GMT 560 T-SERIES

Michelin Code: R4L

TIRE TREAD NAME: XZA1

TREAD CODE	RPO	SIZE	LOAD RANGE/PLY RATING	MIN. SPACING OF DUALS in. (cm)	DIMENSIONS				GROSS CONTACT AREA sq. in. (sq. cm)	REVS PER mile (km)	TIRE WEIGHT lb. (kg)	MAX. PRESSURE		MAX. LOAD		MAX. SPEED mph (kmh)
					NO LOAD		LOADED					SINGLE psi (bar)	DUAL psi (bar)	SINGLE lb. (kg)	DUAL lb. (kg)	
					WIDTH in. (cm)	DIA. in. (cm)	WIDTH in. (cm)	SLR in. (cm)								
R3C	XWR	315/80R22.5	L/22	13.9 (35.3)	12.5 (31.8)	42.5 (108.0)	13.6 (34.5)	19.6 (49.8)	90 (581)	489 (304)	143 (65)	130 (9.0)	130 (9.0)	9,000 (4,082)	8,255 (3,744)	65 ⁽¹⁾ (105)

Michelin Code: R4L/S4L

TIRE TREAD NAME: XZA2

TREAD CODE	RPO	SIZE	LOAD RANGE/PLY RATING	MIN. SPACING OF DUALS in. (cm)	DIMENSIONS				GROSS CONTACT AREA sq. in. (sq. cm)	REVS PER mile (km)	TIRE WEIGHT lb. (kg)	MAX. PRESSURE		MAX. LOAD		MAX. SPEED mph (kmh)
					NO LOAD		LOADED					SINGLE psi (bar)	DUAL psi (bar)	SINGLE lb. (kg)	DUAL lb. (kg)	
					WIDTH in. (cm)	DIA. in. (cm)	WIDTH in. (cm)	SLR in. (cm)								
R3C/S3C	XWL/YWL	11R22.5	G/14	12.5 (31.8)	11.1 (28.2)	41.3 (104.9)	12.0 (30.5)	19.2 (48.8)	70 (452)	504 (313)	116 (53)	100 (6.9)	100 (6.9)	6,175 (2,801)	5,750 (2,608)	75 (121)
R3C/S3C	XSH/YSH	275/80R22.5	G/14	12.3 (31.2)	10.9 (27.7)	40.0 (101.6)	12.0 (30.5)	18.6 (47.2)	84 (546)	519 (323)	110 (50)	100 (6.9)	100 (6.9)	6,175 (2,801)	5,675 (2,574)	75 (121)
R3C/S3C	XWM/YWM	11R22.5	H/16	12.5 (31.8)	11.1 (28.2)	41.3 (104.9)	12.0 (30.5)	19.2 (48.8)	70 (452)	504 (313)	118 (54)	115 (7.9)	115 (7.9)	6,610 (2,998)	5,950 (2,699)	75 (121)

Michelin Code: S4L

TIRE TREAD NAME: XD2

TREAD CODE	RPO	SIZE	LOAD RANGE/PLY RATING	MIN. SPACING OF DUALS in. (cm)	DIMENSIONS				GROSS CONTACT AREA sq. in. (sq. cm)	REVS PER mile (km)	TIRE WEIGHT lb. (kg)	MAX. PRESSURE		MAX. LOAD		MAX. SPEED mph (kmh)
					NO LOAD		LOADED					SINGLE psi (bar)	DUAL psi (bar)	SINGLE lb. (kg)	DUAL lb. (kg)	
					WIDTH in. (cm)	DIA. in. (cm)	WIDTH in. (cm)	SLR in. (cm)								
S3D	YTB	255/70R22.5	H/16	11.5 (29.2)	10.2 (25.9)	37.2 (94.5)	10.9 (27.7)	17.4 (44.2)	63.9 (412)	558 (898)	101 (46)	115 (7.9)	115 (7.9)	5,510 (2,499)	5,070 (2,300)	75 (121)

⁽¹⁾ Max. speed may be increased to 75 mph (121 kmh) by adding 10 psi (.68 bar) to data book recommended pressure. Do not exceed maximum pressure capacity of wheel. Consult wheel manufacturer. Exceeding the lawful speed limit is neither recommended nor endorsed.

2004 GMT 560 T-SERIES

Michelin Code: S4L

TIRE TREAD NAME: XDE M/S

TREAD CODE	RPO	SIZE	LOAD RANGE/PLY RATING	MIN. SPACING OF DUALS in. (cm)	DIMENSIONS				GROSS CONTACT AREA sq. in. (sq. cm)	REVS PER mile (km)	TIRE WEIGHT lb. (kg)	MAX. PRESSURE		MAX. LOAD		MAX. SPEED mph (kmh)
					NO LOAD		LOADED					SINGLE psi (bar)	DUAL psi (bar)	SINGLE lb. (kg)	DUAL lb. (kg)	
					WIDTH in. (cm)	DIA. in. (cm)	WIDTH in. (cm)	SLR in. (cm)								
S3J	YRL	235/80R22.5	G/14	10.4 (26.4)	9.3 (23.6)	37.4 (95.0)	10.2 (25.9)	17.4 (44.2)	60 (387)	553 (345)	83 (38)	90 (6.2)	90 (6.2)	4,675 (2,121)	4,410 (2,000)	75 (121)
S3J	YSB	255/80R22.5	G/14	11.3 (28.7)	10.0 (25.4)	38.4 (97.5)	10.9 (27.7)	17.8 (45.2)	66 (426)	540 (336)	92 (42)	95 (6.6)	95 (6.6)	5,205 (2,361)	4,810 (2,182)	75 (121)
S3J	YNC	245/70R19.5	H/16	11.0 (27.9)	9.8 (24.9)	33.8 (85.9)	10.5 (26.7)	15.7 (39.9)	52.4 (338)	614 (382)	75 (34)	120 (8.3)	120 (8.3)	4,940 (2,245)	4,765 (2,161)	75 (121)
S3J	YSH	275/80R22.5	G/14	12.4 (31.5)	11.1 (28.2)	40.5 (102.9)	12.1 (30.7)	18.7 (47.5)	77 (497)	513 (318)	118 (53)	100 (6.9)	100 (6.9)	6,175 (2,801)	5,750 (2,608)	75 (121)
S3J	YUE	9R22.5	F/12	9.8 (24.9)	8.6 (21.8)	37.9 (96.3)	9.6 (24.4)	17.9 (45.5)	58 (377)	548 (341)	82 (37)	95 (6.6)	95 (6.6)	4,540 (2,059)	4,300 (1,950)	75 (121)
S3J	YWJ	10R22.5	F/12	10.8 (27.4)	10.8 (27.4)	40.2 (102.1)	10.5 (26.7)	18.6 (47.2)	68 (439)	517 (321)	98 (44)	95 (6.6)	95 (6.6)	5,150 (2,336)	4,740 (2,150)	75 (121)
S3J	YWK	10R22.5	G/14	10.8 (27.4)	10.8 (27.4)	40.2 (102.1)	10.5 (26.7)	18.6 (47.2)	68 (439)	519 (323)	101 (46)	105 (7.2)	105 (7.2)	5,680 (2,576)	5,080 (2,304)	75 (121)
S3J	YWL	11R22.5	G/14	11.1 (28.2)	11.1 (28.2)	41.7 (105.9)	12.1 (30.7)	19.4 (49.3)	80 (516)	499 (310)	120 (54)	100 (6.9)	100 (6.9)	6,175 (2,801)	5,750 (2,608)	75 (121)
S3J	YWM	11R22.5	H/16	12.2 (31.0)	11.2 (28.4)	41.8 (106.2)	12.1 (30.7)	19.4 (49.3)	79 (515)	499 (310)	121 (55)	115 (7.9)	115 (7.9)	6,610 (2,998)	5,950 (2,699)	75 (121)

2004 GMT 560 T-SERIES

Michelin Code: S4L

TIRE TREAD NAME: XDA2

TREAD CODE	RPO	SIZE	LOAD RANGE/PLY RATING	MIN. SPACING OF DUALS in. (cm)	DIMENSIONS				GROSS CONTACT AREA sq. in. (sq. cm)	REVS PER mile (km)	TIRE WEIGHT lb. (kg)	MAX. PRESSURE		MAX. LOAD		MAX. SPEED mph (kmh)
					NO LOAD		LOADED					SINGLE psi (bar)	DUAL psi (bar)	SINGLE lb. (kg)	DUAL lb. (kg)	
					WIDTH in. (cm)	DIA. in. (cm)	WIDTH in. (cm)	SLR in. (cm)								
S3D	YSH	275/80R22.5	G/14	12.3 (31.2)	10.9 (27.7)	40.7 (103.4)	11.9 (30.2)	18.9 (48.0)	69 (450)	510 (317)	119 (54)	100 (6.9)	100 (6.9)	6,175 (2,801)	5,675 (2,574)	75 (121)
S3D	YWL	11R22.5	G/14	12.6 (32.0)	11.1 (28.2)	41.9 (106.4)	11.9 (30.2)	19.5 (49.5)	75 (490)	495 (307)	125 (57)	100 (6.9)	100 (6.9)	6,175 (2,801)	5,750 (2,608)	75 (121)

Michelin Code: S4L

TIRE TREAD NAME: XDY-2

TREAD CODE	RPO	SIZE	LOAD RANGE/PLY RATING	MIN. SPACING OF DUALS in. (cm)	DIMENSIONS				GROSS CONTACT AREA sq. in. (sq. cm)	REVS PER mile (km)	TIRE WEIGHT lb. (kg)	MAX. PRESSURE		MAX. LOAD		MAX. SPEED mph (kmh)
					NO LOAD		LOADED					SINGLE psi (bar)	DUAL psi (bar)	SINGLE lb. (kg)	DUAL lb. (kg)	
					WIDTH in. (cm)	DIA. in. (cm)	WIDTH in. (cm)	SLR in. (cm)								
S3T	YWL	11R22.5	G/14	12.7 (32.3)	11.3 (28.7)	42.0 (106.7)	12.5 (31.8)	19.6 (49.8)	84 (542)	493 (306)	138 (63)	105 (7.2)	105 (7.2)	6,175 (2,801)	5,840 (2,649)	65 ⁽¹⁾ (105)
S3T	YWM	11R22.5	H/16	12.7 (32.3)	11.3 (28.7)	42.0 (106.7)	12.5 (31.8)	19.6 (49.8)	83 (536)	493 (306)	138 (63)	120 (8.3)	120 (8.3)	6,610 (2,998)	6,005 (2,724)	65 ⁽¹⁾ (105)

⁽¹⁾ Max. speed may be increased to 75 mph (121 kmh) by adding 5 psi (.34 bar) to data book recommended pressure. As a result of adding 5 psi (.34 bar) to obtain 75 mph (121 kmh) rating, the tire capacity will decrease by 12%. Do not exceed maximum pressure capacity of wheel. Consult wheel manufacturer. Exceeding the lawful speed limit is neither recommended nor endorsed.

2004 GMT 560 T-SERIES

Michelin Code: S4L

TIRE TREAD NAME: XDA-HT

TREAD CODE	RPO	SIZE	LOAD RANGE/PLY RATING	MIN. SPACING OF DUALS in. (cm)	DIMENSIONS				GROSS CONTACT AREA sq. in. (sq. cm)	REVS PER mile (km)	TIRE WEIGHT lb. (kg)	MAX. PRESSURE		MAX. LOAD		MAX. SPEED mph (kmh)
					NO LOAD		LOADED					SINGLE psi (bar)	DUAL psi (bar)	SINGLE lb. (kg)	DUAL lb. (kg)	
					WIDTH in. (cm)	DIA. in. (cm)	WIDTH in. (cm)	SLR in. (cm)								
S3H	YWL	11R22.5	G/14	12.6 (32.0)	11.2 (28.4)	42.0 (106.7)	12.0 (30.5)	19.5 (49.5)	79.0 (510)	495 (308)	135 (61)	100 (6.9)	100 (6.9)	6,175 (2,801)	5,750 (2,608)	75 (121)
S3H	YSH	275/80R22.5	G/14	12.3 (31.2)	10.9 (27.7)	40.8 (103.6)	12.0 (30.5)	19.0 (48.3)	75.0 (484)	509 (316)	126 (57)	100 (6.9)	100 (6.9)	6,175 (2,801)	5,675 (2,574)	75 (121)
S3H	YSJ	275/80R24.5	G/14	12.3 (31.2)	10.9 (27.7)	42.0 (106.7)	11.7 (29.7)	19.5 (49.5)	75.0 (484)	495 (308)	130 (59)	100 (6.9)	100 (6.9)	6,175 (2,801)	5,675 (2,574)	75 (121)

Michelin Code: S3E

TIRE TREAD NAME: XDE A/T

TREAD CODE	RPO	SIZE	LOAD RANGE/PLY RATING	MIN. SPACING OF DUALS in. (cm)	DIMENSIONS				GROSS CONTACT AREA sq. in. (sq. cm)	REVS PER mile (km)	TIRE WEIGHT lb. (kg)	MAX. PRESSURE		MAX. LOAD		MAX. SPEED mph (kmh)
					NO LOAD		LOADED					SINGLE psi (bar)	DUAL psi (bar)	SINGLE lb. (kg)	DUAL lb. (kg)	
					WIDTH in. (cm)	DIA. in. (cm)	WIDTH in. (cm)	SLR in. (cm)								
S3E	YWP	12R22.5	H/16	13.0 (33.0)	11.3 (28.7)	43.0 (109.2)	12.4 (31.5)	19.8 (50.3)	79 (510)	486 (302)	156 (70.8)	115 (7.9)	115 (7.9)	7,390 (3,352)	6,750 (3,062)	65 ⁽¹⁾ (105)
S3E	YWM	11R22.5	H/16	13.0 (33.0)	11.3 (28.7)	42.0 (106.7)	12.4 (31.5)	19.6 (49.8)	78.8 (508)	494 (307)	141 (63.9)	115 (7.9)	115 (7.9)	6,610 (2,998)	5,950 (2,699)	65 ⁽¹⁾ (105)

⁽¹⁾ Max. speed may be increased to 75 mph (121 kmh) by adding 5 psi (.34 bar) to data book recommended pressure. As a result of adding 5 psi (.34 bar) to obtain 75 mph (121 kmh) rating, the tire capacity will decrease by 12%. Do not exceed maximum pressure capacity of wheel. Consult wheel manufacturer. Exceeding the lawful speed limit is neither recommended nor endorsed.

2004 GMT 560 T-SERIES

Michelin Code: R4L/S4L

TIRE TREAD NAME: XZY-2

TREAD CODE	RPO	SIZE	LOAD RANGE/PLY RATING	MIN. SPACING OF DUALS in. (cm)	DIMENSIONS				GROSS CONTACT AREA sq. in. (sq. cm)	REVS PER mile (km)	TIRE WEIGHT lb. (kg)	MAX. PRESSURE		MAX. LOAD		MAX. SPEED mph (kmh)
					NO LOAD		LOADED					SINGLE psi (bar)	DUAL psi (bar)	SINGLE lb. (kg)	DUAL lb. (kg)	
					WIDTH in. (cm)	DIA. in. (cm)	WIDTH in. (cm)	SLR in. (cm)								
R3K/S3K	XWL/YWL	11R22.5	G/14	12.8 (32.5)	11.3 (28.7)	41.6 (105.7)	12.5 (31.8)	19.5 (49.5)	81 (523)	497 (309)	126 (57)	105 (7.2)	105 (7.2)	6,175 (2,801)	5,840 (2,649)	65 ⁽¹⁾ (105)
R3K/S3K	XWM/YWM	11R22.5	H/16	12.8 (32.5)	11.3 (28.7)	41.6 (105.7)	12.5 (31.8)	19.5 (49.5)	77 (497)	497 (309)	134 (61)	120 (8.3)	120 (8.3)	6,610 (2,998)	6,005 (2,724)	65 ⁽¹⁾ (105)
R3K/S3K	XWP/YWP	12R22.5	H/16	12.8 (32.5)	11.3 (28.7)	42.6 (108.2)	12.5 (31.8)	19.8 (50.3)	85 (545)	487 (303)	146 (66)	120 (8.3)	120 (8.3)	7,390 (3,352)	6,780 (3,075)	65 ⁽¹⁾ (105)

Michelin Code: S4L

TIRE TREAD NAME: XDN

TREAD CODE	RPO	SIZE	LOAD RANGE/PLY RATING	MIN. SPACING OF DUALS in. (cm)	DIMENSIONS				GROSS CONTACT AREA sq. in. (sq. cm)	REVS PER mile (km)	TIRE WEIGHT lb. (kg)	MAX. PRESSURE		MAX. LOAD		MAX. SPEED mph (kmh)
					NO LOAD		LOADED					SINGLE psi (bar)	DUAL psi (bar)	SINGLE lb. (kg)	DUAL lb. (kg)	
					WIDTH in. (cm)	DIA. in. (cm)	WIDTH in. (cm)	SLR in. (cm)								
S3R	YWL	11R22.5	G/14	12.7 (32.3)	11.3 (28.7)	41.6 (105.7)	11.3 (28.7)	19.4 (49.3)	80.9 (522)	499 (310)	126 (57)	100 (6.9)	100 (6.9)	6,175 (2,801)	5,750 (2,608)	75 (121)
S3R	YWM	11R22.5	H/16	12.7 (32.3)	11.3 (28.7)	41.6 (105.7)	11.3 (28.7)	19.4 (49.3)	80.9 (522)	499 (310)	126 (57)	115 (7.9)	115 (7.9)	6,610 (2,998)	5,950 (2,699)	75 (121)
S3R	YWP	12R22.5	H/16	13.3 (33.8)	11.8 (30.0)	43.0 (109.2)	13 (33.0)	20.0 (50.8)	91.3 (589)	483 (300)	162 (73)	115 (7.9)	115 (7.9)	7,390 (3,352)	6,610 (2,998)	75 (121)

⁽¹⁾ Max. speed may be increased to 75 mph (121 kmh) by adding 5 psi (.34 bar) to data book recommended pressure. As a result of adding 5 psi (.34 bar) to obtain 75 mph (121 kmh) rating, the tire capacity will decrease by 12%. Do not exceed maximum pressure capacity of wheel. Consult wheel manufacturer. Exceeding the lawful speed limit is neither recommended nor endorsed.

2004 GMT 560 T-SERIES

Michelin Code: R4L/S4L

TIRE TREAD NAME: XRV

TREAD CODE	RPO	SIZE	LOAD RANGE/PLY RATING	MIN. SPACING OF DUALS in. (cm)	DIMENSIONS				GROSS CONTACT AREA sq. in. (sq. cm)	REVS PER mile (km)	TIRE WEIGHT lb. (kg)	MAX. PRESSURE		MAX. LOAD		MAX. SPEED mph (kmh)
					NO LOAD		LOADED					SINGLE psi (bar)	DUAL psi (bar)	SINGLE lb. (kg)	DUAL lb. (kg)	
					WIDTH in. (cm)	DIA. in. (cm)	WIDTH in. (cm)	SLR in. (cm)								
R3S/S3S	XSB/YSB	255/80R22.5	G/15	11.2 (28.4)	9.9 (25.1)	38.2 (97.0)	10.8 (27.4)	17.8 (45.2)	69 (445)	541 (336)	89 (40.4)	105 (7.2)	105 (7.2)	5,205 (2,361)	4,810 (2,182)	75 (121)

2004 GMT 560 T-SERIES

Bridgestone Radial Tires

FOR BRIDGESTONE BRAND TIRES YOU MUST SPECIFY R4N FOR FRONT TIRES AND S4N FOR THE REAR TIRES.

Bridgestone Code: R4N/S4N

TIRE TREAD NAME: R250F (With Side Wall Protector Rib)

TREAD CODE	RPO	SIZE	LOAD RANGE/PLY RATING	MIN. SPACING OF DUALS in. (cm)	DIMENSIONS				REVS PER mile (km)	TIRE WEIGHT lb. (kg)	MAX. PRESSURE		MAX. LOAD		MAX. SPEED mph (kmh)
					NO LOAD		LOADED				SINGLE psi (bar)	DUAL psi (bar)	SINGLE lb. (kg)	DUAL lb. (kg)	
					WIDTH in. (cm)	DIA. in. (cm)	WIDTH in. (cm)	SLR in. (cm)							
R3B/S3B	XRN/YRN	295/75R22.5	G/14	13.2 (33.5)	11.2 (28.4)	40.2 (102.1)	12.2 (31.0)	18.8 (47.8)	517 (321)	116 (53)	110 (7.6)	100 (6.9)	6,175 (2,801)	5,675 (2,574)	75 (121)
R3B/S3B	XUE/YUE	9R22.5	F/12	10.3 (26.6)	8.9 (22.6)	38.3 (97.3)	9.7 (24.6)	18.0 (45.7)	542 (337)	88 (40)	105 (7.2)	95 (6.6)	4,500 (2,041)	3,950 (1,792)	75 (121)
R3B/S3B	XWL/YWL	11R22.5	G/14	12.5 (31.8)	10.8 (27.4)	41.3 (104.9)	11.8 (30.0)	19.3 (49.0)	503 (313)	121 (55)	105 (7.2)	105 (7.2)	6,175 (2,801)	5,750 (2,608)	75 (121)
R3B/S3B	XTQ/YTQ	245/75R22.5	G/14	11.0 (27.9)	9.6 (24.4)	37.4 (95.0)	10.5 (26.7)	17.6 (44.7)	555 (345)	92 (42)	110 (7.6)	100 (6.9)	4,675 (2,121)	4,300 (1,950)	75 (121)
R3B/S3B	XTU/YTU	265/75R22.5	G/14	11.6 (29.5)	10.2 (25.9)	38.4 (97.5)	11.1 (28.2)	18.0 (45.7)	541 (336)	98 (44)	110 (7.6)	100 (6.9)	5,205 (2,361)	4,805 (2,180)	75 (121)

Bridgestone Code: R4N/S4N

TIRE TREAD NAME: R293

TREAD CODE	RPO	SIZE	LOAD RANGE/PLY RATING	MIN. SPACING OF DUALS in. (cm)	DIMENSIONS				REVS PER mile (km)	TIRE WEIGHT lb. (kg)	MAX. PRESSURE		MAX. LOAD		MAX. SPEED mph (kmh)
					NO LOAD		LOADED				SINGLE psi (bar)	DUAL psi (bar)	SINGLE lb. (kg)	DUAL lb. (kg)	
					WIDTH in. (cm)	DIA. in. (cm)	WIDTH in. (cm)	SLR in. (cm)							
R3C/S3C	XWL/YWL	11R22.5	G/14	12.5 (31.7)	10.6 (26.9)	41.3 (104.9)	11.7 (29.7)	19.3 (49.0)	503 (313)	119 (54)	105 (7.2)	105 (7.2)	6,175 (2,801)	5,750 (2,608)	75 (121)

2004 GMT 560 T-SERIES

Bridgestone Code: R4N/S4N

TIRE TREAD NAME: R294-LP

TREAD CODE	RPO	SIZE	LOAD RANGE/PLY RATING	MIN. SPACING OF DUALS in. (cm)	DIMENSIONS				REVS PER mile (km)	TIRE WEIGHT lb. (kg)	MAX. PRESSURE		MAX. LOAD		MAX. SPEED mph (kmh)
					NO LOAD		LOADED				SINGLE psi (bar)	DUAL psi (bar)	SINGLE lb. (kg)	DUAL lb. (kg)	
					WIDTH in. (cm)	DIA. in. (cm)	WIDTH in. (cm)	SLR in. (cm)							
R3C/S3C	XTB/YTB	255/70R22.5	H/16	11.0 (27.9)	9.9 (25.1)	36.7 (93.2)	10.6 (26.9)	17.1 (43.4)	567 (352)	92 (42)	120 (8.3)	120 (8.3)	5,510 (2,499)	5,070 (2,300)	75 (121)

Bridgestone Code: R4N/S4N

TIRE TREAD NAME: R299-LP

TREAD CODE	RPO	SIZE	LOAD RANGE/PLY RATING	MIN. SPACING OF DUALS in. (cm)	DIMENSIONS				REVS PER mile (km)	TIRE WEIGHT lb. (kg)	MAX. PRESSURE		MAX. LOAD		MAX. SPEED mph (kmh)
					NO LOAD		LOADED				SINGLE psi (bar)	DUAL psi (bar)	SINGLE lb. (kg)	DUAL lb. (kg)	
					WIDTH in. (cm)	DIA. in. (cm)	WIDTH in. (cm)	SLR in. (cm)							
R3C/S3C	XRN/YRN	295/75R22.5	G/14	13.2 (33.5)	11.3 (28.7)	40.1 (102.0)	12.0 (30.5)	18.7 (47.5)	518 (322)	115 (52)	110 (7.6)	100 (6.9)	6,175 (2,801)	5,675 (2,574)	75 (121)
R3C/S3C	XRV/YRV	285/75R24.5	G/14	12.5 (31.7)	11.2 (28.4)	41.3 (105.0)	11.7 (29.7)	19.4 (49.2)	503 (312)	118 (53)	110 (7.6)	100 (6.9)	6,175 (2,801)	5,675 (2,574)	75 (121)

Bridgestone Code: R4N/S4N

TIRE TREAD NAME: M711

TREAD CODE	RPO	SIZE	LOAD RANGE/PLY RATING	MIN. SPACING OF DUALS in. (cm)	DIMENSIONS				REVS PER mile (km)	TIRE WEIGHT lb. (kg)	MAX. PRESSURE		MAX. LOAD		MAX. SPEED mph (kmh)
					NO LOAD		LOADED				SINGLE psi (bar)	DUAL psi (bar)	SINGLE lb. (kg)	DUAL lb. (kg)	
					WIDTH in. (cm)	DIA. in. (cm)	WIDTH in. (cm)	SLR in. (cm)							
S3D	YWL	11R22.5	G/14	12.5 (31.8)	10.7 (27.2)	41.9 (106.4)	11.8 (30.0)	19.7 (50.0)	496 (308)	125 (57)	105 (7.2)	105 (7.2)	6,175 (2,801)	5,750 (2,608)	75 (121)

2004 GMT 560 T-SERIES

Bridgestone Code: R4N/S4N

TIRE TREAD NAME: M726

TREAD CODE	RPO	SIZE	LOAD RANGE/PLY RATING	MIN. SPACING OF DUALS in. (cm)	DIMENSIONS				REVS PER mile (km)	TIRE WEIGHT lb. (kg)	MAX. PRESSURE		MAX. LOAD		MAX. SPEED mph (kmh)
					NO LOAD		LOADED				SINGLE psi (bar)	DUAL psi (bar)	SINGLE lb. (kg)	DUAL lb. (kg)	
					WIDTH in. (cm)	DIA. in. (cm)	WIDTH in. (cm)	SLR in. (cm)							
S3H	YRN	295/75R22.5	G/14	11.0 (27.9)	10.3 (28.2)	37.3 (94.7)	11.1 (28.1)	17.3 (43.9)	507 (315)	120 (55)	110 (7.6)	100 (6.9)	6,175 (2,801)	5,675 (2,574)	75 (121)

Bridgestone Code: R4N/S4N

TIRE TREAD NAME: M724

TREAD CODE	RPO	SIZE	LOAD RANGE/PLY RATING	MIN. SPACING OF DUALS in. (cm)	DIMENSIONS				REVS PER mile (km)	TIRE WEIGHT lb. (kg)	MAX. PRESSURE		MAX. LOAD		MAX. SPEED mph (kmh)
					NO LOAD		LOADED				SINGLE psi (bar)	DUAL psi (bar)	SINGLE lb. (kg)	DUAL lb. (kg)	
					WIDTH in. (cm)	DIA. in. (cm)	WIDTH in. (cm)	SLR in. (cm)							
R3M/S3M	XTY/YTY	245/70R19.5	G/14	11.0 (27.9)	9.7 (24.6)	33.5 (85.1)	10.4 (26.4)	15.7 (39.9)	619 (385)	80 (36)	110 (7.6)	110 (7.6)	4,540 (2,059)	4,300 (1,950)	75 (121)

ELECTRICAL

**NOT AVAILABLE AT
TIME OF PUBLICATION**