

VEHICLE AND FRAME HEIGHT CHARTS

S/T MIDSIZE TRUCK

S/T 15403 Midsize Regular Cab Pickup	1
Heights (To Ground).....	1
111.0" Wheelbase – S 15403.....	2
111.0" Wheelbase – T 15403	2
S/T 15653 Midsize Extended Cab Pickup	3
Heights (To Ground).....	3
126.0" Wheelbase – S 15653.....	4
126.0" Wheelbase – T 15653	4
S/T 15643 Midsize Crew Cab Pickup	5
Heights (To Ground).....	5
126.0" Wheelbase – S 15643.....	6
126.0" Wheelbase – T 15643	6
S/T 15603 Midsize Chassis Cab	7
Heights (To Ground).....	7
126.0" Wheelbase – S 15603.....	8

C/K FULLSIZE TRUCK

C/K Fullsize Pickups	9
Heights (To Ground).....	9
C/K Fullsize Chassis-Cabs	10
Heights (To Ground).....	10
119.0" Wheelbase – C 15703.....	11
133.0" Wheelbase – C 15903.....	11
143.5" Wheelbase – C 15753.....	11
157.5" Wheelbase – C 15953.....	12
143.5" Wheelbase – C 15543.....	12

VEHICLE AND FRAME HEIGHT CHARTS

C/K FULLSIZE TRUCK – (Continued)

153.0" Wheelbase – C 15743.....	12
119.0" Wheelbase – K 15703.....	13
133.0" Wheelbase – K 15903.....	13
143.5" Wheelbase – K 15753.....	14
157.5" Wheelbase – K 15953.....	15
153.0" Wheelbase – K 15543.....	15

C/K 25000 Fullsize Pickups & Chassis-Cabs

133.0" Wheelbase – C 25903.....	16
143.5" Wheelbase – C 25753.....	16
157.5" Wheelbase – C 25953.....	17
143.5" Wheelbase – C 25743.....	17
157.5" Wheelbase – C 25943.....	17
133.0" Wheelbase – K 25903.....	18
143.5" Wheelbase – K 25753.....	18
157.5" Wheelbase – K 25953.....	19
153.0" Wheelbase – K 25743.....	19
167.0" Wheelbase – K 25943.....	20

C/K 35000 Fullsize Pickups & Chassis-Cabs

157.5" Wheelbase – C 35953.....	20
167.0" Wheelbase – C 35943.....	20
133.0" Wheelbase – K 35903.....	21
157.5" Wheelbase – K 35953.....	21
167.0" Wheelbase – K 35943.....	22

C/K 36000 Fullsize Chassis-Cabs

137.0" Wheelbase – C 36003.....	22
---------------------------------	----

VEHICLE AND FRAME HEIGHT CHARTS

C/K FULLSIZE TRUCK – (Continued)

161.5" Wheelbase – C 36053.....	22
161.5" Wheelbase – C 36403.....	23
137.0" Wheelbase – K 36003.....	23
161.5" Wheelbase – K 36053.....	23
161.5" Wheelbase – K 36403.....	24

C/K 15000/25000 Fullsize Utility25

Heights (To Ground).....	25
116.0" Wheelbase – C 15706.....	26
130.0" Wheelbase – C 15906.....	27
116.0" Wheelbase – K 15706.....	28
130.0" Wheelbase – K 15906.....	29
130.0" Wheelbase – C 25906.....	29
130.0" Wheelbase – K 25906.....	30

C/K 15000/25000 Fullsize Avalanche31

Heights (To Ground).....	31
130.0" Wheelbase – C 15936.....	32
130.0" Wheelbase – K 15936.....	32
130.0" Wheelbase – K 25936.....	32

G/H FULLSIZE VAN

G/H Full Body Van33

Heights (To Ground).....	33
135.0" Wheelbase – G 13405	34
135.0" Wheelbase – G 13406	34
135.0" Wheelbase – H 13405.....	35
135.0" Wheelbase – H 13406.....	35

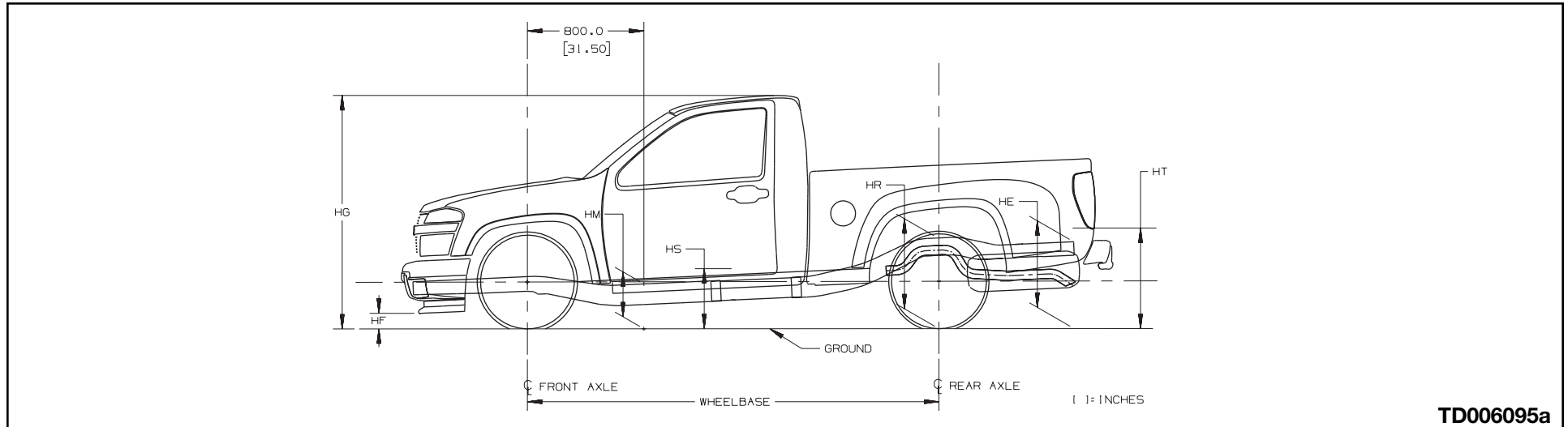
VEHICLE AND FRAME HEIGHT CHARTS

G/H FULLSIZE VAN – (Continued)

135.0" Wheelbase – G 23405	36
135.0" Wheelbase – G 23406	36
155.0" Wheelbase – G 23705	37
135.0" Wheelbase – H 23405.....	37
135.0" Wheelbase – G 33405	38
135.0" Wheelbase – G 33406	38
155.0" Wheelbase – G 33705	38
155.0" Wheelbase – G 33706	39
G/H Fullsize Cutaway Van	40
Heights (To Ground)	40
139.0" Wheelbase – G 33503	41
159.0" Wheelbase – G 33803	41
177.0" Wheelbase – G 33903	42

VEHICLE AND FRAME HEIGHT CHARTS

S/T 15403 Midsize Regular Cab Pickup



TD006095a

Heights (To Ground)

- HFBottom of Front Air Deflector or Bumper
- HGRoof Height
- HMNormal Top of Frame
- HPTop of Tailgate (Down)
- HRTop of Frame at Centerline of Rear Axle
- HSStep H-Point-Front
- HS2Step H-Point-Second
- HTRear Cargo Load Height

NOTE: All weights are in pounds, dimensions are in inches and angles are in degrees.

VEHICLE AND FRAME HEIGHT CHARTS

S 15403		111.0" Wheelbase				Frame Heights at Minimum Curb Weight								Frame Heights and Angular Dimensions are shown at Maximum GAWR Front/Rear									
GVW/Tire	Minimum Curb Weight			GAWR		HE	HF	HG	HM	HP	HR	HS	HS2	HT	HE	HF	HG	HM	HP	HR	HS	HS2	HT
	Frnt	Rr	Ttl	Frnt	Rr																		
¹⁾ 4400 & ZQ8 P235/50R17	1896	1461	3357	2533	2447	—	9.4	63.1	13.3	—	23.7	16.9	—	25.8	—	7.2	61.5	11.4	—	21.0	15.2	—	21.9
¹⁾ 4400 & ZQ8 P235/50R18	1896	1461	3357	2533	2447	—	10.0	63.8	13.9	—	24.3	17.6	—	26.5	—	7.9	62.1	12.1	—	21.7	15.8	—	22.6
²⁾ 4850 & Z85 P225/75R15	1823	1448	3271	2533	2896	—	11.4	65.5	15.5	—	26.1	19.2	—	28.5	—	9.2	63.0	13.1	—	22.4	16.8	—	23.1
²⁾ 4850 & Z85 P205/75R15	1823	1448	3271	2533	2896	—	10.9	65.0	15.0	—	25.7	18.7	—	28.0	—	8.7	62.5	12.6	—	21.9	16.3	—	22.5
²⁾ 5150 & Z71 P265/75R15	1832	1517	3349	2753	2896	—	14.7	69.0	18.9	—	29.8	22.7	—	32.2	—	11.9	66.5	16.3	—	26.3	20.2	—	27.8

T 15403		111.0" Wheelbase				Frame Heights at Minimum Curb Weight								Frame Heights and Angular Dimensions are shown at Maximum GAWR Front/Rear									
GVW/Tire	Minimum Curb Weight			GAWR		HE	HF	HG	HM	HP	HR	HS	HS2	HT	HE	HF	HG	HM	HP	HR	HS	HS2	HT
	Frnt	Rr	Ttl	Frnt	Rr																		
¹⁾ 5150 & Z85 P235/75R15	2049	1610	3659	2753	2896	—	13.9	68.2	18.1	—	28.9	21.9	—	31.3	—	11.8	66.1	16.0	—	25.7	19.8	—	26.9
²⁾ 5150 & Z71 P265/75R15	2074	1640	3714	2753	2896	—	14.6	68.9	18.8	—	29.7	22.6	—	32.1	—	12.6	66.9	16.8	—	26.5	20.6	—	27.7

NOTE: Front coil springs, torsion bars and adjusters are computer selected based on model options and calculated sprung curb weight. Actual heights may vary due to production tolerances.

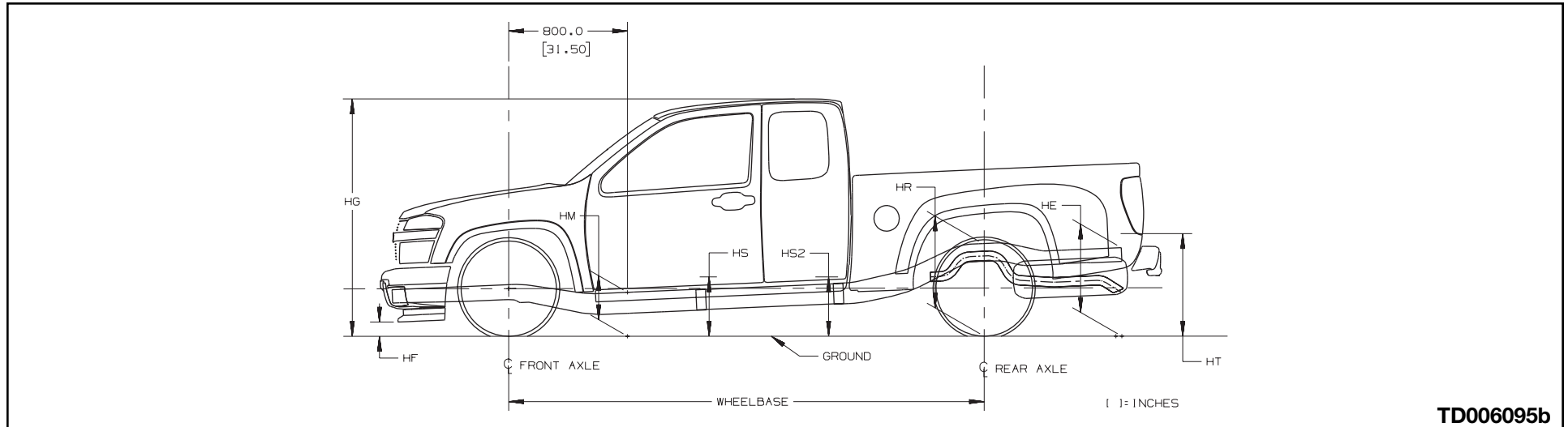
1) Base GVWR — contains minimum equipment required

2) Optional GVWR — contains minimum equipment required

(—) = not applicable for this model

VEHICLE AND FRAME HEIGHT CHARTS

S/T 15653 Midsize Extended Cab Pickup



TD006095b

Heights (To Ground)

- HFBottom of Front Air Deflector or Bumper
- HGRoof Height
- HMNormal Top of Frame
- HPTop of Tailgate (Down)
- HRTop of Frame at Centerline of Rear Axle
- HSStep H-Point-Front
- HS2Step H-Point-Second
- HTRear Cargo Load Height

NOTE: All weights are in pounds, dimensions are in inches and angles are in degrees.

VEHICLE AND FRAME HEIGHT CHARTS

S 15653		126.0" Wheelbase				Frame Heights at Minimum Curb Weight								Frame Heights and Angular Dimensions are shown at Maximum GAWR Front/Rear									
GVW/Tire	Minimum Curb Weight			GAWR		HE	HF	HG	HM	HP	HR	HS	HS2	HT	HE	HF	HG	HM	HP	HR	HS	HS2	HT
	Frnt	Rr	Ttl	Frnt	Rr																		
¹⁾ 4600 & ZQ8 P235/50R17	1945	1602	3547	2533	2447	—	9.5	63.3	13.2	—	23.7	16.8	17.1	25.4	—	7.5	61.6	11.4	—	21.2	15.0	15.3	22.4
¹⁾ 4600 & ZQ8 P235/50R18	1945	1602	3547	2533	2447	—	10.1	64.0	13.8	—	24.3	17.4	17.7	26.0	—	8.2	62.3	12.1	—	21.9	15.7	16.0	23.1
²⁾ 5000 & Z85 P225/75R15	1871	1593	3464	2533	2896	—	11.5	65.6	15.4	—	26.1	19.0	19.4	27.9	—	9.5	63.3	13.2	—	22.6	16.7	17.0	23.6
²⁾ 5000 & Z85 P205/75R15	1871	1593	3464	2533	2896	—	11.1	65.1	14.9	—	25.6	18.6	18.9	27.4	—	9.0	62.8	12.7	—	22.1	16.2	16.5	23.1
²⁾ 5300 & Z71 P265/75R15	1889	1673	3562	2753	2896	—	15.0	68.8	18.7	—	29.1	22.2	22.5	30.8	—	12.4	66.0	16.0	—	25.5	19.5	19.7	26.7

T 15653		126.0" Wheelbase				Frame Heights at Minimum Curb Weight								Frame Heights and Angular Dimensions are shown at Maximum GAWR Front/Rear									
GVW/Tire	Minimum Curb Weight			GAWR		HE	HF	HG	HM	HP	HR	HS	HS2	HT	HE	HF	HG	HM	HP	HR	HS	HS2	HT
	Frnt	Rr	Ttl	Frnt	Rr																		
¹⁾ 5300 & Z85 P235/75R15	2200	1649	3849	2753	2896	—	14.1	67.8	17.8	—	28.1	21.3	21.6	29.7	—	12.7	65.5	15.8	—	24.6	19.1	19.2	25.4
¹⁾ 5300 & Z71 P265/75R15	2224	1679	3903	2753	2896	—	14.9	68.5	18.5	—	28.7	22.0	22.2	30.4	—	13.5	66.3	16.6	—	25.3	19.9	20.0	26.1

NOTE: Front coil springs, torsion bars and adjusters are computer selected based on model options and calculated sprung curb weight. Actual heights may vary due to production tolerances.

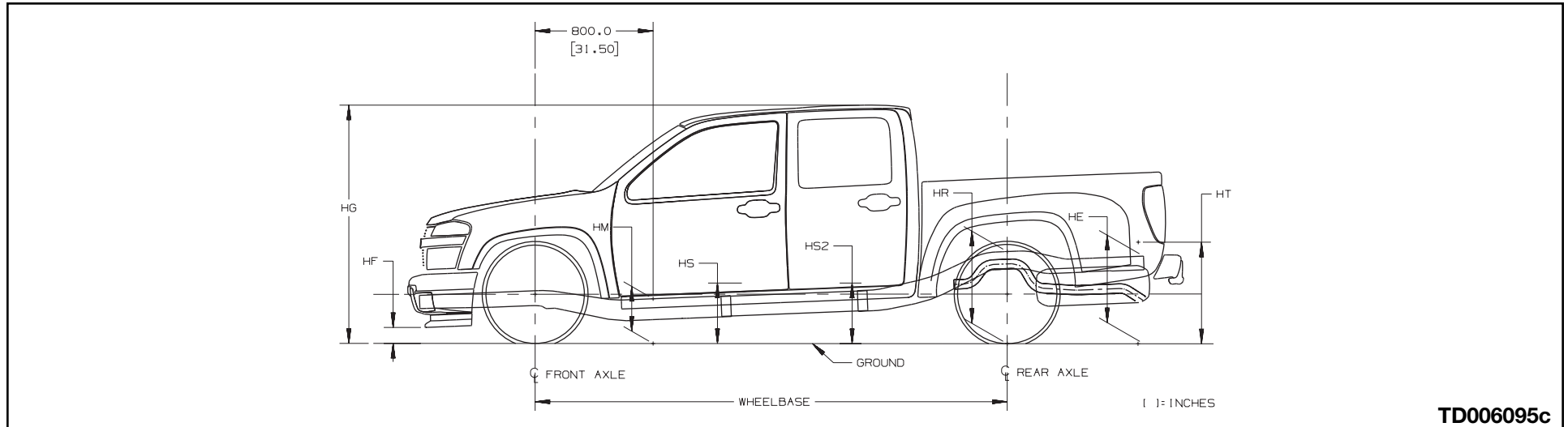
1) Base GVWR — contains minimum equipment required

2) Optional GVWR — contains minimum equipment required

(—) = not applicable for this model

VEHICLE AND FRAME HEIGHT CHARTS

S/T 15643 Midsize Crew Cab Pickup



Heights (To Ground)

- HFBottom of Front Air Deflector or Bumper
- HGRoof Height
- HMNormal Top of Frame
- HPTop of Tailgate (Down)
- HRTop of Frame at Centerline of Rear Axle
- HSStep H-Point-Front
- HS2Step H-Point-Second
- HTRear Cargo Load Height

NOTE: All weights are in pounds, dimensions are in inches and angles are in degrees.

VEHICLE AND FRAME HEIGHT CHARTS

S 15643		126.0" Wheelbase				Frame Heights at Minimum Curb Weight										Frame Heights and Angular Dimensions are shown at Maximum GAWR Front/Rear							
GVW/Tire	Minimum Curb Weight			GAWR		HE	HF	HG	HM	HP	HR	HS	HS2	HT	HE	HF	HG	HM	HP	HR	HS	HS2	HT
	Frnt	Rr	Ttl	Frnt	Rr																		
¹⁾ 4900 & ZQ8 P235/50R17	2056	1684	3740	2533	2447	—	9.4	63.6	13.1	—	23.6	16.7	17.3	25.3	—	8.0	61.7	11.5	—	21.3	14.9	15.3	22.8
²⁾ 4900 & ZQ8 P235/50R18	2056	1684	3740	2533	2447	—	10.1	64.3	13.8	—	24.3	17.4	17.9	26.0	—	8.7	62.4	12.2	—	22.0	15.6	16.0	23.4
²⁾ 5000 & Z85 P225/75R15	1974	1661	3635	2533	2896	—	11.5	66.0	15.4	—	26.0	19.0	19.6	27.8	—	9.8	63.8	13.4	—	22.7	16.9	17.2	23.7
²⁾ 5300 & Z71 P265/75R15	2010	1759	3769	2753	2896	—	14.9	69.1	18.6	—	29.1	22.2	22.7	30.8	—	12.7	66.6	16.3	—	25.7	19.8	20.0	26.8

T 15643		126.0" Wheelbase				Frame Heights at Minimum Curb Weight										Frame Heights and Angular Dimensions are shown at Maximum GAWR Front/Rear							
GVW/Tire	Minimum Curb Weight			GAWR		HE	HF	HG	HM	HP	HR	HS	HS2	HT	HE	HF	HG	HM	HP	HR	HS	HS2	HT
	Frnt	Rr	Ttl	Frnt	Rr																		
¹⁾ 5300 & Z85 P235/75R15	2097	1844	3941	2753	2896	—	14.2	68.1	17.8	—	28.0	21.3	21.7	29.6	—	12.3	65.9	15.7	—	24.9	19.2	19.3	25.9
¹⁾ 5300 & Z71 P265/75R15	2172	1882	4054	2753	2896	—	14.9	68.8	18.5	—	28.7	22.0	22.4	30.3	—	13.3	66.7	16.6	—	25.7	20.0	20.1	26.7

NOTE: Front coil springs, torsion bars and adjusters are computer selected based on model options and calculated sprung curb weight. Actual heights may vary due to production tolerances.

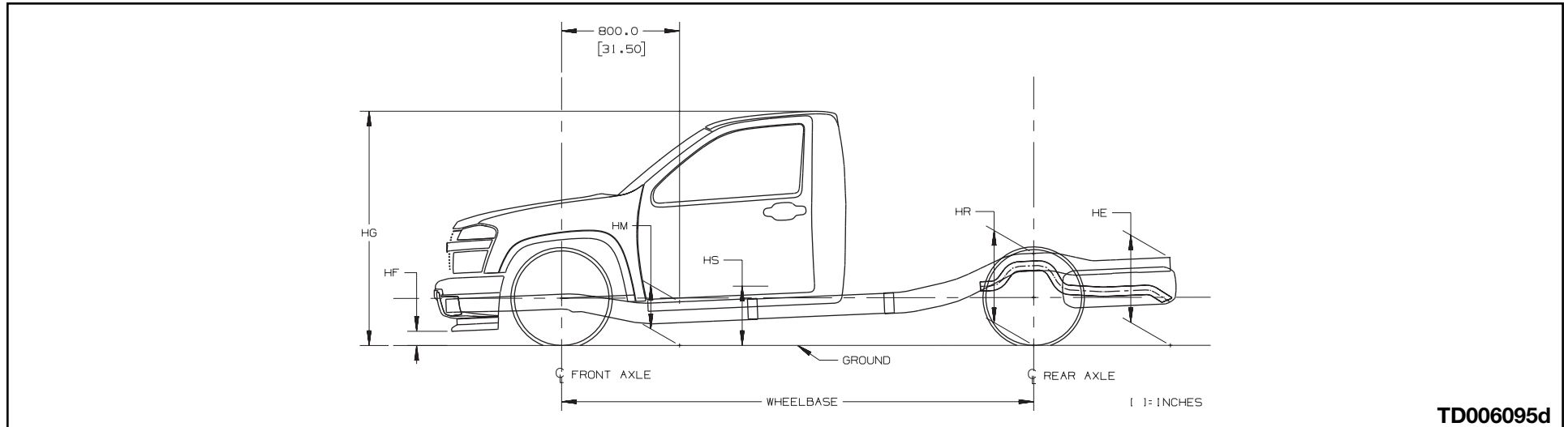
1) Base GVWR — contains minimum equipment required

2) Optional GVWR — contains minimum equipment required

(—) = not applicable for this model

VEHICLE AND FRAME HEIGHT CHARTS

S/T 15603 Midsize Chassis Cab



TD006095d

Heights (To Ground)

- HFBottom of Front Air Deflector or Bumper
- HGRoof Height
- HMNormal Top of Frame
- HPTop of Tailgate (Down)
- HRTop of Frame at Centerline of Rear Axle
- HSStep H-Point-Front
- HS2Step H-Point-Second
- HTRear Cargo Load Height

NOTE: All weights are in pounds, dimensions are in inches and angles are in degrees.

VEHICLE AND FRAME HEIGHT CHARTS

S 15603		126.0" Wheelbase				Frame Heights at Minimum Curb Weight								Frame Heights and Angular Dimensions are shown at Maximum GAWR Front/Rear									
GVW/Tire	Minimum Curb Weight			GAWR		HE	HF	HG	HM	HP	HR	HS	HS2	HT	HE	HF	HG	HM	HP	HR	HS	HS2	HT
	Frnt	Rr	Ttl	Frnt	Rr																		
¹⁾ 5300 & Z71 P265/75R15	1967	1171	3138	2753	2896	—	14.7	68.8	18.8	—	29.5	22.6	—	—	—	12.6	65.9	16.2	—	25.8	19.7	—	—
¹⁾ 5300 & Z71 P235/75R15	1967	1171	3138	2753	2896	—	14.1	68.2	18.2	—	28.9	21.9	—	—	—	11.9	65.3	15.5	—	25.2	19.0	—	—

NOTE: Front coil springs, torsion bars and adjusters are computer selected based on model options and calculated sprung curb weight. Actual heights may vary due to production tolerances.

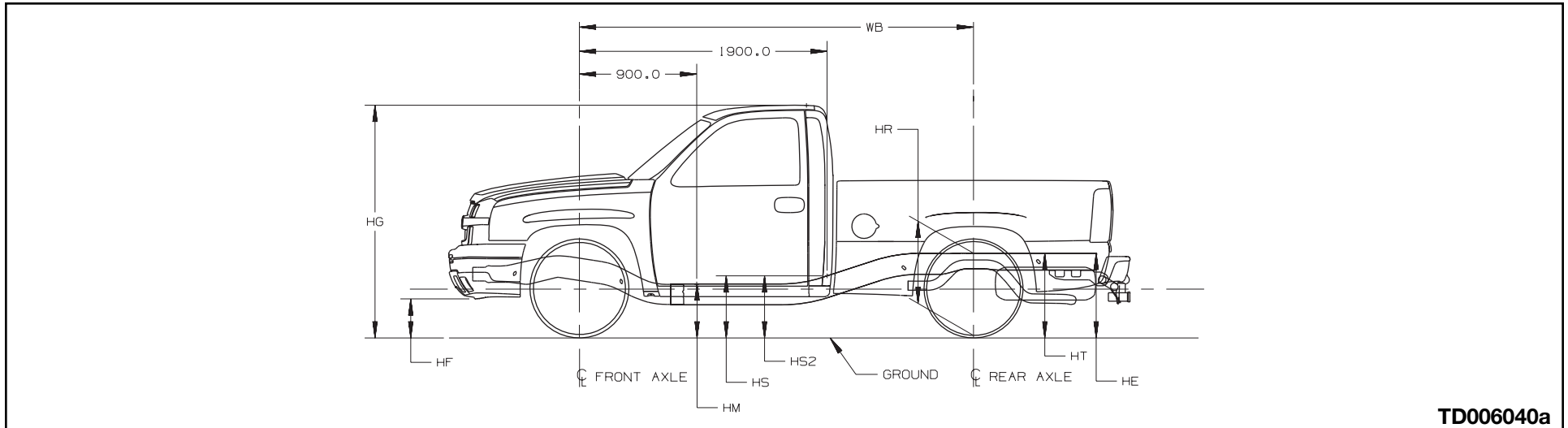
1) Base GVWR — contains minimum equipment required

2) Optional GVWR — contains minimum equipment required

(—) = not applicable for this model

VEHICLE AND FRAME HEIGHT CHARTS

C/K Fullsize Pickups



TD006040a

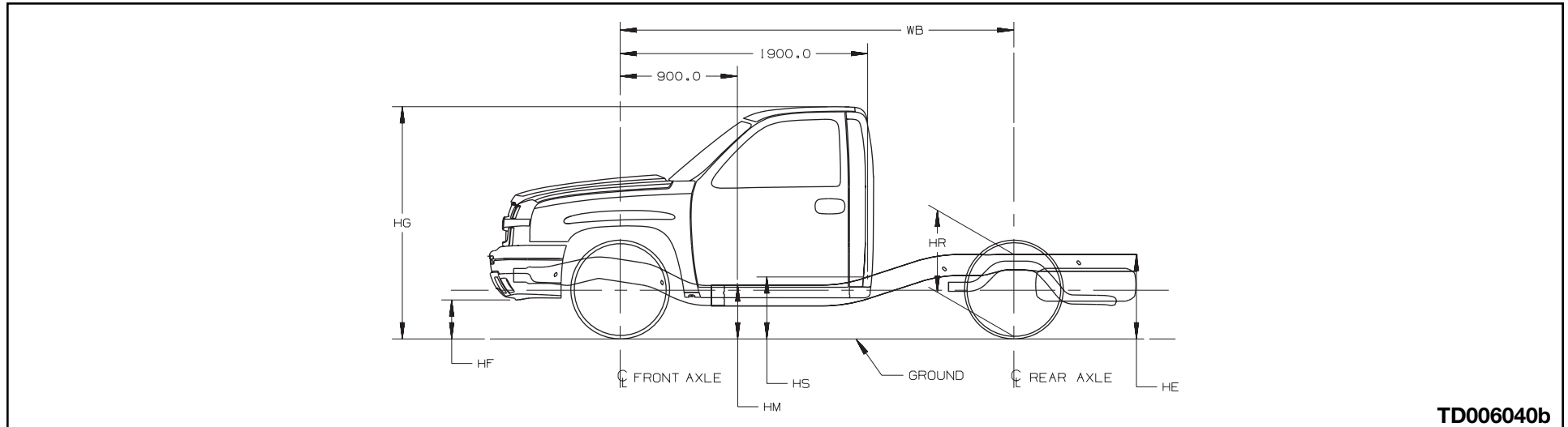
Heights (To Ground)

- HETop of Frame at End
- HFBottom of Front Air Deflector or Bumper
- HGRoof height to ground
- HMNormal Top of Frame
- HPTop of Tailgate
- HRTop of Frame at Centerline of Rear Axle
- HSStep H-Point-Front
- HS2Step H-Point-Second
- HTRear Cargo Load Height

NOTE: All weights are in pounds, dimensions are in inches and angles are in degrees.

VEHICLE AND FRAME HEIGHT CHARTS

C/K Fullsize Chassis-Cabs



TD006040b

Heights (To Ground)

- HETop of Frame at End
- HFBottom of Front Air Deflector or Bumper
- HGRoof height to ground
- HMNormal Top of Frame
- HPTop of Tailgate
- HRTop of Frame at Centerline of Rear Axle
- HSStep H-Point-Front
- HS2Step H-Point-Second
- HTRear Cargo Load Height

NOTE: All weights are in pounds, dimensions are in inches and angles are in degrees.

VEHICLE AND FRAME HEIGHT CHARTS

C 15703		119.0" Wheelbase				Frame Heights at Minimum Curb Weight								Frame Heights and Angular Dimensions are shown at Maximum GAWR Front/Rear									
GVW/Tire	Minimum Curb Weight			GAWR		HE	HF	HG	HM	HP	HR	HS	HS2	HT	HE	HF	HG	HM	HP	HR	HS	HS2	HT
	Frnt	Rr	Ttl	Frnt	Rr																		
¹⁾ 6100 P245/70R17	2457	1704	4161	3150	3686	30.3	10.3	72.0	17.1	—	29.1	20.4	—	33.0	23.9	9.0	69.2	14.8	—	24.2	18.1	—	26.3

C 15903		133.0" Wheelbase				Frame Heights at Minimum Curb Weight								Frame Heights and Angular Dimensions are shown at Maximum GAWR Front/Rear									
GVW/Tire	Minimum Curb Weight			GAWR		HE	HF	HG	HM	HP	HR	HS	HS2	HT	HE	HF	HG	HM	HP	HR	HS	HS2	HT
	Frnt	Rr	Ttl	Frnt	Rr																		
¹⁾ 6400 P245/70R17	2536	1779	4315	3150	3686	30.3	10.4	71.8	17.0	—	29.1	20.3	—	33.0	24.4	9.4	69.1	14.9	—	24.5	18.2	—	26.8

C 15753		143.5" Wheelbase				Frame Heights at Minimum Curb Weight								Frame Heights and Angular Dimensions are shown at Maximum GAWR Front/Rear									
GVW/Tire	Minimum Curb Weight			GAWR		HE	HF	HG	HM	HP	HR	HS	HS2	HT	HE	HF	HG	HM	HP	HR	HS	HS2	HT
	Frnt	Rr	Ttl	Frnt	Rr																		
¹⁾ 6200 P235/75R16	2689	1859	4548	3600	3686	29.3	10.1	71.5	16.4	—	28.3	19.7	20.7	31.9	23.6	8.0	69.4	14.3	—	24.0	17.6	18.5	26.1
²⁾ 6200 P245/70R17	2689	1859	4548	3600	3686	29.6	10.4	71.9	16.8	—	28.7	20.1	21.1	32.3	24.0	8.4	69.7	14.6	—	24.3	18.0	18.9	30.0

NOTE: Front coil springs, torsion bars and adjusters are computer selected based on model options and calculated sprung curb weight. Actual heights may vary due to production tolerances.

1) Base GVWR — contains minimum equipment required

2) Optional GVWR — contains minimum equipment required

(—) = not applicable for this model

VEHICLE AND FRAME HEIGHT CHARTS

C 15953		157.5" Wheelbase				Frame Heights at Minimum Curb Weight								Frame Heights and Angular Dimensions are shown at Maximum GAWR Front/Rear									
GVW/Tire	Minimum Curb Weight			GAWR		HE	HF	HG	HM	HP	HR	HS	HS2	HT	HE	HF	HG	HM	HP	HR	HS	HS2	HT
	Frnt	Rr	Ttl	Frnt	Rr																		
¹⁾ 6400 P245/70R17	2886	1915	4801	3600	3686	29.5	10.6	71.6	16.7	—	28.6	20.0	20.8	32.0	24.0	9.2	69.5	14.9	—	24.3	18.2	18.8	26.5

C 15543		143.5" Wheelbase				Frame Heights at Minimum Curb Weight								Frame Heights and Angular Dimensions are shown at Maximum GAWR Front/Rear									
GVW/Tire	Minimum Curb Weight			GAWR		HE	HF	HG	HM	HP	HR	HS	HS2	HT	HE	HF	HG	HM	HP	HR	HS	HS2	HT
	Frnt	Rr	Ttl	Frnt	Rr																		
¹⁾ 6800 P245/70R17	2881	2102	4984	3650	4000	27.3	10.9	71.3	16.6	—	29.1	19.7	20.3	30.1	22.5	9.2	68.2	14.6	—	23.4	17.8	18.2	25.3

C 15743		153.0" Wheelbase				Frame Heights at Minimum Curb Weight								Frame Heights and Angular Dimensions are shown at Maximum GAWR Front/Rear									
GVW/Tire	Minimum Curb Weight			GAWR		HE	HF	HG	HM	HP	HR	HS	HS2	HT	HE	HF	HG	HM	HP	HR	HS	HS2	HT
	Frnt	Rr	Ttl	Frnt	Rr																		
¹⁾ 8600 LT245/75R16	3111	2330	5442	4410	6000	34.0	13.3	77.2	20.2	—	33.2	24.9	25.6	36.5	28.5	11.3	75.0	18.0	—	28.9	22.7	23.2	31.0

NOTE: Front coil springs, torsion bars and adjusters are computer selected based on model options and calculated sprung curb weight. Actual heights may vary due to production tolerances.

1) Base GVWR — contains minimum equipment required

2) Optional GVWR — contains minimum equipment required

(—) = not applicable for this model

VEHICLE AND FRAME HEIGHT CHARTS

K 15703		119.0" Wheelbase				Frame Heights at Minimum Curb Weight								Frame Heights and Angular Dimensions are shown at Maximum GAWR Front/Rear									
GVW/Tire	Minimum Curb Weight			GAWR		HE	HF	HG	HM	HP	HR	HS	HS2	HT	HE	HF	HG	HM	HP	HR	HS	HS2	HT
	Frnt	Rr	Ttl	Frnt	Rr																		
¹⁾ 6400 P265/70R17	2678	1753	4431	3925	3750	32.7	12.7	74.4	19.5	—	31.5	22.8	—	35.3	26.3	9.5	71.9	16.8	—	26.7	20.1	—	28.8

K 15903		133.0" Wheelbase				Frame Heights at Minimum Curb Weight								Frame Heights and Angular Dimensions are shown at Maximum GAWR Front/Rear									
GVW/Tire	Minimum Curb Weight			GAWR		HE	HF	HG	HM	HP	HR	HS	HS2	HT	HE	HF	HG	HM	HP	HR	HS	HS2	HT
	Frnt	Rr	Ttl	Frnt	Rr																		
¹⁾ 6400 P265/70R17	2764	1818	4582	3925	3750	32.5	12.8	74.1	19.3	—	31.3	22.6	—	35.1	26.3	9.8	71.7	16.7	—	26.7	20.1	—	28.7

NOTE: Front coil springs, torsion bars and adjusters are computer selected based on model options and calculated sprung curb weight. Actual heights may vary due to production tolerances.

1) Base GVWR — contains minimum equipment required

2) Optional GVWR — contains minimum equipment required

(—) = not applicable for this model

VEHICLE AND FRAME HEIGHT CHARTS

K 15753		143.5" Wheelbase				Frame Heights at Minimum Curb Weight								Frame Heights and Angular Dimensions are shown at Maximum GAWR Front/Rear									
GVW/Tire	Minimum Curb Weight			GAWR		HE	HF	HG	HM	HP	HR	HS	HS2	HT	HE	HF	HG	HM	HP	HR	HS	HS2	HT
	Frnt	Rr	Ttl	Frnt	Rr																		
¹⁾ 6400 P245/75R16	3054	1924	4979	3650	3600	31.1	12.8	73.5	18.4	—	30.2	21.7	22.7	33.7	25.8	11.0	71.7	16.7	—	26.2	20.1	20.7	28.3
²⁾ 6400 P265/70R17	3054	1924	4979	3650	3600	31.7	12.8	74.1	19.1	—	30.8	22.4	23.3	34.3	26.5	11.6	72.3	17.4	—	26.8	20.7	21.3	28.9
²⁾ 6400 P275/55R20	3159	2076	5236	3650	3600	31.5	13.2	74.1	19.2	—	30.7	22.5	23.3	34.0	26.8	12.4	72.5	18.0	—	27.1	21.3	21.8	29.2
¹⁾ 6900 P245/75R16	3023	2302	5326	3925	4000	30.8	12.3	73.3	18.4	—	30.0	21.7	22.5	33.4	25.6	10.1	71.4	16.2	—	26.0	19.6	20.4	28.1
²⁾ 6900 & NYS LT245/75R16	3023	2302	5326	3925	4000	31.0	12.7	73.7	18.7	—	30.3	22.1	22.9	33.6	26.2	10.6	71.8	16.7	—	26.4	20.0	20.8	28.6
²⁾ 6900 & NYS P265/75R16	3023	2302	5326	3925	4000	31.4	12.9	74.0	19.0	—	30.6	22.3	23.2	34.0	26.3	10.7	72.0	16.9	—	26.6	20.2	21.1	28.7
²⁾ 6900 P265/70R17	3023	2302	5326	3925	4000	30.6	12.7	73.9	18.9	—	30.6	22.2	23.1	34.0	26.3	10.5	72.0	16.7	—	26.6	20.0	21.0	28.8

NOTE: Front coil springs, torsion bars and adjusters are computer selected based on model options and calculated sprung curb weight. Actual heights may vary due to production tolerances.

1) Base GVWR — contains minimum equipment required

2) Optional GVWR — contains minimum equipment required

(—) = not applicable for this model

VEHICLE AND FRAME HEIGHT CHARTS

K 15953		157.5" Wheelbase				Frame Heights at Minimum Curb Weight								Frame Heights and Angular Dimensions are shown at Maximum GAWR Front/Rear									
GVW/Tire	Minimum Curb Weight			GAWR		HE	HF	HG	HM	HP	HR	HS	HS2	HT	HE	HF	HG	HM	HP	HR	HS	HS2	HT
	Frnt	Rr	Ttl	Frnt	Rr																		
¹⁾ 6400 P265/70R17	3118	1992	5111	3925	3750	32.2	12.8	74.2	19.1	—	31.2	22.4	23.3	34.8	26.5	11.1	72.6	17.5	—	26.9	20.8	21.8	28.9

K 15543		153.0" Wheelbase				Frame Heights at Minimum Curb Weight								Frame Heights and Angular Dimensions are shown at Maximum GAWR Front/Rear									
GVW/Tire	Minimum Curb Weight			GAWR		HE	HF	HG	HM	HP	HR	HS	HS2	HT	HE	HF	HG	HM	HP	HR	HS	HS2	HT
	Frnt	Rr	Ttl	Frnt	Rr																		
¹⁾ 7000 P265/70R17	3137	2170	5308	3925	4000	29.8	13.2	73.8	19.0	—	29.7	22.1	22.7	32.7	25.0	11.7	71.8	17.2	—	25.9	20.4	20.7	27.8
²⁾ 7000 P265/70R17	3137	2170	5308	3925	4000	29.8	13.1	73.7	18.9	—	29.6	22.0	22.6	32.6	24.8	11.6	71.7	17.1	—	25.8	20.3	20.5	27.7
²⁾ 7000 P275/55R20	3137	2170	5308	3925	4000	30.1	13.5	74.1	19.3	—	30.0	22.4	23.0	33.0	25.3	12.1	72.1	17.5	—	26.2	20.7	21.0	28.1

NOTE: Front coil springs, torsion bars and adjusters are computer selected based on model options and calculated sprung curb weight. Actual heights may vary due to production tolerances.

1) Base GVWR — contains minimum equipment required

2) Optional GVWR — contains minimum equipment required

(—) = not applicable for this model

VEHICLE AND FRAME HEIGHT CHARTS

C 25903		133.0" Wheelbase				Frame Heights at Minimum Curb Weight								Frame Heights and Angular Dimensions are shown at Maximum GAWR Front/Rear									
GVW/Tire	Minimum Curb Weight			GAWR		HE	HF	HG	HM	HP	HR	HS	HS2	HT	HE	HF	HG	HM	HP	HR	HS	HS2	HT
	Fr	Rr	Ttl	Fr	Rr																		
¹⁾ 9200 AF LT245/75R16	3395	1942	5338	4410	6084	35.6	12.9	74.7	20.5	—	34.2	23.4	—	36.1	28.6	11.8	72.2	18.3	—	29.0	20.9	—	29.0
¹⁾ 8500 LT245/75R16	2990	2610	5601	4100	6000	33.4	13.3	73.9	20.2	—	32.6	22.9	—	33.9	28.4	11.7	72.3	18.3	—	28.9	20.9	—	28.8
²⁾ 8500 & ZW9 LT245/75R16	3011	2329	5341	4100	6000	34.2	13.2	74.2	20.3	—	33.1	23.1	—	—	28.4	11.7	72.3	18.3	—	28.9	21.0	—	—
¹⁾ 9200 LT245/75R16	2866	2177	5044	4410	6084	34.6	13.2	76.4	20.4	—	33.4	25.2	—	37.1	28.6	11.0	73.8	17.7	—	28.9	22.4	—	31.1
²⁾ 9200 & ZW9 LT245/75R16	2870	1813	4683	4410	6084	35.5	13.0	76.8	20.6	—	34.1	25.4	—	—	28.6	11.0	73.8	17.7	—	28.9	22.4	—	—

C 25753		143.5" Wheelbase				Frame Heights at Minimum Curb Weight								Frame Heights and Angular Dimensions are shown at Maximum GAWR Front/Rear									
GVW/Tire	Minimum Curb Weight			GAWR		HE	HF	HG	HM	HP	HR	HS	HS2	HT	HE	HF	HG	HM	HP	HR	HS	HS2	HT
	Fr	Rr	Ttl	Fr	Rr																		
¹⁾ 9200 LT245/75R16	3033	2187	5221	4410	6084	34.5	13.2	76.8	20.4	—	33.6	25.1	25.7	37.1	28.7	11.3	74.0	17.9	—	28.9	22.5	22.9	31.2

NOTE: Front coil springs, torsion bars and adjusters are computer selected based on model options and calculated sprung curb weight. Actual heights may vary due to production tolerances.

1) Base GVWR — contains minimum equipment required

2) Optional GVWR — contains minimum equipment required

(—) = not applicable for this model

VEHICLE AND FRAME HEIGHT CHARTS

C 25953		157.5" Wheelbase				Frame Heights at Minimum Curb Weight								Frame Heights and Angular Dimensions are shown at Maximum GAWR Front/Rear									
GVW/Tire	Minimum Curb Weight			GAWR		HE	HF	HG	HM	HP	HR	HS	HS2	HT	HE	HF	HG	HM	HP	HR	HS	HS2	HT
	Frnt	Rr	Ttl	Frnt	Rr																		
²⁾ 8500 LT245/75R16	3226	2806	6033	4500	6084	33.0	13.4	75.9	20.0	—	32.4	24.6	25.0	35.5	28.3	11.3	74.9	18.1	—	28.9	22.7	23.2	30.8
¹⁾ 9200 LT245/75R16	3119	2247	5367	4500	6084	33.5	13.2	76.5	20.2	—	33.5	24.9	25.5	36.9	28.7	11.2	74.1	17.8	—	28.9	22.4	22.8	31.1
²⁾ 9200 AF LT245/75R16	3687	2336	6024	4500	6084	34.4	13.0	76.4	20.1	—	33.4	24.8	25.4	36.9	28.5	12.1	74.6	18.4	—	29.0	23.0	23.3	31.0

C 25743		143.5" Wheelbase				Frame Heights at Minimum Curb Weight								Frame Heights and Angular Dimensions are shown at Maximum GAWR Front/Rear									
GVW/Tire	Minimum Curb Weight			GAWR		HE	HF	HG	HM	HP	HR	HS	HS2	HT	HE	HF	HG	HM	HP	HR	HS	HS2	HT
	Frnt	Rr	Ttl	Frnt	Rr																		
¹⁾ 9200 LT245/75R16	3068	2304	5373	4410	6084	34.2	13.2	77.4	20.3	—	33.4	25.0	25.7	36.7	28.7	11.4	74.5	17.9	—	28.9	22.5	23.0	31.2

C 25943		157.5" Wheelbase				Frame Heights at Minimum Curb Weight								Frame Heights and Angular Dimensions are shown at Maximum GAWR Front/Rear									
GVW/Tire	Minimum Curb Weight			GAWR		HE	HF	HG	HM	HP	HR	HS	HS2	HT	HE	HF	HG	HM	HP	HR	HS	HS2	HT
	Frnt	Rr	Ttl	Frnt	Rr																		
¹⁾ 9200 LT245/75R16	3172	2368	5541	4670	6084	34.1	13.2	77.1	20.1	—	33.2	24.8	25.5	—	28.7	11.0	74.4	17.7	—	28.9	22.3	22.8	—
²⁾ 9200 & ZW9 LT245/75R16	3184	1999	5184	4670	6084	35.0	13.1	77.5	20.3	—	34.0	25.0	25.8	—	28.7	11.0	74.4	17.7	—	28.9	22.3	22.8	—

NOTE: Front coil springs, torsion bars and adjusters are computer selected based on model options and calculated sprung curb weight. Actual heights may vary due to production tolerances.

1) Base GVWR — contains minimum equipment required

2) Optional GVWR — contains minimum equipment required

(—) = not applicable for this model

VEHICLE AND FRAME HEIGHT CHARTS

K 25903		133.0" Wheelbase				Frame Heights at Minimum Curb Weight								Frame Heights and Angular Dimensions are shown at Maximum GAWR Front/Rear									
GVW/Tire	Minimum Curb Weight			GAWR		HE	HF	HG	HM	HP	HR	HS	HS2	HT	HE	HF	HG	HM	HP	HR	HS	HS2	HT
	Frnt	Rr	Ttl	Frnt	Rr																		
²⁾ 8500 AF LT245/75R16	3293	2704	5998	4500	6084	33.3	13.2	75.6	20.1	—	32.5	24.8	—	35.8	28.1	11.3	74.8	18.2	—	28.8	22.9	—	30.5
¹⁾ 9200 & ZW9 LT245/75R16	3133	1802	4936	4500	6084	35.6	12.9	76.3	20.6	—	34.2	25.4	—	—	28.5	11.2	74.0	17.9	—	28.8	22.6	—	—
²⁾ 9200 & E63 LT245/75R16	3184	2163	5348	4500	6084	34.7	13.0	76.0	20.4	—	33.5	25.1	—	37.2	28.5	11.3	74.1	18.0	—	28.8	22.6	—	31.0
²⁾ 9200 & VYU LT245/75R16	3192	2163	5356	4800	6084	34.7	13.1	76.0	20.4	—	33.5	25.2	—	37.2	28.5	10.8	74.1	17.7	—	28.8	22.4	—	30.9

K 25753		143.5" Wheelbase				Frame Heights at Minimum Curb Weight								Frame Heights and Angular Dimensions are shown at Maximum GAWR Front/Rear									
GVW/Tire	Minimum Curb Weight			GAWR		HE	HF	HG	HM	HP	HR	HS	HS2	HT	HE	HF	HG	HM	HP	HR	HS	HS2	HT
	Frnt	Rr	Ttl	Frnt	Rr																		
¹⁾ 9200 LT245/75R16	3337	2249	5587	4800	6084	34.3	13.1	76.7	20.3	—	33.4	25.0	25.6	36.8	28.5	10.9	74.2	17.8	—	28.8	22.4	22.9	31.0
²⁾ 9200 & VYU LT245/75R16	3386	2353	5740	4800	6084	33.9	13.2	76.5	20.2	—	33.0	24.9	25.4	36.4	28.4	11.1	74.3	17.9	—	28.8	22.5	22.9	30.9

NOTE: Front coil springs, torsion bars and adjusters are computer selected based on model options and calculated sprung curb weight. Actual heights may vary due to production tolerances.

1) Base GVWR — contains minimum equipment required

2) Optional GVWR — contains minimum equipment required

(—) = not applicable for this model

VEHICLE AND FRAME HEIGHT CHARTS

K 25953		157.5" Wheelbase				Frame Heights at Minimum Curb Weight								Frame Heights and Angular Dimensions are shown at Maximum GAWR Front/Rear									
GVW/Tire	Minimum Curb Weight			GAWR		HE	HF	HG	HM	HP	HR	HS	HS2	HT	HE	HF	HG	HM	HP	HR	HS	HS2	HT
	Frnt	Rr	Ttl	Frnt	Rr																		
²⁾ 8500 AF LT245/75R16	3472	2811	6284	4500	6084	33.0	13.3	75.9	19.9	—	32.3	24.5	24.9	35.5	28.1	11.7	75.1	18.3	—	28.8	22.9	23.3	30.6
¹⁾ 9200 LT245/75R16	3374	2258	5633	4670	6084	34.3	13.1	76.5	20.2	—	33.4	24.9	25.4	36.8	28.5	11.3	74.3	17.9	—	28.9	22.5	22.9	31.0
²⁾ 9200 & VYU LT245/75R16	3383	2258	5642	4800	6084	34.3	13.2	76.5	20.2	—	33.4	24.9	25.4	36.8	28.5	11.2	74.3	17.8	—	28.9	22.5	22.9	30.9

K 25743		153.0" Wheelbase				Frame Heights at Minimum Curb Weight								Frame Heights and Angular Dimensions are shown at Maximum GAWR Front/Rear									
GVW/Tire	Minimum Curb Weight			GAWR		HE	HF	HG	HM	HP	HR	HS	HS2	HT	HE	HF	HG	HM	HP	HR	HS	HS2	HT
	Frnt	Rr	Ttl	Frnt	Rr																		
¹⁾ 8600 LT245/75R16	3414	2404	5819	4410	6000	33.8	13.3	77.1	20.1	—	33.0	24.8	25.5	36.3	28.3	11.7	75.1	18.3	—	28.9	22.9	23.4	30.8
¹⁾ 9200 LT245/75R16	3340	2446	5787	4670	6084	33.9	13.2	77.1	20.1	—	33.1	24.8	25.5	36.4	28.6	11.2	74.7	17.9	—	28.9	23.8	23.0	31.0
²⁾ 9200 & VYU LT245/75R16	3419	2532	5952	4800	6084	33.6	13.2	77.1	20.1	—	32.9	24.8	25.4	36.1	28.5	11.2	74.8	17.9	—	28.9	22.5	23.1	31.0

NOTE: Front coil springs, torsion bars and adjusters are computer selected based on model options and calculated sprung curb weight. Actual heights may vary due to production tolerances.

1) Base GVWR — contains minimum equipment required

2) Optional GVWR — contains minimum equipment required

(—) = not applicable for this model

VEHICLE AND FRAME HEIGHT CHARTS

K 25943		167.0" Wheelbase				Frame Heights at Minimum Curb Weight								Frame Heights and Angular Dimensions are shown at Maximum GAWR Front/Rear									
GVW/Tire	Minimum Curb Weight			GAWR		HE	HF	HG	HM	HP	HR	HS	HS2	HT	HE	HF	HG	HM	HP	HR	HS	HS2	HT
	Frnt	Rr	Ttl	Frnt	Rr																		
¹⁾ 9200 LT245/75R16	3451	2577	6029	4800	6084	33.6	13.3	76.8	20.0	—	32.8	24.7	25.3	36.1	28.5	11.3	74.9	17.9	—	28.9	22.5	23.0	31.0
²⁾ 9200 & ZW9 LT245/75R16	3463	2208	5672	4800	6084	34.5	13.2	77.2	20.2	—	33.5	24.9	25.6	37.0	28.5	11.3	74.9	17.9	—	28.9	22.5	23.0	31.0

C 35953		157.5" Wheelbase				Frame Heights at Minimum Curb Weight								Frame Heights and Angular Dimensions are shown at Maximum GAWR Front/Rear									
GVW/Tire	Minimum Curb Weight			GAWR		HE	HF	HG	HM	HP	HR	HS	HS2	HT	HE	HF	HG	HM	HP	HR	HS	HS2	HT
	Frnt	Rr	Ttl	Frnt	Rr																		
¹⁾ 11400 LT215/85R16	3156	2767	5924	4670	8550	35.7	13.1	76.8	20.3	—	34.0	25.1	25.7	37.6	28.6	11.1	74.4	17.6	—	28.9	22.2	22.6	31.0

C 35943		167.0" Wheelbase				Frame Heights at Minimum Curb Weight								Frame Heights and Angular Dimensions are shown at Maximum GAWR Front/Rear									
GVW/Tire	Minimum Curb Weight			GAWR		HE	HF	HG	HM	HP	HR	HS	HS2	HT	HE	HF	HG	HM	HP	HR	HS	HS2	HT
	Frnt	Rr	Ttl	Frnt	Rr																		
¹⁾ 11400 LT215/85R16	3244	2760	6005	4670	8550	35.0	13.1	77.5	20.3	—	34.0	25.0	25.8	37.5	28.5	11.3	75.0	17.7	—	28.9	22.3	22.7	31.0
²⁾ 11400 & ZW9 LT215/85R16	3260	2347	5608	4670	8550	35.9	13.0	77.9	20.5	—	34.7	25.3	26.2	—	28.5	11.4	75.0	17.7	—	28.9	22.3	22.7	—

NOTE: Front coil springs, torsion bars and adjusters are computer selected based on model options and calculated sprung curb weight. Actual heights may vary due to production tolerances.

1) Base GVWR — contains minimum equipment required

2) Optional GVWR — contains minimum equipment required

(—) = not applicable for this model

VEHICLE AND FRAME HEIGHT CHARTS

K 35903		133.0" Wheelbase				Frame Heights at Minimum Curb Weight								Frame Heights and Angular Dimensions are shown at Maximum GAWR Front/Rear									
GVW/Tire	Minimum Curb Weight			GAWR		HE	HF	HG	HM	HP	HR	HS	HS2	HT	HE	HF	HG	HM	HP	HR	HS	HS2	HT
	Frnt	Rr	Ttl	Frnt	Rr																		
¹⁾ 9900 & VYU LT265/75R16	3141	2014	5156	4800	6500	37.2	13.4	77.3	21.4	—	35.5	26.3	—	39.7	30.1	11.3	74.7	18.3	—	30.1	23.0	—	32.6
¹⁾ 9900 & VYU LT265/75R16	3139	2332	5472	4800	6500	36.4	13.5	77.0	21.2	—	34.9	26.1	—	—	30.1	11.3	74.7	18.3	—	30.1	23.0	—	—
¹⁾ 11400 LT215/85R18	3137	2565	5703	4500	8550	35.7	13.0	76.4	20.7	—	34.3	25.5	—	38.2	28.5	11.4	74.3	17.9	—	28.9	22.5	—	30.9
²⁾ 11400 & ZW9 LT215/85R16	3143	2238	5382	4500	8550	36.5	12.8	76.7	20.8	—	34.9	25.7	—	—	28.4	11.4	74.3	17.9	—	28.9	22.5	—	—
²⁾ 11400 & VYU LT215/85R16	3146	2565	5712	4800	8550	35.7	12.9	76.4	20.6	—	34.3	25.5	—	38.2	28.5	10.8	74.3	17.6	—	28.9	22.3	—	30.9
²⁾ 11400 & VYU LT215/85R16	3151	2238	5390	4800	8550	36.5	12.8	76.7	20.8	—	34.9	25.7	—	—	28.4	10.9	74.3	17.6	—	28.9	22.3	—	—

K 35953		157.5" Wheelbase				Frame Heights at Minimum Curb Weight								Frame Heights and Angular Dimensions are shown at Maximum GAWR Front/Rear									
GVW/Tire	Minimum Curb Weight			GAWR		HE	HF	HG	HM	HP	HR	HS	HS2	HT	HE	HF	HG	HM	HP	HR	HS	HS2	HT
	Frnt	Rr	Ttl	Frnt	Rr																		
¹⁾ 9900 & SRW LT265/75R16	3372	2463	5836	4800	6500	35.2	13.8	77.2	20.9	—	34.2	25.6	26.1	37.7	29.1	11.8	74.6	18.3	—	29.4	23.0	23.3	31.6
²⁾ 11400 LT215/85R16	3388	2712	6101	4800	8550	35.0	13.1	76.8	20.3	—	33.9	25.1	25.7	37.5	27.5	11.4	74.4	17.6	—	28.2	22.2	22.4	30.0

NOTE: Front coil springs, torsion bars and adjusters are computer selected based on model options and calculated sprung curb weight. Actual heights may vary due to production tolerances.

1) Base GVWR — contains minimum equipment required

2) Optional GVWR — contains minimum equipment required

(—) = not applicable for this model

VEHICLE AND FRAME HEIGHT CHARTS

K 35943		167.0" Wheelbase				Frame Heights at Minimum Curb Weight								Frame Heights and Angular Dimensions are shown at Maximum GAWR Front/Rear									
GVW/Tire	Minimum Curb Weight			GAWR		HE	HF	HG	HM	HP	HR	HS	HS2	HT	HE	HF	HG	HM	HP	HR	HS	HS2	HT
	Frnt	Rr	Ttl	Frnt	Rr																		
¹⁾ 9900 LT265/75R16	3478	2788	6267	4800	6500	35.3	13.8	77.9	20.8	—	34.3	25.5	26.3	37.8	30.0	12.0	75.7	18.5	—	30.1	23.2	23.7	32.5
²⁾ 9900 & ZW9 LT265/75R16	3492	2373	5866	4800	6500	36.3	13.6	78.4	21.0	—	35.1	25.7	26.7	—	30.0	12.0	75.7	18.5	—	30.1	23.2	23.7	—
¹⁾ 11400 LT215/85R16	3499	2888	6388	4800	8550	34.7	13.2	77.4	20.2	—	33.7	25.0	25.7	37.2	28.4	11.5	75.1	17.8	—	28.9	22.4	22.8	30.9
²⁾ 11400 & ZW9 LT215/85R16	3513	2472	5986	4800	8550	35.7	13.0	77.8	20.4	—	34.5	25.2	26.1	—	28.4	11.5	75.2	17.9	—	28.9	22.5	22.8	—

C 36003		137.0" Wheelbase				Frame Heights at Minimum Curb Weight								Frame Heights and Angular Dimensions are shown at Maximum GAWR Front/Rear									
GVW/Tire	Minimum Curb Weight			GAWR		HE	HF	HG	HM	HP	HR	HS	HS2	HT	HE	HF	HG	HM	HP	HR	HS	HS2	HT
	Frnt	Rr	Ttl	Frnt	Rr																		
¹⁾ 11400 LT215/85R16	2990	2275	5266	4500	8550	33.5	13.0	76.2	20.6	—	32.0	25.3	—	—	26.8	11.0	74.4	17.8	—	27.1	22.4	—	—

C 36053		161.5" Wheelbase				Frame Heights at Minimum Curb Weight								Frame Heights and Angular Dimensions are shown at Maximum GAWR Front/Rear									
GVW/Tire	Minimum Curb Weight			GAWR		HE	HF	HG	HM	HP	HR	HS	HS2	HT	HE	HF	HG	HM	HP	HR	HS	HS2	HT
	Frnt	Rr	Ttl	Frnt	Rr																		
¹⁾ 11400 LT215/85R16	3232	2497	5730	4670	8550	33.0	13.1	76.7	20.4	—	31.7	25.0	25.6	—	26.8	11.2	74.6	17.8	—	27.1	22.4	22.8	—

NOTE: Front coil springs, torsion bars and adjusters are computer selected based on model options and calculated sprung curb weight. Actual heights may vary due to production tolerances.

1) Base GVWR — contains minimum equipment required

2) Optional GVWR — contains minimum equipment required

(—) = not applicable for this model

VEHICLE AND FRAME HEIGHT CHARTS

C 36403		161.5" Wheelbase				Frame Heights at Minimum Curb Weight									Frame Heights and Angular Dimensions are shown at Maximum GAWR Front/Rear								
GVW/Tire	Minimum Curb Weight			GAWR		HE	HF	HG	HM	HP	HR	HS	HS2	HT	HE	HF	HG	HM	HP	HR	HS	HS2	HT
	Frnt	Rr	Ttl	Frnt	Rr																		
¹⁾ 11400 LT215/85R16	3120	2229	5350	4670	8550	33.4	13.1	76.0	20.5	—	32.0	25.1	—	—	26.8	11.0	74.5	17.7	—	27.1	22.3	—	—

K 36003		137.0" Wheelbase				Frame Heights at Minimum Curb Weight									Frame Heights and Angular Dimensions are shown at Maximum GAWR Front/Rear								
GVW/Tire	Minimum Curb Weight			GAWR		HE	HF	HG	HM	HP	HR	HS	HS2	HT	HE	HF	HG	HM	HP	HR	HS	HS2	HT
	Frnt	Rr	Ttl	Frnt	Rr																		
¹⁾ 12000 LT215/85R16	3249	2300	5550	4670	8600	33.2	13.0	76.1	20.5	—	31.7	25.2	—	—	25.8	11.3	72.5	17.7	—	26.3	22.2	—	—
²⁾ 12000 & VYU LT215/85R16	3249	2300	5550	4800	8600	33.3	13.0	76.2	20.6	—	31.8	25.3	—	—	25.9	11.1	73.8	17.6	—	26.4	22.2	—	—

K 36053		161.5" Wheelbase				Frame Heights at Minimum Curb Weight									Frame Heights and Angular Dimensions are shown at Maximum GAWR Front/Rear								
GVW/Tire	Minimum Curb Weight			GAWR		HE	HF	HG	HM	HP	HR	HS	HS2	HT	HE	HF	HG	HM	HP	HR	HS	HS2	HT
	Frnt	Rr	Ttl	Frnt	Rr																		
¹⁾ 12000 LT215/85R16	3537	2510	6048	4800	8600	32.7	13.1	76.6	20.3	—	31.5	25.0	25.5	—	25.9	11.6	74.1	17.9	—	26.4	22.4	22.6	—

NOTE: Front coil springs, torsion bars and adjusters are computer selected based on model options and calculated sprung curb weight. Actual heights may vary due to production tolerances.

1) Base GVWR — contains minimum equipment required

2) Optional GVWR — contains minimum equipment required

(—) = not applicable for this model

VEHICLE AND FRAME HEIGHT CHARTS

K 36403		161.5" Wheelbase				Frame Heights at Minimum Curb Weight								Frame Heights and Angular Dimensions are shown at Maximum GAWR Front/Rear									
						HE	HF	HG	HM	HP	HR	HS	HS2	HT	HE	HF	HG	HM	HP	HR	HS	HS2	HT
GVW/Tire	Minimum Curb Weight			GAWR																			
	Frnt	Rr	Ttl	Frnt	Rr																		
¹⁾ 12000 LT215/85R16	3401	2273	5675	4800	8600	33.2	13.1	75.9	20.4	—	31.8	25.1	—	—	25.9	11.4	74.0	17.7	—	26.4	22.2	—	—

NOTE: Front coil springs, torsion bars and adjusters are computer selected based on model options and calculated sprung curb weight. Actual heights may vary due to production tolerances.

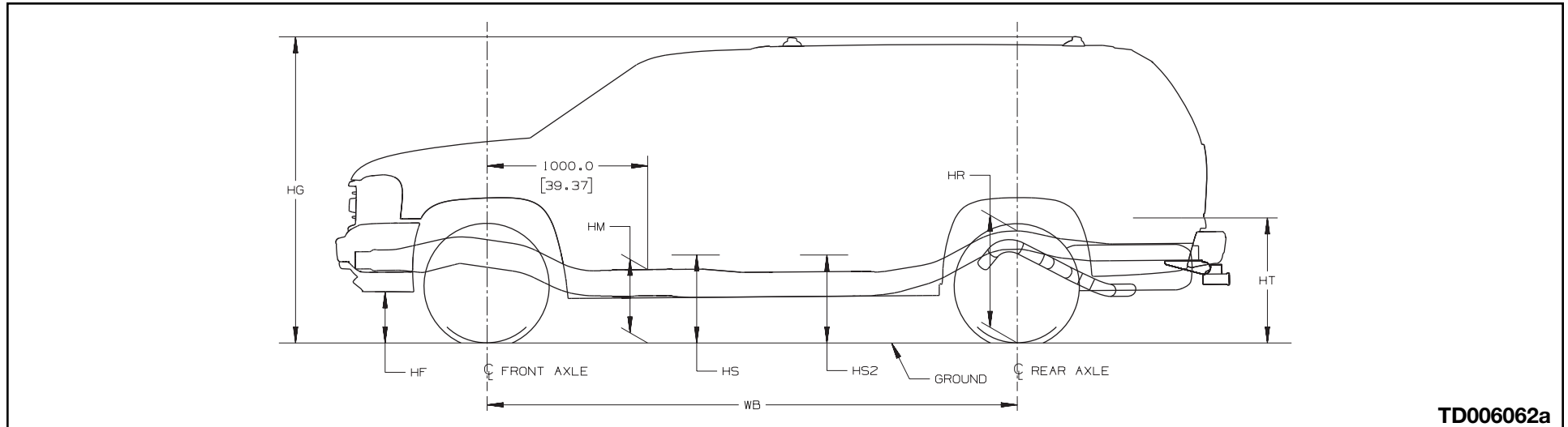
1) Base GVWR — contains minimum equipment required

2) Optional GVWR — contains minimum equipment required

(—) = not applicable for this model

VEHICLE AND FRAME HEIGHT CHARTS

C/K 15000/25000 Fullsize Utility



TD006062a

Heights (To Ground)

- HETop of Frame at End
- HFBottom of Front Air Deflector or Bumper
- HGRoof height to ground
- HMNormal Top of Frame
- HPTop of Tailgate
- HRTop of Frame at Centerline of Rear Axle
- HSStep H-Point-Front
- HS2Step H-Point-Second
- HTRear Cargo Load Height

NOTE: All weights are in pounds, dimensions are in inches and angles are in degrees.

VEHICLE AND FRAME HEIGHT CHARTS

C 15706		116.0" Wheelbase				Frame Heights at Minimum Curb Weight								Frame Heights and Angular Dimensions are shown at Maximum GAWR Front/Rear									
GVW/Tire	Minimum Curb Weight			GAWR		HE	HF	HG	HM	HP	HR	HS	HS2	HT	HE	HF	HG	HM	HP	HR	HS	HS2	HT
	Frnt	Rr	Ttl	Frnt	Rr																		
¹⁾ 6500 P265/70R17	2583	2382	4966	3200	3750	—	13.1	77.0	18.0	—	28.9	22.3	22.8	31.5	—	11.1	75.2	16.6	—	26.8	20.4	20.9	29.0
²⁾ 6500 P265/70R16	2583	2382	4966	3200	3750	—	12.6	76.6	18.0	—	28.4	21.8	22.3	31.0	—	10.6	74.7	16.2	—	26.4	19.9	20.5	28.5
²⁾ 6500 P245/75R16	2583	2382	4966	3200	3750	—	12.6	76.5	18.0	—	28.4	21.8	22.3	31.0	—	10.6	74.7	16.1	—	26.3	19.9	20.4	28.5
²⁾ 6500 P265/70R17	2583	2382	4966	3200	3750	—	13.0	77.0	18.4	—	28.8	22.2	22.7	31.4	—	11.0	75.1	16.5	—	26.8	20.3	20.9	28.9
¹⁾ 6800 P265/70R17	2580	2478	5059	3200	4000	—	13.2	77.1	18.3	—	28.6	22.2	22.6	31.2	—	11.1	75.5	16.6	—	26.8	20.4	20.9	29.0
²⁾ 6800 P265/70R16	2580	2478	5059	3200	4000	—	12.7	76.7	17.9	—	28.2	21.7	22.1	30.7	—	10.6	75.0	16.1	—	26.4	19.9	20.5	28.6
²⁾ 6800 P245/75R16	2580	2478	5059	3200	4000	—	12.6	76.6	17.8	—	28.1	21.7	22.1	30.7	—	10.6	75.0	16.1	—	26.3	19.9	20.4	28.5
²⁾ 6800 P265/70R17	2580	2478	5059	3200	4000	—	13.1	77.1	18.3	—	28.6	22.1	22.6	31.1	—	11.0	75.4	16.5	—	26.8	20.3	20.9	28.9
²⁾ 6800 & Z55 P265/70R17	2590	2498	5089	3200	4000	—	13.2	77.0	18.2	—	28.4	22.1	22.5	30.9	—	11.3	75.7	16.2	—	26.3	20.1	20.4	28.7

NOTE: Front coil springs, torsion bars and adjusters are computer selected based on model options and calculated sprung curb weight. Actual heights may vary due to production tolerances.

1) Base GVWR — contains minimum equipment required

2) Optional GVWR — contains minimum equipment required

(—) = not applicable for this model

VEHICLE AND FRAME HEIGHT CHARTS

C 15906		130.0" Wheelbase				Frame Heights at Minimum Curb Weight								Frame Heights and Angular Dimensions are shown at Maximum GAWR Front/Rear									
GVW/Tire	Minimum Curb Weight			GAWR		HE	HF	HG	HM	HP	HR	HS	HS2	HT	HE	HF	HG	HM	HP	HR	HS	HS2	HT
	Frnt	Rr	Ttl	Frnt	Rr																		
¹⁾ 7000 P265/70R17	2719	2499	5219	3200	4000	—	13.0	76.8	18.4	—	29.1	22.2	22.8	31.8	—	12.0	74.3	16.4	—	25.9	20.4	20.4	27.8
²⁾ 7000 P265/70R16	2719	2499	5219	3200	4000	—	12.6	76.4	18.0	—	28.6	21.8	22.4	31.3	—	11.6	73.8	16.0	—	25.4	20.0	20.0	27.4
²⁾ 7000 P245/75R16	2719	2499	5219	3200	4000	—	12.5	76.3	19.6	—	27.5	21.7	22.3	31.2	—	11.5	73.8	17.5	—	24.3	19.9	19.9	27.3
²⁾ 7000 P265/70R17	2719	2499	5219	3200	4000	—	13.0	76.8	20.1	—	27.9	22.2	22.8	31.7	—	12.0	74.2	17.9	—	24.7	20.4	20.4	27.7

NOTE: Front coil springs, torsion bars and adjusters are computer selected based on model options and calculated sprung curb weight. Actual heights may vary due to production tolerances.

1) Base GVWR — contains minimum equipment required

2) Optional GVWR — contains minimum equipment required

(—) = not applicable for this model

VEHICLE AND FRAME HEIGHT CHARTS

K 15706		116.0" Wheelbase				Frame Heights at Minimum Curb Weight										Frame Heights and Angular Dimensions are shown at Maximum GAWR Front/Rear												
						Minimum Curb Weight			GAWR		HE	HF	HG	HM	HP	HR	HS	HS2	HT	HE	HF	HG	HM	HP	HR	HS	HS2	HT
						Frnt	Rr	Ttl	Frnt	Rr																		
¹⁾ 6800 P245/75R16	2764	2426	5191	3600	3750	—	12.4	77.1	18.2	—	28.8	21.9	22.5	31.5	—	10.1	75.3	16.2	—	27.8	19.9	20.2	27.8					
²⁾ 6800 P265/70R16	2764	2426	5191	3600	3750	—	12.4	77.2	18.2	—	28.9	22.0	22.6	31.6	—	10.1	75.4	16.2	—	25.9	19.9	20.3	27.9					
²⁾ 6800 P265/70R17	2764	2426	5191	3600	3750	—	12.9	77.7	18.7	—	29.3	22.4	23.1	32.1	—	10.4	75.8	16.5	—	26.3	20.4	20.7	28.4					
²⁾ 6800 LT245/75R16	2764	2426	5191	3600	3750	—	12.6	77.4	18.4	—	29.0	22.1	22.8	31.8	—	10.4	75.6	16.5	—	26.1	20.2	20.5	28.2					
²⁾ 6800 P255/70R16	2764	2426	5191	3600	3750	—	12.1	76.9	17.9	—	28.5	21.6	22.3	31.3	—	9.8	75.0	15.9	—	25.5	19.6	19.9	27.6					
²⁾ 6800 & Z71 & BPH P265/70R17	2769	2439	5209	3600	3750	—	13.0	77.2	18.3	—	28.7	22.2	22.6	31.3	—	10.4	75.5	16.5	—	26.8	20.2	20.9	29.0					
²⁾ 6900 P245/75R16	2762	2522	5285	3600	4000	—	12.4	77.0	18.0	—	28.6	21.8	22.4	31.3	—	10.1	75.1	16.0	—	25.2	19.8	19.9	27.0					
²⁾ 6900 P265/70R16	2762	2522	5285	3600	4000	—	12.5	77.0	18.1	—	28.7	21.9	22.5	31.3	—	10.2	75.2	16.1	—	25.3	19.8	20.0	27.1					
²⁾ 6900 P265/70R17	2762	2522	5285	3600	4000	—	13.0	77.5	18.6	—	29.1	22.3	22.9	31.8	—	10.6	75.6	16.6	—	25.7	20.3	20.4	27.5					
²⁾ 7000 P265/70R17	2852	2644	5497	3550	4000	—	13.1	76.6	17.9	—	28.0	21.9	22.1	30.4	—	10.9	75.0	16.2	—	25.6	20.0	20.3	27.5					
²⁾ 7000 P275/55R20	2852	2644	5497	3550	4000	—	13.6	77.1	18.4	—	28.5	22.3	22.6	30.9	—	11.4	75.5	16.7	—	26.2	20.5	20.8	28.0					

NOTE: Front coil springs, torsion bars and adjusters are computer selected based on model options and calculated sprung curb weight. Actual heights may vary due to production tolerances.

1) Base GVWR — contains minimum equipment required

2) Optional GVWR — contains minimum equipment required

(—) = not applicable for this model

VEHICLE AND FRAME HEIGHT CHARTS

K 15906		130.0" Wheelbase				Frame Heights at Minimum Curb Weight								Frame Heights and Angular Dimensions are shown at Maximum GAWR Front/Rear									
GVW/Tire	Minimum Curb Weight			GAWR		HE	HF	HG	HM	HP	HR	HS	HS2	HT	HE	HF	HG	HM	HP	HR	HS	HS2	HT
	Frnt	Rr	Ttl	Frnt	Rr																		
¹⁾ 7200 P245/75R16	2898	2552	5451	3600	4000	—	12.5	76.2	17.8	—	28.5	21.7	22.2	31.1	—	10.7	74.0	15.8	—	25.4	19.7	19.9	27.3
²⁾ 7200 P265/70R16	2898	2552	5451	3600	4000	—	12.5	76.3	17.9	—	28.5	21.7	22.3	31.2	—	10.8	74.0	15.9	—	25.5	19.7	20.0	27.4
²⁾ 7200 P265/70R17	2898	2552	5451	3600	4000	—	13.0	76.8	18.4	—	29.0	22.2	22.8	31.7	—	11.2	74.5	16.3	—	25.9	20.2	20.4	27.9
²⁾ 7200 P265/70R17	2898	2552	5451	3600	4000	—	12.9	76.7	18.3	—	28.9	22.1	22.7	31.6	—	11.1	74.4	16.3	—	25.8	20.1	20.4	27.8
²⁾ 7200 P255/70R16	2898	2552	5451	3600	4000	—	12.2	75.8	17.6	—	28.2	21.4	22.0	30.9	—	10.4	73.7	15.5	—	25.1	19.4	19.7	27.1
²⁾ 7200 P265/70R17	3072	2638	5711	3450	4000	—	13.0	76.0	17.9	—	28.2	21.8	22.2	30.7	—	12.3	74.9	16.4	—	26.1	20.4	20.5	28.2

C 25906		130.0" Wheelbase				Frame Heights at Minimum Curb Weight								Frame Heights and Angular Dimensions are shown at Maximum GAWR Front/Rear									
GVW/Tire	Minimum Curb Weight			GAWR		HE	HF	HG	HM	HP	HR	HS	HS2	HT	HE	HF	HG	HM	HP	HR	HS	HS2	HT
	Frnt	Rr	Ttl	Frnt	Rr																		
¹⁾ 8600 LT245/75R16	2940	2826	5767	3800	5500	—	13.3	77.5	18.9	—	29.7	22.7	23.4	32.5	—	12.1	75.5	17.3	—	27.3	21.1	21.7	27.3
²⁾ 8600 LT245/75R16	2940	3127	6068	3800	5600	—	13.3	77.7	19.0	—	29.9	22.8	23.5	32.8	—	12.1	75.6	17.3	—	27.2	21.2	21.6	29.2

NOTE: Front coil springs, torsion bars and adjusters are computer selected based on model options and calculated sprung curb weight. Actual heights may vary due to production tolerances.

1) Base GVWR — contains minimum equipment required

2) Optional GVWR — contains minimum equipment required

(—) = not applicable for this model

VEHICLE AND FRAME HEIGHT CHARTS

K 25906		130.0" Wheelbase				Frame Heights at Minimum Curb Weight								Frame Heights and Angular Dimensions are shown at Maximum GAWR Front/Rear									
GVW/Tire	Minimum Curb Weight			GAWR		HE	HF	HG	HM	HP	HR	HS	HS2	HT	HE	HF	HG	HM	HP	HR	HS	HS2	HT
	Frnt	Rr	Ttl	Frnt	Rr																		
¹⁾ 8600 LT245/75R16	3208	2883	6092	4180	5500	—	13.3	77.4	20.6	—	28.5	22.6	23.3	32.4	—	11.7	75.9	19.0	—	26.2	21.1	21.8	29.3
²⁾ 8600 & NYS LT245/75R16	3208	3183	6392	4180	5600	—	13.2	77.7	20.7	—	28.8	22.7	23.5	32.7	—	11.7	76.1	19.1	—	26.1	21.2	21.8	29.1

NOTE: Front coil springs, torsion bars and adjusters are computer selected based on model options and calculated sprung curb weight. Actual heights may vary due to production tolerances.

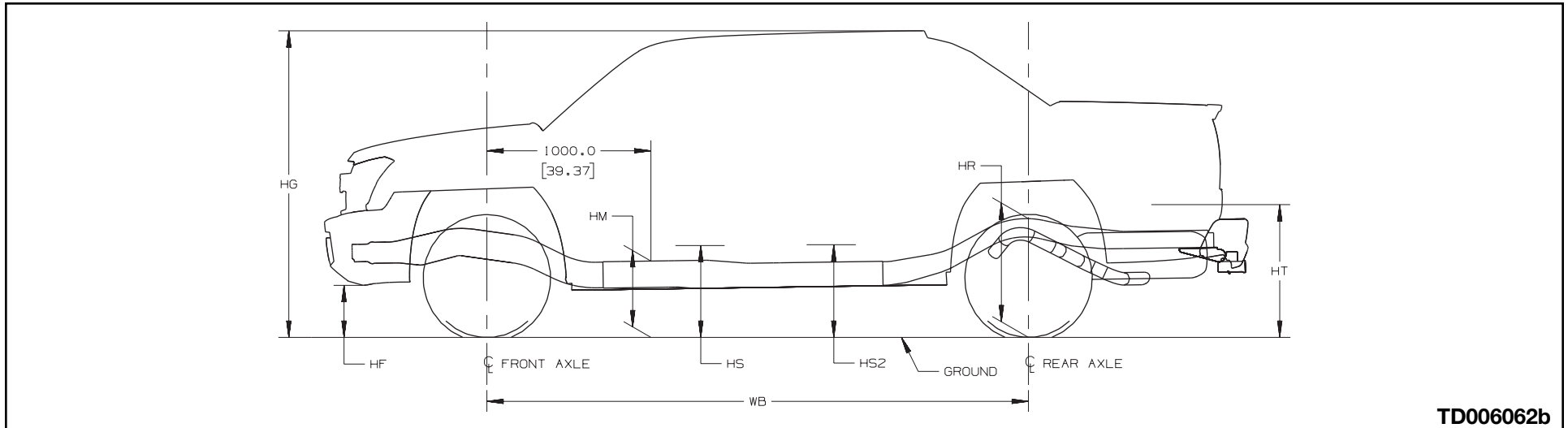
1) Base GVWR — contains minimum equipment required

2) Optional GVWR — contains minimum equipment required

(—) = not applicable for this model

VEHICLE AND FRAME HEIGHT CHARTS

C/K 15000/25000 Fullsize Avalanche



TD006062b

Heights (To Ground)

- HETop of Frame at End
- HFBottom of Front Air Deflector or Bumper
- HGRoof height to ground
- HMNormal Top of Frame
- HPTop of Tailgate
- HRTop of Frame at Centerline of Rear Axle
- HSStep H-Point-Front
- HS2Step H-Point-Second
- HTRear Cargo Load Height

NOTE: All weights are in pounds, dimensions are in inches and angles are in degrees.

VEHICLE AND FRAME HEIGHT CHARTS

C 15936		130.0" Wheelbase				Frame Heights at Minimum Curb Weight								Frame Heights and Angular Dimensions are shown at Maximum GAWR Front/Rear									
GVW/Tire	Minimum Curb Weight			GAWR		HE	HF	HG	HM	HP	HR	HS	HS2	HT	HE	HF	HG	HM	HP	HR	HS	HS2	HT
	Frnt	Rr	Ttl	Frnt	Rr																		
¹⁾ 6800 P265/70R16	2782	2640	5423	3400	4000	—	12.0	76.2	17.9	—	28.4	21.7	22.2	32.5	—	10.3	74.5	16.1	—	25.3	20.0	20.1	28.3
²⁾ 6800 P265/70R17	2791	2657	5449	3400	4000	—	12.6	76.2	18.0	—	28.3	22.0	22.3	32.1	—	10.7	75.2	16.8	—	26.9	20.6	21.2	30.3

K 15936		130.0" Wheelbase				Frame Heights at Minimum Curb Weight								Frame Heights and Angular Dimensions are shown at Maximum GAWR Front/Rear									
GVW/Tire	Minimum Curb Weight			GAWR		HE	HF	HG	HM	HP	HR	HS	HS2	HT	HE	HF	HG	HM	HP	HR	HS	HS2	HT
	Frnt	Rr	Ttl	Frnt	Rr																		
¹⁾ 7000 P265/70R16	2973	2686	5660	3800	4000	—	12.0	76.1	17.8	—	28.3	21.6	22.1	32.4	—	9.6	74.7	16.1	—	25.3	19.8	20.1	28.4
²⁾ 7000 & Z55 P265/70R17	3028	2787	5816	3800	4000	—	12.9	75.7	17.7	—	27.6	21.7	21.8	31.2	—	10.5	75.1	16.3	—	26.9	20.1	20.8	30.3

K 25936		130.0" Wheelbase				Frame Heights at Minimum Curb Weight								Frame Heights and Angular Dimensions are shown at Maximum GAWR Front/Rear									
GVW/Tire	Minimum Curb Weight			GAWR		HE	HF	HG	HM	HP	HR	HS	HS2	HT	HE	HF	HG	HM	HP	HR	HS	HS2	HT
	Frnt	Rr	Ttl	Frnt	Rr																		
¹⁾ 8600 LT245/75R16	3556	3141	6698	4380	5500	—	12.7	76.8	20.1	—	27.9	22.4	22.9	33.0	—	11.5	75.4	18.7	—	25.3	21.0	21.4	29.3

NOTE: Front coil springs, torsion bars and adjusters are computer selected based on model options and calculated sprung curb weight. Actual heights may vary due to production tolerances.

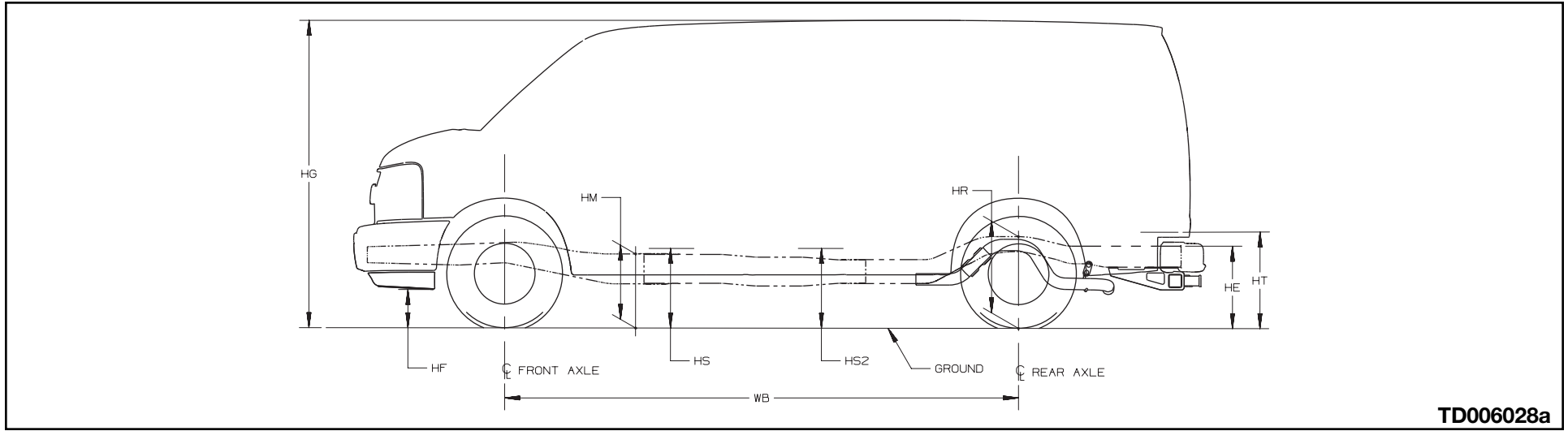
1) Base GVWR — contains minimum equipment required

2) Optional GVWR — contains minimum equipment required

(—) = not applicable for this model

VEHICLE AND FRAME HEIGHT CHARTS

G/H Van - Full Body



TD006028a

Heights (To Ground)

- HETop of Frame at End
- HFBottom of Front Air Deflector or Bumper
- HGRoof Height
- HMNormal Top of Frame
- HRTop of Frame at Centerline of Rear Axle
- HSStep H-Point-Front
- HS2Step H-Point-Second
- HTRear Cargo Load Height

NOTE: All weights are in pounds, dimensions are in inches and angles are in degrees.

VEHICLE AND FRAME HEIGHT CHARTS

G 13405		135.0" Wheelbase				Frame Heights at Minimum Curb Weight								Frame Heights and Angular Dimensions are shown at Maximum GAWR Front/Rear									
GVW/Tire	Minimum Curb Weight			GAWR		HE	HF	HG	HM	HP	HR	HS	HS2	HT	HE	HF	HG	HM	HP	HR	HS	HS2	HT
	Frnt	Rr	Ttl	Frnt	Rr																		
¹⁾ 6200 & YF7 P235/75R16	2671	2131	4802	3300	3200	—	15.3	80.8	17.4	—	24.1	17.6	18.1	25.4	—	14.1	79.4	16.1	—	22.3	16.3	16.7	23.2
¹⁾ 6200 & YF7 P245/75R16	2671	2131	4802	3300	3200	—	15.7	81.1	17.8	—	24.5	18.0	18.5	25.8	—	14.4	79.8	16.5	—	22.6	16.7	17.1	23.6
²⁾ 7200 P235/75R16	2656	2030	4686	3600	4000	—	15.0	81.8	17.7	—	25.3	17.9	18.9	27.0	—	13.3	79.1	15.5	—	21.9	15.8	16.3	22.9
²⁾ 7200 LT225/75R16	2656	2030	4686	3600	4000	—	15.1	81.8	17.7	—	25.3	18.0	18.9	27.0	—	13.4	79.2	15.7	—	22.1	15.9	16.5	23.2

G 13406		135.0" Wheelbase				Frame Heights at Minimum Curb Weight								Frame Heights and Angular Dimensions are shown at Maximum GAWR Front/Rear									
GVW/Tire	Minimum Curb Weight			GAWR		HE	HF	HG	HM	HP	HR	HS	HS2	HT	HE	HF	HG	HM	HP	HR	HS	HS2	HT
	Frnt	Rr	Ttl	Frnt	Rr																		
¹⁾ 7200 P235/75R16	2772	2465	5237	3600	4000	—	15.1	81.0	17.5	—	24.5	17.7	18.3	25.9	—	13.6	79.1	15.7	—	21.9	15.9	16.4	22.9
¹⁾ 7200 P245/75R16	2772	2465	5237	3600	4000	—	15.5	81.4	17.8	—	24.8	18.1	18.7	26.3	—	14.0	79.5	16.1	—	22.2	16.3	16.7	23.2
¹⁾ 7200 LT225/75R16	2772	2465	5237	3600	4000	—	15.2	81.1	17.5	—	24.5	17.7	18.4	26.0	—	13.7	79.3	15.9	—	22.1	16.1	16.6	23.1

NOTE: Front coil springs, torsion bars and adjusters are computer selected based on model options and calculated sprung curb weight. Actual heights may vary due to production tolerances.

1) Base GVWR — contains minimum equipment required

2) Optional GVWR — contains minimum equipment required

(—) = not applicable for this model

VEHICLE AND FRAME HEIGHT CHARTS

H 13405		135.0" Wheelbase				Frame Heights at Minimum Curb Weight									Frame Heights and Angular Dimensions are shown at Maximum GAWR Front/Rear								
GVW/Tire	Minimum Curb Weight			GAWR		HE	HF	HG	HM	HP	HR	HS	HS2	HT	HE	HF	HG	HM	HP	HR	HS	HS2	HT
	Fr	Rr	Ttl	Fr	Rr																		
¹⁾ 7200 P235/75R16	2904	2026	4930	3600	4000	—	14.8	81.9	17.6	—	25.4	17.8	18.8	27.1	—	13.8	79.2	15.9	—	21.9	16.1	16.5	22.8
¹⁾ 7200 LT225/75R16	2904	2026	4930	3600	4000	—	14.9	81.8	17.7	—	25.3	17.9	18.9	27.1	—	14.0	79.4	16.0	—	22.1	16.2	16.6	23.1
¹⁾ 7200 P245/75R16	2904	2026	4930	3600	4000	—	15.2	82.2	18.0	—	25.7	18.2	19.2	27.4	—	14.2	79.6	16.2	—	22.3	16.4	16.8	23.2

H 13406		135.0" Wheelbase				Frame Heights at Minimum Curb Weight									Frame Heights and Angular Dimensions are shown at Maximum GAWR Front/Rear								
GVW/Tire	Minimum Curb Weight			GAWR		HE	HF	HG	HM	HP	HR	HS	HS2	HT	HE	HF	HG	HM	HP	HR	HS	HS2	HT
	Fr	Rr	Ttl	Fr	Rr																		
¹⁾ 7200 P235/75R16	3004	2442	5446	3600	4000	—	14.9	81.0	17.4	—	24.5	17.6	18.3	26.0	—	14.0	79.2	16.0	—	21.9	16.2	16.5	22.8
¹⁾ 7200 LT225/75R16	3004	2442	5446	3600	4000	—	15.0	81.1	17.4	—	24.6	17.7	18.4	26.1	—	14.1	79.4	16.1	—	22.1	16.3	16.7	23.0
¹⁾ 7200 P245/75R16	3004	2442	5446	3600	4000	—	15.3	81.4	17.7	—	24.9	18.0	18.7	26.4	—	14.4	79.6	16.3	—	22.2	16.5	16.9	23.1

NOTE: Front coil springs, torsion bars and adjusters are computer selected based on model options and calculated sprung curb weight. Actual heights may vary due to production tolerances.

1) Base GVWR — contains minimum equipment required

2) Optional GVWR — contains minimum equipment required

(—) = not applicable for this model

VEHICLE AND FRAME HEIGHT CHARTS

G 23405		135.0" Wheelbase				Frame Heights at Minimum Curb Weight								Frame Heights and Angular Dimensions are shown at Maximum GAWR Front/Rear									
GVW/Tire	Minimum Curb Weight			GAWR		HE	HF	HG	HM	HP	HR	HS	HS2	HT	HE	HF	HG	HM	HP	HR	HS	HS2	HT
	Frnt	Rr	Ttl	Frnt	Rr																		
¹⁾ 7300 LT245/75R16	2638	2188	4826	3600	4380	—	15.5	83.2	18.6	—	26.6	18.8	19.9	28.5	—	13.9	80.3	16.5	—	23.0	16.7	17.4	23.9
²⁾ 8500 LT245/75R16	2806	2790	5596	4100	5360	—	16.8	83.1	19.3	—	26.6	19.5	20.3	28.2	—	14.4	81.6	17.3	—	24.4	17.5	18.5	25.4
²⁾ 8600 LT225/75R16	2909	2260	5169	4100	5360	—	16.5	83.4	19.3	—	26.9	19.5	20.4	28.6	—	14.5	80.9	17.1	—	23.8	17.3	18.1	24.7

G 23406		135.0" Wheelbase				Frame Heights at Minimum Curb Weight								Frame Heights and Angular Dimensions are shown at Maximum GAWR Front/Rear									
GVW/Tire	Minimum Curb Weight			GAWR		HE	HF	HG	HM	HP	HR	HS	HS2	HT	HE	HF	HG	HM	HP	HR	HS	HS2	HT
	Frnt	Rr	Ttl	Frnt	Rr																		
¹⁾ 8500 KL6 LT245/75R16	3006	3118	6124	4100	5360	—	17.2	82.8	19.4	—	26.2	19.6	20.1	27.5	—	15.1	81.6	17.7	—	24.4	17.9	18.8	25.3
²⁾ 8600 LT225/75R16	3116	2597	5713	4100	5360	—	16.5	82.8	19.0	—	26.3	19.2	20.0	27.9	—	14.8	81.0	17.3	—	23.8	17.5	18.2	24.7
²⁾ 8600 & LLY LT225/75R16	3640	2631	6271	4100	5360	—	16.4	82.7	18.9	—	26.3	19.1	19.9	27.8	—	16.0	81.2	18.0	—	23.8	18.2	18.6	24.5
²⁾ 8600 & LLY LT245/75R16	3640	2631	6271	4100	5360	—	16.8	83.3	19.4	—	26.8	19.7	20.5	28.4	—	16.5	81.8	18.5	—	24.4	18.7	19.1	25.1

NOTE: Front coil springs, torsion bars and adjusters are computer selected based on model options and calculated sprung curb weight. Actual heights may vary due to production tolerances.

1) Base GVWR — contains minimum equipment required

2) Optional GVWR — contains minimum equipment required

(—) = not applicable for this model

VEHICLE AND FRAME HEIGHT CHARTS

G 23705		155.0" Wheelbase				Frame Heights at Minimum Curb Weight										Frame Heights and Angular Dimensions are shown at Maximum GAWR Front/Rear							
GVW/Tire	Minimum Curb Weight			GAWR		HE	HF	HG	HM	HP	HR	HS	HS2	HT	HE	HF	HG	HM	HP	HR	HS	HS2	HT
	Frnt	Rr	Ttl	Frnt	Rr																		
¹⁾ 7300 LT245/75R16	3154	2280	5434	3600	4380	—	15.4	82.9	18.2	—	26.4	18.5	19.5	28.2	—	14.9	80.5	17.0	—	22.9	17.3	17.7	23.7
²⁾ 8500 LT245/75R16	2973	2776	5749	4300	5360	—	17.2	83.2	19.5	—	26.6	19.7	20.3	28.0	—	14.8	81.7	17.4	—	24.3	17.7	18.6	25.3
²⁾ 8600 LT225/75R16	3074	2230	5304	4300	5360	—	16.5	83.4	19.2	—	26.9	19.4	20.3	28.6	—	14.5	81.0	17.0	—	23.8	17.3	18.1	24.7
²⁾ 8600 LT245/75R16	3074	2230	5304	4300	5360	—	17.0	83.9	19.7	—	27.5	19.9	20.8	29.2	—	15.0	81.6	17.6	—	24.3	17.8	18.6	25.3

H 23405		135.0" Wheelbase				Frame Heights at Minimum Curb Weight										Frame Heights and Angular Dimensions are shown at Maximum GAWR Front/Rear							
GVW/Tire	Minimum Curb Weight			GAWR		HE	HF	HG	HM	HP	HR	HS	HS2	HT	HE	HF	HG	HM	HP	HR	HS	HS2	HT
	Frnt	Rr	Ttl	Frnt	Rr																		
¹⁾ 7300 LT245/75R16	2938	2196	5134	3600	4380	—	15.4	83.2	18.5	—	26.6	18.7	19.9	28.5	—	14.6	80.4	16.9	—	23.0	17.1	17.6	23.8

NOTE: Front coil springs, torsion bars and adjusters are computer selected based on model options and calculated sprung curb weight. Actual heights may vary due to production tolerances.

1) Base GVWR — contains minimum equipment required

2) Optional GVWR — contains minimum equipment required

(—) = not applicable for this model

VEHICLE AND FRAME HEIGHT CHARTS

G 33405		135.0" Wheelbase				Frame Heights at Minimum Curb Weight								Frame Heights and Angular Dimensions are shown at Maximum GAWR Front/Rear									
GVW/Tire	Minimum Curb Weight			GAWR		HE	HF	HG	HM	HP	HR	HS	HS2	HT	HE	HF	HG	HM	HP	HR	HS	HS2	HT
	Frnt	Rr	Ttl	Frnt	Rr																		
¹⁾ 9600 LT245/75R16	2935	2270	5205	4300	6084	—	17.0	84.1	19.7	—	27.6	20.1	21.1	29.4	—	14.9	81.3	17.4	—	24.3	17.7	18.5	25.3

G 33406		135.0" Wheelbase				Frame Heights at Minimum Curb Weight								Frame Heights and Angular Dimensions are shown at Maximum GAWR Front/Rear									
GVW/Tire	Minimum Curb Weight			GAWR		HE	HF	HG	HM	HP	HR	HS	HS2	HT	HE	HF	HG	HM	HP	HR	HS	HS2	HT
	Frnt	Rr	Ttl	Frnt	Rr																		
¹⁾ 9600 LT245/75R16	3065	2528	5593	4300	6084	—	17.0	83.9	19.7	—	27.5	19.9	20.8	29.1	—	15.0	81.4	17.5	—	24.2	17.7	18.5	25.3

G 33705		155.0" Wheelbase				Frame Heights at Minimum Curb Weight								Frame Heights and Angular Dimensions are shown at Maximum GAWR Front/Rear									
GVW/Tire	Minimum Curb Weight			GAWR		HE	HF	HG	HM	HP	HR	HS	HS2	HT	HE	HF	HG	HM	HP	HR	HS	HS2	HT
	Frnt	Rr	Ttl	Frnt	Rr																		
¹⁾ 9600 LT245/75R16	3042	2376	5418	4300	6084	—	17.0	83.6	19.6	—	27.2	19.9	20.8	28.8	—	15.1	81.3	17.4	—	24.3	17.7	18.4	25.3

NOTE: Front coil springs, torsion bars and adjusters are computer selected based on model options and calculated sprung curb weight. Actual heights may vary due to production tolerances.

1) Base GVWR — contains minimum equipment required

2) Optional GVWR — contains minimum equipment required

(—) = not applicable for this model

VEHICLE AND FRAME HEIGHT CHARTS

GVW/Tire		Minimum Curb Weight				GAWR		Frame Heights at Minimum Curb Weight								Frame Heights and Angular Dimensions are shown at Maximum GAWR Front/Rear								
		Frnt	Rr	Ttl	Frnt	Rr	HE	HF	HG	HM	HP	HR	HS	HS2	HT	HE	HF	HG	HM	HP	HR	HS	HS2	HT
¹⁾ 9600 LT245/75R16		3258	2605	5863	4300	6084	—	17.0	83.6	19.7	—	27.2	19.8	20.6	28.8	—	15.4	81.4	17.8	—	24.3	17.9	18.6	25.3

NOTE: Front coil springs, torsion bars and adjusters are computer selected based on model options and calculated sprung curb weight. Actual heights may vary due to production tolerances.

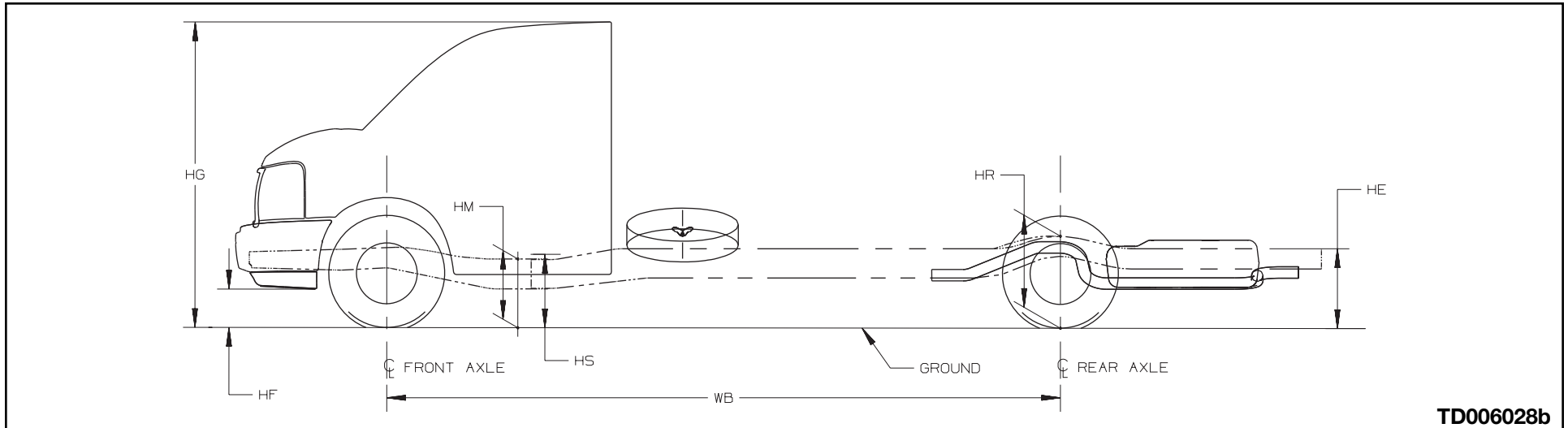
1) Base GVWR — contains minimum equipment required

2) Optional GVWR — contains minimum equipment required

(—) = not applicable for this model

VEHICLE AND FRAME HEIGHT CHARTS

G/H Van - Fullsize Cutaway



TD006028b

Heights (To Ground)

- HETop of Frame at End
- HFBottom of Front Air Deflector or Bumper
- HGRoof Height
- HMNormal Top of Frame
- HRTop of Frame at Centerline of Rear Axle
- HSStep H-Point-Front
- HS2Step H-Point-Second
- HTRear Cargo Load Height

NOTE: All weights are in pounds, dimensions are in inches and angles are in degrees.

VEHICLE AND FRAME HEIGHT CHARTS

G 33503		139.0" Wheelbase				Frame Heights at Minimum Curb Weight								Frame Heights and Angular Dimensions are shown at Maximum GAWR Front/Rear									
GVW/Tire	Minimum Curb Weight			GAWR		HE	HF	HG	HM	HP	HR	HS	HS2	HT	HE	HF	HG	HM	HP	HR	HS	HS2	HT
	Frnt	Rr	Ttl	Frnt	Rr																		
¹⁾ 8600 LT225/75R16	2915	1550	4465	4100	5360	25.0	16.5	82.1	22.9	—	27.2	19.5	—	—	21.4	14.5	80.7	20.9	—	24.6	17.5	—	—
²⁾ 9600 LT245/75R16	2915	1550	4465	4100	6084	28.9	16.5	83.6	24.8	—	30.0	20.7	—	—	25.1	14.6	81.7	22.5	—	27.0	18.5	—	—
²⁾ 10,000 LT225/75R16	2956	1827	4783	4100	7500	28.1	16.0	83.0	24.2	—	29.3	20.1	—	—	21.9	14.1	81.8	21.7	—	25.3	17.9	—	—
²⁾ 12,000 LT225/75R16	2956	1831	4787	4300	8600	28.2	16.0	83.0	24.2	—	29.3	20.2	—	—	22.5	14.1	80.9	21.2	—	25.2	17.5	—	—
²⁾ 12,300 LT225/75R16	3005	1919	4924	4300	8600	28.4	16.0	83.0	24.3	—	29.4	20.2	—	—	22.7	14.2	80.6	21.1	—	25.3	17.5	—	—

G 33803		159.0" Wheelbase				Frame Heights at Minimum Curb Weight								Frame Heights and Angular Dimensions are shown at Maximum GAWR Front/Rear									
GVW/Tire	Minimum Curb Weight			GAWR		HE	HF	HG	HM	HP	HR	HS	HS2	HT	HE	HF	HG	HM	HP	HR	HS	HS2	HT
	Frnt	Rr	Ttl	Frnt	Rr																		
¹⁾ 9600 LT245/75R16	3012	1625	4637	4100	6084	28.6	16.6	83.3	24.5	—	30.0	20.6	—	—	24.9	14.8	81.7	22.2	—	27.1	18.5	—	—
²⁾ 10,000 LT225/75R16	3012	1625	4637	4100	7500	27.9	16.1	82.8	23.9	—	29.3	20.0	—	—	21.7	14.4	81.9	21.4	—	25.3	17.8	—	—
²⁾ 12,000 LT225/75R16	3012	1625	4637	4300	8600	28.0	16.3	82.9	24.0	—	29.4	20.2	—	—	22.2	14.5	81.0	21.1	—	25.2	17.6	—	—
²⁾ 12,300 & YF1 LT225/75R16	3064	1714	4778	4300	8600	28.1	16.2	82.9	24.0	—	29.5	20.1	—	—	22.4	14.5	80.7	21.0	—	25.2	17.6	—	—
²⁾ 14,050 LT225/75R16	3062	1723	4785	4600	9450	28.0	16.9	83.3	24.3	—	29.6	20.5	—	—	22.3	15.2	80.3	20.9	—	25.0	17.8	—	—

NOTE: Front coil springs, torsion bars and adjusters are computer selected based on model options and calculated sprung curb weight. Actual heights may vary due to production tolerances.

1) Base GVWR — contains minimum equipment required

2) Optional GVWR — contains minimum equipment required

(—) = not applicable for this model

VEHICLE AND FRAME HEIGHT CHARTS

G 33903		177.0" Wheelbase				Frame Heights at Minimum Curb Weight								Frame Heights and Angular Dimensions are shown at Maximum GAWR Front/Rear									
GVW/Tire	Minimum Curb Weight			GAWR		HE	HF	HG	HM	HP	HR	HS	HS2	HT	HE	HF	HG	HM	HP	HR	HS	HS2	HT
	Frnt	Rr	Ttl	Frnt	Rr																		
¹ 12,000 LT225/75R16	2998	1695	4693	4300	8600	27.9	16.6	83.0	24.0	—	29.6	20.2	—	—	23.3	14.8	81.4	21.4	—	26.0	17.9	—	—
² 12,300 & YF1 LT225/75R16	3051	1774	4825	4300	8600	28.2	16.5	83.0	24.0	—	29.7	20.2	—	—	23.5	14.8	81.1	21.4	—	26.1	17.9	—	—

NOTE: Front coil springs, torsion bars and adjusters are computer selected based on model options and calculated sprung curb weight. Actual heights may vary due to production tolerances.

1) Base GVWR — contains minimum equipment required

2) Optional GVWR — contains minimum equipment required

(—) = not applicable for this model