



## UI BULLETIN # 95c

**SUBJECT:** Vehicle Certification, Tire Placard, Anti- Theft, and Service Parts ID Label Information (vehicle build/option content) and Location(s).

**MODELS AFFECTED:**

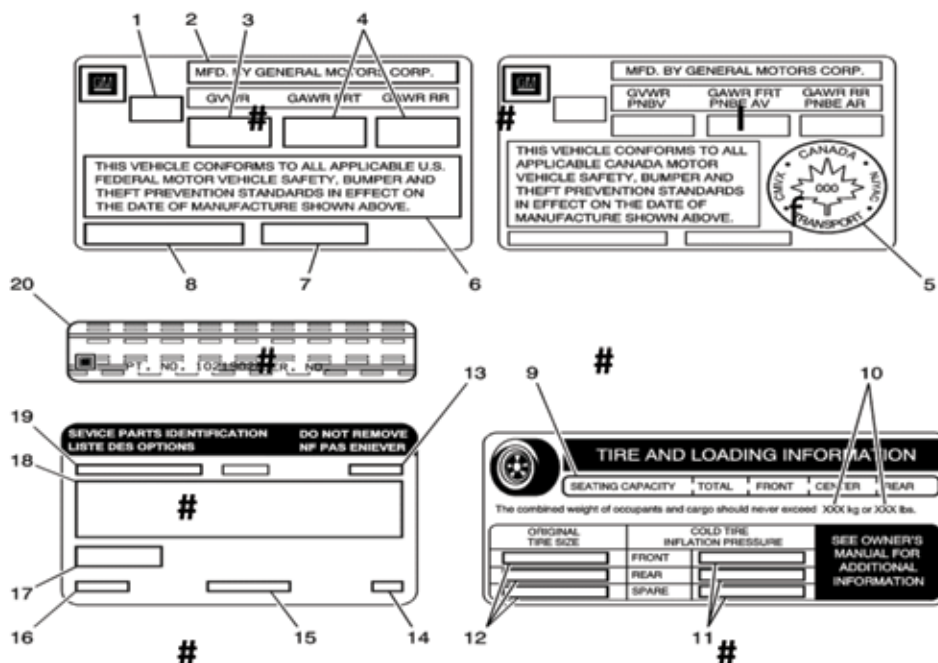
C/K (Chevrolet Silverado/GMC Sierra),  
S/T (Chevrolet Colorado/GMC Canyon)  
G/H (Chevrolet Express/GMC Savanna)

**MODEL YEAR(S):** 2007 and Beyond

**DATE:** April 17, 2018

## INTRODUCTION:

The following information may be helpful when attempting to locate vehicle service/certification labels





## Label Descriptions

### Vehicle Certification Label:

The vehicle certification label is located on the driver door and displays the following assessments:

- Gross Vehicle Weight Rating (GVWR)
- Gross Axle Weight Rating (GAWR), front and rear
- The gross vehicle weight (GVW) is the weight of the vehicle and everything it carries. The gross vehicle weight must not exceed the GVWR. Include the following items when figuring the GVW:
  - The base vehicle weight (factory weight)
  - The weight of all vehicle accessories
  - The weight of the driver and the passengers
  - The weight of the cargo

(see diagram on page 1)

Callouts	Description
1	Name of Manufacturer
2	Gross Vehicle Weight Rating
3	Gross Axle Weight Rating (Front, Rear)
4	Canadian Safety Mark (w/RPO Z49)
5	Certification Statement
6	Vehicle Class Type (Pass Car, etc.)
7	Vehicle Identification Number
8	Date of Manufacture (Mo/Yr)

### Tire Placard:

The tire placard label is located on the driver side B pillar and displays the following assessments:

(see diagram on page 1)

Callouts	Description
9	Specified Occupant Seating Positions
10	Maximum Vehicle Capacity Weight
11	Original Equipment Tire Size
12	Tire Pressure, Front, Rear, and Spare (Cold)

### Service Parts ID (SPID) Label

The vehicle Service Parts Identification (often referred to as the SPID) label is located in the instrument panel (I/P) compartment for the C/K (Silverado/Sierra) and S/T (Colorado/Canyon) Light duty trucks, and on the rear edge of the front passenger door for the G/H (Express/Savanna) full size vans. The label is use to help identify the vehicle original parts and options.

(see diagram on page 1)

Callouts	Description
13	Vehicle Identification Number
14	Engineering Model Number (Vehicle Division, Line and Body Style)
15	Interior Trim Level and Decor
16	Exterior (Paint Color) WA Number
17	Paint Technology
18	Special Order Paint Colors and Numbers
19	Vehicle Option Content (RPO)

Note: beginning in 2018MY many vehicles transitioned to having the service parts identification information located within a bar code on the vehicle certification label. If unable to locate a SPID label, check the driver door for a bar code.



**Label Descriptions**

**Anti-Theft Label:**

The Federal law requires that General Motors label certain body parts on this vehicle with the VIN. The purpose of the law is to reduce the number of motor vehicle thefts by helping in the tracing and recovery of parts from stolen vehicles  
(see diagram on page 1)

<b>Callouts</b>	<b>Description</b>
20	Labels are permanently affixed to an interior surface of the part. The label on the replacement part contains the letter R, the manufacturer’s logo, and the DOT symbol. The anti-theft label must be covered before any painting, and rust proofing procedures, and uncovered after the procedures. Failure to follow the precautionary steps may result in liability for violation of the Federal Vehicle Theft Prevention Standard and possible suspicion to the owner that the part was stolen.