



Subject: Guidelines for Diesel Fuel Filler Neck Assembly & Installation

Models Years Affected: 2016 MY and beyond

Models Affected: Chevrolet Low Cab Forward Trucks Equipped with a diesel engine

Origination Date: October 7, 2016

Revision Date: N/A

ADVISORY:

Note: This bulletin has been created using information for the GM Service Information Bulletin #11-08-49-001

Concern:

Improper installation of the fuel filler neck assembly may result in unwanted materials entering the fuel tank, contaminating the fuel system. Fuel contamination may lead to failures such as plugged fuel filters, poor engine performance, check engine light illumination, fuel system (lines and tank) corrosion (rust), and more.

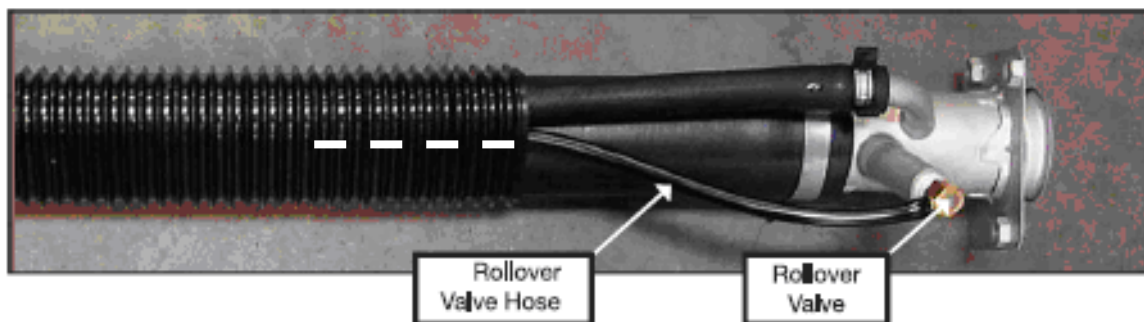
Recommendation:

The following guidelines are being issued to insure proper installation of the fuel filler assembly, thereby greatly reducing the potential for contaminants entering the fuel system through the filler neck.

The Upfitter should familiarize themselves with the diesel fuel filler assembly as shown below for proper fuel filler neck installation.

FUEL FILLER NECK ASSEMBLY

IMPORTANT: The Rollover Valve Hose must be installed to the rollover valve and routed into the corrugated hose protector in order for the valve to work properly.

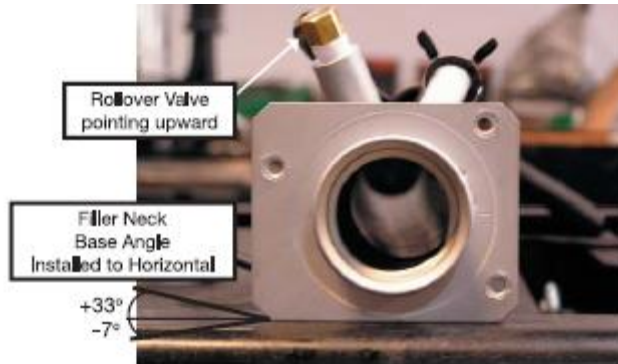


General Motors Upfitter Integration

<http://www.gmupfitter.com>



ROLLOVER VALVE POSITION

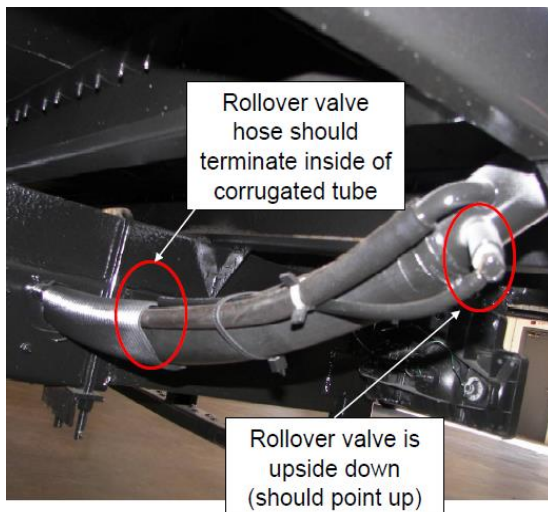


The fuel filler neck must be installed with proper orientation on the body. The neck should be installed with the roll-over valve pointing upward as shown. The bottom edge of the neck mounting flange must be parallel to the ground. See above photo for reference.

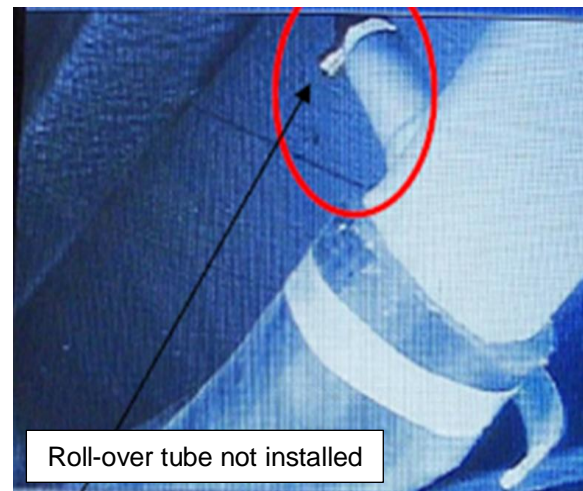
INCORRECT INSTALLATION

Fuel filler neck installations shown below will result in fuel contamination.

ROLLOVER VALVE installed upside down.



ROLLOVER VALVE TUBE is not installed.



Warranty Information

Any incorrect fuel filler neck installation or any failure resulting from fuel contamination is NOT warrantable.

Additional Information:

More information can be found in the GM Medium Duty, Low Cab Forward (LCF) Body Builder Manual under Diesel Fuel Fill on the gmupfitter.com website.