



# UPFITTER INTEGRATION

## UI BULLETIN # 92

**SUBJECT: Generator Not Charging Properly (Re-program ECM For Correct Generator)**

**MODELS AFFECTED:**  
Chevrolet Express Van  
GMC Savana Van

**MODEL YEAR(S):**  
2010

**DATE:** 09/24/2010

## INTRODUCTION:

The following diagnosis might be helpful if the vehicle exhibits the symptom(s) described in this PI.

### CONDITION/CONCERN:

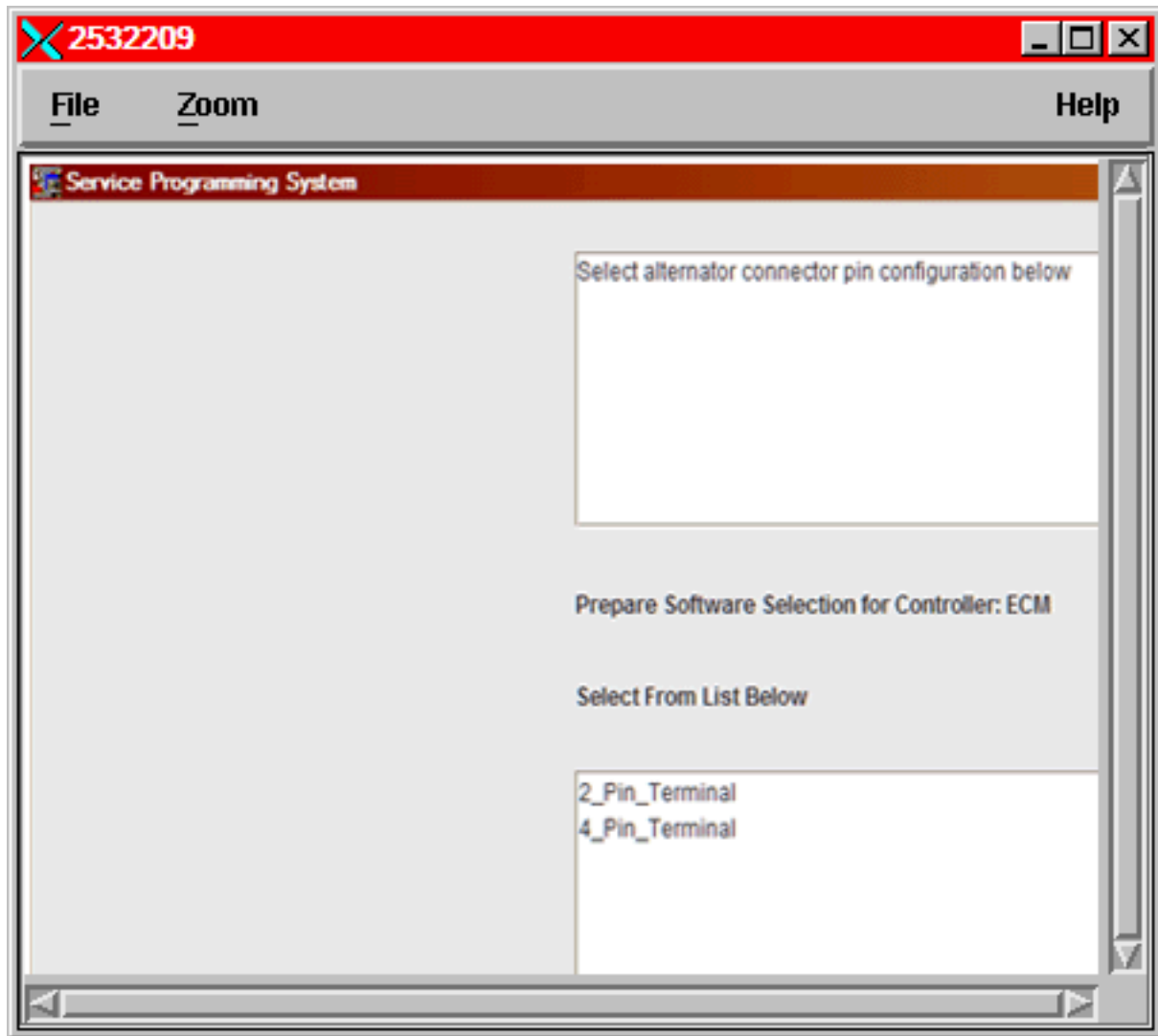
Some concerns of the generator not charging or not operating correctly have been received. This concern could be caused by the ECM being programmed improperly. When programming the ECM there is a selection for the generator pin configuration, as shown below. If the wrong selection is made the generator will not operate properly.

**NOTE:** If a generator is replaced and the pin configuration is different from the one removed the ECM will also need to be reprogrammed for the new pin configuration.

**General Motors Upfitter Integration**

<http://www.gmupfitter.com> • 1-800-875-4742 (Upfitter Hotline)

## RECOMMENDATION/INSTRUCTIONS



### RECOMMENDATION/INSTRUCTIONS:

Program the ECM for the correct generator pin configuration.

Please follow this diagnostic or repair process thoroughly and complete each step. If the condition exhibited is resolved without completing every step, the remaining steps do not need to be performed.