



**Subject:** Adding or Installing a Rearview Camera – MD Trucks  
**Models Years Affected:** 2019 - Beyond  
**Models Affected:** Chevrolet Silverado 4500/5500/6500 Medium Duty Trucks  
**Origination Date:** February 27, 2019  
**Revision Date:** September 27, 2022

## **ADVISORY:**

**Condition / Concern:**

GM Dealers and Upfitters requiring instructions/guidelines on the installing/adding of a rearview camera on General Motors Incomplete/Upfitted Vehicles.

**NOTE:** The following are guidelines intended to assist with the installation process. Compliance to all FMVSS requirements is the responsibility of the installer/upfitter. Additionally, do **NOT** alter or modify the camera and/or housing as damage to the camera and its internal components may occur.

**Repair/Recommendation:**

**Mounting the Camera**

Fabrication of brackets and/or mounts for mounting the camera is the responsibility of the upfitter. Mounting locations should be determined by that of which meets the Field of View and Image Display Quality Requirements set forth by the National Highway and Transportation Safety Administration (NHTSA). The NHTSA has published test procedures available which may be downloaded to aide in establishing a mounting location that meets the standards.

<https://www.nhtsa.gov/>

**2019 and above Silverado 4500/5500/6500 Medium Duty Trucks**

It is the upfitter’s responsibility to ensure FMVSS111 is complied with

- Regular Production Option (RPO) UVC provides the following to enable the installing of a rear-view camera (see additional information section below for adding the Accessories option camera kit)
- Included (refer to figure 1):
  - Rear camera calibration installed at the assembly plant
  - A rear camera w/pigtail
  - Fixed zero pitch mounting bracket
  - A wire harness extension

These components are all shipped inside the vehicle cab

**General Motors Upfitter Integration**  
<http://www.gmupfitter.com>



## Camera installation guidelines

- Install camera into the provided mounting bracket using the provide2 screws (not shown but included).
- With provided bracket optimal camera location is 38" above ground on vehicle center line with as little as zero set-back from rear extreme of vehicle/body
- With provided bracket and as little as 8" of set-back from rear of vehicle/body camera will meet FMVSS111 requirements located within 2" (50mm) of center line horizontally and from 24" (610mm) to 48" (1220mm) from ground vertically
- Increased set-back from rear of vehicle will increase the vertical range to meet regulatory requirements
- Camera is capable of meeting FMVSS111 requirements from a greater range of locations using an aftermarket bracket to adjust pitch vertically or yaw horizontally. It is the upfitter's responsibility to provide camera mounting to meet regulatory requirements

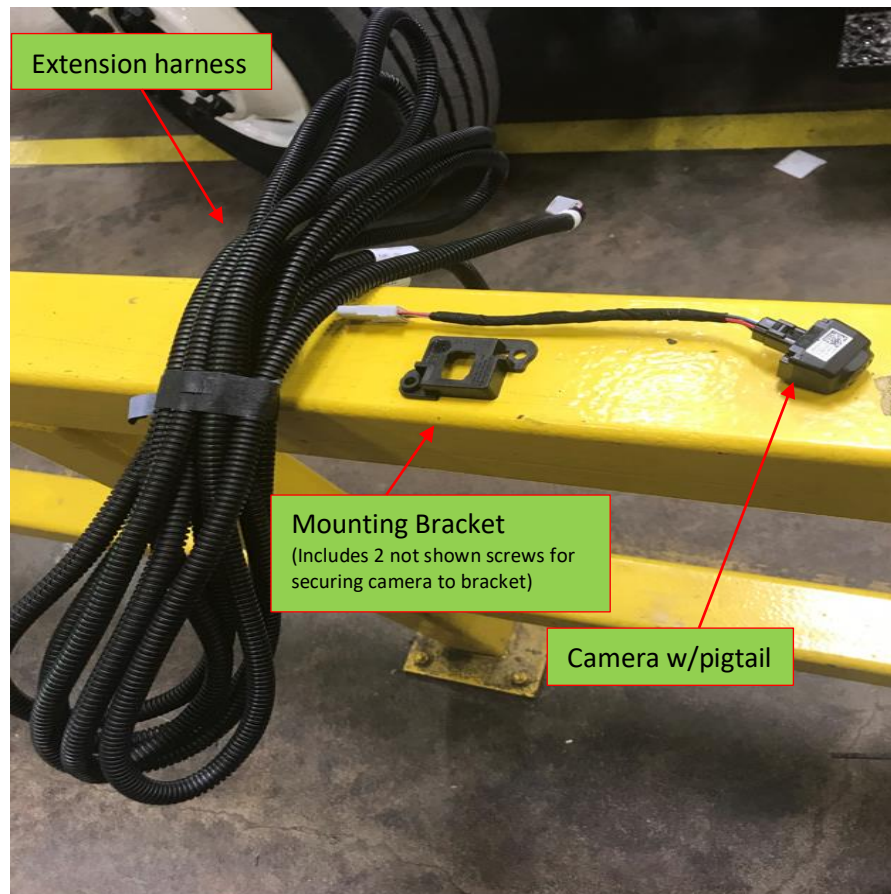
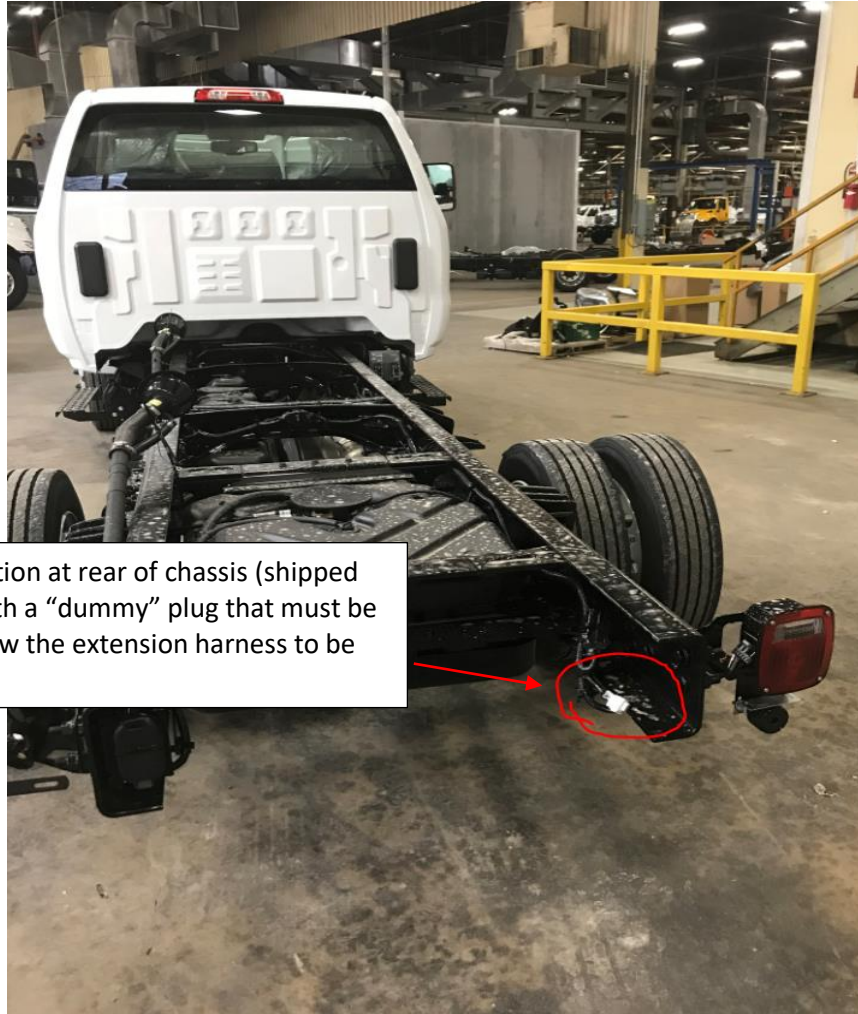


Figure 1

General Motors Upfitter Integration  
<http://www.gmupfitter.com>



Camera connection at rear of chassis (shipped from factory with a “dummy” plug that must be removed to allow the extension harness to be connected)

Figure 2

### Additional Information:

Vehicles not ordered/manufactured with the UVC option and have a build date of January 13, 2020 or later can be retrofitted as all other wiring/hardware provisions are provided without the option being present at the time of the vehicle build. To add the rearview camera capability, obtain GM Accessories camera kit P/N 84653790 from your local GM dealer and install per the instructions above. Once the camera has been installed the vehicle must be reprogrammed to activate the video display. Dealers/Upfitters must contact GM Techline Customer Support to have the vehicle’s configuration index (VCI) modified to one that includes the rear camera option (UVC). Once the VCI is updated, refer to programming instructions *Radio: Programming and Setup* (IO3/IOB) or *Human Machine Interface Control Module: Programming and Setup* (IO5/IO6) in Service Information.

**General Motors Upfitter Integration**  
<http://www.gmupfitter.com>