



**Subject:** Adding Ignition and Battery powered circuits for upfitter use – 2023 BrightDrop Zevo 600.  
**Models Years Affected:** 2023  
**Models Affected:** BrightDrop Zevo 600 Cargo Vans  
**Origination Date:** December 12, 2022  
**Revision Date:** December 12, 2022

## **ADVISORY:**

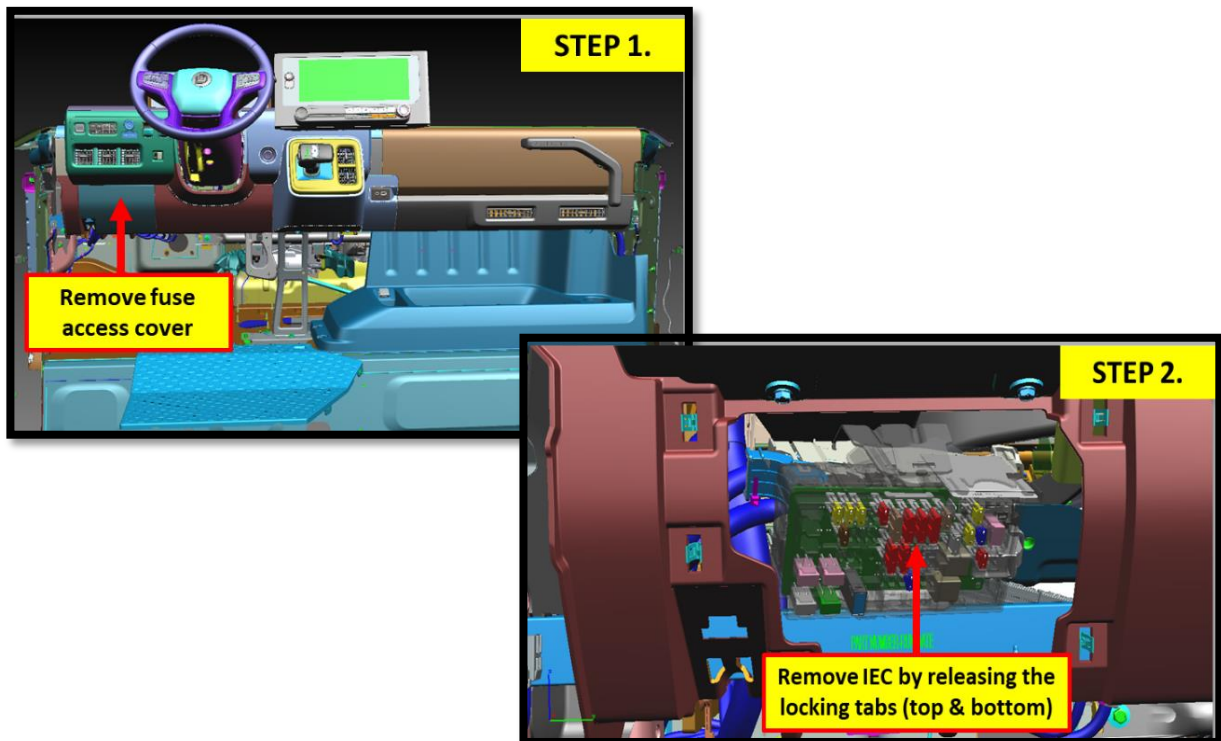
### **Condition/Concern:**

Upfitters wanting to add an Ignition and direct battery power provision circuit with grounding on the 2023MY BrightDrop Zevo 600 cargo vans.

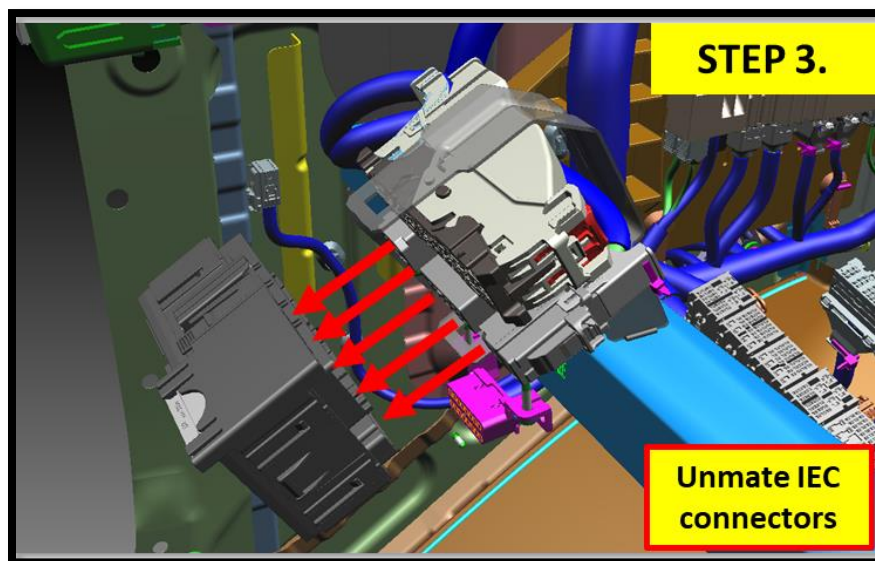
### **Repair/Recommendation:**

2023MY BrightDrop Zevo 600 cargo vans.

**NOTE:** Prior to performing the adding of the power provision circuit a negative 12v disconnect is required...please refer to [UI Bulletin 190](#) for instructions on the negative cable disconnect.



**General Motors Upfitter Integration**  
<http://www.gmupfitter.com>



BATTERY FEED HOT AT ALL TIMES.

For cavity you can also use Yazaki terminal P/N 7116-4781-02

STEP 4.

ITEM NO. 39-16800201_01 # J69	
SPN 35549468	
CONNECTOR-INLINE-REC 1026	
25470889 - 12V WIRE BRESS MAT	
CAV	WIRE
1	
2	
3	
4	
5	
6	
7	
8	2540
9	1940C
10	2376A
11	2376
12	
13	
14	
15	2540
16	2540
17	
18	5030C
19	
20	1440
21	
22	3040
23	
24	1740
25	10846
26	
27	10846
28	
29	3040
30	2440
31	2040
32	
33	
34	2740
35	2340B
36	2240B
37	2240A
38	2440
39	1440
40	
41	2540
42	2540
43	
44	1940
45	
46	5040
47	
48	1840
49	1540B
50	1540B

BLK

Add wire to cavity 25 use wire gauge 0.5mm2 at least. Max wire gauge 1.0mm2.

Use terminal APTIV PN 10846792 for 0.5 wire gauge or 10846793 for 1.0 wire gauge.



**2.8 SERIES CONNECTOR**

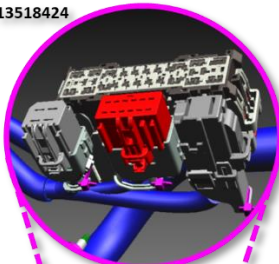

GM & SERVICE PN 13518424

**TERMINALS:**  
7116-4272-02

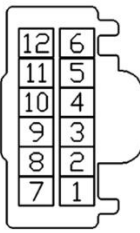
T/L 19368264  
2.5MM2

**RAP/ACCESORY BATTERY FEED.**

**STEP 5.**

Conn GM PN:  
13518424  
X600X203\_X1



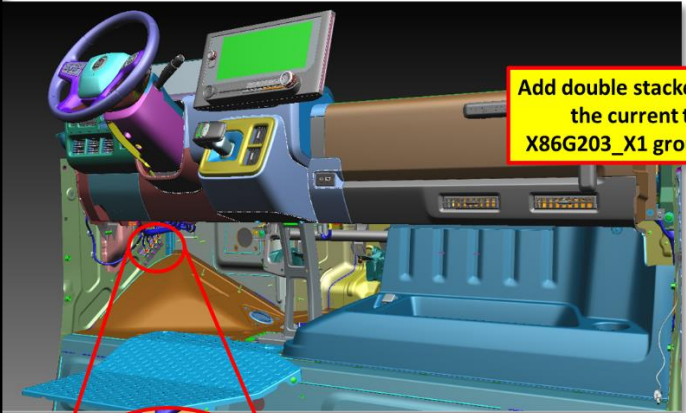
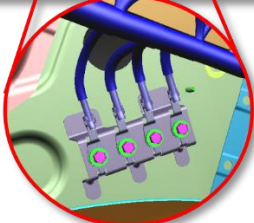
GRA LT

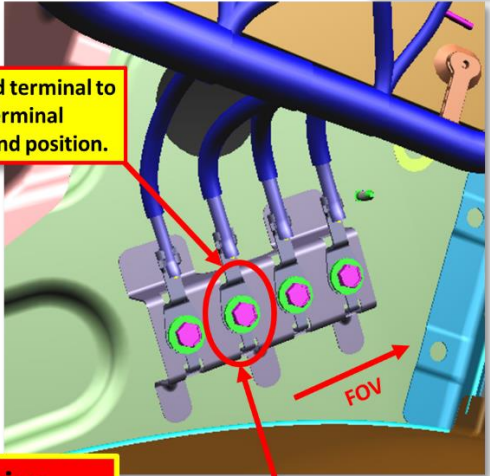
ITEM NO: 41~X600X203_X1 @ H71	
DPN: 35337301	
CONNECTOR-INLINE-BEC X203	
CAV	WIRE
1	
2	
3	
4	
5	1150H
6	4083
7	1001
8	
9	
10	439
11	
12	
SYMBOL	ALL

**Add wire to cavity 3**  
use wire gauge  
1.5mm2 at least.  
Use terminal APTIV  
PN 10725740 or  
10486791 / 13939293

**GROUND CONNECTION.**

**STEP 6.**



**Add double stacked terminal to the current terminal X86G203\_X1 ground position.**

**Use this ring terminal position only**

**Use ring terminal GM PN: 85140741 stacked under current terminal.**

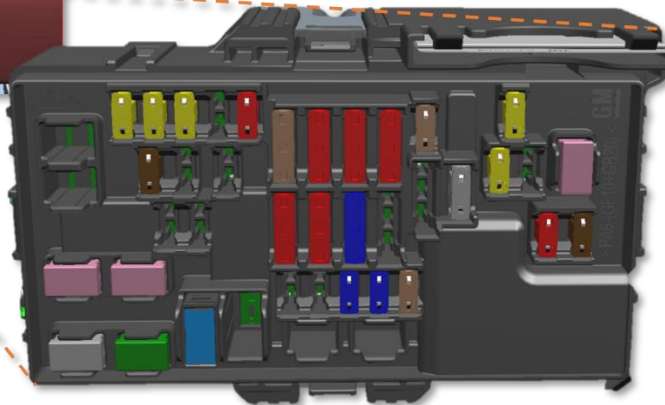




## STEP 7.

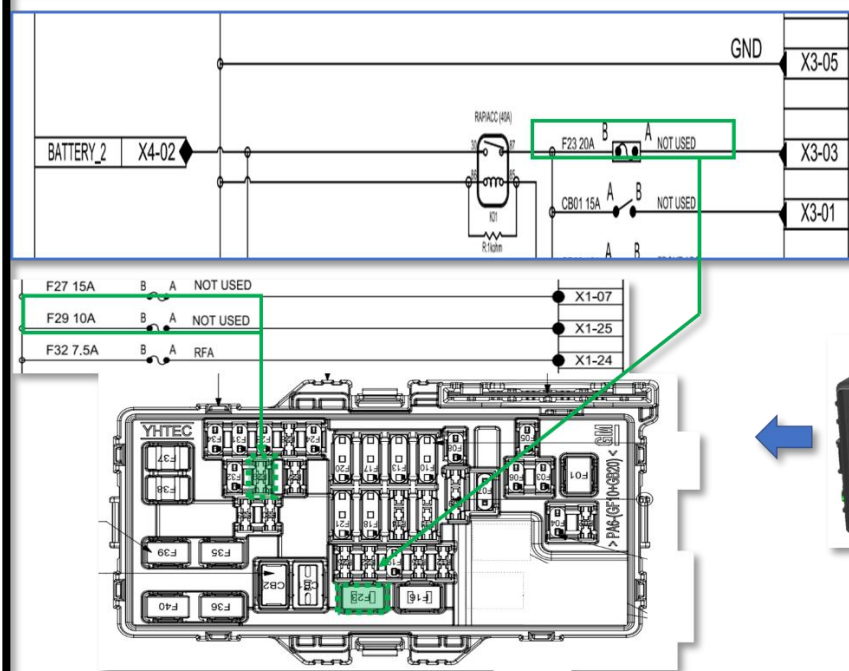


Fuses must be added on the cavities marked in **green**.



## STEP 7.

Fuses must be added on the cavities marked in **green**.





## Additional Information:

## Fuses specs.

F29 ----- Not used → Upfitters 1 → **Micro Fuse** -- 15A (GMPN 84082841 / Littelfuse PN 0327015)

F23 ----- Not Used → Upfitters 2 → **Slow Blown M-Case** -- 20 A (GMPN 84490335 / Littelfuse PN 06995020)

