



Subject: Cautionary – NO Drill/Air Bag Zones
Models Affected: Silverado EV
Models Years Affected: 2024 and beyond
Origination Date: July 18, 2023
Revision Date: N/A

ADVISORY:

NOTE: The information in this bulletin as it pertains to the zoning areas is for general reference only. If precise location or area definitions are needed for the purposes of designing or mounting of upfit equipment or components a Math Data request is required.

Concern:

Upfitters need the locational information for the air bag deployment and the NO DRILL/NO CUT zones for the purposes of installing equipment.

Recommendation:

Air Bag Deploy Zones:

Side Impact Air Bag (SIAB)



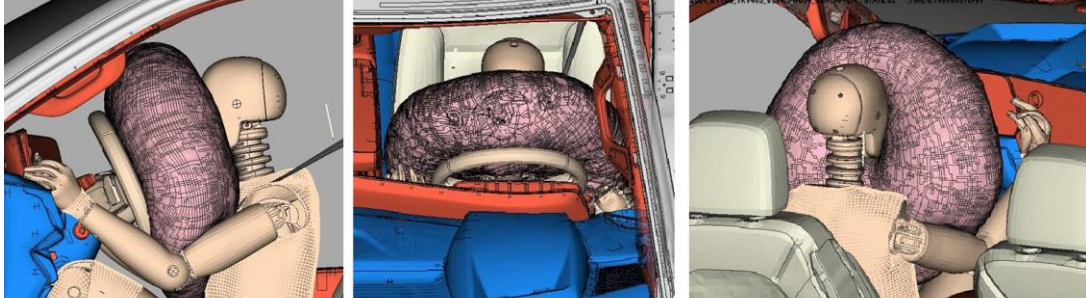
Roof Rail Air Bags (RRAB)



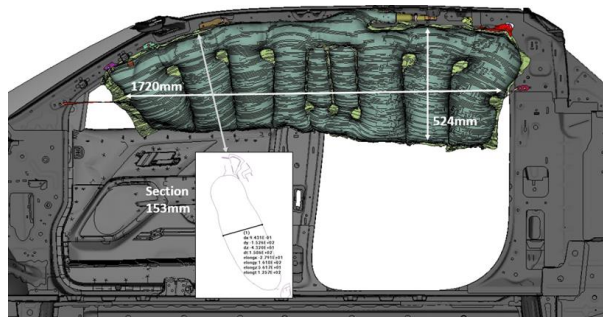
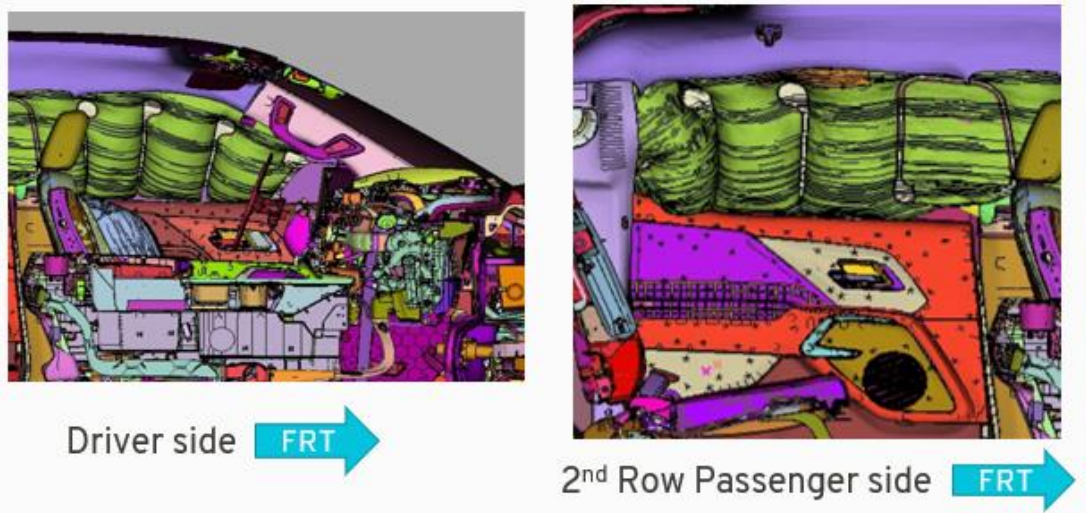
General Motors Upfitter Integration
<http://www.gmupfitter.com>



Driver Air Bag



Side Impact & Roof Rail Air Bags

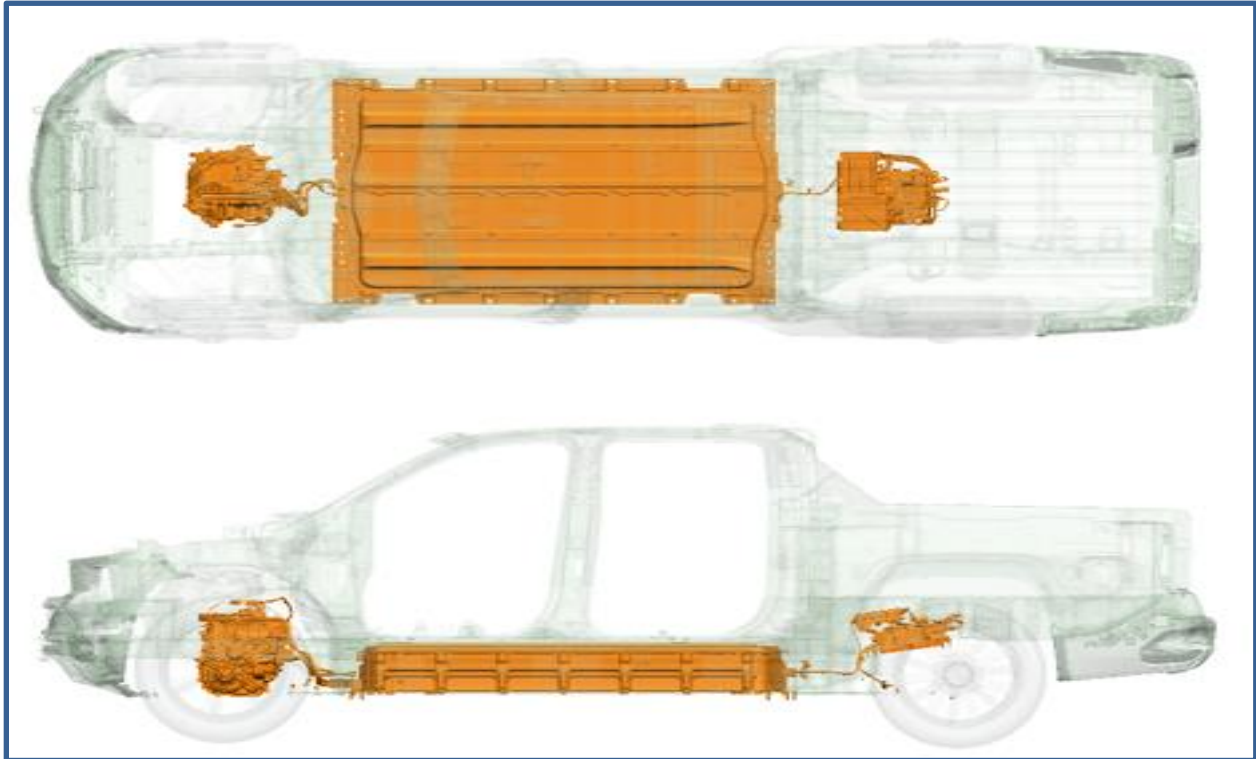


General Motors Upfitter Integration
<http://www.gmupfitter.com>



No Drill/No Cut Zones

MY24 FWD



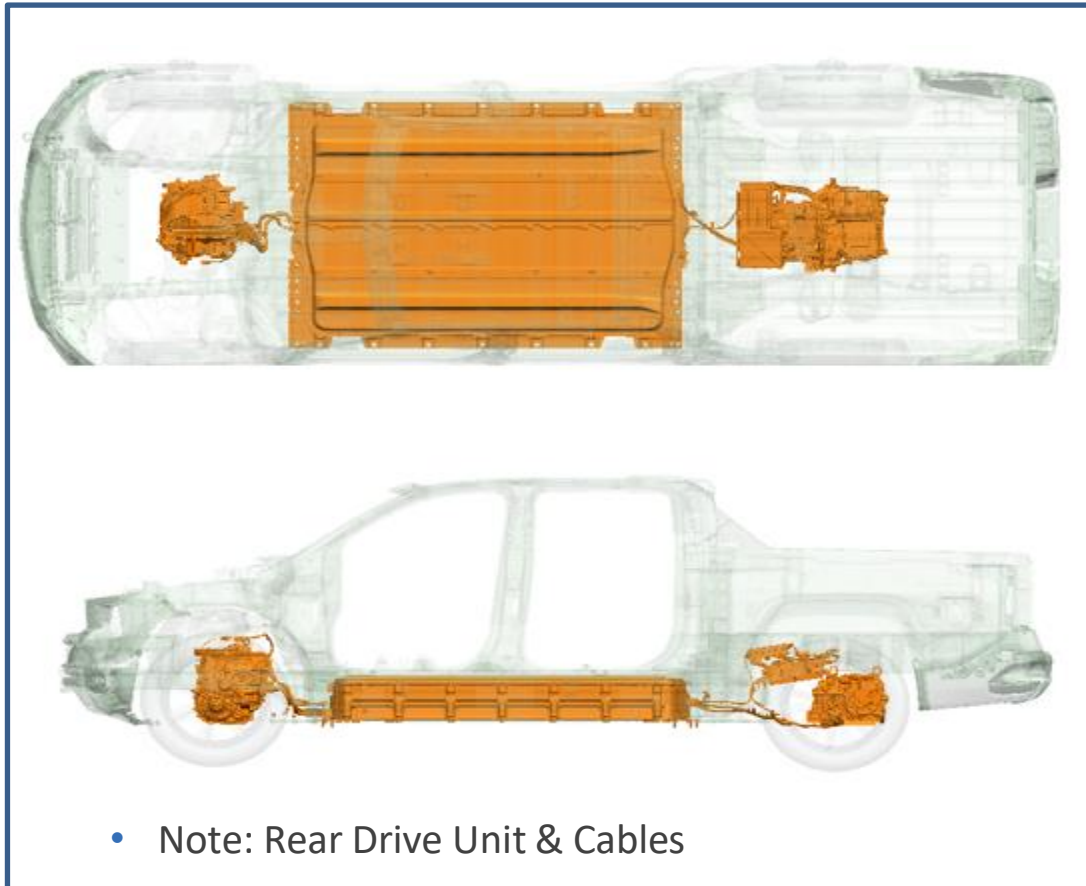
	Airbag		Stored gas inflator		Seat belt pretensioner		SRS control unit		Pedestrian protection active system
	Automatic rollover protection system		Gas strut/Preloaded spring		High strength zone		Zone requiring special attention		
	Battery low voltage		Ultra capacitor, low voltage		Fuel tank		Gas tank		Safety valve
	High voltage battery pack		High voltage power cable component		High voltage disconnect		Fuse box disabling high voltage system		Ultra capacitor, high voltage

DO NOT CUT ANY ORANGE COLORED HIGH VOLTAGE CABLES

Identification Number	Version Number	Page Number
5G5-21101	1	1

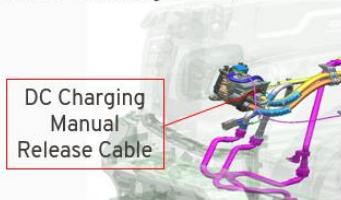


MY24 AWD

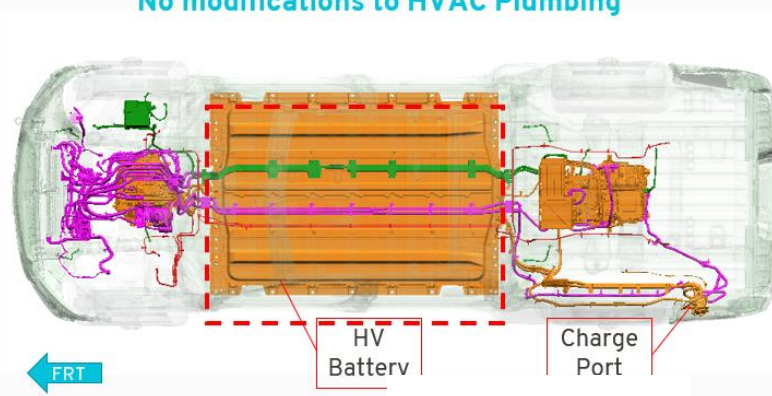


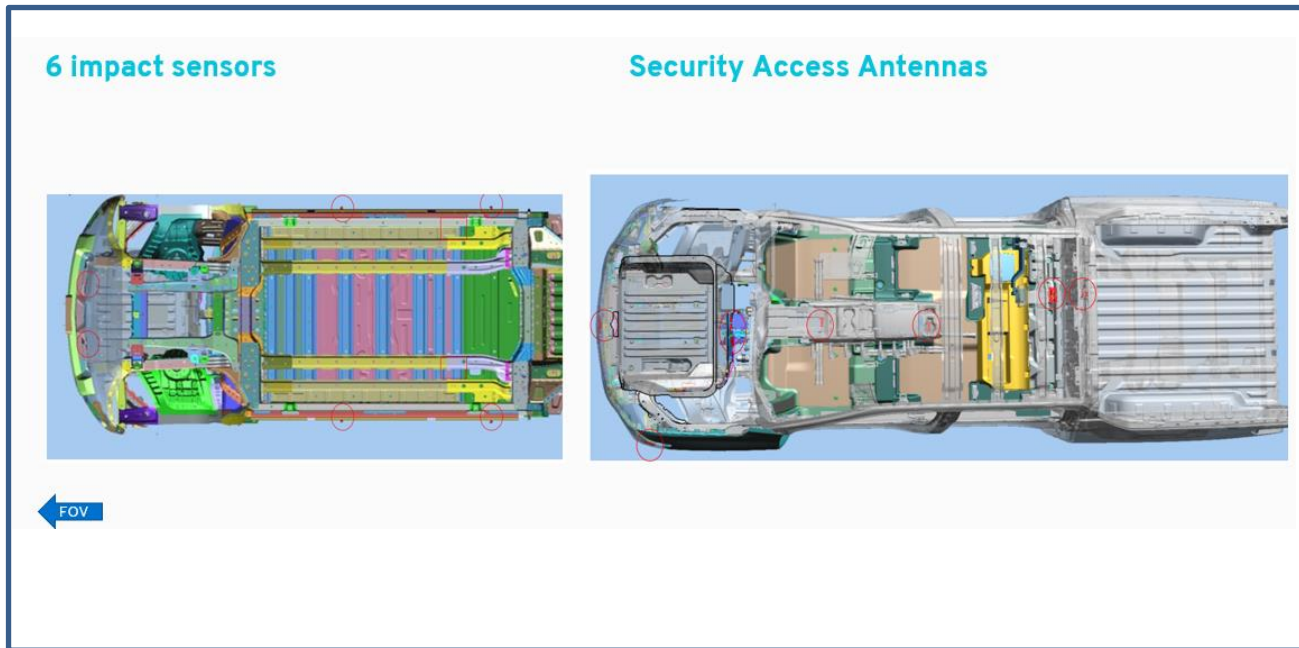
MY24 AWD

- Underbody content:
 - HV Battery (orange)
 - HV Cables/Modules/Drive Units (orange)
 - 12V Wiring (green)
 - Brake Lines (red)
 - HVAC Plumbing (Pink)



- No drilling above HV Battery
- No cutting of orange HV cables
- No modifications to HVAC Plumbing





Additional Information:

As noted at the start of this document this information is reference only...it is not scale nor can be used in the design or developed of any after-market or upfitter equipment. For accurate dimensional and locational information a request for Math Data (CAD) should be submitted to GM Upfitter Integration via the contact us form.

<https://www.gmupfitter.com/contact/>

006X